

## New Equipment Warranty

- 2-year warranty on all vacuum motors
- 2-year warranty on all pumps
- 1-year on all electrical components, parts, tools, and accessories.

Note: This warranty does not cover, and shall not be liable for, Defects or failures resulting from improper, or lack of maintenance, misapplication, misuse, tampering with or substitution of provided parts. Additionally, this warranty does not cover pump stored in freezing conditions, pump run for extended time with no water, use of powdered detergent, failure to clean system regularly with vinegar solution. Filters removed from solution tank. Pumps with inline filters not cleaned regularly.

Manufacturer covers up to one (1) year of service labor at the manufacturer's calculated hourly labor rate/repair time when performed by a manufacture-authorized service provider. Ultimately, labor reimbursement costs are at the discretion of the manufacturer. At no time is the manufacturer responsible for travel time to complete on call repairs. After one (1) year, the original retail purchaser is responsible for all labor costs with no manufacturer reimbursement.

Authorized warranty replacement parts need to come directly from the manufacturer. Any use of any other parts will void warranty. The manufacturer does not reimburse for parts used by client that was not supplied directly for the machine under warranty. The client must contact UnoClean or the manufacture prior to working on or changing out of any parts, etc. Do not send parts or equipment back to the manufacturer without an RMA number and approval. No labor will be paid for, nor parts cost paid for or reimbursed, that have not previously been approved by the manufacturer. All warranty work must be approved and authorized to qualify. Appropriate warranty procedures must be followed.

The warranty starts on the purchase possession date by the original purchaser from UnoClean and subject to proof of purchase. UnoClean works in conjunction with the original manufacturer on all warranty claims.

UnoClean - A March Industries, Inc. Company  
150 Arrowhead Drive, Hampshire, IL 60140  
Toll FREE: 1-888-226-2724 | Local: 224-654-6500  
[www.UnoClean.com](http://www.UnoClean.com)

© 2025 All Rights Reserved UnoClean

## SAFETY, OPERATION AND MAINTENANCE MANUAL WITH PARTS LIST

Please read before use!

3-GALLON CAPACITY

The logo features a diamond-shaped emblem with the letters 'UC' inside, followed by the word 'Detailer' in a large, stylized, italicized font, and the word 'PRO' in a smaller, bold, sans-serif font below it.



UnoClean.com

IMPORTANT INFORMATION AND SAFETY INSTRUCTIONS

Serial No: \_\_\_\_\_



Manufactured with  
Pride in the U.S.A.

3-GALLON EXTRACTOR SERIES

## Dear Valued Client,

Congratulations on the purchase of your 3-Gallon Spot Extractor carpet and upholstery machine! The world of carpet cleaning is becoming more high-tech and competitive and we strive to provide you with the most innovative products. Our spot extractors with or without heat is yet another example of this, bringing a new dimension to carpet and upholstery cleaning with its cutting-edge features, quality and value.

Please review this manual, paying careful attention to the Safety Instructions section. Keep in mind that any unnecessary damage, neglect or abuse of this machine will void your warranty. You can be confident that simple maintenance will ensure that your spot extractor with heat provides quality performance for many years to come.

If warranty questions arise, please consult your manual or contact your UnoClean representative. Should you have any questions regarding maintenance, replacing parts or ordering parts, please call your UnoClean representative.

Before you begin using your Spot Extractor, please thoroughly review the Owner's Manual.

Again, congratulations on the purchase of your 3-Gallon Spot Extractor carpet and upholstery machine!

## Questions or Comments?

UnoClean - A March Industries, Inc. Company  
150 Arrowhead Drive, Hampshire, IL 60140  
Toll FREE: 1-888-226-2724 | Local: 224-654-6500  
[www.UnoClean.com](http://www.UnoClean.com)

## Warranty Registration

**Please take a moment to register your machine. Fill out the information below and mail back to UnoClean immediately.**

The warranty starts on the purchase date by the original purchaser, subject to proof of purchase. Please immediately register your machine by returning this Machine Registration Card at the time of purchase.

Machine Model \_\_\_\_\_ Purchase Date \_\_\_\_\_

Motor Type \_\_\_\_\_ Serial No. \_\_\_\_\_

Place of Purchase \_\_\_\_\_

Shipped To \_\_\_\_\_

Your Name \_\_\_\_\_ Phone \_\_\_\_\_

E-mail \_\_\_\_\_ Fax \_\_\_\_\_

Address Line 1 \_\_\_\_\_

Address Line 2 \_\_\_\_\_

City \_\_\_\_\_ State \_\_\_\_\_ Zip \_\_\_\_\_

Comments:

### Mail to:

UnoClean - March Industries, Inc. Company  
150 Arrowhead Drive  
Hampshire, IL 60140

**Make a copy of this card for future reference.**

# 3-GALLON SPOT EXTRACTOR SERIES

Notes:

Please fill out the following information:

Model No: \_\_\_\_\_

Serial No: \_\_\_\_\_

Distributor Name: \_\_\_\_\_

Distributor Phone No: \_\_\_\_\_

Date of Purchase: \_\_\_\_\_



Built With Pride  
in the USA

UnoClean - A March Industries, Inc. Company  
150 Arrowhead Drive, Hampshire, IL 60140  
Toll FREE: 1-888-226-2724 | Local: 224-654-6500  
[www.UnoClean.com](http://www.UnoClean.com)

## 1.0 Safety Instructions

**WARNING: PLEASE READ AND SAVE! FOLLOW THESE PRECAUTIONS WHEN USING YOUR SPOT EXTRACTOR.**

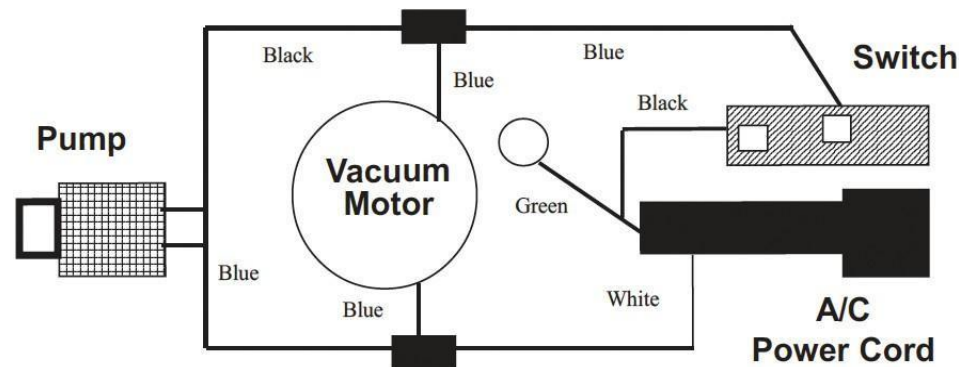
- DO NOT operate this unit if any part of the unit appears to be damaged.
- DO NOT operate if ground plug is broken.
- DO NOT operate if the unit is in standing water.
- DO NOT use volatile substances or operate where volatile substances exist.
- DO NOT service while unit is running or connected to electricity. Unplug the unit!
- DO NOT use water more than 120 degrees Fahrenheit.
- DO NOT use solvents with this unit.
- DO NOT use as a dry vacuum.
- DO NOT use unit unless completely assembled.
- Use only liquid detergents. Powders do not fully dissolve and damage motor.
- Always use defoamer. Foam will suspend moisture particles that damage motor.

## 2.0 Setup / Prepare Unit for Use

**DO NOT EXPOSE TO RAIN. STORE INDOORS.**

- All spot extractors – no matter what the time of year – are shipped with antifreeze in the pump and solution lines. Prior to first use, fill the tank with one quart of warm water. Attach the hose and using the hand tool, flush out the system by spraying the one quart of water through the pump.
- Attach the 1-1/2-inch vacuum hose and the brass quick disconnect.
- Fill the base unit (the recovery tank must be removed) with warm water (less than 100 degrees Fahrenheit). Fill to approximately 4 inches from the top. Use a liquid detergent made for carpet cleaning or upholstery. Read and mix to the dilution ratios as directed.
- DO NOT turn heater on until the heater is full of water.
- NEVER run the vacuum only with the pump on for more than 3 minutes. Water/solution needs to run through pump at all times to keep the pump cool while in use. Failure to do so will void the warranty.
- Be sure to replace any filters back into the machine prior to use.
- Do not use citrus acid, buterol or harsh degreasers inside the machine.

## 11.0 Wiring Diagram - all Models



**CAUTION** – Electrical wire colors may vary. Determine start and end point of each wire to confirm connection point.

## 9.0 Problem Solving

Never operate this spot extractor when the equipment is not performing as expected, or when any part is visibly damaged. When repair is needed, take the equipment to an authorized service center.

### Spotter will not run

- Check power connection. Move the grounded plug to an outlet that is working. Verify that the plug is working by plugging in another electrical component such as lamp, hair dryer or drill.
- Inspect the power cord for damage.

### Loss of vacuum

- Make sure the float is at the bottom of the unit. Open the screw cap and push the float down.
- Check that the hose cuff is securely attached to the front of the extractor.

### Loss of solution pressure

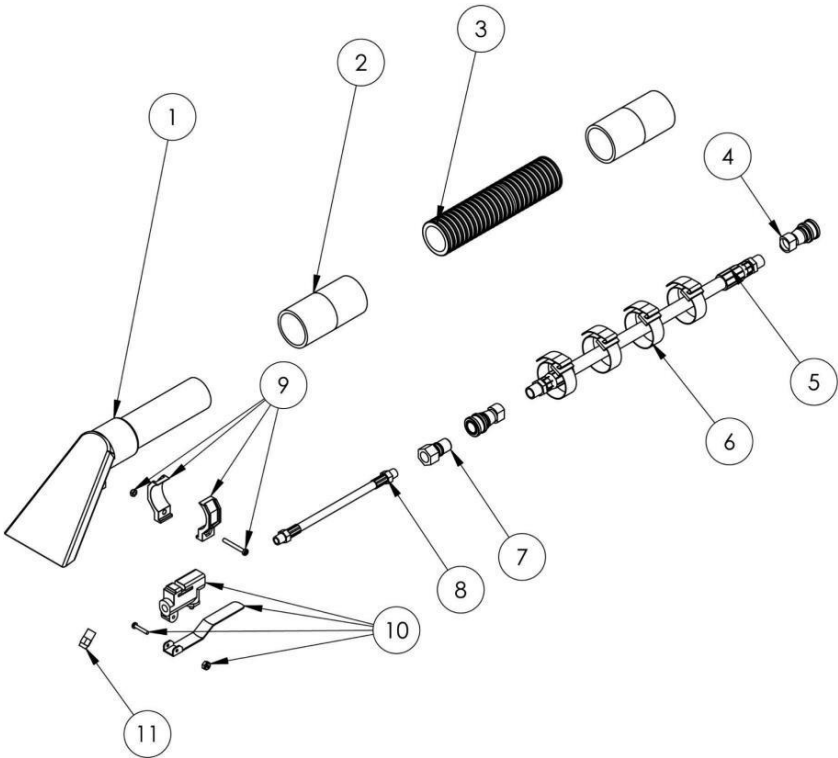
- Verify that the pump is on. Remove jet from end of hand tool and press trigger on wand.
- Clean the solution intake in the solution tank. Check quick-disconnect for debris.
- If pump is still not working, seek authorized repair services.

9.0 Machine Parts List Continued - with Heat

Drawing No.	Item ID	Item Description	Qty. Needed
65	10-0027	Pigtail Strain Relief	1.00
66	10-0448	20-Foot Spotter/Air Mover Cord	1.00
67	10-0025	On/Off Switch	3.00
68	10-1026	Switch Plate for 3-Gallon w/ Heat	1.00
69	10-0400-C	Keeper Latch for Sniper	1.00
70	80-0022-A	Screw for 500 PSI Panel	2.00
71	10-0204	Motor Mount Back-Up Washer	2.00

10.0 Hoses and Hand Tool Drawing and Parts List

10-0501 Stainless Steel Hand Tool for Machines with Heat



Parts List

Drawing No.	Item No.	Item Description	Qty. Needed
1	10-0501	4" Stainless Steel Upholstery Tool	1.00
2	10-0463	Black Slip Hose Cuff for Spotter	2.00
3	50-1008	15-Foot Black Hose 1-1/4"	1.00
4	10-0868	1/4" Female QD for Spotter	1.00
5	80-8007	1/4" x 15-Foot Extractor Hose	1.00
6	10-0388	Velcro Strap	1.00
7	10-0870	1/4" Male QD	1.00
8	10-0507	8" Black Hose for Stainless Steel Hand Tool	1.00
9	10-0506	Valve Clamp for Stainless Steel Hand Tool	1.00
10	10-0504	Valve for Stainless Steel Hand Tool	1.00
11	10-0502	Jet for Stainless Steel Hand Tool	1.00

2.0 Setup / Prepare Unit for Use

Vacuum Shut-Off

The spot extractor is designed with a vacuum restrictor to reduce the vacuum when the recovery tank is full. When the vacuum is restricted, the liquid will not travel up the nozzle of the hand tool. The motor speeds up (the sound of the motor will change) and this is your warning to dispose of recovered solution. The restrictor is a foam float that slides up and down the vacuum tube in the recovery tank.



3.0 Maintenance

Following Each Use

Remove the vacuum hose from the upper body. Un-clip and rotate the latch on the back of the unit and remove the upper section of the spotter. Dispose of the used solution by pouring the solution out of the vacuum inlet (not the hatch cover) into the toilet or janitor's closet sink.

IMPORTANT! Be sure to thoroughly drain water out of heater lines prior to storage in colder climates. This heater will freeze and possibly crack, voiding your warranty.

Prevent Mineral Deposit Buildup

Vinegar may be used to prevent mineral deposit buildup in your machine's lines and pump. Failure to do so may clog your lines and pump. Every two weeks, pour vinegar into the solution tank (dilute with 1/2 water). Run the pump, while squeezing your wand or upholstery tool's trigger until you smell vinegar or notice it coming out of the tool. Let the machine sit overnight, and no longer, with the vinegar in its lines. The next day, flush the machine with 1 gallon of clean water or until you do not smell vinegar any longer.

PLEASE NOTE: If you choose to use CLR, follow the directions on the bottle. DO NOT leave CLR in the machine's lines. Be sure to flush thoroughly. CLR may corrode the machine's components and VOID your warranty. If you choose to use vinegar, you MUST dilute with 1/2 water. Failure to do so may damage the machine's components and VOID your warranty.

## 4.0 Grounding Instructions

**DANGER:** IMPROPER INSTALLATION OF THE GROUNDING PLUG CAN RESULT IN A RISK OF ELECTRIC SHOCK!

This product must be grounded. In the event of an electrical short circuit, grounding reduces the risk of electric shock by providing an escape wire with an appropriate grounding plug. The plug must be plugged into an outlet that is installed properly and grounded in accordance with all local codes and ordinances.

Check with a qualified electrician or serviceman if the grounding instructions are not completely understood, or if in doubt as to whether the product is grounded properly. DO NOT modify the plug provided. If it will not fit into the outlet, have a proper outlet installed by a qualified electrician.

This electric equipment is for use on a normal 120 volt circuit. It has a grounded plug that looks like the plug illustrated in (Fig A). The use of a temporary adaptor is NOT recommended.

**NOTE:** In Canada, the use of a temporary adapter is not permitted by the Canadian Electrical Code.

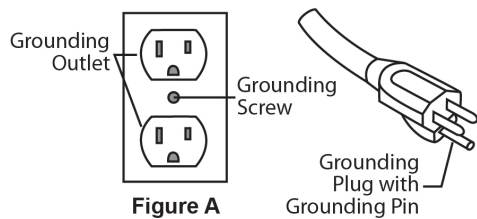


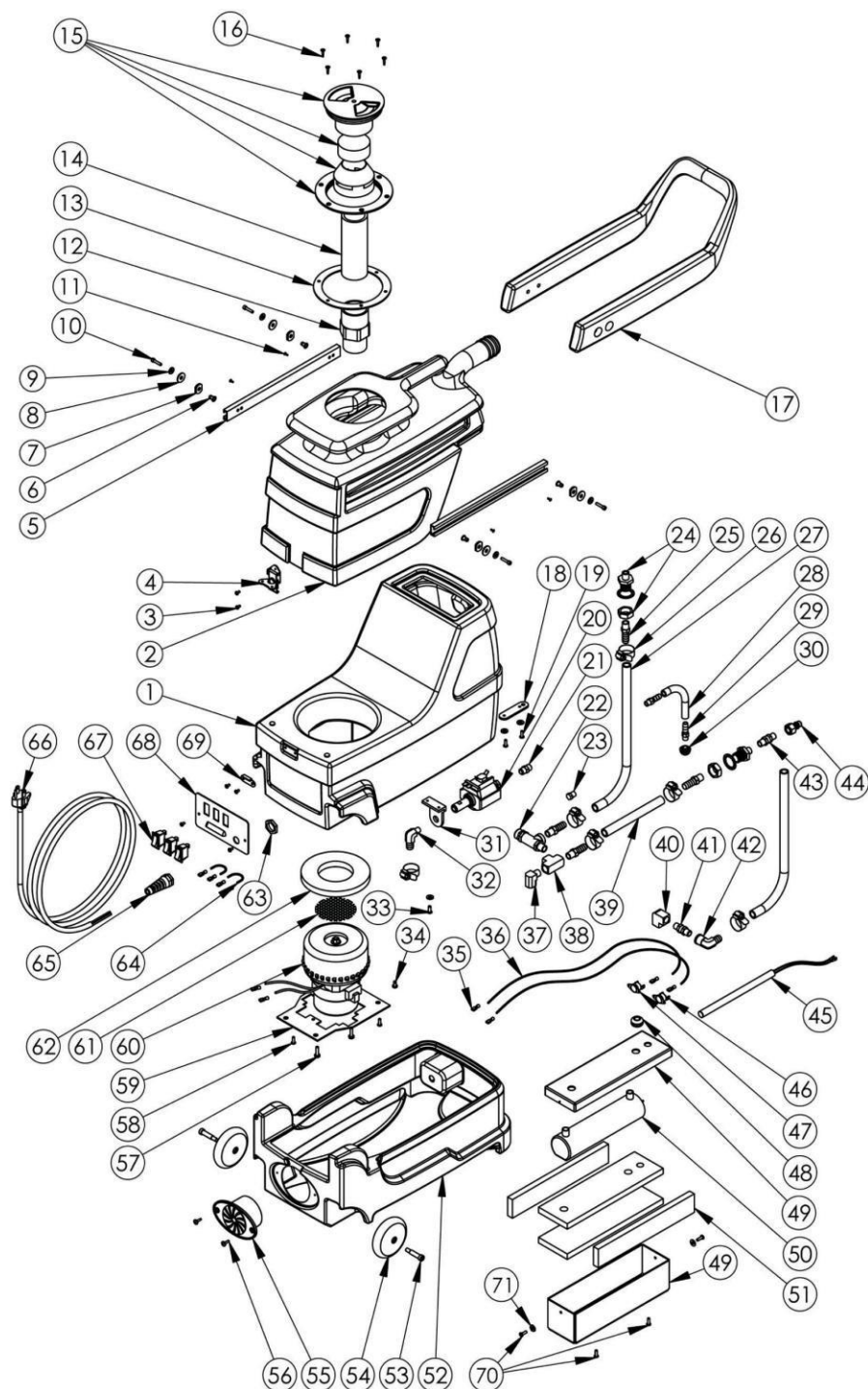
Figure A

## 9.0 Machine Parts List - with Heat

Drawing No.	Item ID	Item Description	Qty. Needed
1	SP-3-ST-BLK	3-Gallon Solution Tank - Black	1.00
2	SP-3-RT-GRN	3-Gallon Recovery Tank - Green	1.00
3	10-0383	6-32 x 1/4" Phil Pan Screw	6.00
4	10-0400-D	Latch for Sniper	1.00
5	10-0412	C-Channel for Spotter Handle	2.00
6	10-0414	Rivet for Spotter Handle	4.00
7	10-0384	.125 Thick Nylon Washer	4.00
8	10-0385	.06 Thick Nylon Washer	4.00
9	10-0074	Flat Washer #8 SAE	11.00
10	10-0216	Allen Head Screw for Backpack	4.00
11	10-0379	8-32 x 3/8" Screw	4.00
12	10-0405	1-1/2" PVC SCH40 Slip Thread	1.00
13	10-0302-A	Hatch Cover Gasket for Spotter	1.00
14	10-0416-A	1-1/2" Black ABS Stand Pipe	1.00
15	10-0304	Spotter Cap and Float Assembly	1.00
16	10-0419	Screw for Spotter Hatch	6.00
17	SP-3-HS-BLK	3-Gallon Heater Skirt - Black	1.00
18	10-0831	S/R Bracket for Sniper	1.00
19	10-0832	S/R Strap Bolts	2.00
20	10-0300	55 PSI Pump for Spotter	1.00
21	10-0403-M	1/8" Brass Male Nipple	1.00
22	10-0901	175 PSI Relief Valve for Heater	1.00
23	10-0510	1/8" Brass Plug	1.00
24	80-0017	Bulk Head fitting for Sniper	2.00
25	80-0024-B	1/4" MPT x 3/8" Barb	4.00
26	10-0826	3/4" Hose Clamp for Sniper	6.00
27	10-0843	3/8" Black Hose for Sniper	1.00
28	10-0434	Threaded Hose for Spotter	1.00
29	10-0407	1/8" Strait Nylon Barb NPT	2.00
30	10-0845-2	1/8" Strainer for Spotter	1.00
31	10-0301	L Bracket for Spotter	1.00
32	10-0828	90 Degree Brass Fitting for Sniper	1.00
33	10-0022	Shoulder and Waist Belt Screw	3.00
34	10-0017	Deflector Screw	1.00
35	T-C-011	Female Terminal Connector	10.00
36	T-WPUR	Purple Wire	
37	80-0011-2	90 Degree Street Elbow	1.00
38	80-0010	1/4" Brass Tee	1.00
39	10-0843	3/8" Black Hose for Sniper	1.00
40	10-0852	1/4" 90 Degree Brass Elbow	1.00
41	80-0101-M	1/4" Male Check Valve	1.00
42	80-0014	3/8" B x 1/4" F 90 Degree	1.00
43	10-0479	1/4" Male Close Nipple	1.00
44	10-0870	1/4" Male QD	1.00
45	10-1500-B	Heater Element 600 Watt	1.00
46	10-0814	Senor for Sniper Heater	1.00
47	10-0814-B	Manual Sensor for Heater	1.00
48	10-0907	Strain Relief for Tube Heater	1.00
49	10-0906	Box for Tubular Heater	1.00
50	10-0900	Heater Body Tubular	1.00
51	10-0801-G	Pipe Wrap Insulation for Heater	1.00
52	SP-3-H-BLK	3-Gallon Spotter Handle - Black	1.00
53	10-0387	5/16" x 1" Spotter Wheel Bolt	2.00
54	10-0303	Roller Blade Wheel for Spotter	2.00
55	10-0822	Exhaust Grate for Sniper	2.00
56	10-0419-A	Screw for Sniper Hatch	2.00
57	10-0014	Motor Screw	2.00
58	10-0380	10-32 x 3/8" Screw	2.00
59	10-1024	Motor Mount Plate for Spotter	1.00
60	10-0354	3 Gallon Spotter Motor	1.00
61	10-0386	Stamped Motor Screen	1.00
63	10-1030	Spotter Motor Gasket	1.00
64	10-0027-A	Strain Relief Nut	1.00
65	T-WBLA	Black Wire	

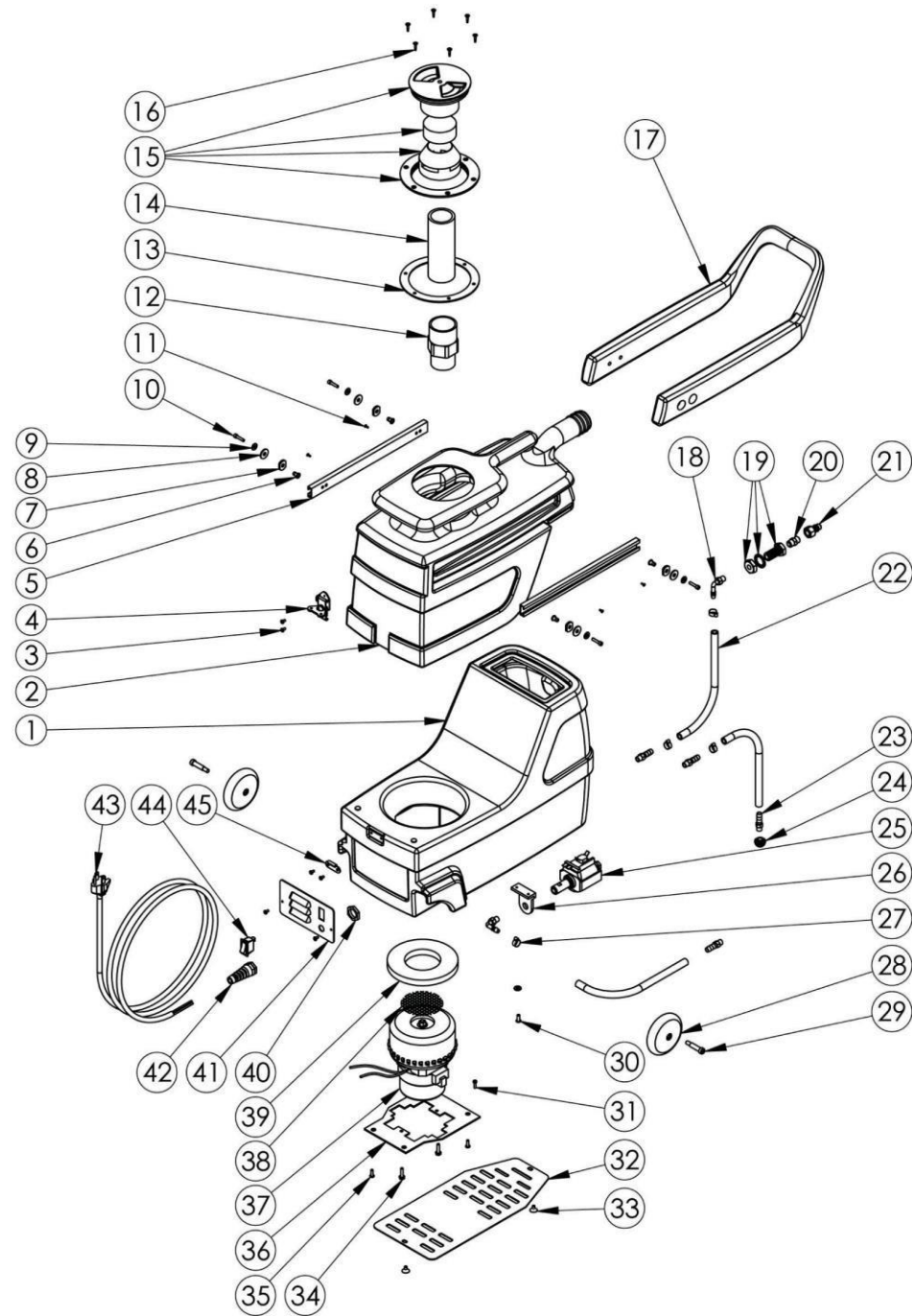


8.0 Machine Schematic Drawing - with Heat



(10) 3-Gallon Spot Extractor Series

5.0 Machine Schematic Drawing - no Heat



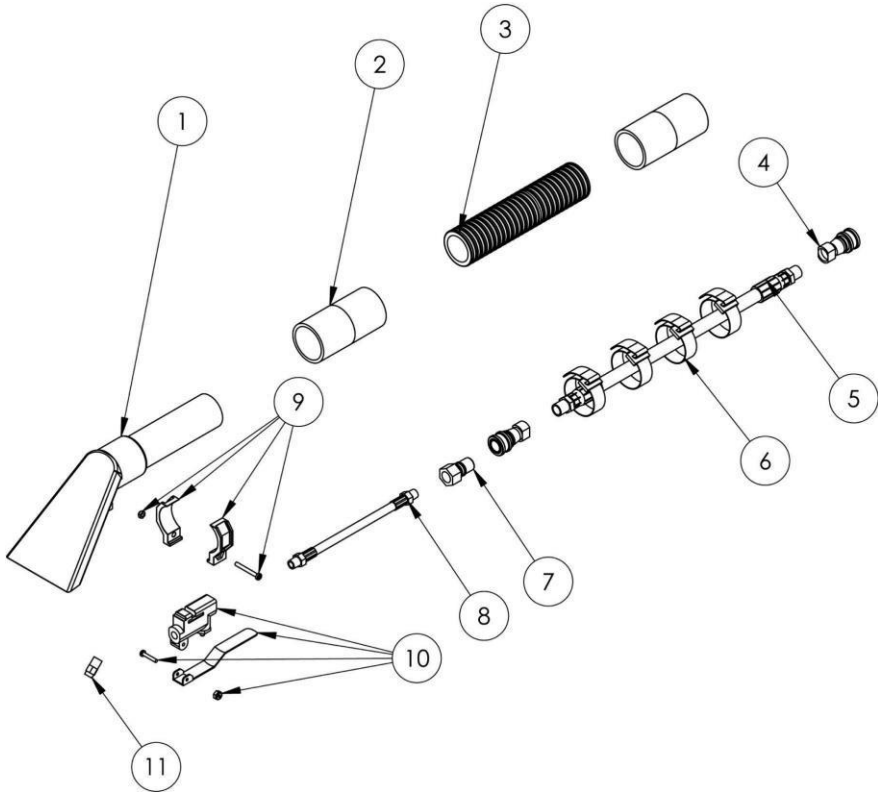
3-Gallon Spot Extractor Series (7)

6.0 Machine Parts List - No Heat

Drawing No.	Item ID	Item Description	Qty. Needed
1	SP-3-ST-BLK	3-Gallon Solution Tank - Black	1.00
2	SP-3-R-GRN	3-Gallon Recovery Tank - Green	1.00
3	10-0383	6-32 x 1/4" Phil Pan Screw	6.00
4	10-0400-D	Latch for Sniper	1.00
5	10-0412	C-Channel for Spotter Handle	2.00
6	10-0414	Rivet for Spotter Handle	4.00
7	10-0384	.125 Thick Nylon Washer	4.00
8	10-0385	.06 Thick Nylon Washer	4.00
9	10-0074	Flat Washer #8 SAE	5.00
10	10-0216	Allen Head Screw for Backpack	4.00
11	10-0379	8-32 x 3/8" Screw	4.00
12	10-0405	1-1/2" PVC SCH40 Slip Thread	1.00
13	10-0302-A	Hatch Cover Gasket for Spotter	1.00
14	10-0416-A	1-1/2" Black ABS Stand Pipe	0.60
15	10-0304	Spotter Cap and Float Assembly	1.00
16	10-0419	Screw for Spotter Hatch	6.00
17	SP-3-H-BLK	3-Gallon Spotter Handle - Black	1.00
18	10-0406	Nylon Barb 90 1/8" NPT 1/4"	2.00
19	80-0017-2	Bulk Head fitting for Spotter	1.00
20	10-0403	1/8" Brass Female Coupler	1.00
21	10-0402	1/8" Male QD	1.00
22	10-0434	Threaded Hose for Spotter	2.50
23	10-0407	1/8" Strait Nylon Barb NPT	4.00
24	10-0845-2	1/8" Strainer for Spotter	1.00
25	10-0300	55 PSI Pump for Spotter	1.00
26	10-0301	L Bracket for Spotter	1.00
27	10-0435	Oetiker Clamp	4.00
28	10-0303	Roller Blade Wheel for Spotter	2.00
29	10-0387	5/16" x 1" Spotter Wheel Bolt	2.00
30	10-0022	Shoulder and Waist Belt Screw	1.00
31	10-0017	Deflector Screw	1.00
32	10-1028	Bottom Base Plate for Spotter	1.00
33	10-0492	Screw for Plates on Spotter	2.00
34	10-0014	Motor Screw	2.00
35	10-0380	10-32 x 3/8" Screw	2.00
36	10-1024	Motor Mount Plate for Spotter	1.00
37	10-0354	3-Gallon Spotter Motor	1.00
38	10-0386	Stamped Motor Screen	1.00
39	10-1030	Spotter Motor Gasket	1.00
40	10-0027-A	Strain Relief Nut	1.00
41	10-1026	Switch Plate for 3-Gallon w/ Heat	1.00
42	10-0027	Pigtail Strain Relief	1.00
43	10-0448	20-Foot Spotter Cord	1.00
44	10-0025	On/Off Switch	2.00
45	10-0400-C	Keeper Latch for Spotter	1.00

7.0 Hoses and Hand Tool Drawing and Parts List

10-0505 4" Stainless Steel Hand Tool with Clear View Head for Machines with No Heat



Parts List

Drawing No.	Item No.	Item Description	Qty. Needed
1	10-0505	4" Stainless Steel Hand Tool with Clear View Head	1.00
2	10-0463	Black Slip Hose Cuff for Spotter	2.00
3	50-1007	7-Foot Black Hose for Spotter	1.00
4	10-0474	1/8" Female QD for Spotter	1.00
5	10-0475	Solution Hose for Spotter	1.00
6	10-0388	Velcro Strap	1.00
7	10-0402	1/8" Male QD for Stainless Steel Hand Tool	1.00
8	10-0403	1/8" Brass Female Coupler	1.00
9	10-0506	Valve Clamp for Stainless Steel Hand Tool	1.00
10	10-0504	Valve for Stainless Steel Hand Tool	1.00
11	10-0502	Jet for Stainless Steel Hand Tool	1.00