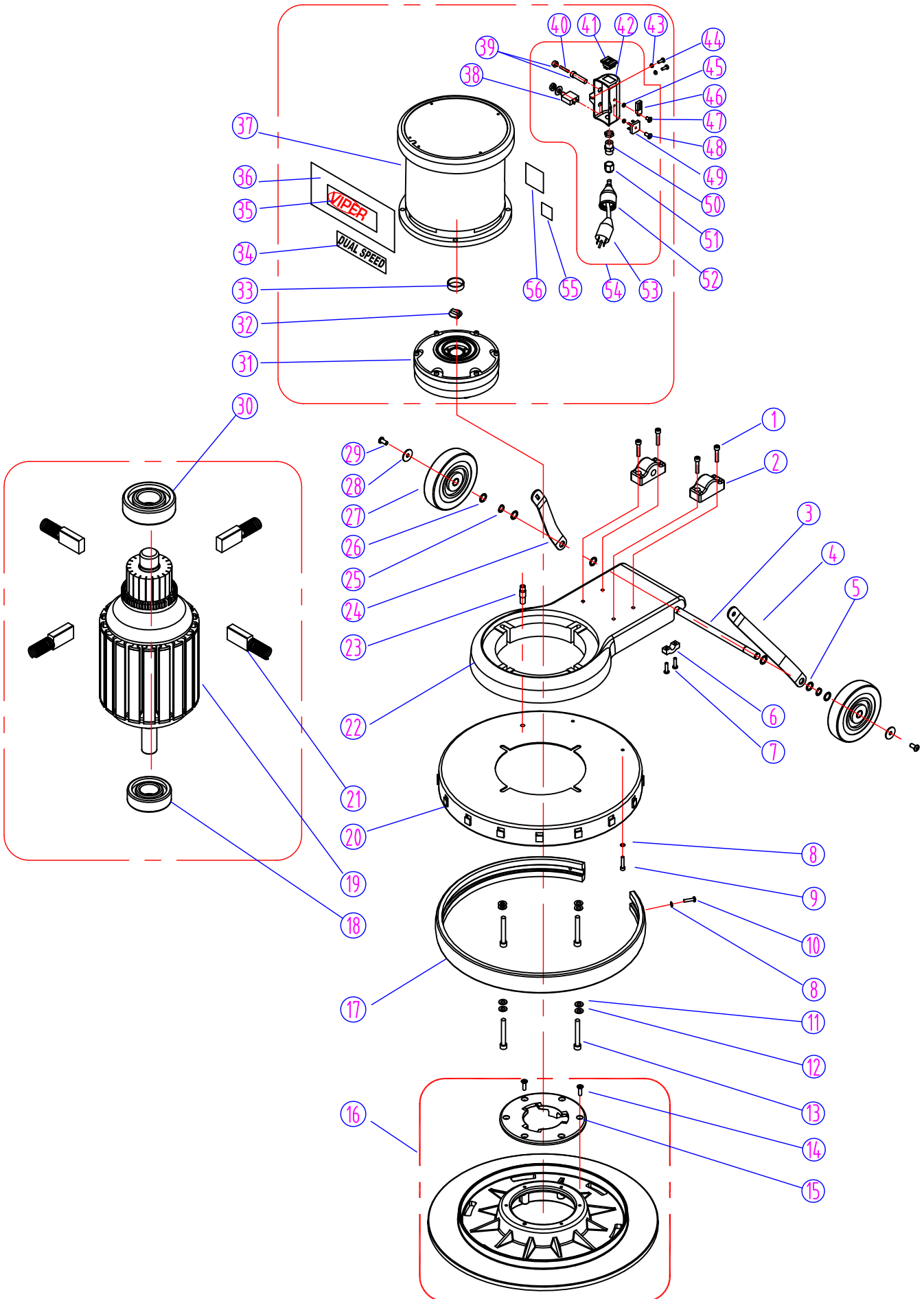


BASE GROUP FOR VN20DS



BASE ASSEMBLY - VN20DS - LIST PRICE (U.S.A.)

DIA NO	PART NUMBER	DESCRIPTION	NO REQ'D	LIST \$ (ea)
1	GT13080	SCREW, M6 X 30	4	\$1.20
2	VF30011	CLAMP BLOCK, HANDLE	1	\$8.29
3	VF30026	AXLE	1	\$11.24
4	VF30020	BRACKET, LEFT HANDLE	1	\$22.47
5	VV20274	WASHER, PLAIN, M13	4	\$2.54
6	GV40235	CLAMP BLOCK, AXLE	2	\$2.01
7	VV13621	SCREW, SELF-TAPPING, M5 X 20	4	\$1.20
8	VF13474A	WASHER, PLAIN, M5	4	\$1.20
9	VF13613	SCREW, M5 X 20	2	\$1.20
10	VA13474	SCREW, M5 X 16	5	\$1.20
11	VF13524	WASHER, PLAIN, M8	4	\$1.20
12	VF13519	WASHER, LOCK, M8	4	\$1.20
13	VF13618	SCREW, 5/16" X 2 1/4"	4	\$1.61
14	MF-VF002-4A	SCREW, SELF-TAPPING, 1/4"-1"	6	\$1.20
15	MF-VF002-2	CLUTCH PLATE	1	\$21.67
16	MF-VF022	PAD HOLDER, 19-INCH	1	\$102.99
17	VF30004	BUMPER, 20-INCH	1	\$11.77
18	ZD48315	BEARING, #6002Z	1	\$25.68
19	ZD48200	SHAFT & ROTOR ASSEMBLY	1	\$163.44
20	VF30006	SHROUD, 20-INCH	1	\$85.33
21	VF99926-2	KIT, CARBON BRUSH (4 PCS)	1	\$43.34
22	VF30008	ALUMINUM BASE, MOTOR	1	\$73.56
23	VF40152	HOSE BARB	1	\$5.08
24	VF30019	BRACKET, HANDLE, RIGHT	1	\$22.47
25	VF13520	WASHER, LOCK	2	\$1.20
26	VF50119	WASHER, LOCK, M12	2	\$1.20
27	VF48202	WHEEL, 5"	2	\$23.54
28	VF13666	WASHER, M6	2	\$1.20
29	VF44012	SCREW, M6 X 12.7	2	\$1.20
30	ZD40225	BEARING, #6203Z	1	\$26.35
31	VF999802B	GEAR BOX	1	\$379.58
32	VF99021	COULPING	1	\$10.70
33	MT01102	SLEEVE	1	\$2.68
34	VF40990	LABEL, DUAL SPEED	1	\$5.08
35	VF41079	LABEL, VIPER	1	\$13.91
36	ZD48310	LABEL, MOTOR	1	\$9.50
37	ZD48000	MOTOR, DUAL SPEED, 1.5 HP	1	\$748.06
38	ZD48320	CIRCUIT BREAKER, 30A	1	\$14.31
39	ZD48321	FUSE CARTRIDGE	1	\$9.23
40	ZD48322	FUSE	1	\$6.96
41	VA91347	SWITCH ASSEMBLY	1	\$10.17
42	ZD48309	SHELL	1	\$14.58
43	VF13604	WASHER, TOOTH, M5	2	\$1.20
44	VF14214	SCREW, M5 X 8	2	\$1.20
45	GT13014	NUT, NYLON INSERT, M4	2	\$1.20

46	ZD48316-A	TRIAC (serial #0340 +)	1		\$23.01
	VF99006-1	TRIAC (up to serial #0339)	1		\$23.01
	ZD48317	OBSOLETE, SEE ZD48316-A	1		\$0.00
	ZD48318	OBSOLETE, SEE ZD48316-A	1		\$0.00
	ZD48323	OBSOLETE, SEE ZD48316-A	1		\$0.00
47	GT13048	SCREW, M4 X 12	1		\$1.34
48	VA13473	SCREW, M4 X 16	1		\$1.20
49	VF44204	RECTIFIER	1		\$48.88
50	VV67405	CORD STRAIN RELIEF	1		\$5.62
51	VV67405-1A	NUT	1		\$1.20
52	AS41902	PLUG PROTECTOR, LARGE FEMALE	1		\$6.69
53	VF999794	CORD, MOTOR	1		\$10.43
54	ZD48330	KIT, SPEED ADJUSTMENT	1		\$119.57
55	VF40994	LABEL, READ MANUAL	1		\$1.20
56	VF40997	SERIAL TAG	1		\$1.20

*PRICING IS FOR U.S.A. ONLY. CANADIAN CUSTOMERS PLEASE CALL 800-668-8400...OPTION #2