

# SaniCell™ Tank

Continuous Fixture Cleaning and Drain Maintenance System



technical concepts  
Innovative Hygiene Solutions

## SaniCell™ System Delivers Purinel® SC Super Concentrated Fixture Cleaner for “Sparkling Clean Toilets.”

Concentrated formulas attack and eliminate sources of odor in the bowl, clean fixture surfaces and maintain drains continuously.

- Utilizes innovative Fuel Cell Technology battery-free operation
- Refill cycle chip for 30 or 60 day cleaning
- Easy installation - discreetly installs inside tank (clips onto rear wall of tank)
- Water resistant dispenser with latching cover
- Concentrated Purinel® Formula - proven cleaning performance of Purinel® in a 60ml refill
- Purinel® is TC's proprietary cleaning and drain maintaining formula
- Safe for septic and water treatment systems



### SaniCell™ for Tank Toilets:

| Stock# | Description |
|--------|-------------|
|--------|-------------|

|             |                          |
|-------------|--------------------------|
| 750375..... | SaniCell™ Tank Dispenser |
|-------------|--------------------------|

(Includes: Sanicell Dispenser, 30/60 day chip and clips for flapper or tower type flush valves.)

Case Pack: 12; Case weight: 5.7 lbs.; Case Cube: 0.60ft<sup>3</sup>



### SaniCell™ Refills:

| Stock# | Description |
|--------|-------------|
|--------|-------------|

|             |                  |
|-------------|------------------|
| 750865..... | Purinel® SC Blue |
|-------------|------------------|

|             |                   |
|-------------|-------------------|
| 750378..... | Purinel® SC Clear |
|-------------|-------------------|

Case Pack: 6; Case weight: 2.1 lbs.; Case Cube: 0.09ft<sup>3</sup>

# SaniCell™ Tank

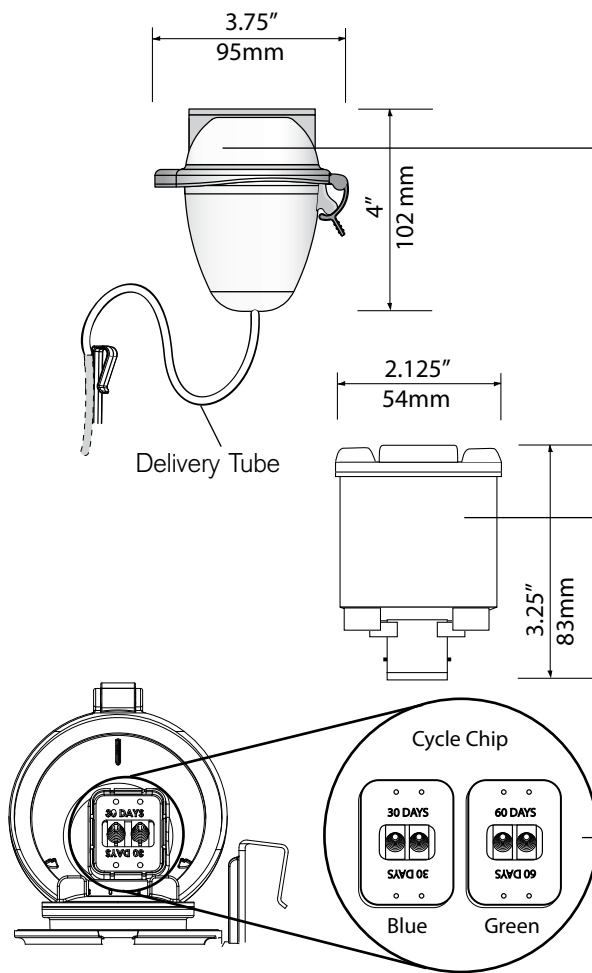
## Specifications

### Dispenser:

- Latching cover
- Color: White/Clear
- Size: 3.75" W x 4" Dp x 4" Ht  
[95 W x 102 Dp x 102 Ht mm]
- Delivery Tube: 17.50" Lg  
[445 mm]

### Refill:

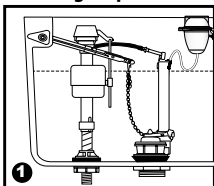
- Volume: 60ml
- Refill life: 30 or 60 days
- Size: 2.125" Dia x 3.25" Ht  
[54 Dia x 83 Ht mm]
- CycleChip: 1" W x 1.25" Lg  
[25 W x 32 Lg mm]



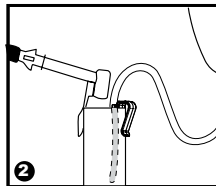
## SaniCell™ Tank System

### Quick Installation Instruction:

#### Installing Dispenser

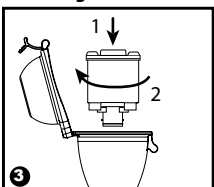


1 Install Dispenser in Tank

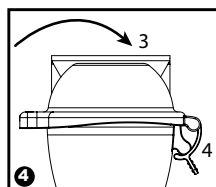


2 Use Clear Clip

#### Installing Refill



3 Push in Refill and Turn



4 Close Lid and Latch

### Warranty:

Lifetime against defects in parts and workmanship.



**technical concepts**  
Innovative Hygiene Solutions

**World Headquarters:**  
Serving North and South America

Technical Concepts LLC  
1301 Allanson Road  
Mundelein, Illinois 60060 U.S.A.  
**Toll Free: 1-800-551-5155**  
**Fax: 1-800-551-5046**

[www.technicalconcepts.com](http://www.technicalconcepts.com)

**European Headquarters:**  
Serving Europe, Africa and Middle East

Technical Concepts International Ltd.  
Peterborough, PE2 6WA, England  
Phone: +44 (0)870 568 6824

**Asian Headquarters:**  
Serving Asia and Pacific

Technical Concepts Asia  
14100, Penang, Malaysia  
Phone: (60) 4 508 5008

