

PULLMAN-HOLT



Model 45HEPA-WD

UnoClean
WWW.UNCLEAN.COM
TOLL FREE: 1-888-226-2724



Model 45HEPA-D

Model 45 HEPA Vacs Model 45HEPA-D & Model 45HEPA-W/D

Equipped with a powerful 2-horsepower motor and an extra large capacity HEPA filter system, the model 45 offers the air flow efficiency of vacuums costing three times as much. Low noise allows for use in sound sensitive areas. The model 45 is manufactured to the same high standards as our larger HEPA vacuums, so it will withstand years of hard use. Available in wet/dry or dry only.

- **Powerful Vacuum** – A 2 horsepower, 2 stage by-pass, 11.1 amp motor delivers 105" waterlift and 110 CFM. Plenty of power for fast pick-up of wet and dry hazardous materials at an affordable price.
- **True 99.97% Type A Large Capacity HEPA Filter** – Individually tested and certified to have a minimum efficiency of 99.97% at .3 microns in accordance with IEST-RP-CC001 test requirements.

Pullman-Holt HEPA Filter System

HEPA Filter – Made from a single piece of high-grade HEPA media to eliminate the possibility of leaks. (B702340)

"Never Clog" Filter Bag – Sheds dirt and debris like a duck sheds water. Shakes clean to maintain maximum airflow. (B000517)

Spacer & Wet Shut-off – Holds and protects HEPA filter. Equipped with a float cage to prevent over-filling. (B260799)

Foam Filter (not shown) – Mounted over the filter cage to prevent debris from interfering with the operation of the liquid shut-off. (B703966)



Model 45HEPA-D

Model 45HEPA-WD

Model 45 HEPA Vacs

Model 45HEPA-D & 45HEPA-WD



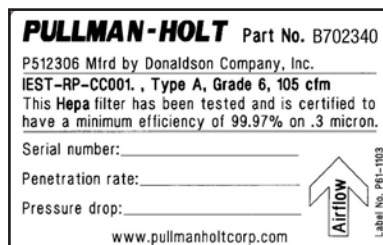
Specifications:

	45HEPA-W/D	45HEPA-D
Style:	wet/dry	dry
horsepower:	2	2
waterlift:	105"	105"
cfm:	110	110
recovery:	10 gallon	1 bu
shipping weight:	43 lbs.	33 lbs.
product code:	B160487	B160414

Features:



Three labels included: HEPA, Asbestos and Lead.



Each Pullman-Holt HEPA filter is tested and certified to provide a minimum efficiency of 99.97% at .3 microns based on IEST-RP-CC001 test requirements.

Included Attachments & Accessories:



Model 45HEPA-WD:

Tool Kit (B160327)

- 5' two-piece metal wand (B521007)
- 10' X 1.5" crushproof hose (B702361)
- 14" floor brush tool (B527095)
- 14" floor squeegee tool (B527094)
- 17" crevice tool (B701615)
- 3" round dusting tool (B000394)

Replacement Filters

- Disposable paper filter bags 3 each (B700408)

Disposable Poly Bags

- 3 each (B524263)



Model 45HEPA-D

Tool Kit (B160424)

- 5' two-piece metal wand (B521007)
- 10' X 1.5" crushproof hose (B702361)
- 14" floor brush tool (B527095)
- 17" crevice tool (B701615)
- 3" round dusting tool (B000394)

Replacement Filters

- Disposable paper filter bags 3 each (B700408)

Disposable Poly Bags

- 3 each (B524263)



High efficiency 2-ply enclosed, disposable paper filter bag acts as the primary filter to trap and hold dry material for easy handling and disposal. (B700408)