

ITEM NO.	QTY.	PART NO.	DESCRIPTION	ITEM NO.	QTY.	PART NO.	DESCRIPTION
1	1	P791	BASE, SPYDER 6-GALLON	59	6	H876	1/2" FLAT WASHER
2	2	H296	COOLING FAN WIRE GUARD	60	2	B111	ADAPTER, 1/4" M x 1/4" FM
3	8	H206	SCREW, HEX HD., SELF-TAPPING, #10-32 x 1/2" LG.	61	1	B107	NIPPLE, 1/4" HEX
4	1	H330 (HP60)	PLATE, SINGLE MANIFOLD	62	1	AH157	HOSE, 3/8" PULSE x 7" LG.
5	24	H210	WASHER, FLAT, 1/4"	63	2	H413	WASHER, NYLON
6	18	H202	BOLT, HEX HD., 1/4-20 x 3/4" LG.	64	1	B106	NIPPLE, 1/4" CLOSE
7	20	H216	LOCKNUT, 1/4-20 HEX, NYLON INSERT	65	1	B102	QUICK DISCONNECT, 1/4" FEMALE
8	1	P735	SINGLE MANIFOLD	66	1	B186	ELBOW, 90 DEG, 3/8" M x FM
9	1	G004	GASKET, VACUUM MOTOR	67	2	H299	WASHER, .688 x 1.50 x .075
<b>10</b>	<b>1</b>	<b>C302</b>	<b>MOTOR, 3 STAGE 115V</b>	68	1	B216	NIPPLE, 3/8" CLOSE
11	1	G059	EXHAUST BOOT, PLASTISOL	69	1	B210	BUSHING, 1/2 m x 3/8 fm
12	2	H217	HOSE CLAMP	70	1	B119A	FILTER STRAINER, 1/2"
13	3	H768	BOLT, 1/4-20 x 3/4" LG. SERRATED FLANGE	71	2	H203	HEX BOLT, 1/4-20 x 1-1/4" LG.
14	3	H501	3-STAGE VACUUM SUPPORT	72	2	H213	1/4" LOCK WASHER
15	3	H201	BOLT, 1/4-20 x 1/2" LG. HEX HEAD	73	4	H211	WASHER, 1/4" ID x 1" OD
16	1	PH627 (HP60)	HOSE, 1-1/2" VACUUM x 22" LG.	74	4	G052	BUNA WASHER, 1-1/8" OD x 3/16" ID
17	1	H300	HOSE CUFF, 1-1/2"	75	2	H215	1/4-20 HEX NUT
<b>18</b>	<b>1</b>	<b>C305</b>	<b>PUMP, 100 psi</b>	76	1	P793	VACUUM TANK, SPYDER
19	12	H289	WASHER, FLAT, #10	77	1	H225	DRAIN VALVE, 1-1/2"
20	2	H273	KEP-NUT, #10-32, ZINC	78	1	H226	DRAIN SPOUT, 45 DEG.
21	2	H222	#10-32 x 1-1/4" LG. PHIL. PAN HD. SCREW	79	2	H229	INLET FITTING, PVC, GRAY, 1-1/2"
22	1	B105	REDUCER, 3/8" M x 1/4" FM	80	1	H244	ADAPTER, PVC, 1-1/2"
23	1	B136	90 DEG 1/4" M x M	81	1	PH633-07.5	PIPE, PVC, 1-1/2" x 7-1/2" LG.
24	1	AH184	HOSE, 3/8" PULSE x 13" LG.	82	1	P755	ELBOW FOR FLOAT ASSEMBLY
25	1	B108	CHECK VALVE, 1/4"	83	1	H235	FLOAT CAGE
26	1	B207	90 DEG 1/4" FM x FM	84	1	G060	VACUUM LID GASKET
27	1	H528	BRACKET, HEATER MOUNTING	85	1	G056	LID, VACUUM TANK
28	1	H439	HEATER ASSEMBLY, DUAL CAPSULE	86	6	H304	SCREW, #8-32 x 5/8" LG. PHIL. OVAL
<b>29</b>	<b>2</b>	<b>E571</b>	<b>HEATING ROD, 600W, 115V</b>	87	1	A925	INLET ELBOW ASSEMBLY
30	2	E573	THERMOSTAT, 210 DEG AUTO	88	1	G001	GASKET, INLET, 1-1/2"
31	2	E574	THERMOSTAT, 375 DEG MANUAL	89	1	H636	3-HOLE SWITCH PLATE
32	8	H919	NUT, HEX, #4-40	90	4	H246	SCREW, #8-32 x 3/8" LG. SOCKET HD. CAP
33	4	B103	90 DEG 1/4" M x FM	91	3	E592	SWITCH, RED LIGHTED
34	1	B113	1/4" TEE (ALL FEMALE)	92	2	H375	HANGER, WIRE FORMED
35	1	B124	VALVE, 175 psi RELIEF				
36	1	B109	FITTING, 1/4" BARB x 1/4" MPT				
37	2	B116	FERREL (FOR 1/4" HOSE)				
38	1	PH634 (HP60)	HOSE (1/4" KURITEK x 25" LG.)				
39	1	B110	FITTING, 1/4 BARB x 1/4 FM SWIVEL				
40	1	AH106	HOSE, 3/8" SURGE x 20" LG.				
41	1	B172	90 DEG 1/2" B x 3/8" MP				
42	2	H347	HOSE CLAMP				
43	1	PH615-28	HOSE, 1/2" KURITEK x 28" LG.				
44	1	B160	FITTING, 1/2 BARB x 3/8 FM SWIVEL				
45	4	H667	CASTER, 3" DIA.				
46	1	H220	CORD STRAIN RELIEF FITTING				
47	1	H221	1/2" STEEL LOCK NUT				
48	1	E531	POWER CORD, 12ga, 25'				
49	1	P792	SOLUTION TANK, SPYDER				
50	1	P792-1	LID, SPYDER SOLUTION TANK				
51	1	H379	BRACKET, FRONT HINGE				
52	4	H770	BOLT, 1/4-20 x 1/2" LG. SERRATED FLANGE				
53	2	H204	BOLT, 1/4-20 x 1-3/4" LG. HEX HEAD				
54	1	H912	BRACKET, REAR LATCH (SPYDER & FIREBIRD)				
55	2	H922	THUMB SCREW, BLACK PLASTIC				
56	2	H390	"L" BRACKET				
57	8	H877	#10 LOCK WASHER				
58	8	H230	SCREW, #10-32 x 1/2" LG. PHIL. PAN HD.				

REVISIONS				
ZONE	REV.	DESCRIPTION	DATE	APPROVED
	A	NEW EXHAUST PIPE ON VACUUM MOTOR	2/16/04	
	B	REPLACED H212 WITH H876	4/23/04	
	C	ADDED THUMB SCREWS	7/20/04	

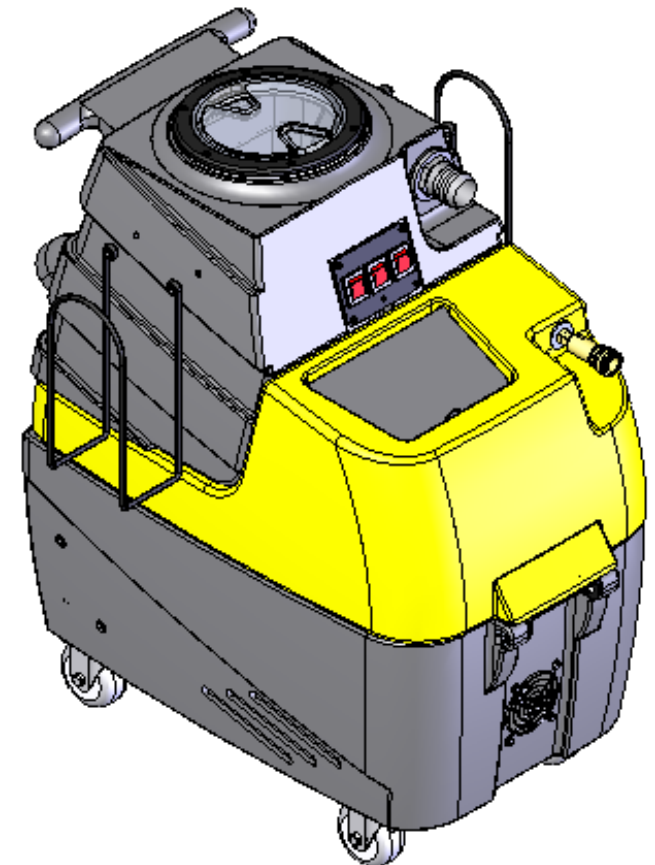
MACHINE ALSO COMES EQUIPPED WITH A 3" UPHOLSTERY TOOL, A 15' VACUUM HOSE, AND A 15' SOLUTION HOSE:

- A935 (1): 5-1/2" PIGTAIL HOSE
- A942 (1): 15' SOLUTION HOSE
- B101 (2): 1/4" MALE QUICK DISCONNECT
- B102 (1): 1/4" FEMALE QUICK DISCONNECT
- B104 (1): 1/4" ADAPTER (MPT x FMPT)
- B146 (1): SPRAY JET
- G147 (5): VELCRO STRAP
- H282 (1): HAND TOOL
- H295 (1): 15' VACUUM HOSE

ADDITIONAL COMPONENTS NOT SHOWN:

WIRING HARNESS COMPONENTS

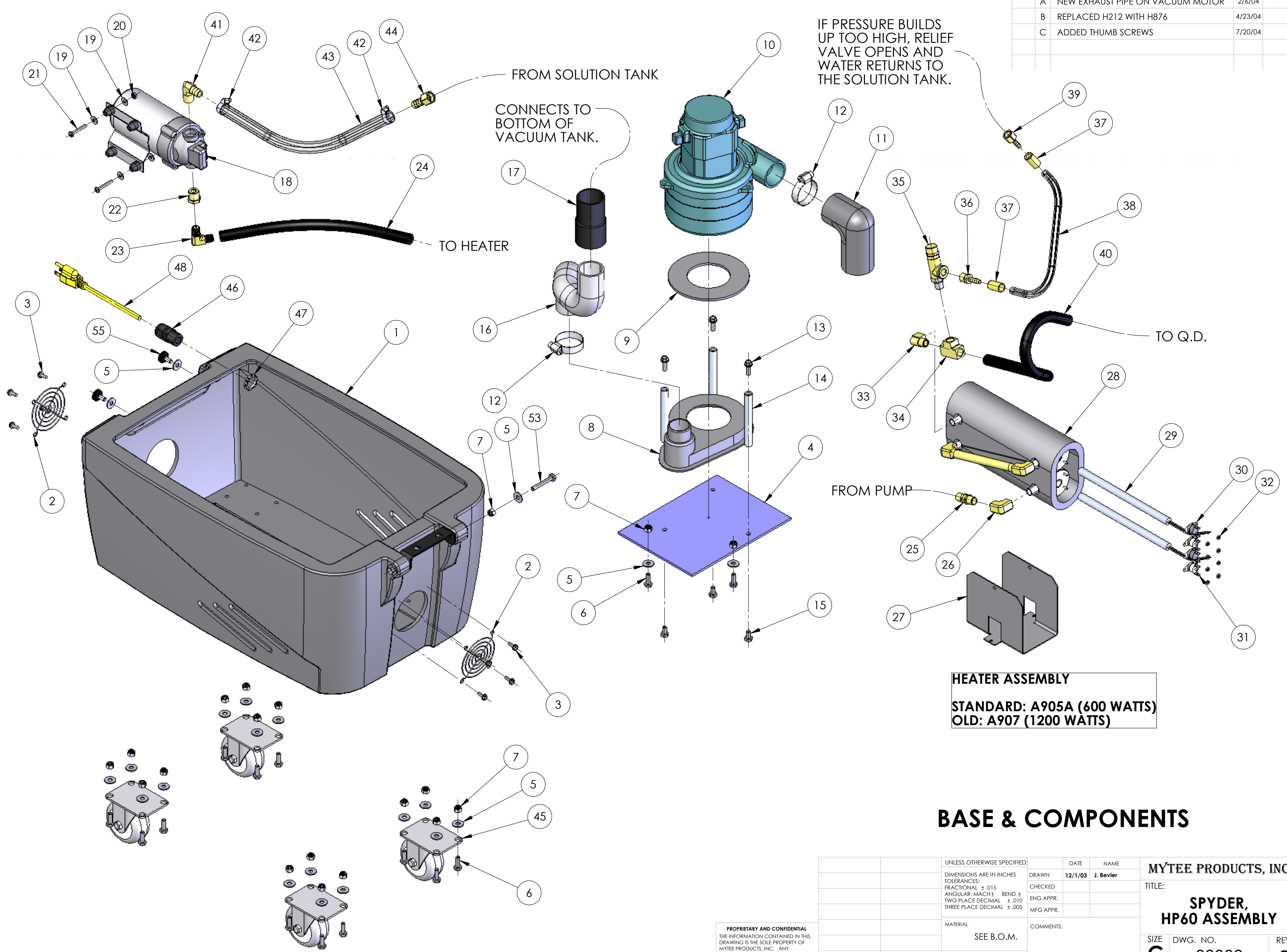
- E513 - WIRE TIES, SMALL
- E514 - WIRE TIES, LARGE
- L871 - BOX, SPYDER
- L871A - BOX, LOWER SUPPORT
- L871B - BOX, SPYDER TRAY
- L863 - LABEL SET, SPYDER
- L829 - LABEL SET, SAFETY



**PROPRIETARY AND CONFIDENTIAL**  
 THE INFORMATION CONTAINED IN THIS DRAWING IS THE SOLE PROPERTY OF MYTEE PRODUCTS, INC. ANY REPRODUCTION IN PART OR AS A WHOLE WITHOUT THE WRITTEN PERMISSION OF MYTEE PRODUCTS, INC. IS PROHIBITED.

UNLESS OTHERWISE SPECIFIED:		DATE	NAME	<b>MYTEE PRODUCTS, INC.</b> TITLE: <b>SPYDER, HP60 ASSEMBLY</b> SIZE <b>C</b> DWG. NO. <b>00008</b> REV <b>C</b> SCALE: 1:8 DO NOT SCALE DRAWING SHEET 1 OF 4	
DIMENSIONS ARE IN INCHES		DRAWN	12/1/03		J. Bevier
TOLERANCES:		CHECKED			
FRACTIONAL ± .015 ANGULAR: MACH ± TWO PLACE DECIMAL ± .010 THREE PLACE DECIMAL ± .005		ENG APPR.			
MATERIAL	SEE B.O.M.		COMMENTS:		
FINISH					
NEXT ASSY	USED ON	USED ON:			
APPLICATION					

REVISIONS				
ZONE	REV.	DESCRIPTION	DATE	APPROVED
A		NEW EXHAUST PIPE ON VACUUM MOTOR	2/16/04	
B		REPLACED H212 WITH H876	4/23/04	
C		ADDED THUMB SCREWS	7/20/04	



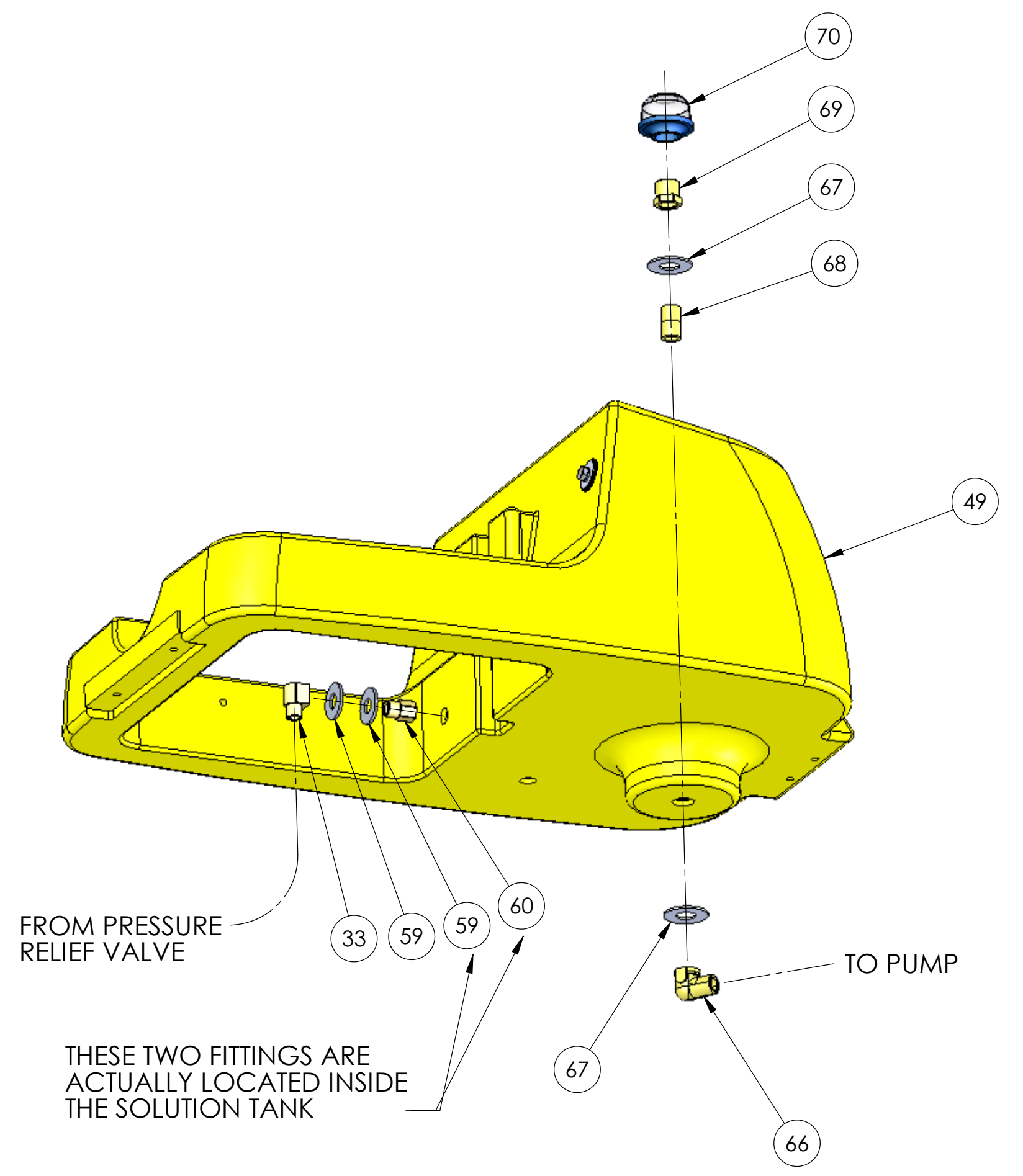
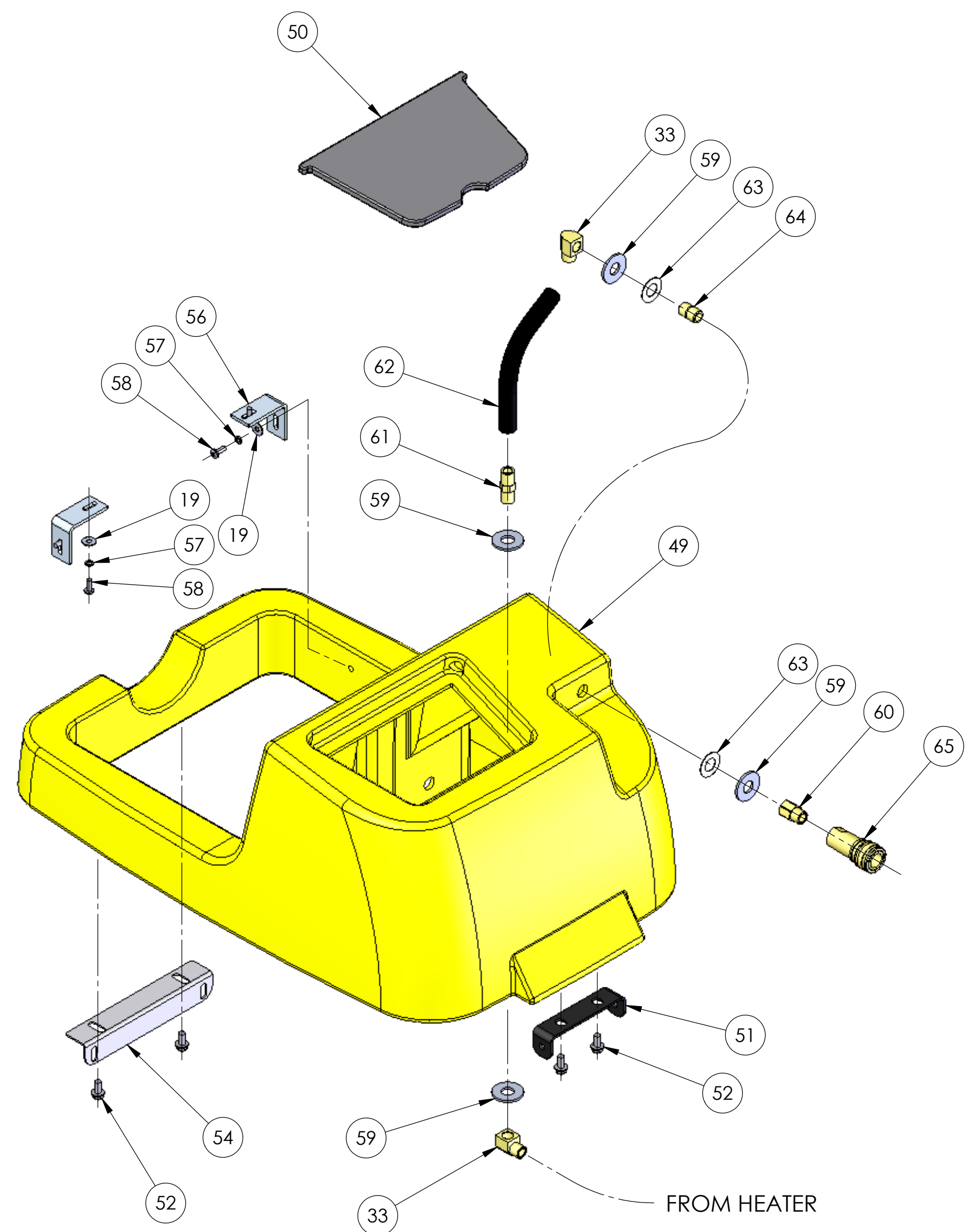
**HEATER ASSEMBLY**  
**STANDARD: A905A (600 WATTS)**  
**OLD: A907 (1200 WATTS)**

## BASE & COMPONENTS

**PROPRIETARY AND CONFIDENTIAL**  
 THE INFORMATION CONTAINED IN THIS DRAWING IS THE SOLE PROPERTY OF MYTEE PRODUCTS, INC. ANY REPRODUCTION IN PART OR AS A WHOLE WITHOUT THE WRITTEN PERMISSION OF MYTEE PRODUCTS, INC. IS PROHIBITED.

UNLESS OTHERWISE SPECIFIED:		DATE	NAME	MYTEE PRODUCTS, INC.
DIMENSIONS ARE IN INCHES TOLERANCES: FRACTIONAL: ± .015 ANGULAR: MACH ± BEND ± TWO PLACE DECIMAL ± .010 THREE PLACE DECIMAL ± .005		12/1/03	J. Bevier	
MATERIAL		COMMENTS:		TITLE:
SEE B.O.M.				<b>SPYDER, HP60 ASSEMBLY</b>
NEXT ASSY	USED ON	FINISH	USED ON:	SIZE DWG. NO. REV
				<b>C 00008 C</b>
APPLICATION			SCALE: 1:4	DO NOT SCALE DRAWING SHEET 2 OF 4

REVISIONS				
ZONE	REV.	DESCRIPTION	DATE	APPROVED
	A	NEW EXHAUST PIPE ON VACUUM MOTOR	2/16/04	
	B	REPLACED H212 WITH H876	4/23/04	
	C	ADDED THUMB SCREWS	7/20/04	

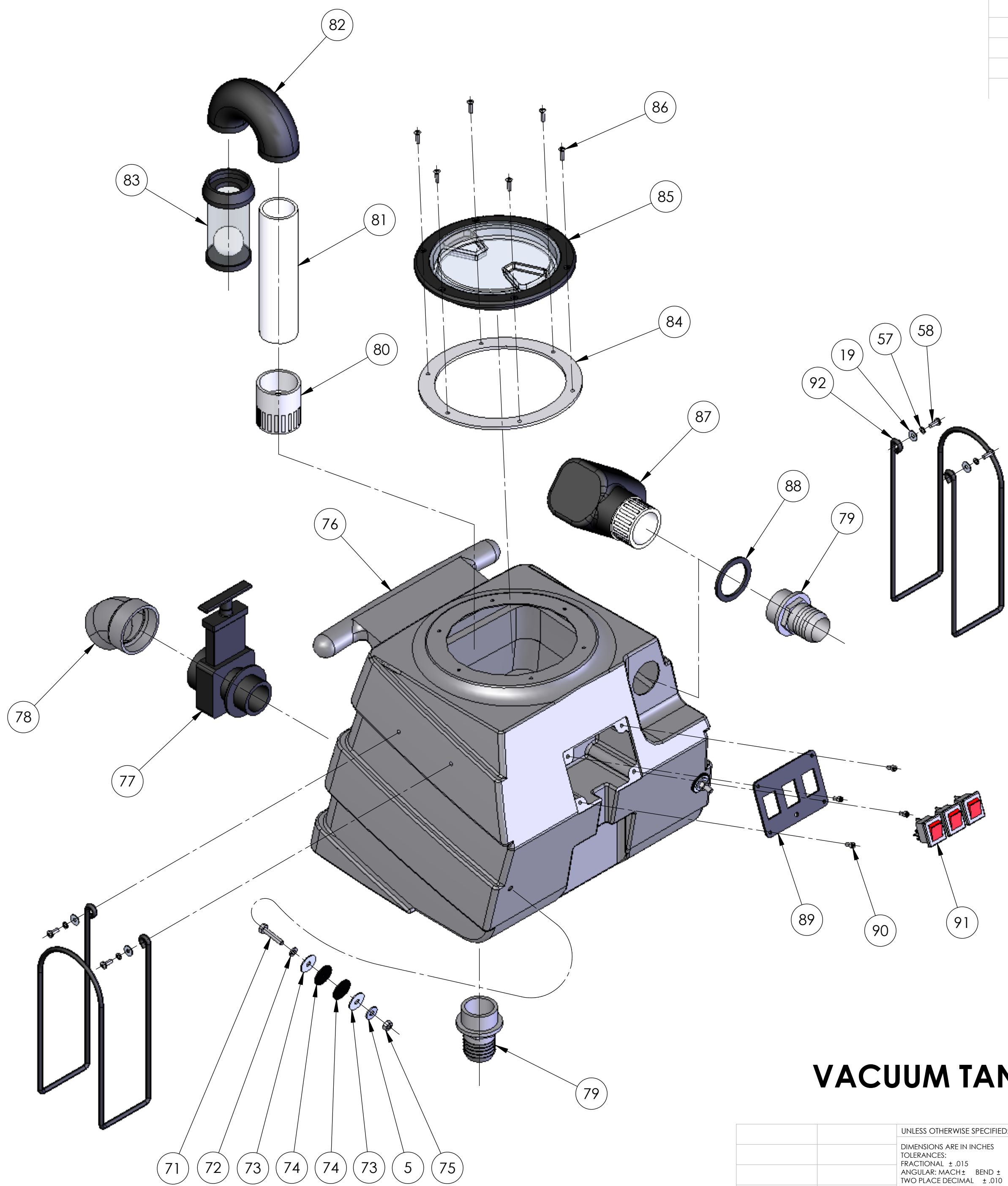


# SOLUTION TANK & COMPONENTS

**PROPRIETARY AND CONFIDENTIAL**  
 THE INFORMATION CONTAINED IN THIS DRAWING IS THE SOLE PROPERTY OF MYTEE PRODUCTS, INC. ANY REPRODUCTION IN PART OR AS A WHOLE WITHOUT THE WRITTEN PERMISSION OF MYTEE PRODUCTS, INC. IS PROHIBITED.

UNLESS OTHERWISE SPECIFIED:		DATE	NAME	<b>MYTEE PRODUCTS, INC.</b> TITLE: <b>SPYDER, HP60 ASSEMBLY</b> SIZE <b>C</b> DWG. NO. <b>00008</b> REV <b>C</b> SCALE: 1:4 DO NOT SCALE DRAWING SHEET 3 OF 4
DIMENSIONS ARE IN INCHES		DRAWN	12/1/03 J. Bevier	
TOLERANCES:		CHECKED		
FRACTIONAL ± .015		ENG APPR.		
ANGULAR: MACH ±		MFG APPR.		
TWO PLACE DECIMAL ± .010		COMMENTS:		
THREE PLACE DECIMAL ± .005				
MATERIAL		SEE B.O.M.		
FINISH				
NEXT ASSY	USED ON	USED ON:		
APPLICATION				

REVISIONS				
ZONE	REV.	DESCRIPTION	DATE	APPROVED
	A	NEW EXHAUST PIPE ON VACUUM MOTOR	2/16/04	
	B	REPLACED H212 WITH H876	4/23/04	
	C	ADDED THUMB SCREWS	7/20/04	



71 72 73 74 74 73 5 75  
 THESE FASTENERS HOLD THE SOLUTION TANK AND VACUUM TANK TOGETHER.

**PROPRIETARY AND CONFIDENTIAL**  
 THE INFORMATION CONTAINED IN THIS DRAWING IS THE SOLE PROPERTY OF MYTEE PRODUCTS, INC. ANY REPRODUCTION IN PART OR AS A WHOLE WITHOUT THE WRITTEN PERMISSION OF MYTEE PRODUCTS, INC. IS PROHIBITED.

# VACUUM TANK & COMPONENTS

UNLESS OTHERWISE SPECIFIED:		DATE	NAME	MYTEE PRODUCTS, INC.
DIMENSIONS ARE IN INCHES TOLERANCES: FRACTIONAL: ± .015 ANGULAR: MACH ± BEND ± TWO PLACE DECIMAL ± .010 THREE PLACE DECIMAL ± .005		12/1/03	J. Bevier	
MATERIAL	SEE B.O.M.	ENG APPR.	MFG APPR.	SIZE <b>C</b>
FINISH		COMMENTS:		DWG. NO. <b>00008</b>
NEXT ASSY	USED ON	USED ON:		REV <b>C</b>
APPLICATION				SCALE: 1:4 DO NOT SCALE DRAWING SHEET 4 OF 4