

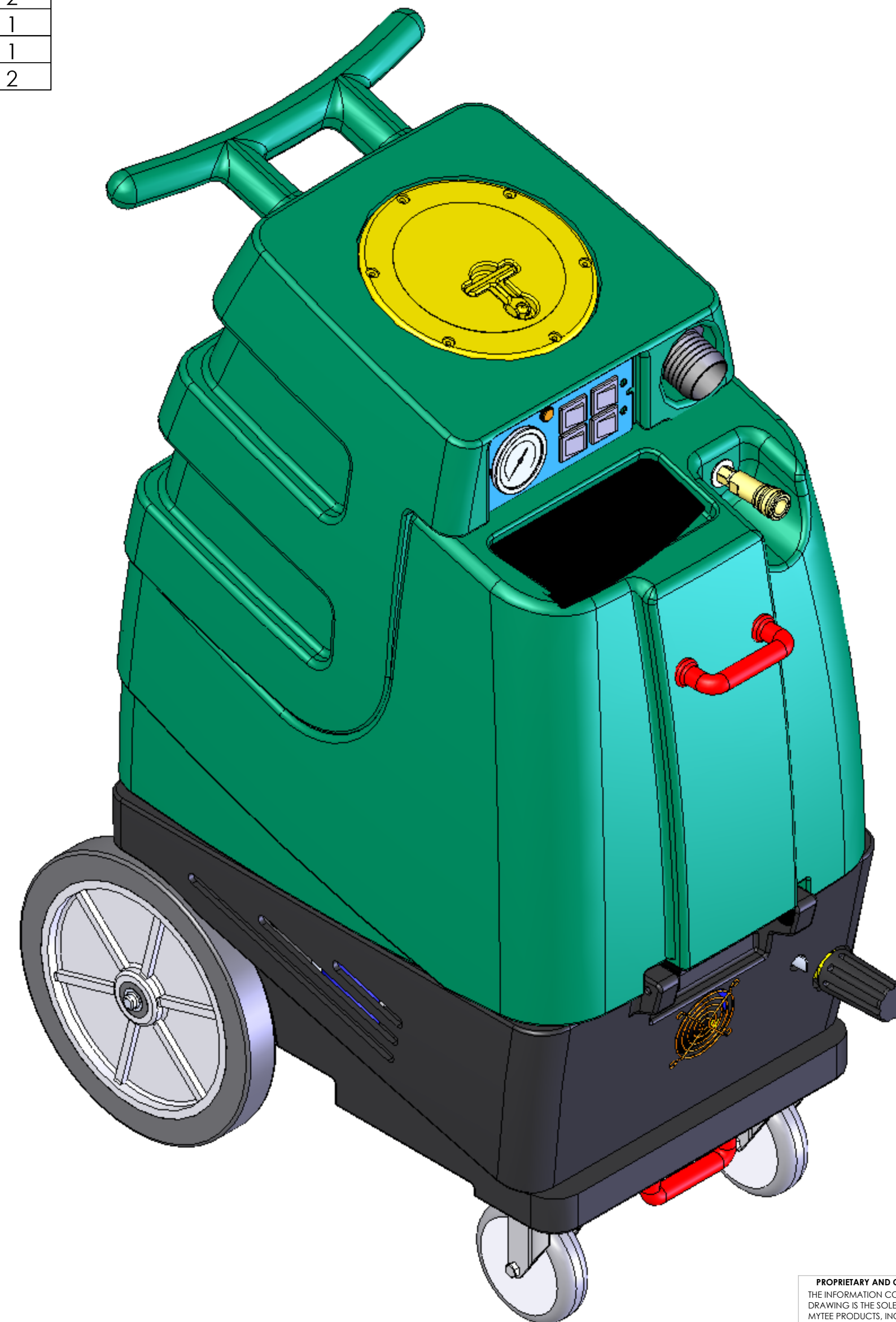
ITEM NO.	PART NO.	DESCRIPTION	QTY.
1	H219	cap, axle, 1/2"	2
2	H251	wheel, 12"	2
3	H371	axle, 1/2" x 18-1/2", sp, breeze	1
4	H296	guard, cooling fan, wire	2
5	G131	connector, cord lock	2
6	E550	power cord, pigtail, 30", 12/3, yel	2
7	H220	fitting, strain relief, cord	2
8	H221	nut, lock, 1/2" steel	2
9	P731	base, speedster	1
10	H485	handle, breeze	2
11	H666	caster, 5"	2
12	H601	plate, manifold, parallel	1
13	P750	manifold, dual vac, parrallel	1
14	G004	gasket, vacuum motor	2
15	PH628-22	vac hose, 2", wire reinforced	1
16	G059	exhaust boot, plastisol	2
17	C302	vac motor, 3 stage, 115V, tangential	2
18	H544	cuff, 2"	1
19	H501	vac support, 3 stage, 4-1/16"	6
20	H922	knob, thumb screw, for bracket	2
21	H912	bracket, rear, fb/spy	1
22	P732	sol tank, speedster	1
23	H390A	Bracket, L 070-036	2
24	B105	bushing, brass, 3/8"mpt x 1/4"	3
25	B136	elbow, brass, 90 deg, 1/4" mpt x 1/4" mpt	3
26	AH105	hose, 3/8" x 17-1/2", (OAL), f x -fsw, surge, 1600psi	2
27	AH108S	sol hose, 1/4" x 24 1/2", (OAL), f x fsw, 3000psi	2
28	PH615-18	sol hose, 1/2" kuri 100psi	1
29	B175	filter, cup, in-line	1
30	PH615-6	sol hose, 1/2" kuri 100psi	1
31	B172	elbow, brass, 90 deg, 1/2" barb x 3/8"mpt	1
32	B186	elbow, brass, 90 deg, 3/8"mpt x 3/8" fmpt	2
33	PH634-22	sol hose, 1/4" kuri 150psi	1
34	B110	adapter, brass, 1/4" sw barb x 1/4" fpt, w/gasket	2
35	PH634-25	sol hose, 1/4" kuri 150psi	1
36	B109	adapter, brass, 1/4" barb x 1/4" mpt	2
37	H902	valve, prime, high pressure	1
38	B103	elbow, brass, 90 deg, 1/4"mpt x 1/4" fpt	6
39	C313C	regulator, 450 psi	1
40	B246	plug, brass, 3/8" mpt, hex	2
41	C313	pump, 450 psi, 115V	1
42	B107	nipple, brass, 1/4"m, hex	2
43	G018	cover, sol tank (sp)	1
44	H378	bracket, front hinge, sp/fb	1
45	B160	adapter, brass, 1/2" barb x 3/8" fsw, ball end	1
46	H299	washer, 11/16" id x 1-1/2" od x .075, s/s	2
47	B216	nipple, brass, 3/8" x close	1
48	B210	bushing, brass, 1/2"mpt x 3/8" fpt, hex	1
49	B119A	filter, strainer, 1/2"	1
50	H212	washer, 9/16" id x 1" od, flat, s/s	8
51	H413	washer, nylon, 9/16 id x 1-1/16 od x .031	2
52	B106	nipple, brass, 1/4" x close	2
53	B111	adapter, brass, extender, 1/4" mpt x 1/4" fpt, hex	3

ITEM NO.	PART NO.	DESCRIPTION	QTY.
54	B102	qd, brass, 1/4" f	1
55	H226	spout, drain, 45 degree	1
56	H225	valve, drain, 1-1/2"	1
57	P733	vac tank, speedster	1
58	G002	gasket, 2" inlet polyethylene, 3" OD 2.35" ID	2
59	P684	adaptor, pvc 2, fmsl x fmt	1
60	P682	pipe, pvc, 2"	1
61	H490	float, 2", ball style	1
62	P726	elbow, 2" float	1
63	G090	lid, vac tank, black, 7"	1
64	G060	gasket, vac lid, 6.5" i.d 7.5" o.d	1
65	A926	elbow, inlet assembly 2"	1
66	G083	gasket, 2" inlet	1
67	P685	inlet, 2"	2
68	H337	plate, switch, sp, 4 hole w/gauge	1
69	E512B	light, indicator, 125v (amber)	1
70	E515	switch, rocker, 2 position	4
71	H308D	gauge, pressure, 2000 PSI	1

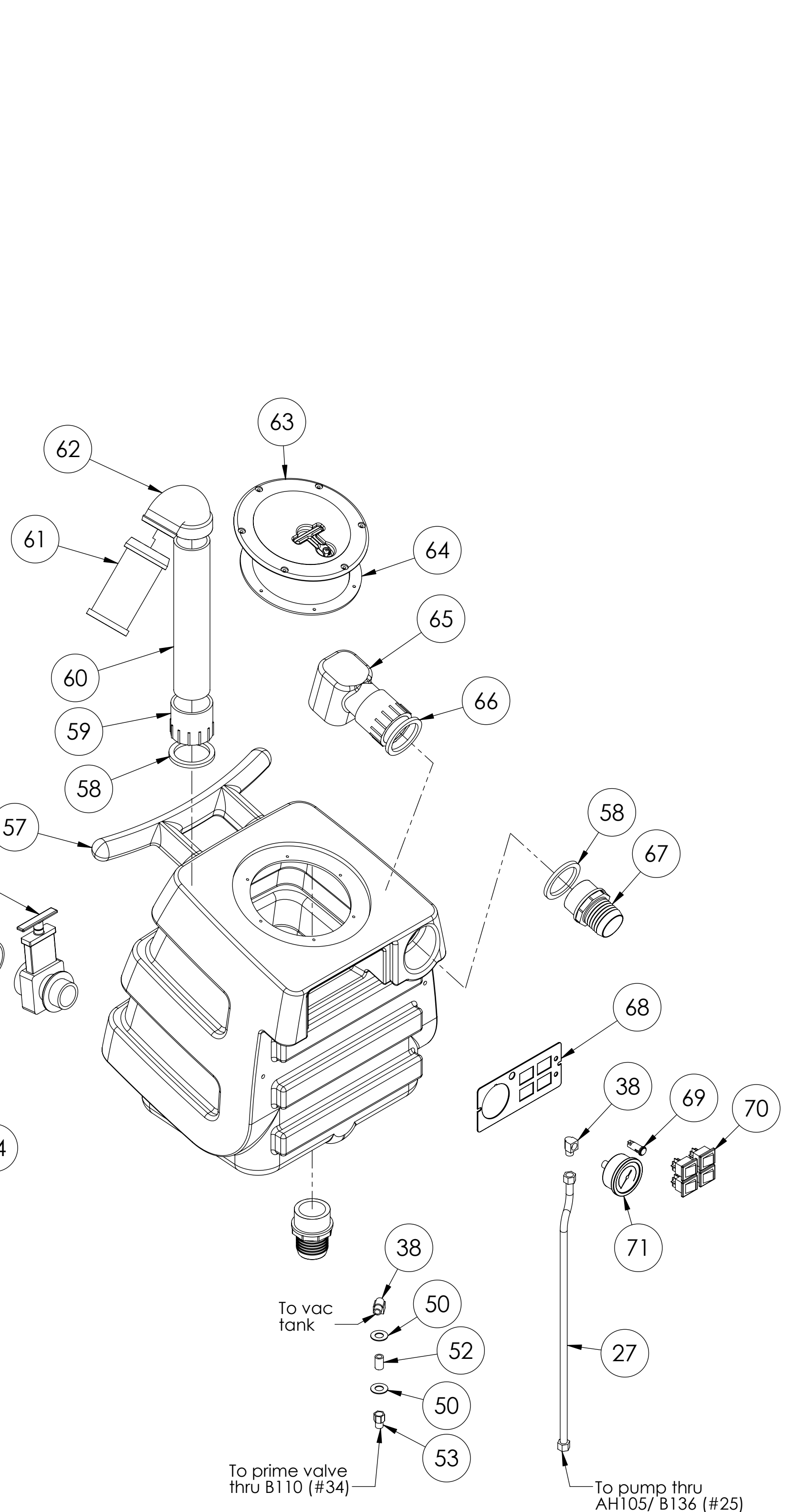
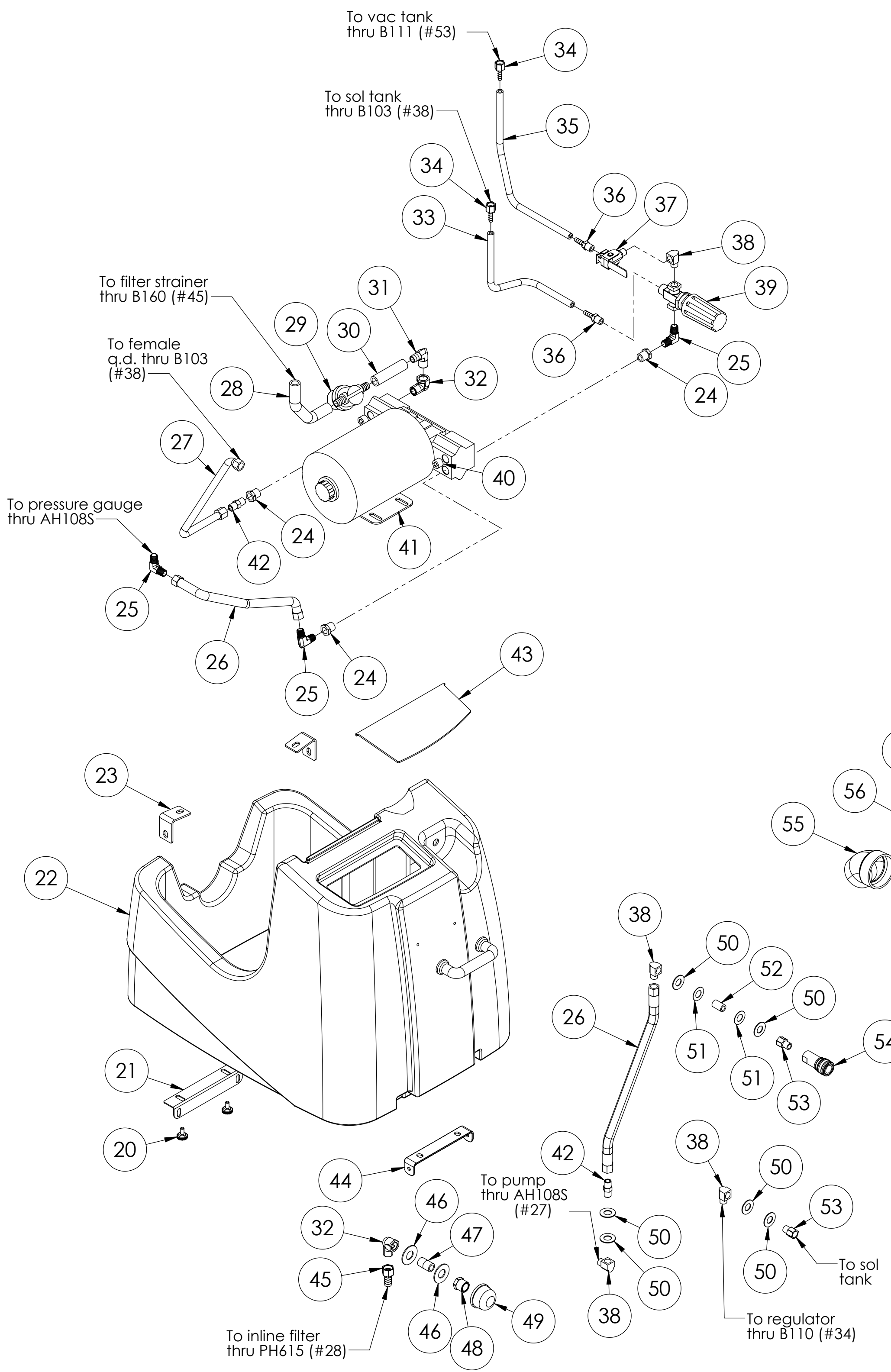
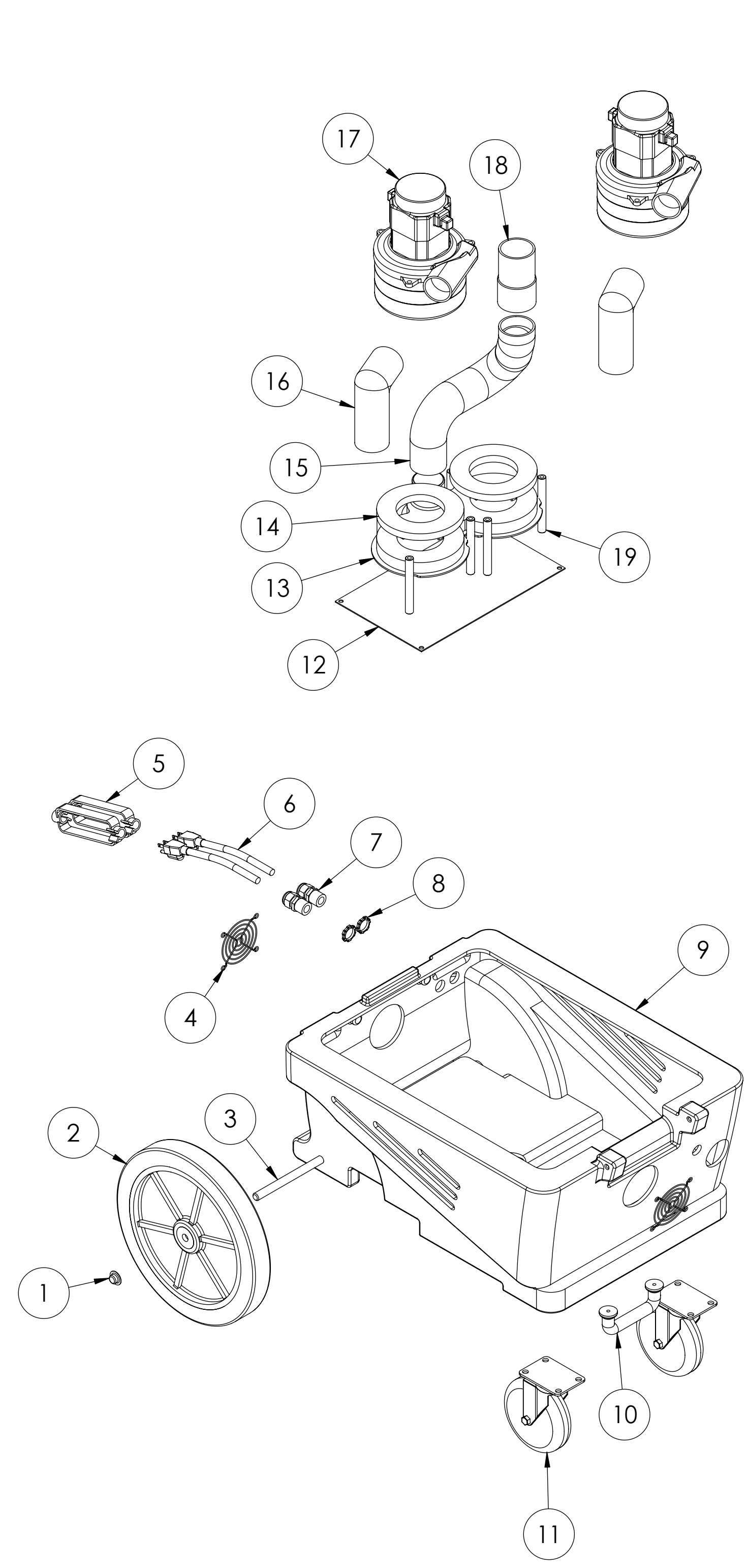
*No fastening hardware shown

Parts not shown:

PART NO.	DESCRIPTION	QTY.
E530	power cord, ext, 50', 12/3 yel	2
E564	controller, circuit light	1
G010	filter, bag, vac tank	1
G085	gasket, strip, 3/4" x 36"	2



UNLESS OTHERWISE SPECIFIED:		NAME	DATE	MYTEE PRODUCTS, INC.
DIMENSIONS ARE IN INCHES	DRAWN	V. LaBarbera	1/2007	858-679-1191
TOLERANCES:	CHECKED			
FRACTIONAL ±	ENG APPR:			
ANGULAR MATCH ±	MFG APPR:			
TWO PLACE DECIMAL ±	Q.A.			
THREE PLACE DECIMAL ±	COMMENTS:			
MATERIAL:				TITLE:
PROPERTY AND CONFIDENTIAL INFORMATION CONTAINED IN THIS DRAWING IS THE SOLE PROPERTY OF MYTEE PRODUCTS, INC. ANY REPRODUCTION IN PART OR AS A WHOLE FINISH WITHOUT THE WRITTEN PERMISSION OF MYTEE PRODUCTS, INC. IS PROHIBITED.				SPEEDSTER, 1005DX
SIZE DWG. NO.		REV		
D 1005DX		od		
SCALE: 1:4		SHEET 1 OF 2		



UNLESS OTHERWISE SPECIFIED:		NAME	DATE	MYTEE PRODUCTS, INC. 858-679-1191
DIMENSIONS ARE IN INCHES	FRACTIONAL ±	DRAWN	V. LaBarbera	
TOLERANCES:	ANGULAR MATCH ±	CHECKED		
	TWO PLACE DECIMAL ±	ENG APPR.		
	THREE PLACE DECIMAL ±	MFG APPR.		
		Q.A.		
		COMMENTS:		

TITLE:
SPEEDSTER, 1005DX

SIZE DWG. NO. REV
D 1005DX od

SCALE: 1:6 SHEET 2 OF 2

PROPRIETARY AND CONFIDENTIAL
THE INFORMATION CONTAINED IN THIS DRAWING IS THE SOLE PROPERTY OF MYTEE PRODUCTS, INC. ANY REPRODUCTION IN PART OR AS A WHOLE WITHOUT THE WRITTEN PERMISSION OF MYTEE PRODUCTS, INC. IS PROHIBITED.