

ITEM NO.	PART NO.	DESCRIPTION	QTY.
1	G131	connector, cord lock	2
2	E550	power cord, pigtail, 30', 12/3, yel	2
3	H220	fitting, strain relief, cord	2
4	H221	nut, lock, 1/2" steel	2
5	H219	cap, axle, 1/2"	2
6	H251	wheel, 12"	2
7	H254	washer, axle, cut 1/2" id	5
8	H371	axle, 1/2" x 18-1/2", sp, breeze	1
9	P731	base, speedster	1
10	H216	nut, lock, 1/4-20, nylon insert	16
11	H210	washer, 1/4" flat, s/s	20
12	H342	bolt, 1/4-20 x 1" hex head, s/s	12
13	H666	caster, 5"	2
14	H485	handle, breeze	2
15	H211	washer, 1/4" id x 1" od, flat, s/s	8
16	H768	bolt, 1/4-20 x 3/4" serrated hex flange, zinc	12
17	H206	screw, #10-32 x 5/8" hex head, zinc	4
18	H296	guard, cooling fan, wire	3
19	C317	fan, cooling, 115V	1
20	H343	screw, #10 x 5/8" hex head, zinc	8
21	H273	nut, kep, #10-32 zinc	4
22	H256	screw, #10-32 x 3/4" phil pan head, zinc	2
23	H528	bracket, heater mounting, dual	1
24	H903A	heater, aluminum cast, single w/wrap & drilled holes	2
25	AH108S	sol hose, 1/4" x 24 1/2", (OAL), f x fsw, 3000psi	1
26	B103	elbow, brass, 90 deg, 1/4" mpt x 1/4" fpt	10
27	AH156	hose, 3/8" x 6", (OAL), f x fsw, surge, 1600psi	1
28	E519	heating rod, 1000W, 115V	2
29	E574	Thermostat, 310°F ± 10°F, Manual, 1/4"	2
30	H274	screw, #6 x 3/16, phil pan head, self-tapping	10
31	E573	Thermostat, 200°, Auto, 1/4"	2
32	G059	exhaust boot, plastisol	2
33	G004	gasket, vacuum motor	2
34	C302	vac motor, 3 stage, 115V, tangential	2
35	H501	vac support, 3 stage, 4-1/16"	6
36	H217	clamp, hose, 2-1/4 DIA	3
37	PH628-20	vac hose, 2", wire reinforced	1
38	H544	cuff, 2"	1
39	H201	bolt, 1/4-20 x 1/2" hex head, zinc	8
40	H601	plate, manifold, parallel	1
41	P750	manifold, dual vac, parallel	1
42	B160	adapter, brass, 1/2" barb x 3/8" fsw, ball end	1
43	H347	clamp, hose, 5/16-29/32	8
44	PH615-28	sol hose, 1/2" kuri 100psi	1
45	B175	filter, cup, in-line	1
46	PH615-1.5	sol hose, 1/2" kuri 100psi	1
47	B172	elbow, brass, 90 deg, 1/2" barb x 3/8" mpt	1
48	B110	adapter, brass, 1/4" sw barb x 1/4" fpt, w/gasket	2
49	PH634-22	sol hose, 1/4" kuri 150psi	1
50	B109	adapter, brass, 1/4" barb x 1/4" mpt	2
51	PH634-25	sol hose, 1/4" kuri 150psi	1
52	H902	valve, prime, high pressure	1
53	C313C	regulator, 450 psi	1

ITEM NO.	PART NO.	DESCRIPTION	QTY.
54	B652	elbow, brass, 90 deg, 3/8" mpt x 1/4" mpt	3
55	B246	plug, brass, 3/8" mpt, hex	2
56	C313	pump, 450 psi, 115V	1
57	AH184	hose, 3/8" x 14-1/2" (OAL), f surge	1
58	AH105	hose, 3/8" x 17-1/2", (OAL), f x -fsw, surge, 1600psi	1
59	H922	knob, thumb screw, for bracket	2
60	H213	washer, 1/4" lock, s/s	6
61	H912	bracket, rear, fb/spy	1
62	H770	bolt, 1/4-20 x 1/2" serrated hex flange, zinc	6
63	H390A	Bracket, L 070-036	2
64	H203	bolt, 1/4-20 x 1-1/4" hex head	2
65	G052	washer, buna 1-1/8" od x 3/16" id	6
66	H215	nut, hex, 1/4-20 s/s	2
67	P732	sol tank, speedster	1
68	H212	washer, 9/16" id x 1" od, flat, s/s	8
69	H413	washer, nylon, 9/16 id x 1-1/16 od x .031	4
70	B106	nipple, brass, 1/4" x close	2
71	B111	adapter, brass, extender, 1/4" mpt x 1/4" fpt, hex	3
72	B102	qd, brass, 1/4" f	1
73	B107	nipple, brass, 1/4" m, hex	1
74	H316	bolt, 1/4-20 x 1-1/2" hex head, s/s	2
75	H378	bracket, front hinge, sp/fb	1
76	B119A	filter, strainer, 1/2"	1
77	B210	bushing, brass, 1/2" mpt x 3/8" fpt, hex	1
78	H299	washer, 11/16" id x 1-1/2" od x .075, s/s	5
79	B216	nipple, brass, 3/8" x close	1
80	B186	elbow, brass, 90 deg, 3/8" mpt x 3/8" fmpt	1
81	H490	float, 2", ball style	1
82	P726	elbow, 2" float	1
83	H297	screw, #8 x 1/2", hex head, zinc	3
84	P682	pipe, pvc, 2"	1
85	P684	adaptor, pvc 2, fmsl x fmt	1
86	G002	gasket, 2" inlet polyethylene, 3" OD 2.35" ID	1
87	H225	valve, drain, 1-1/2"	1
88	H226	spout, drain, 45 degree	1
89	P733	vac tank, speedster	1
90	A926	elbow, inlet assembly 2"	1
91	G090	lid, vac tank, black, 7"	1
92	H304	screw, #8 x 5/8 phil oval, s/s	6
93	G060	gasket, vac lid, 6.5" i.d 7.5" o.d	1
94	G083	gasket, 2" inlet	1
95	P685	inlet, 2"	2
96	E512B	light, indicator, 125v (amber)	1
97	H337	plate, switch, sp, 4 hole w/gauge	1
98	E511	light, red, 250v	2
99	E515	switch, rocker, 2 position	3
100	E516	switch, rocker, 3 position	1
101	H389	screw, #10-32 x 1/2" SHCS, alloy	1
102	H612	washer, #8 flat, s/s	3
103	H308D	gauge, pressure, 2000 PSI	1
104	H246	screw, #8-32 x 3/8" SHCS, alloy	2
105	B136	elbow, brass, 90 deg, 1/4" mpt x 1/4" mpt	1

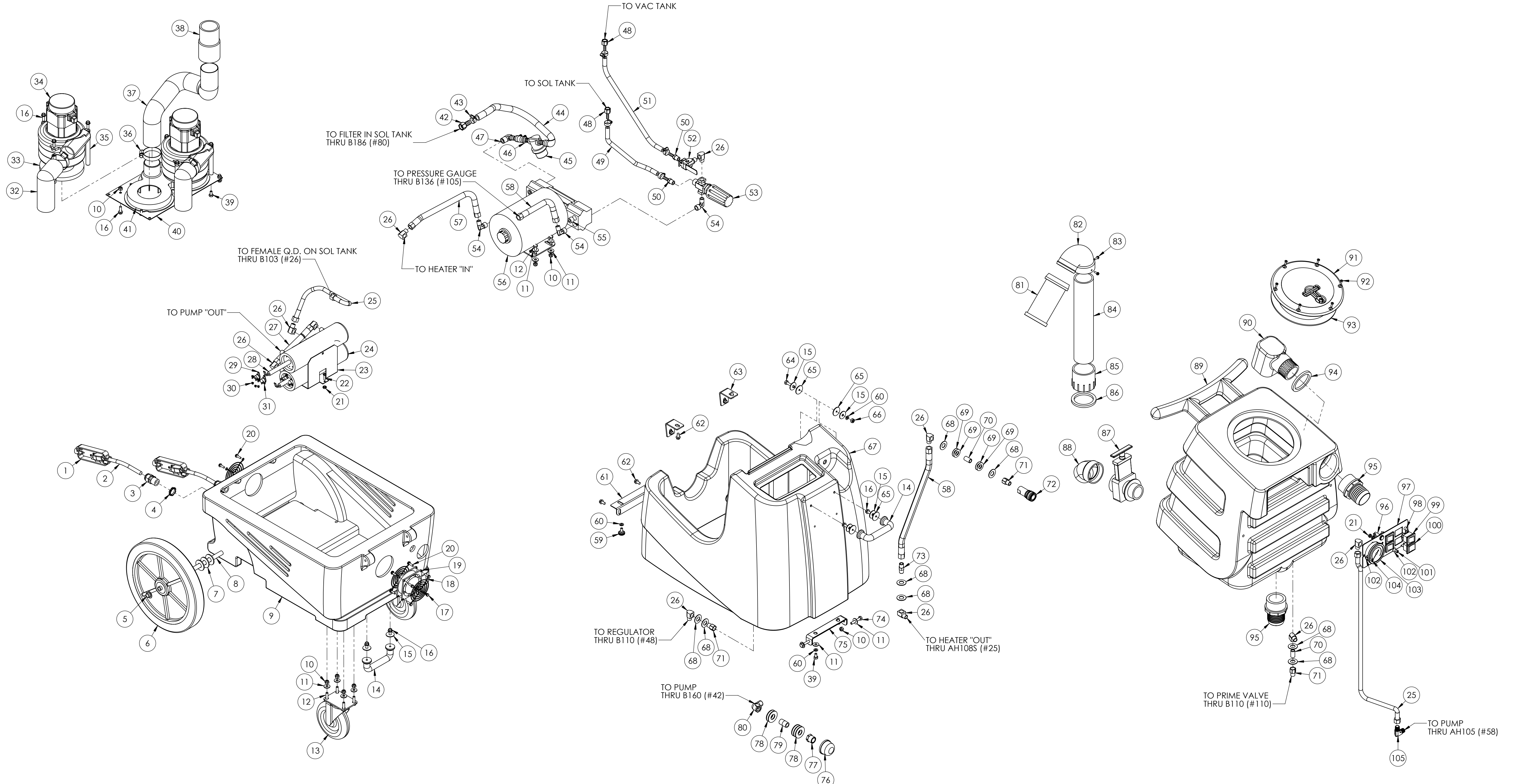
REVISIONS			
REV.	DESCRIPTION	DATE	APPROVED
OD	ORIGINAL DRAFT	6/15/2007	JFL



ITEMS NOT SHOWN:

PART NO.	DESCRIPTION	QTY.
E530	power cord, ext, 50', 12/3 yel	2
E564	controller, circuit light	1
G010	filter, bag, vac tank	1
G085	gasket, strip, 3/4" x 36" X 1/8"	2
H479	cuff, hose, 1-1/2 x 2", crushproof, gray	1

NAME	DATE	<b>MYTEE PRODUCTS, INC.</b> <small>858-679-1191</small>
DRAWN V. LaBarbera	6/2007	
CHECKED		TITLE:
		<b>1003DX</b>
<small>PROPRIETARY AND CONFIDENTIAL          THE INFORMATION CONTAINED IN THIS DRAWING IS THE SOLE PROPERTY OF MYTEE PRODUCTS, INC. ANY REPRODUCTION IN PART OR AS A WHOLE WITHOUT THE WRITTEN PERMISSION OF MYTEE PRODUCTS, INC. IS PROHIBITED.</small>		SIZE DWG. NO. REV <b>C 1003DX OD</b>
SCALE: 1:8		DO NOT SCALE DRAWING SHEET 1 OF 2



NAME	DATE	MYTEE PRODUCTS, INC. 850-679-1191
V. LaBarbera	4/2007	
DRAWN		TITLE:
CHECKED		1003DX
PROPRIETARY AND CONFIDENTIAL THE INFORMATION CONTAINED IN THIS DRAWING IS THE SOLE PROPERTY OF MYTEE PRODUCTS, INC. ANY REPRODUCTION IN PART OR AS A WHOLE WITHOUT THE WRITTEN PERMISSION OF MYTEE PRODUCTS, INC. IS PROHIBITED.		SIZE DWG. NO. REV D 1003DX od
SCALE: 1:6		DO NOT SCALE DRAWING SHEET 2 OF 2