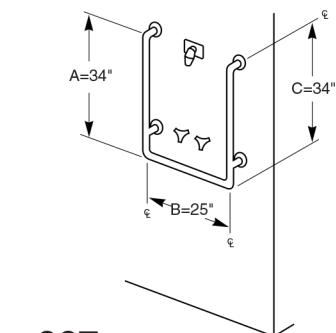
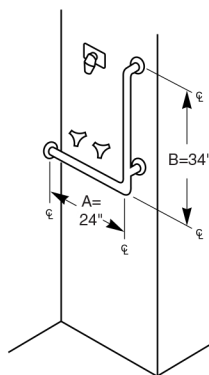


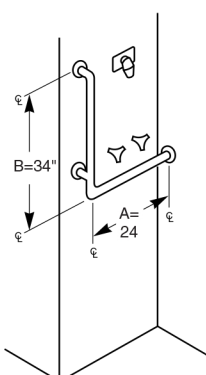
Typical Shower Applications:



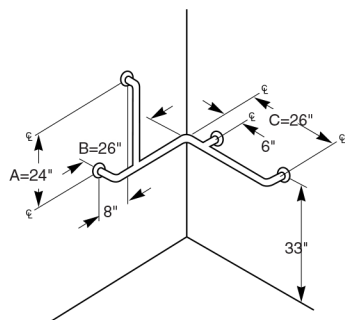
□ **007**



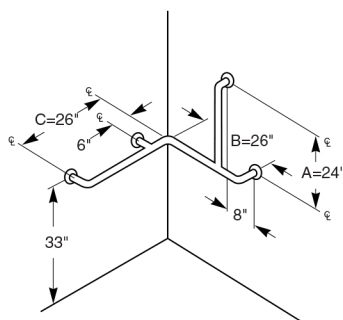
□ **032**
(RH)



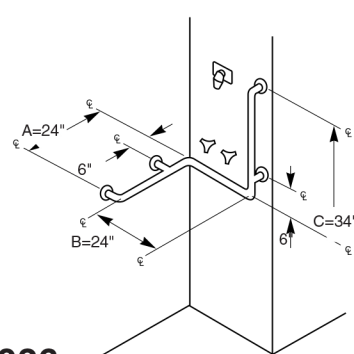
□ **033**
Opposite **032** (LH)



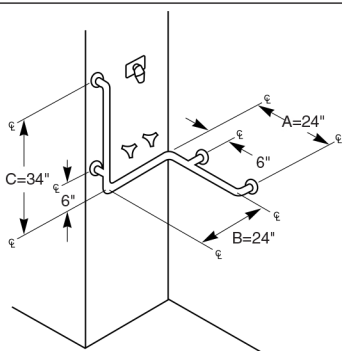
□ **034**
(LH)



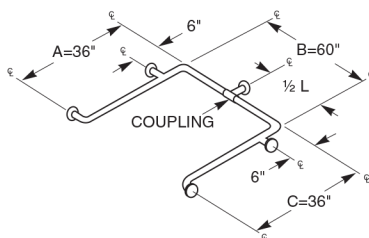
□ **035**
Opposite **034** (RH)



□ **036**
(RH)



□ **037**
Opposite **036** (LH)



□ **060**
This configuration ships in two pieces which are joined at the coupling. This configuration can ship via UPS.

ADA Compliant

- ☑ Consult local and national accessibility codes for proper installation guidelines.
- ☑ Conformity and compliance to local and national codes is the responsibility of the installer.

NOTE: When Grab Bar dimensions are modified, a support will be added to all sections longer than 54".