

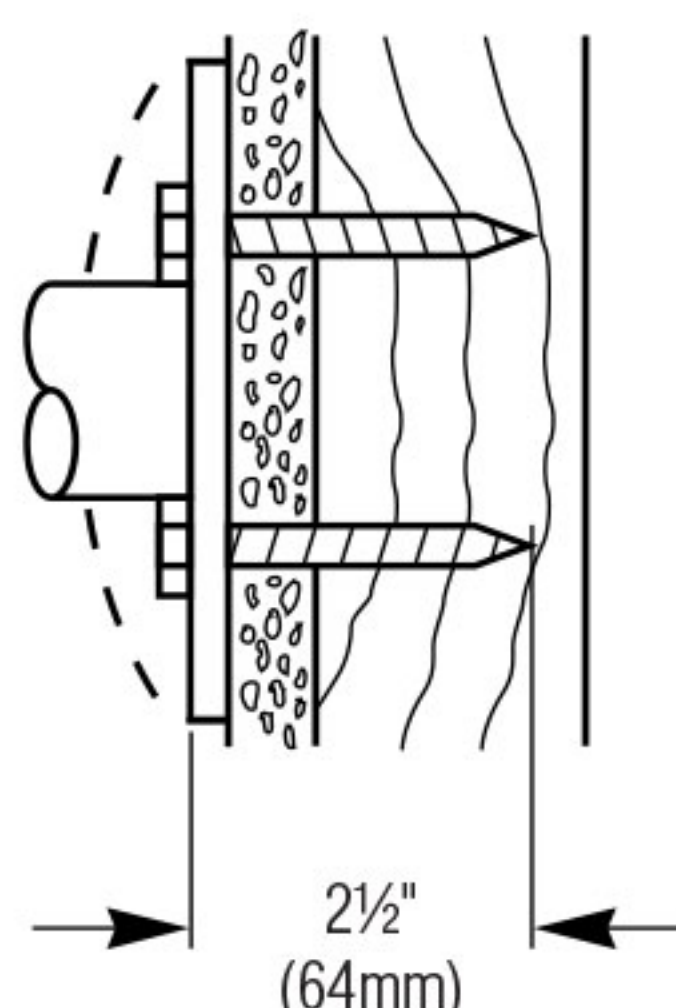
## Concealed Mounting Kits

☒ Order one mounting kit per grab bar flange.

### Stud walls with wood supports

#### ☐ 899-010

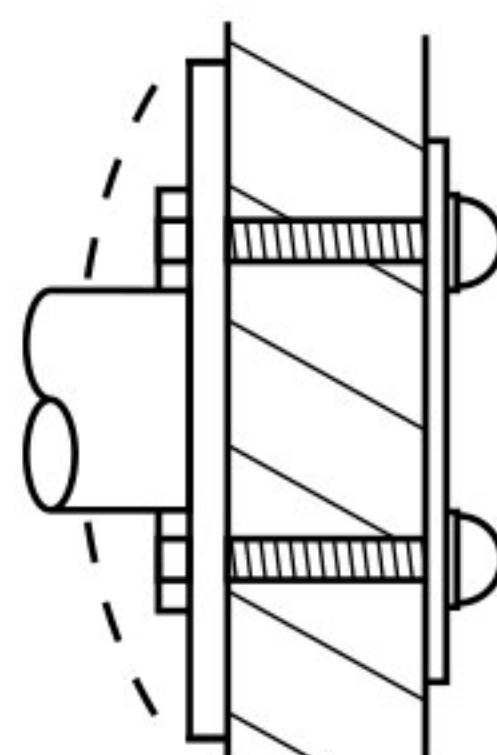
MATERIAL INCLUDED  
2 - 1/4 x 2 1/2" PLATED  
STEEL HEX HEAD LAG BOLTS



### Partition walls

#### ☐ 899-011

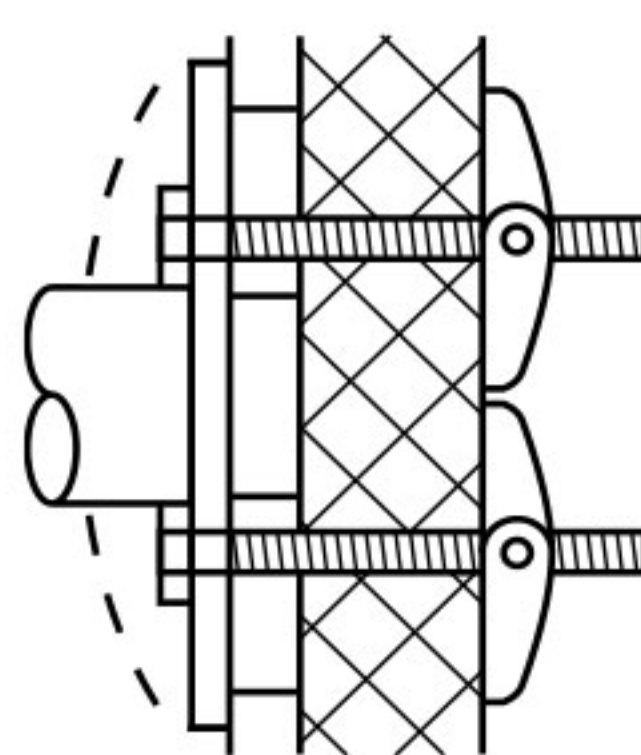
MATERIAL INCLUDED  
A) 2 - 1/4-20 x 1 1/2"  
PLATED STEEL HEX HEAD  
MACHINE SCREWS  
B) 2 CAP NUTS  
C) 1 BACKING PLATE



### Panel walls

#### ☐ 899-012

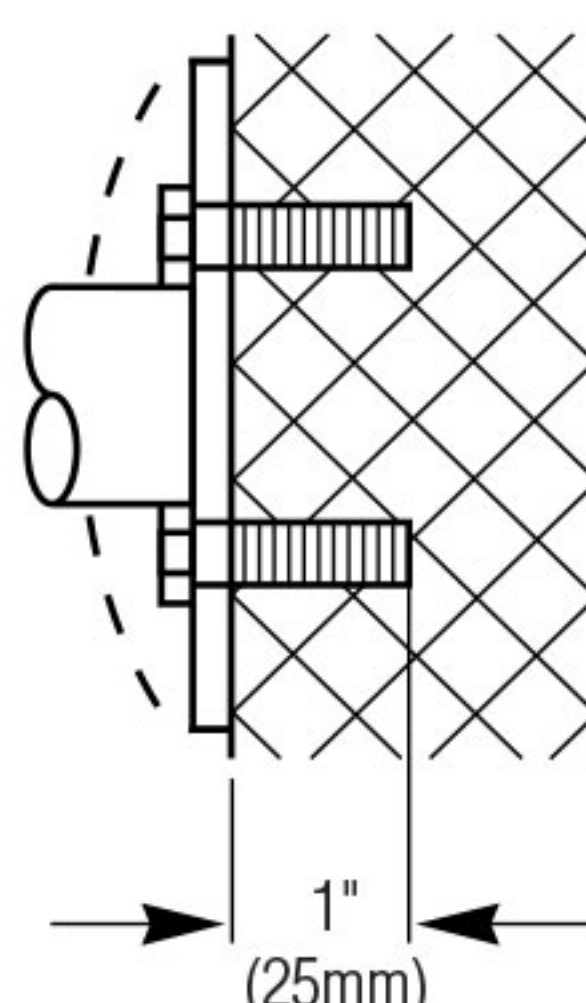
MATERIAL INCLUDED  
A) 2 - 1/4-20 x 3"  
PLATED STEEL HEX  
HEAD MACHINE  
SCREWS  
B) 2 TOGGLE NUTS



### Masonry walls

#### ☐ 899-013

MATERIAL INCLUDED  
A) 2 - 1/4-20 x 1"  
PLATED STEEL HEX HEAD  
MACHINE SCREWS  
B) 2 - 1/4-20 LEAD ANCHORS

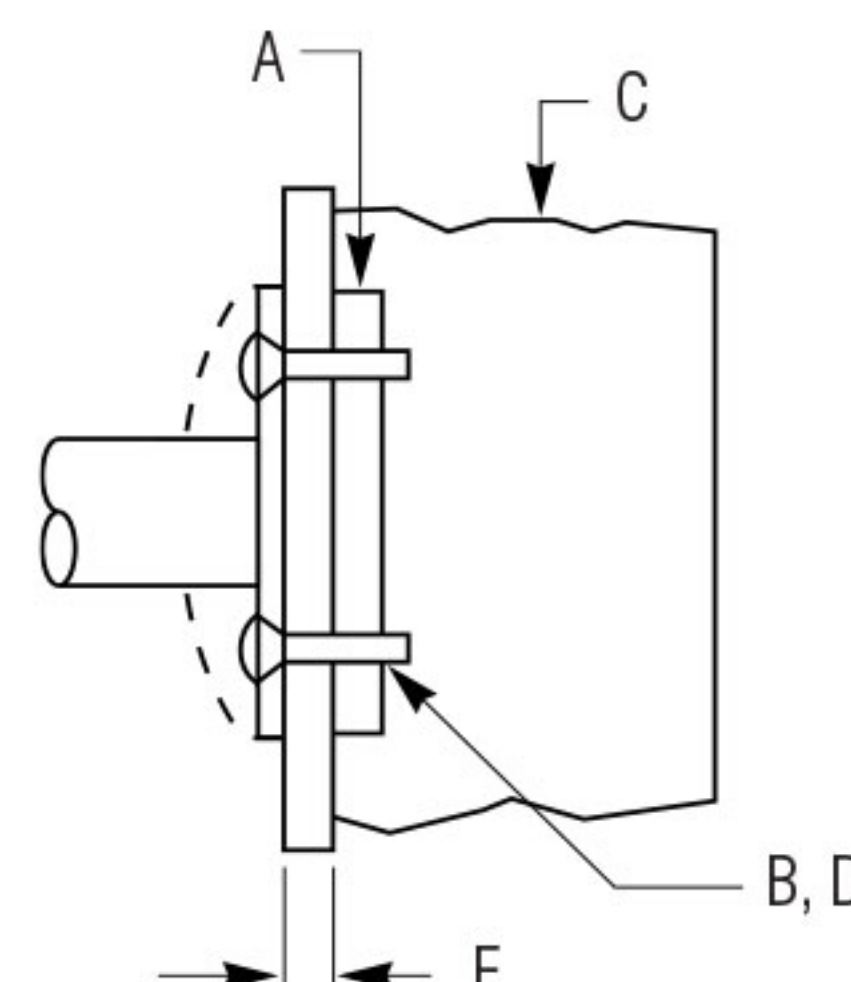


## Metal Stud Wall Mounting Kits

#### ☐ 899-014

(CONCEALED OR EXPOSED)  
MATERIAL REQUIRED  
A) IN-WALL ANCHOR PLATE  
899-015 (NOT INCLUDED).  
SPECIFY AND ORDER  
SEPARATELY - SEE ANCHOR  
PLATES IN NEXT COLUMN.

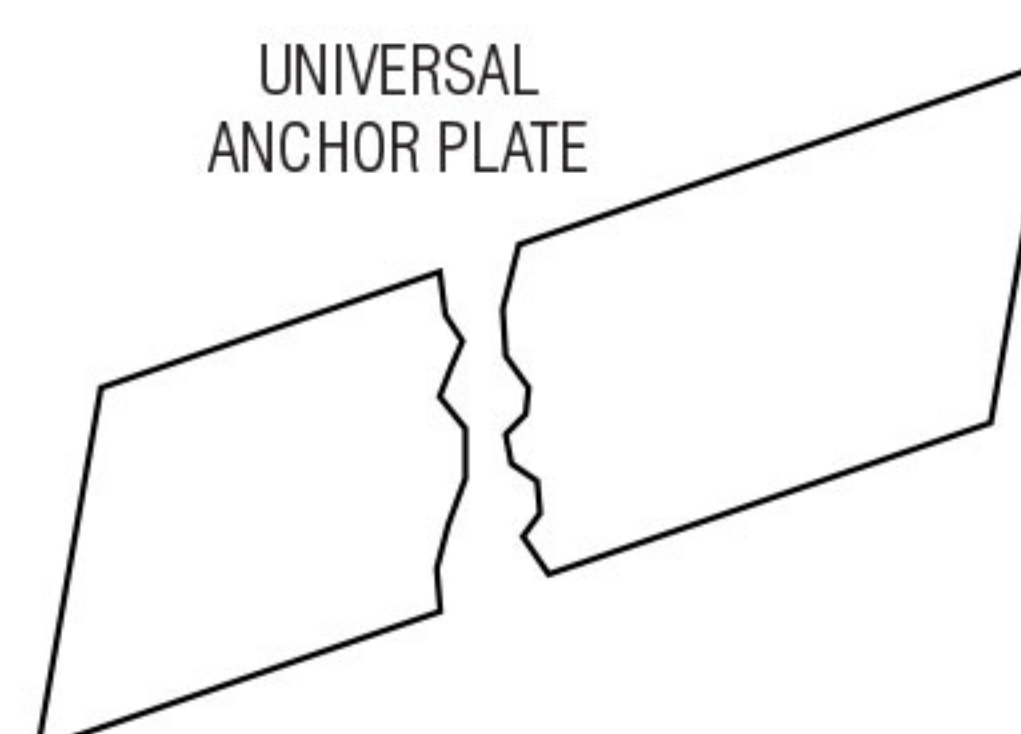
- B) #10 sheet metal screws  
(furnished by others)  
C) METAL STUD  
D) 2 - 1/4-20 x 1 1/4"  
FLAT HEAD machine SCREWS.\*  
E) WALL DIMENSIONS (TO BE FURNISHED  
IF OVER 3/4").  
\* INCLUDED WITH MOUNTING KIT 899-014.



### In-Wall Anchor Plates

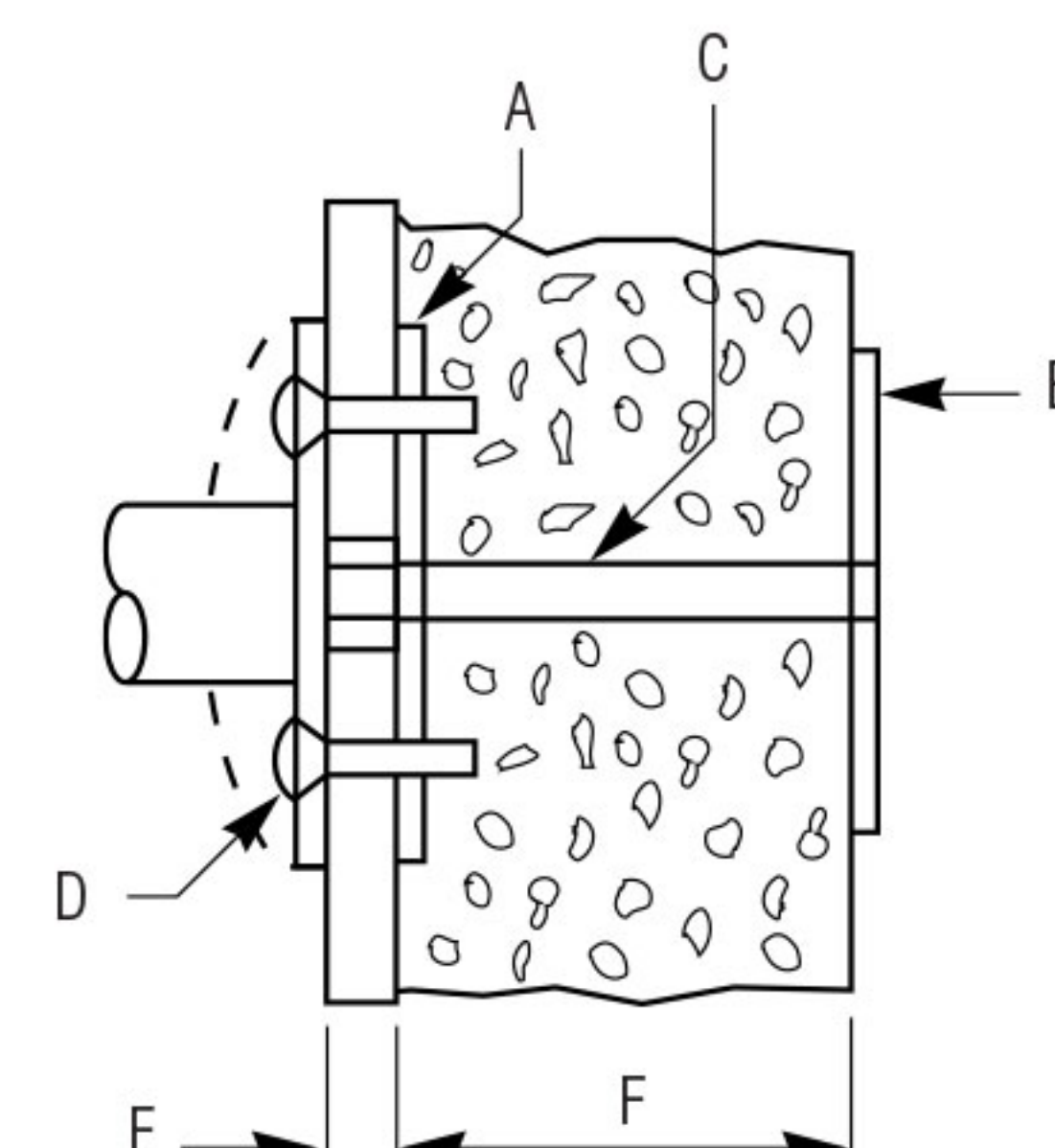
#### ☐ 899-015

x LENGTH (TO 96")  
MATERIAL  
4" x 1/8" COLD ROLLED STEEL -  
LENGTH AS SPECIFIED TO 96"  
NOTE: SEPARATELY ORDER  
899-014 MOUNTING KITS  
AS REQUIRED.



INSTALLATION:  
FASTEN TO STUDS BEFORE WALL APPLIED.  
RECESS AS REQUIRED FOR FLUSH FINISH WALL APPLICATION.  
TO ATTACH GRAB BAR, DRILL #2 (.221 DIAMETER)  
HOLES THRU WALLBOARD AND ANCHOR PLATE.  
ATTACH WITH 1/4-20 x 1 1/4" PLATED PHILLIPS  
OVAL HEAD ROLLOCK TAPPING SCREWS.

## Block Wall Mounting Kits

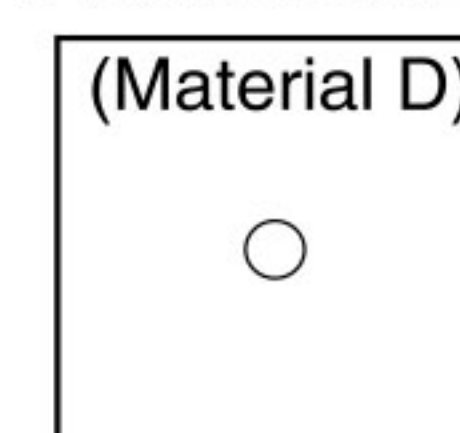
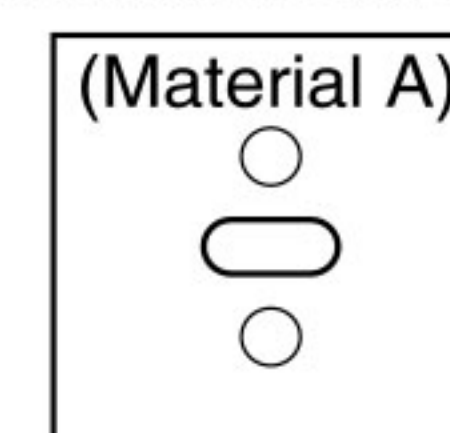


#### ☐ 899-016

(CONCEALED OR EXPOSED)

FRONT ANCHOR PLATE

BACK ANCHOR PLATE



MATERIAL REQUIRED  
A) FRONT ANCHOR PLATE 3" x 3" x 1/8" COLD ROLLED  
STEEL - CENTER SLOT PUNCHED AND 2 FASTENER  
HOLES PRE-PUNCHED.\*  
B) 2 - 1/4-20 x 1 1/4" PLATED PHILLIPS FLAT HEAD SELF  
TAPPING SCREWS.\*  
C) 1 - 3/8-16 STEEL ZINC-PLATED TIE ROD WITH NUT.\*  
D) BACK ANCHOR PLATE 3" x 3" x 3/16" COLD ROLLED  
STEEL - TAPPED FOR AND INCLUDING 3/8-16 STUD  
AND NUT.\*  
E) FINISHED WALL THICKNESS (TO BE FURNISHED IF  
OVER 3/4").  
F) MASONRY WALL (THICKNESS TO BE FURNISHED).

\* INCLUDED WITH MOUNTING KIT 899-016.

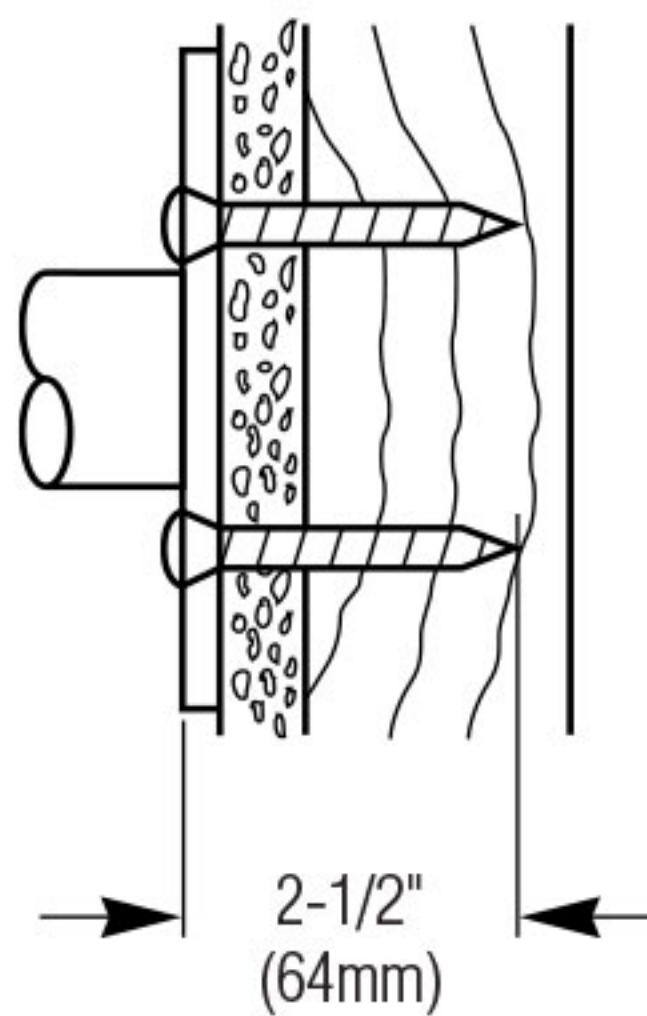


### Exposed Mounting Kits

#### Stud walls with wood supports

##### □ 899-020

MATERIAL INCLUDED  
2 – #14 x 2½" STAINLESS  
STEEL PHILLIPS OVAL HEAD  
SHEET METAL SCREWS



#### Stud walls

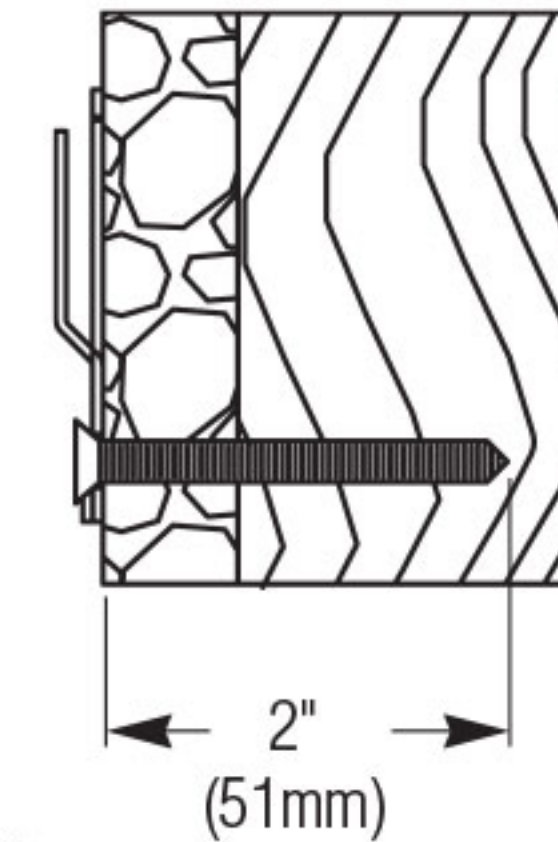
##### □ 899-026

(CONCEALED OR EXPOSED)

MATERIAL INCLUDED  
4 – #10 x 2"  
ZINC PLATED  
FLAT HEAD  
WOOD SCREW

NOTE: FOR MIRROR MOUNTING  
ONLY.

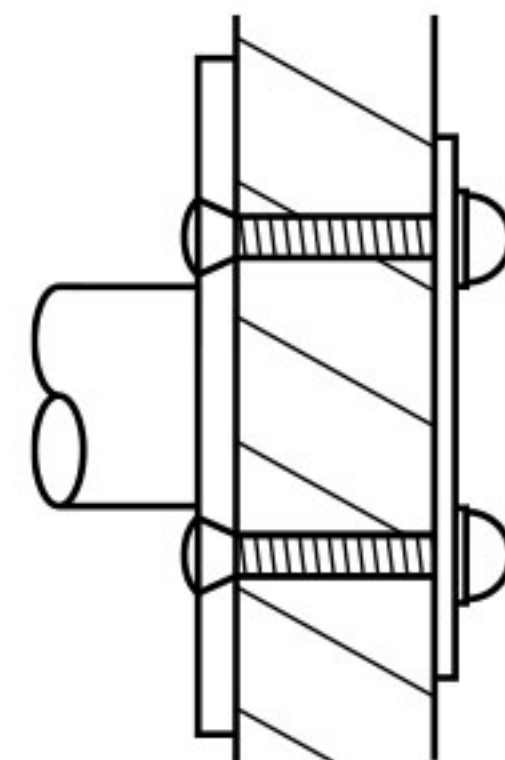
(1) PER H-HANGER



#### Partition walls

##### □ 899-021

MATERIAL INCLUDED  
A) 2 – ¼-20 x 1⅜"  
STAINLESS STEEL  
PHILLIPS OVAL HEAD  
MACHINE SCREWS  
B) 2 CAP NUTS  
C) 1 BACKING PLATE

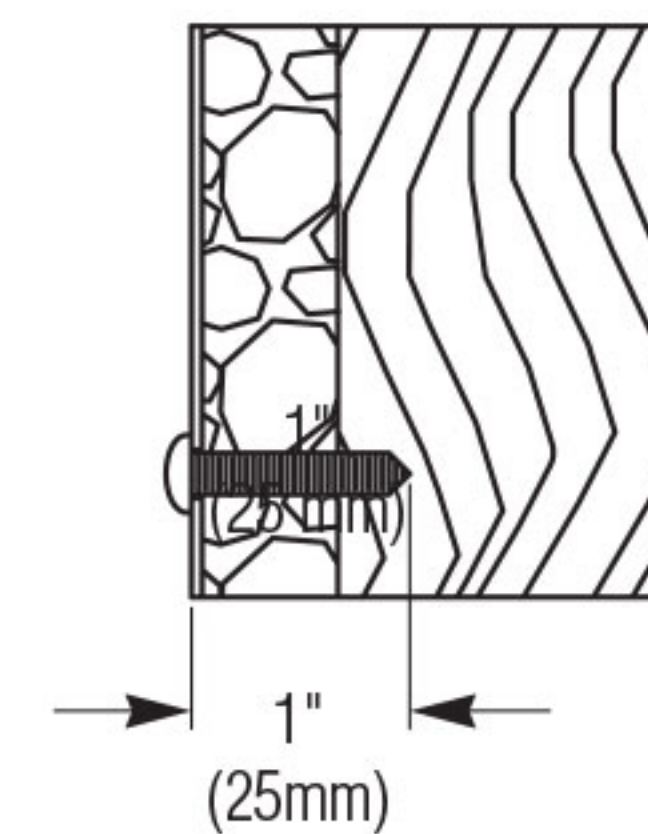


#### Stud walls

##### □ 899-027

(CONCEALED OR EXPOSED)

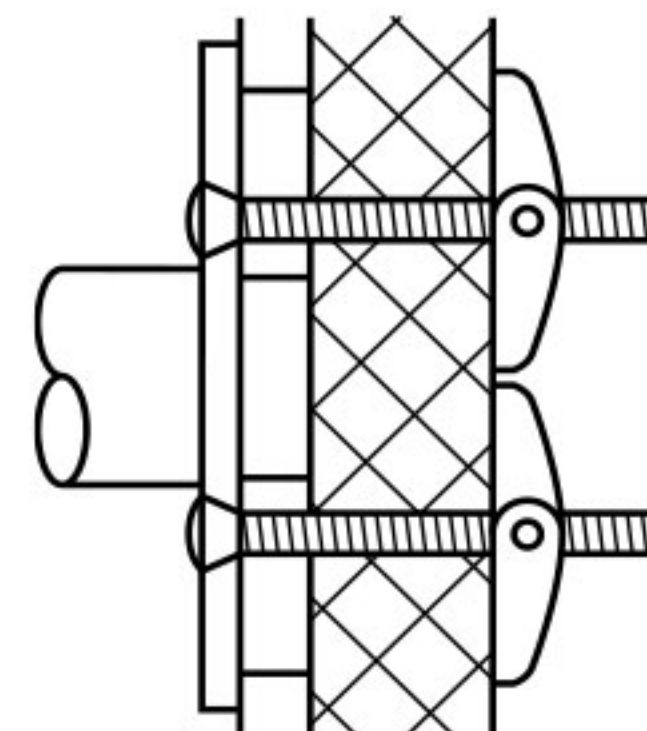
MATERIAL INCLUDED  
4 – #10 x 1"  
ZINC PLATED  
PAN HEAD  
WOOD SCREW



#### Panel walls

##### □ 899-022

MATERIAL INCLUDED  
A) 2 – ¼-20 x 3"  
STAINLESS STEEL  
PHILLIPS OVAL HEAD  
MACHINE SCREWS  
B) 2 TOGGLE NUTS

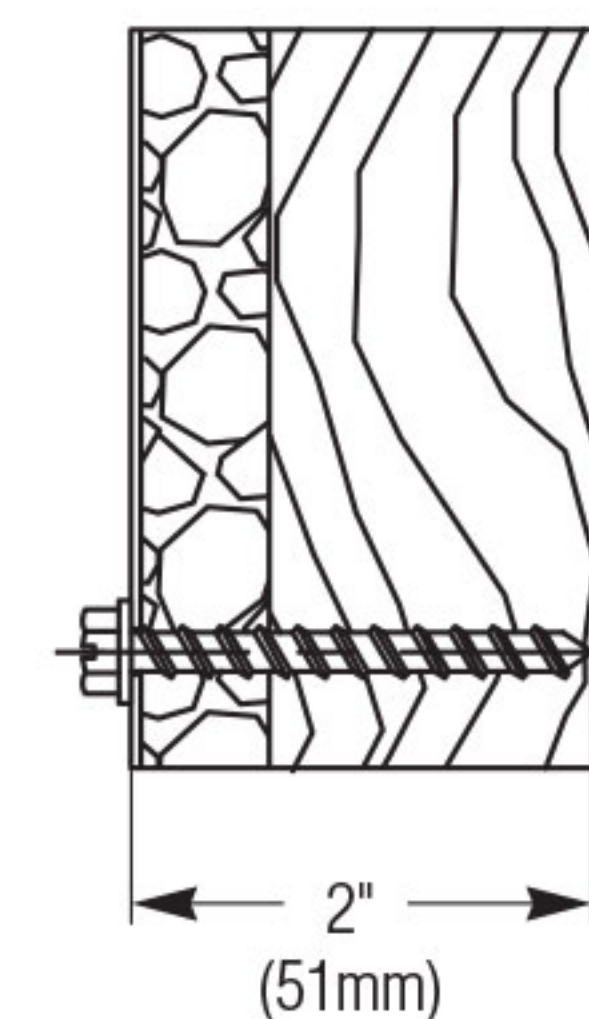


#### Stud walls

##### □ 899-028

(EXPOSED MOUNTING)

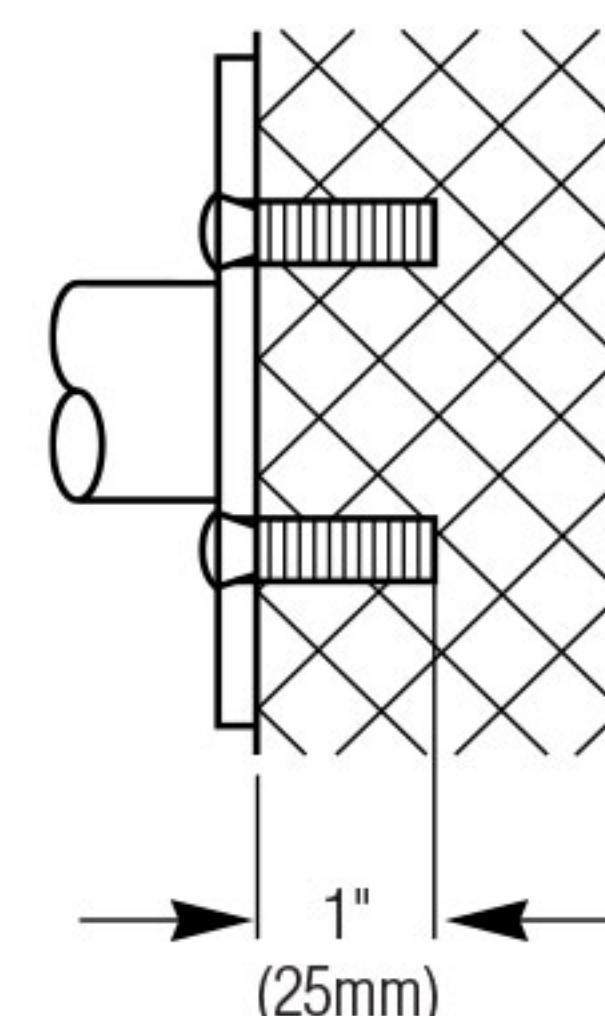
7 – SLOTTED HEX WASHER HEAD  
¼" x 2" LONG  
18-8 STAINLESS STEEL  
SHEET METAL



#### Masonry walls

##### □ 899-023

MATERIAL INCLUDED  
A) 2 – ¼-20 x 1"  
STAINLESS STEEL  
PHILLIPS OVAL HEAD  
MACHINE SCREWS  
B) 2 – ¼-20 LEAD  
ANCHORS



#### Stud walls

##### □ 899-029

(EXPOSED MOUNTING)

10 – SLOTTED HEX WASHER HEAD  
¼" x 2" LONG  
18-8 STAINLESS STEEL  
SHEET METAL

