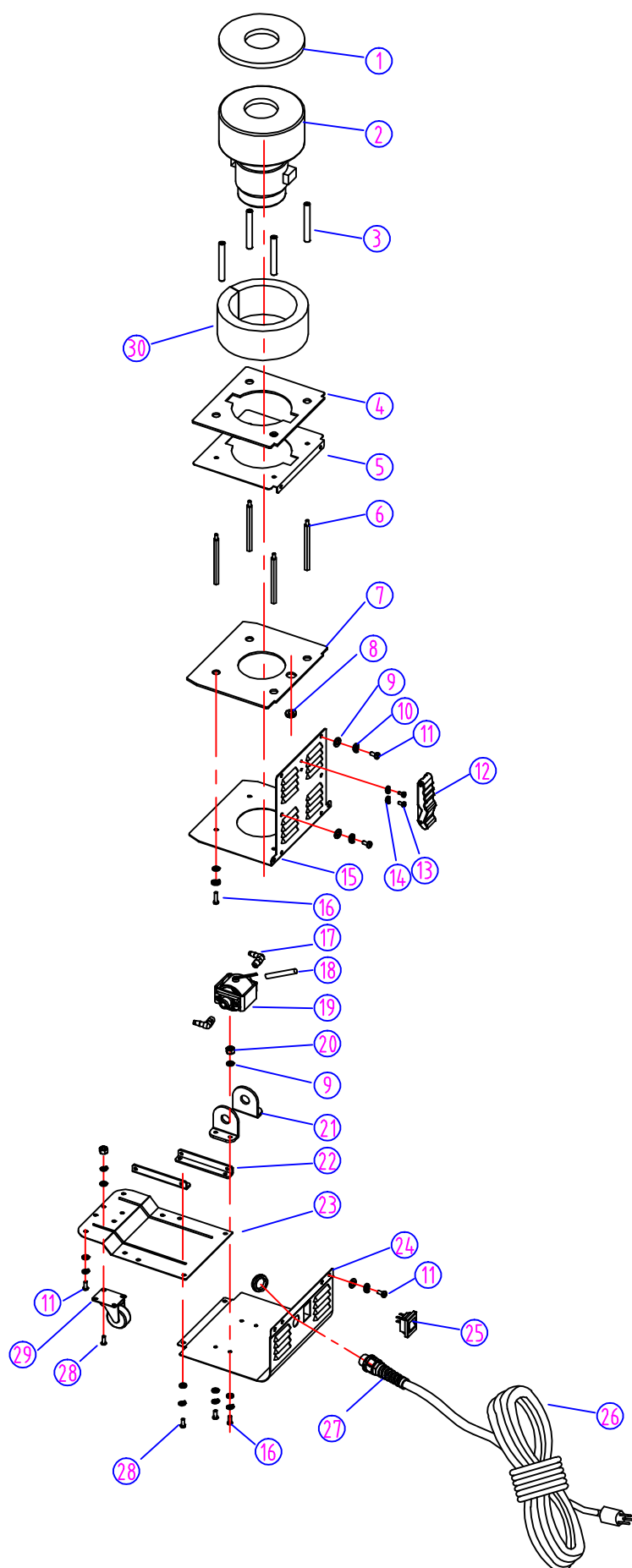


## PARTS LIST



## VACUUM & PUMP ASSEMBLIES - WOLF 130 - LIST PRICE (U.S.A.)

DIA NO.	PART NUMBER	DESCRIPTION	NO. REQ'D		LIST \$ (ea)
1	VV68112	GASKET, VAC MOTOR, 5.75"	1		\$5.35
2	ZD49000A	VACUUM MOTOR, 110V	1		\$226.57
3	VV68116	SPACER, VAC MOTOR	4		\$2.68
4	VV68110	GASKET, VAC MOTOR	1		\$5.35
5	VV68109	MOUNTING PLATE, VAC MOTOR	1		\$7.49
6	VV68117	SPACER, VAC PLATFORM	4		\$2.68
7	VV68120	GASKET, BAFFLE	1		\$6.42
8	YQ60504	RING	1		\$1.20
9	VV13662	WASHER, PLAIN, M5	32		\$1.20
10	VV13601	WASHER, LOCK, M5	28		\$1.20
11	VF14214	SCREW, PH, M5 X 8	12		\$1.20
12	VF83109	CATCH	1		\$11.24
13	VF13665	SCREW, PH, M4 X 6	2		\$1.20
14	VV20291	WASHER, LOCK, M4	2		\$1.20
15	VV68107	BAFFLE & REAR PANEL	1		\$18.59
16	VV20501	SCREW, PH, M5 X 14	8		\$1.20
17	RD60128	BARB, HOSE	2		\$9.90
18	RD50258	DIODE ASSEMBLY	1		\$6.29
19	RD50264	PUMP, 110V	1		\$120.40
20	VV13633	NUT, M5	8		\$1.20
21	VV68126	BRACKET, PUMP MOUNTING	2		\$6.69
22	VV68108-2	CONNECTOR	2		\$3.61
23	VV68108-1	BOTTOM MOUNT PLATE	1		\$22.87
24	VV68106	MOUNTING PLATE, SWITCH ASSEMBLY	1		\$18.59
25	VA91346	SWITCH ASSEMBLY	1		\$10.43
26	VV30183	POWER CORD	1		\$26.48
27	VF99008B	CORD STRAIN RELIEF	1		\$5.35
28	VV20509	SCREW, PH, M5 X 10	8		\$1.20
29	VV68123	CASTER, 1.5"	1		\$6.42
30	VV68183	SPONGE	1		\$4.28

\*PRICING IS FOR U.S.A. ONLY. CANADIAN CUSTOMERS PLEASE CALL 800-668-8400...OPTION #2