

Instruction Sheet

Laptop Transport Stand #350305

Column Assembly

Insert column into center of base. Strike the center of plate with a rubber mallet to ensure a tight fit.

Foot Pedal Assembly

Place the spring on shaft of plunger and insert into the center hole of column adapter. Fasten tightly with shoulder bolts and washers through foot ring.

Tray Assembly

Attach the laptop tray to the plate at the top of the column using (4) flat washers and (4) lock nuts. Firmly tighten all nuts.

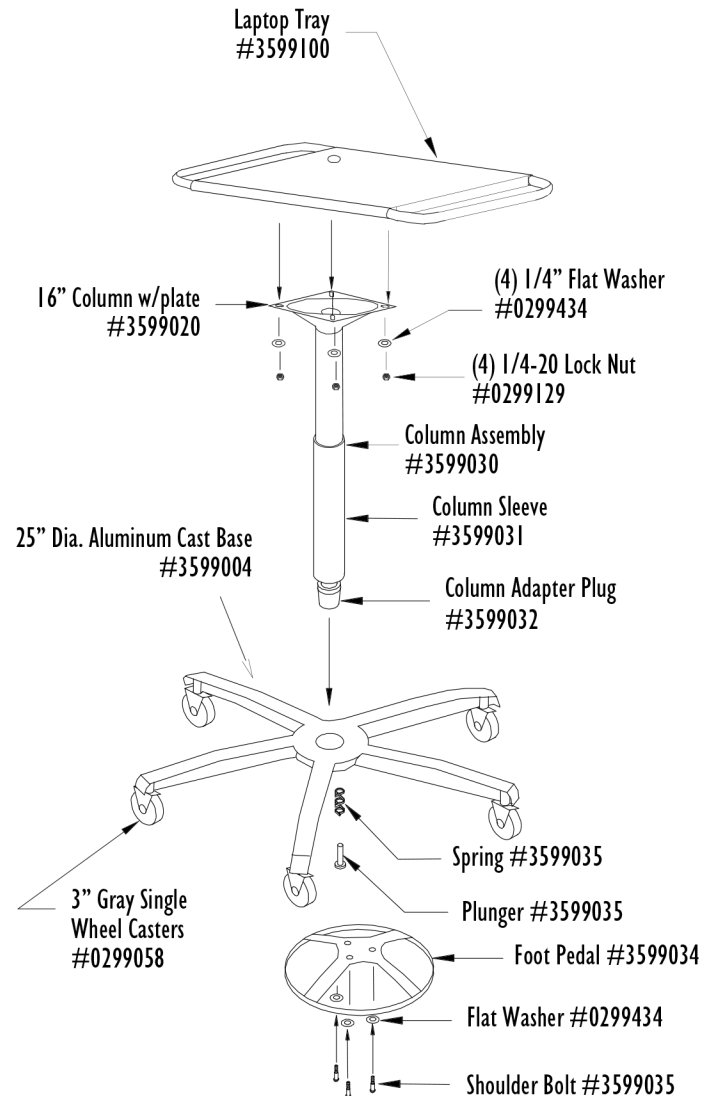
Height Adjustment

To raise height of laptop stand, apply downward pressure on the foot pedal. To lower, apply downward pressure on the foot pedal and push down equally on handles located on sides of the tray.

Securing Laptop Computer

Wipe the top of the laptop tray and bottom surface of laptop computer with isopropyl alcohol. Peel liner paper from one side on the dual lock squares provided. Place the dual lock on the bottom of the laptop on each corner. As a test, place laptop on tray and mark the location where the laptop will be affixed. Peel liner paper from each of the dual lock squares and place laptop on top of tray at the desired location. Press down firmly and allow a half-hour for the dual lock to set.

(4) Dual Lock
#0299603X



Stand Accessories



Transport Basket
#350002



Wire Basket
#350005

MANUFACTURERS OF **IBEAM** PRODUCTS
OMNIMED INC.®

UnoClean.com
1-888-226-2724