

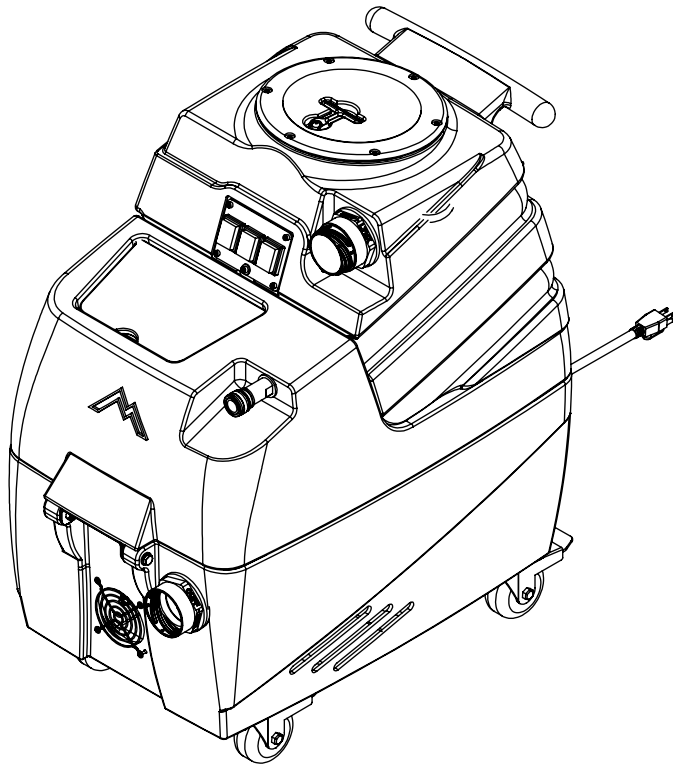
	8	7	6	
	ITEM NO.	PART NO.	DESCRIPTION	QTY.
	1	H273	nut, kep, #10-32 zinc	8
	2	H230	screw, 10-32 x 1/2", phil pan head, s/s	2
	3	H528	bracket, heater mounting, dual	1
F	4	E571	heating rod, 600W, 115V	2
	5	H274	screw, 6 x 3/16, phil pan head, self-tapping	10
	6	E574	Thermostat, 310°F ± 10°F, Manual, 1/4"	2
	7	E573	Thermostat, 200°, Auto, 1/4"	2
	8	H903A	heater, aluminum cast, single	2
	9	B207	elbow, brass, 90 deg, 1/4" fpt x 1/4" fpt	1
	10	B260A	quick disconnect, 1/4" mqd x mpt, open-spray	1
	11	B259A	qd, brass, 1/4" fqd x fpt	1
	12	B103	elbow, 90 deg street, 1/4"mpt x 1/4" fpt	5
	13	B142A	coupling, brass, 1/4" fpt x 1/4" fpt	1
E	14	B148	valve, check, 1/4"mpt X 1/4"mpt, 1psi, piston	1
	15	B113	tee, 1/4" fpt x 1/4" fpt x 1/4" fpt	1
	16	AH120	sol hose, 1/4" X 24.5", 1/4 MSW X 1/4 FPT	1
	17	B541	valve, relief, 250 psi	1
	18	B109	barb, 1/4" barb x 1/4" mpt	2
	19	B170	ferrule, 1/4" brass	2
	20	PH634-26	sol hose, 1/4", silicone braided, clear	1
	21	B110	adapter, brass, 1/4" sw barb x 1/4" fpt, w/gasket	1
	22	AH184	sol hose, 1/4" x 14.5" OAL, 1/4" msw x 1/4" fpt	1
	23	B212	elbow, 90 deg, 3/8"mpt x 1/4"fpt	2
	24	C305	pump, 120 psi, 115V	1
D	25	H222	screw, 10-32 x 1-1/4" phil pan head, s/s	4
	26	H210	washer, 1/4" flat, s/s	27
	27	H347	clamp, hose, 5/16-29/32	2
	28	PH715K-29	sol hose, 3/8", polywire reinforced	1
	29	B160	adapter, brass, 1/2" barb x 3/8" fsw, ball end	1
	30	E531	power cord, end, 25', 12/3 black	1
	31	H220	fitting, strain relief, cord	1
	32	H221	nut, lock, 1/2" steel, electrical	1
	33	P791	base, spyder	1
	34	H296	guard, cooling fan, wire	2
	35	H304	screw, 8 x 5/8", phil oval, s/s	14
C	36	H194	coupler, 2" dia x 3" length, s/s	1
	37	H124V	CUFF-LYNX, 2" female cuff X 2" male thread starter cuff	1
	38	H020	nut, lock, 2", steel	1
	39	H216	nut, lock, 1/4-20, nylon insert, s/s	18
	40	H342	bolt, 1/4-20 x 1" hex head, s/s	16
	41	H667	caster, 3", Black Hub, Gray Tread	4
	42	P792	sol tank, spyder	1
	43	H215	nut, hex, 1/4-20 s/s	1
	44	H213	washer, 1/4" lock, s/s	5
	45	H211	washer, 1/4" id x 1" od, flat, s/s	2
B	46	G052	washer, buna 1-1/8" od x 3/16" id	2
	47	H203	bolt, 1/4-20 x 1-1/4" hex head, s/s	1
	48	P965	cover, sol tank, spyder	1
	49	H316	bolt, 1/4-20 x 1-1/2" hex head, s/s	2
	50	H379	bracket, front, small	1
	51	H201	bolt, 1/4-20 x 1/2" hex head, s/s	2
	52	B119	filter, strainer, 1/4"	1
	53	B107	nipple, hex, 1/4"mpt x 1/4"mpt	3
	54	H212	flat washer, 9/16"ID x 1 1/16"OD, AN960-C916	7
	55	B105	bushing, brass, 3/8"mpt x 1/4"	1
	56	B102	quick disconnect, 1/4" fqd x 1/4" fpt	1
	57	AH106	sol hose, 1/4" x 10", 1/4" msw x 1/4" fpt	1
A	58	H770	bolt, 1/4-20 x 1/2" serrated hex flange, zinc	8
	59	H912	bracket, rear, fb/spy	1
	60	P793	vac tank, spyder	1
	61	H135D	Cuff-Lynx, 2" male cuff x 2" mpt, vinyl	1
	62	H314	nut, lock, 1-1/2", steel	1

	5	4	3	2	1
	ITEM NO.	PART NO.	DESCRIPTION	QTY.	
	63	P520	adapter, 1.5" mpt pvc	1	
	64	PH633-4	pipe, pvc, 1-1/2"	1	
	65	P503	adapter, 1.5" pvc, 45 deg, fslip	2	
	66	PH633-2.5	pipe, pvc, 1-1/2"	1	
	67	PH633-.25	pipe, pvc, 1-1/2"	1	
	68	G097	filter, screen mesh, 1.90" dia	1	
	69	G003	filter, foam, 2", vac stack, 1/2"	1	
	70	G090	lid, vac tank, clear, 7"	1	
	71	G091	gasket, 7", vac lid	1	
	72	A926	elbow, inlet assembly 2"	1	
	73	H225	valve, drain, 1-1/2"	1	
	74	H390A	bracket, "L", 2" x 2"	2	
	75	PH628	vac hose, 2', black, wire reinforced	1	
	76	H217	clamp, hose, 2-1/4 dia	2	
	77	H343	screw, 10 x 5/8" hex head, zinc	1	
	78	C302LA	vac motor, 3 stage, low amp	1	
	79	H096	bolt, hex, 1/4-20 x 4", zinc Finish	3	
	80	H503	vac support, 3 stage, 3.25", no thrds	3	
	81	G004	gasket, vacuum motor	1	
	82	H389	screw, 10-32 x 1/2" SHCS, alloy	1	
	83	H289	washer, 10 flat, s/s	1	
	84	E515	switch, rocker, 2 position	3	
	85	H246	screw, 8-32 x 3/8" SHCS, alloy, Black	4	
	86	H636	plate, switch, ml/trkr, 3 hole	1	

ITEMS NOT SHOWN:

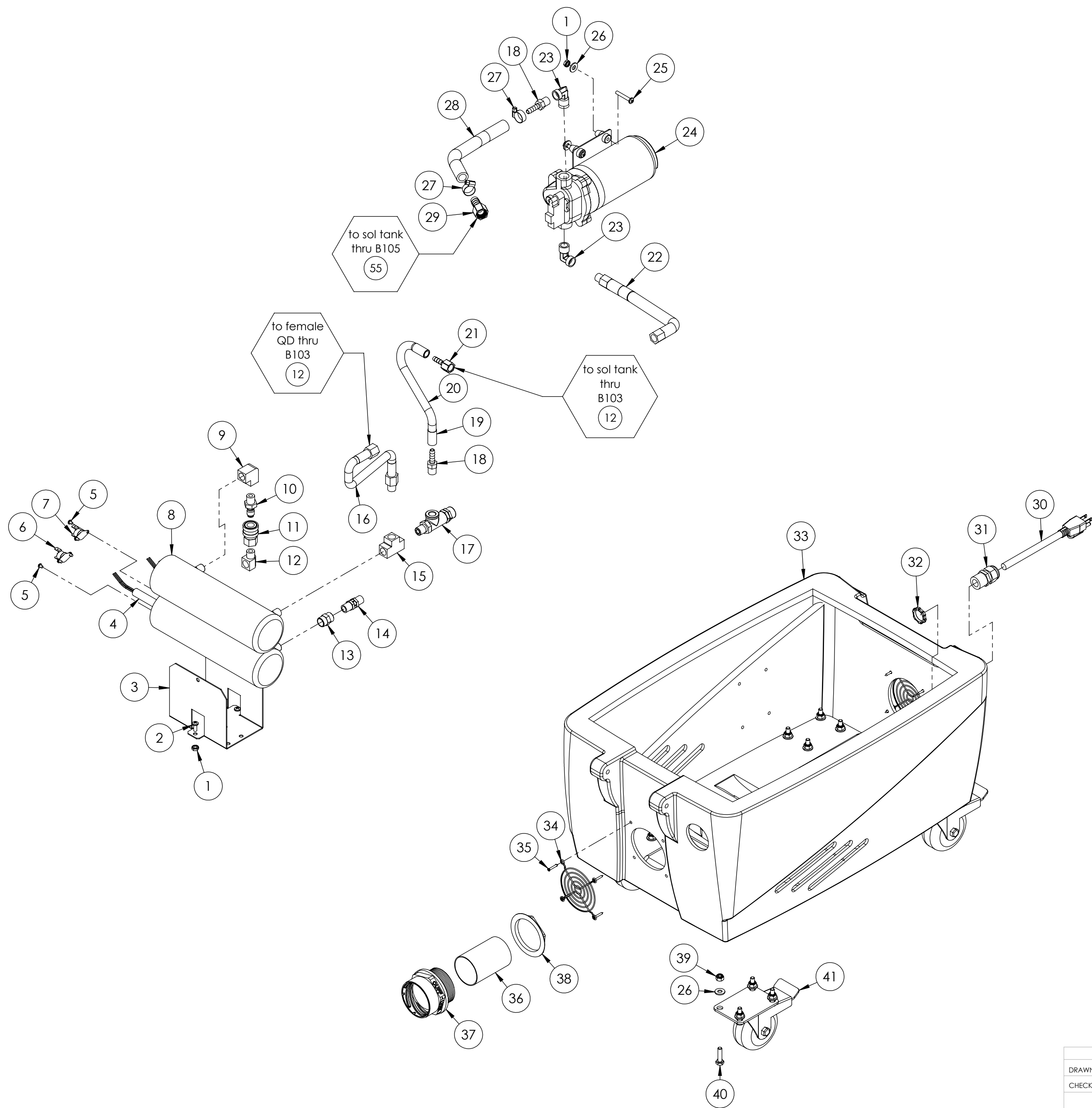
PART NO.	DESCRIPTION	QTY.
8400P	tool, upholstery, 4", Air Lite	1
8501	hose assem, vac/sol, 15' x 1-1/4", cuff, hose in hose	1
E998	harness, electrical	1
G079	hose wrap, heat guard	1
H226	spout, drain, 45 degree	1
P590	cuties, 1/4" qd, standard pack of 2	1

To Order Call: 224-654-6500 [www.UNOCLEAN.com](http://www.UNOCLEAN.com)



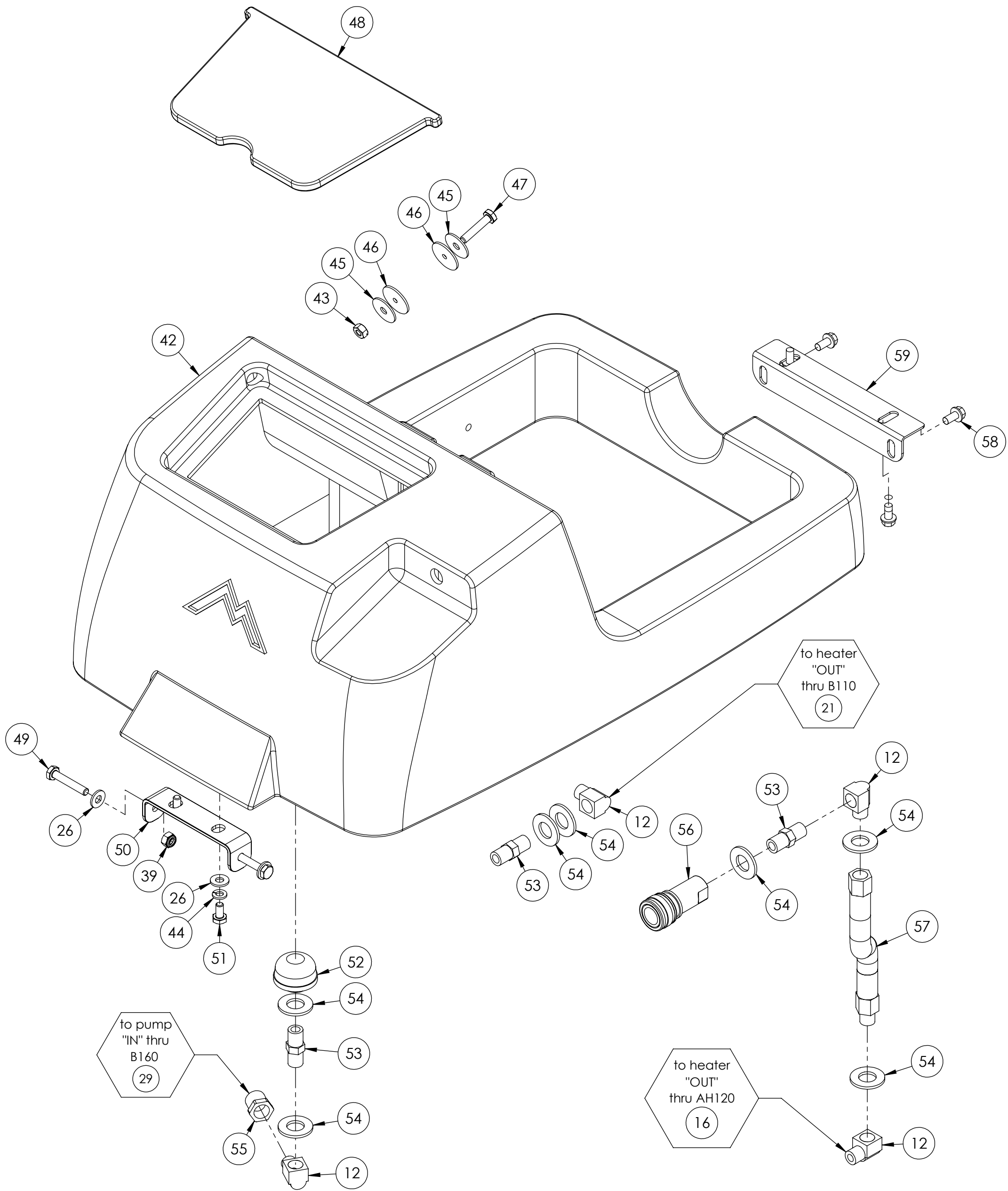
	NAME	DATE	MYTEE		
DRAWN	V. LaBarbera	1/2014	858-679-1191		
CHECKED			TITLE:		
PROPRIETARY AND CONFIDENTIAL THE INFORMATION CONTAINED IN THIS DRAWING IS THE SOLE PROPERTY OF MYTEE LLC. ANY REPRODUCTION IN PART OR AS A WHOLE WITHOUT THE WRITTEN PERMISSION OF MYTEE LLC IS PROHIBITED.			Spyder		
			SIZE	DWG. NO.	REV
			C	HP60	1.24
			SCALE: 1:3	DO NOT SCALE DRAWING	SHEET 1 OF 5

To Order Call: 224-654-6500 [www.UNOCLEAN.com](http://www.UNOCLEAN.com)



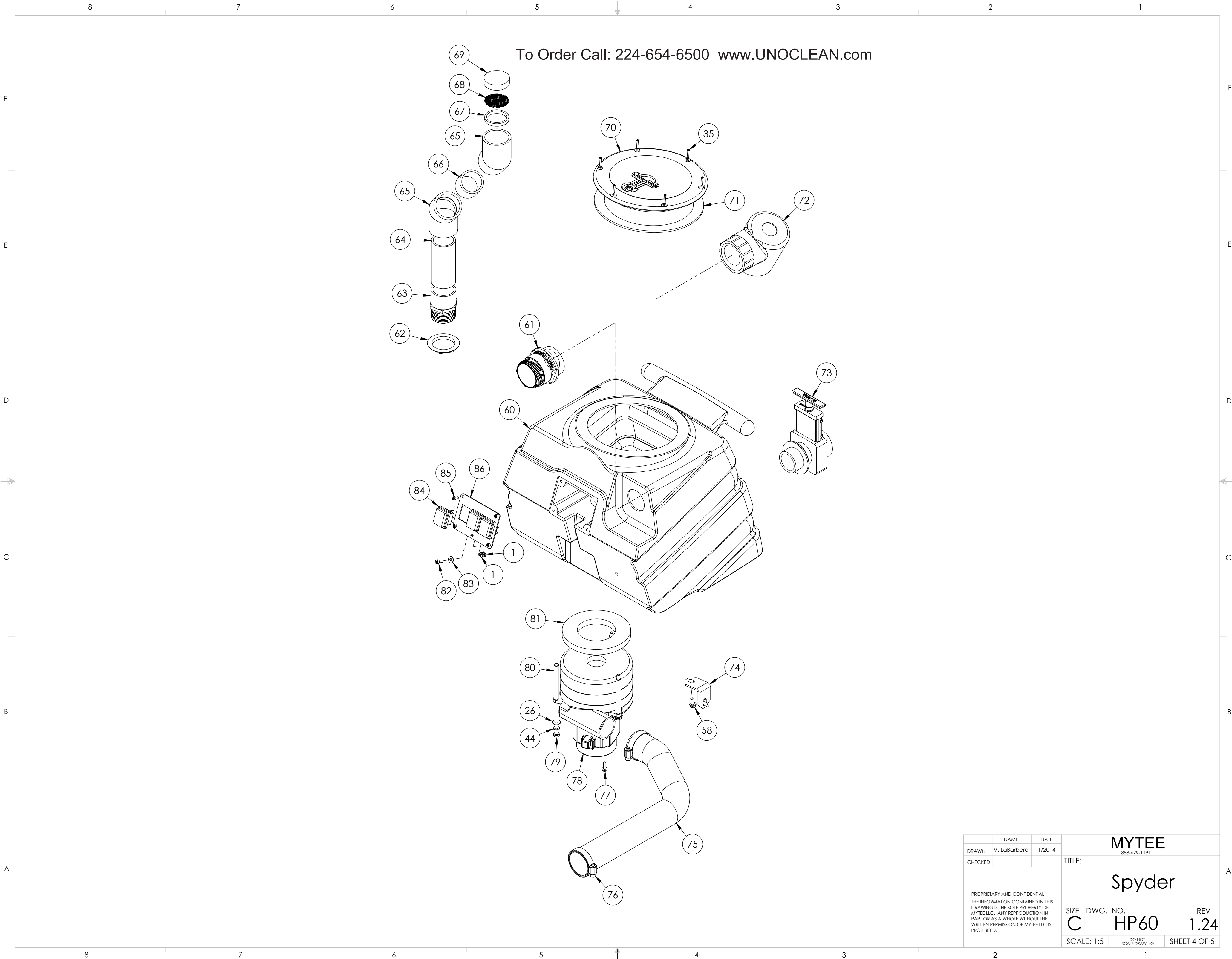
		NAME	DATE	MYTEE	
DRAWN	V. LaBarbera	1/2014		858-679-1191	
CHECKED				TITLE:	
PROPRIETARY AND CONFIDENTIAL THE INFORMATION CONTAINED IN THIS DRAWING IS THE SOLE PROPERTY OF MYTEE LLC. ANY REPRODUCTION IN PART OR AS A WHOLE WITHOUT THE WRITTEN PERMISSION OF MYTEE LLC IS PROHIBITED.				Spyder	
SIZE	DWG. NO.	REV			
C	HP60	1.24			
SCALE: 1:5		DO NOT SCALE DRAWING		SHEET 2 OF 5	

To Order Call: 224-654-6500 [www.UNOCLEAN.com](http://www.UNOCLEAN.com)



	NAME	DATE	MYTEE 858-679-1191		
DRAWN	V. LaBarbera	1/2014			
CHECKED			TITLE:  Spyder		
PROPRIETARY AND CONFIDENTIAL THE INFORMATION CONTAINED IN THIS DRAWING IS THE SOLE PROPERTY OF MYTEE LLC. ANY REPRODUCTION IN PART OR AS A WHOLE WITHOUT THE WRITTEN PERMISSION OF MYTEE LLC IS PROHIBITED.					
SIZE	DWG. NO.		REV		
C	HP60		1.24		
SCALE: 1:5		DO NOT SCALE DRAWING		SHEET 3 OF 5	





To Order Call: 224-654-6500 [www.UNOCLEAN.com](http://www.UNOCLEAN.com)

	NAME	DATE	MYTEE		
DRAWN	V. LaBarbera	1/2014	858-679-1191		
CHECKED			TITLE:		
PROPRIETARY AND CONFIDENTIAL THE INFORMATION CONTAINED IN THIS DRAWING IS THE SOLE PROPERTY OF MYTEE LLC. ANY REPRODUCTION IN PART OR AS A WHOLE WITHOUT THE WRITTEN PERMISSION OF MYTEE LLC IS PROHIBITED.			Spyder		
			SIZE	DWG. NO.	REV
			C	HP60	1.24
			SCALE: 1:5	DO NOT SCALE DRAWING	SHEET 4 OF 5