

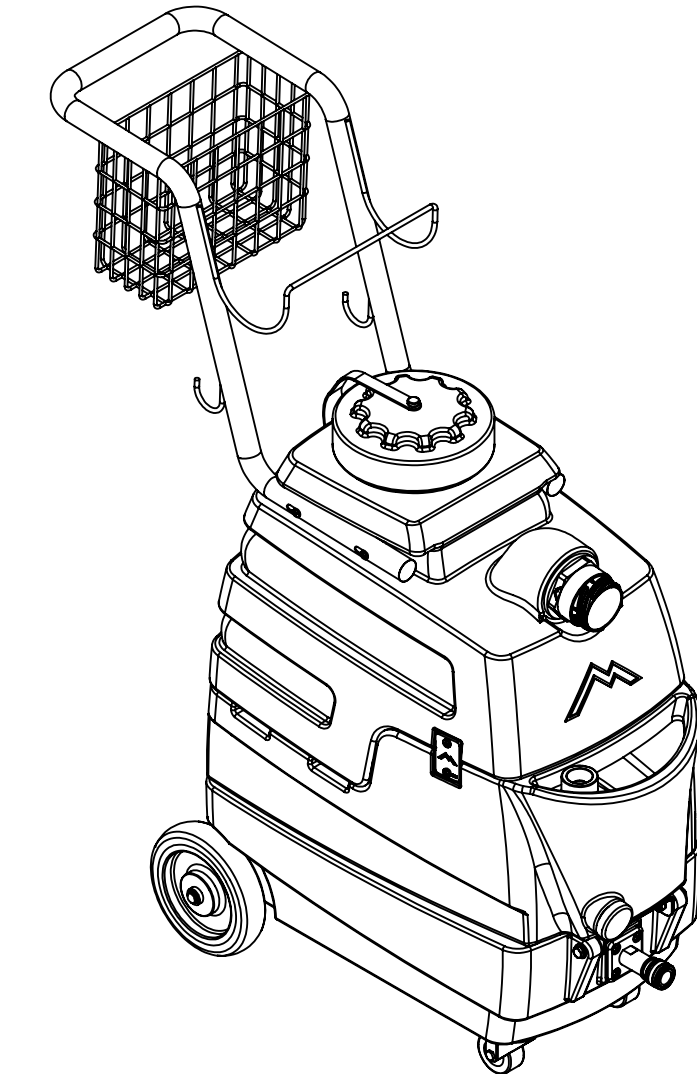
| | | | | | |
|---|----------|----------|---------------------------------------------------|--|------|
| | | 8 | | | 7 |
| | ITEM NO. | PART NO. | DESCRIPTION | | QTY. |
| F | 1 | H135V | Cuff-Lynx, 2" male cuff x 2" mpt, vinyl | | 1 |
| | 2 | P583 | vac tank, MyteeLite | | 1 |
| | 3 | H312 | plate, connecting, MyteeLite | | 4 |
| | 4 | H230 | screw, 10-32 x 1/2", phil pan head, s/s | | 23 |
| | 5 | G036 | cap, 2.5" threaded, tethered | | 1 |
| | 6 | H423 | plug, 7/8", black, heyco | | 2 |
| | 7 | H222 | screw, 10-32 x 1-1/4" phil pan head, s/s | | 6 |
| | 8 | H688-A | handle w/ basket, MyteeLite | | 1 |
| E | 9 | G055 | tether, cap, 6 1/2" | | 1 |
| | 10 | P560 | cap, 6", threaded | | 1 |
| | 11 | G031 | gasket, 3.25" i.d. x 5.80" o.d. | | 1 |
| | 12 | G022 | filter, foam, 2.50" x .50" | | 1 |
| | 13 | G021 | screen, mesh filter, 2.48" dia | | 1 |
| | 14 | H203 | bolt, 1/4-20 x 1-1/4" hex head, s/s | | 2 |
| | 15 | H210 | washer, 1/4" flat, s/s | | 10 |
| | 16 | H216 | nut, lock, 1/4-20, nylon insert, s/s | | 2 |
| D | 17 | H213 | washer, 1/4" lock, s/s | | 2 |
| | 18 | H201 | bolt, 1/4-20 x 1/2" hex head, s/s | | 2 |
| | 19 | H846B | cap, gallon jug, 1-5/8" | | 1 |
| | 20 | H379 | bracket, front, small | | 1 |
| | 21 | P584 | sol tank, MyteeLite | | 1 |
| | 22 | G004 | gasket, vacuum motor | | 2 |
| | 23 | C302P | vac motor, 3 stage | | 1 |
| | 24 | H178 | faucet fill | | 1 |
| C | 25 | B241 | adapter, brass, 3/8" barb x 1/4"mpt | | 1 |
| | 26 | PH612-60 | clear tubing, 1/2" OD x 3/8" ID, faucet fill | | 1 |
| | 27 | H273 | nut, kep, #10-32 zinc | | 19 |
| | 28 | H681 | caster, 2", black hub, gray tread | | 2 |
| | 29 | P585 | base, MyteeLite | | 1 |
| | 30 | H241 | axle, 13.63" x .50" dia | | 1 |
| | 31 | H279 | wheel, 6" | | 2 |
| | 32 | H042 | c-clip, 12mm, external | | 2 |
| B | 33 | H254 | washer, axle, cut 1/2" id | | 4 |
| | 34 | H029 | screw, plastite, 10 x 1/2", s/s | | 4 |
| | 35 | H289 | washer, 10 flat, s/s | | 1 |
| | 36 | H389 | screw, 10-32 x 1/2" SHCS, alloy | | 1 |
| | 37 | E515 | switch, rocker, 2 position | | 3 |
| | 38 | E531 | power cord, end, 25', 12/3 black | | 1 |
| | 39 | H220 | fitting, strain relief, cord | | 1 |
| | 40 | H310 | plate, switch, MyteeLite, 3 hole | | 1 |
| A | 41 | H221 | nut, lock, 1/2" steel, electrical | | 1 |
| | 42 | H486 | latch, front, set, large | | 1 |
| | 43 | G068 | bumper, 7/8" x 1/4" head | | 2 |
| | 44 | B212 | elbow, 90 deg, 3/8"mpt x 1/4"fpt | | 1 |
| | 45 | B260A | quick disconnect, 1/4" mqd x mpt, open-spray | | 1 |
| | 46 | B259A | qd, brass, 1/4" fqd x fpt | | 1 |
| | 47 | AH106 | sol hose, 1/4" X 10", 1/4 msw X 1/4 fpt | | 2 |
| | 48 | C305 | pump, 120 psi, 115V | | 1 |
| | 49 | B170 | ferrule, 1/4" brass | | 2 |
| | 50 | B105 | bushing, brass, 3/8"mpt x 1/4" | | 1 |
| | 51 | B152 | elbow, brass, 90 deg, 1/4" barb x 1/4" mpt | | 1 |
| | 52 | PH634-15 | sol hose, 1/4" silicone braided, clear | | 1 |
| | 53 | B110 | adapter, brass, 1/4" sw barb x 1/4" fpt, w/gasket | | 1 |
| | 54 | B119 | filter, strainer, 1/4" | | 1 |
| | 55 | H212 | flat washer, 9/16"ID x 1 1/16"OD, AN960-C916 | | 2 |
| | 56 | B107 | nipple, hex, 1/4"mpt x 1/4"mpt | | 2 |

| 5 | | 4 | |
|----------|----------|-----------------------------------------------|------|
| ITEM NO. | PART NO. | DESCRIPTION | QTY. |
| 57 | B103 | elbow, 90 deg street, 1/4"mpt x 1/4" fpt | 1 |
| 58 | A901 | heater, 1000wt, 115v | 1 |
| 59 | B148 | valve, check, 1/4"mpt X 1/4"mpt, 1psi, piston | 1 |
| 60 | B207 | elbow, brass, 90 deg, 1/4" fpt x 1/4" fpt | 2 |
| 61 | H484 | plate, mounting, QD | 1 |
| 63 | H256 | screw, 10-32 x 3/4" phil pan head | 4 |
| 63 | B102 | quick disconnect, 1/4" fqd x 1/4" fpt | 1 |

To Order Call: 224-654-6500 www.UNOCLEAN.com

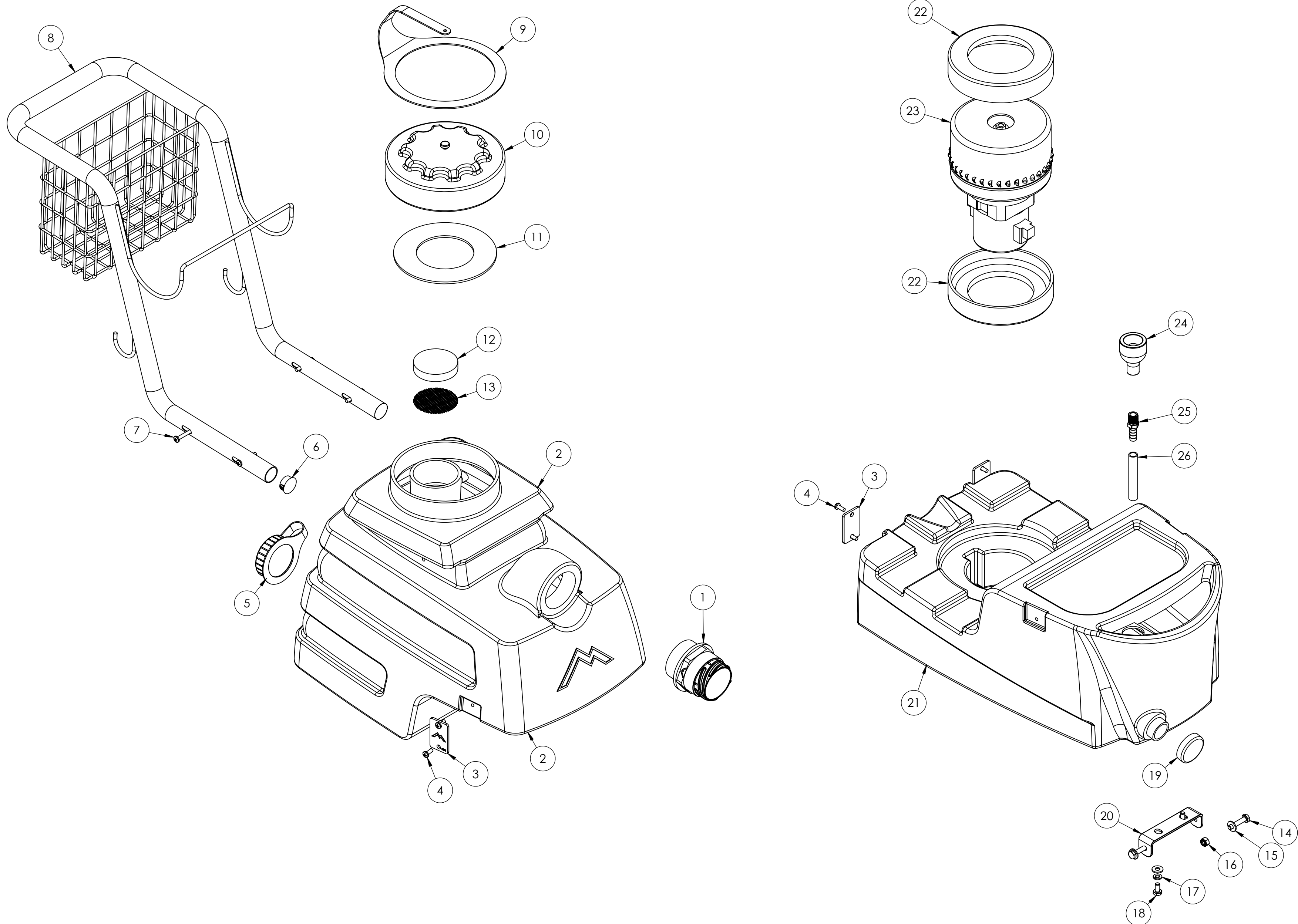
ITEMS NOT SHOWN

| | | |
|----------|-------------------------------------------------------|------|
| PART NO. | DESCRIPTION | QTY. |
| ADM-8070 | manaul, Mytee-Lite | 1 |
| A110 | drain hose w/plug, barb cap, 8070 | 1 |
| E997 | harness, electrical | 1 |
| G036 | cap, 2.5" threaded, tethered | 1 |
| G079 | hose wrap, heat guard | 1 |
| H122V | Cuff-Lynx, 2" fem cuff x 1.25" fem vac hose, vinyl | 1 |
| H133 | Cuff-Lynx, 1-1/4" hose x male & female | 2 |
| P590 | cuties, 1/4" qd, strandard pack of 2 | 1 |
| 8501 | hose assem, vac/sol, 15' x 1-1/4", cuff, hose in cuff | 1 |
| 8400P | upholstery tool, Air Lite | 1 |



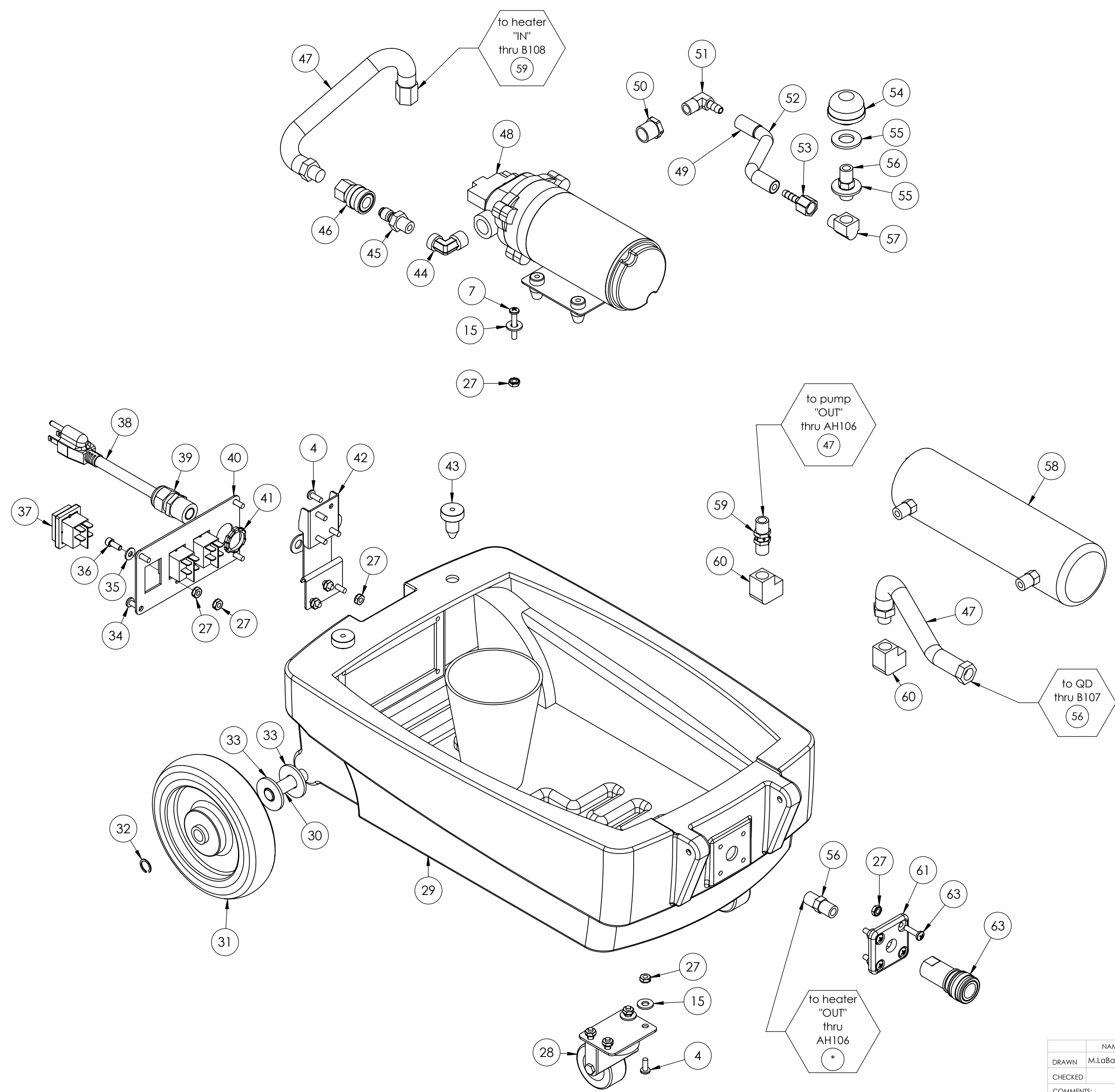
| | | | | | | |
|--------------------------------------------------------------------------------------------------------------------------------------------------------------------------------|-------------|--------|--------------------------|-----------------------|----------------------|--------------|
| | | NAME | DATE | MYTEE 858-679-1191 | | |
| DRAWN | M.LaBarbera | 1/2014 | | | | |
| CHECKED | | | TITLE: Mytee Lite | | | |
| COMMENTS: | | | | | | |
| PROPRIETARY AND CONFIDENTIAL | | | | | | |
| THE INFORMATION CONTAINED IN THIS DRAWING IS THE SOLE PROPERTY OF MYTEE LLC. ANY REPRODUCTION IN PART OR AS A WHOLE WITHOUT THE WRITTEN PERMISSION OF MYTEE LLC IS PROHIBITED. | | | | SIZE | DWG. NO. | REV |
| | | | | C | 8070 | 1.24 |
| | | | | SCALE: 1:24 | DO NOT SCALE DRAWING | SHEET 1 OF 5 |

To Order Call: 224-654-6500 www.UNOCLEAN.com



| | | | | | |
|--------------------------------------------------------------------------------------------------------------------------------------------------------------------------------|-------------|--------|------|----------------------|--------------|
| | | NAME | DATE | MYTEE | |
| DRAWN | M.LaBarbera | 1/2014 | | 858-679-1191 | |
| CHECKED | | | | TITLE: | |
| COMMENTS: | | | | Mytee Lite | |
| PROPRIETARY AND CONFIDENTIAL | | | | SIZE | DWG. NO. |
| THE INFORMATION CONTAINED IN THIS DRAWING IS THE SOLE PROPERTY OF MYTEE LLC. ANY REPRODUCTION IN PART OR AS A WHOLE WITHOUT THE WRITTEN PERMISSION OF MYTEE LLC IS PROHIBITED. | | | | C | 8070 |
| | | | | SCALE: 1:24 | REV 1.24 |
| | | | | DO NOT SCALE DRAWING | SHEET 2 OF 5 |

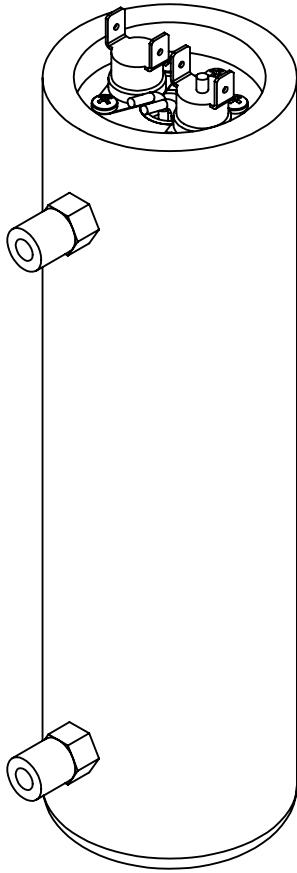
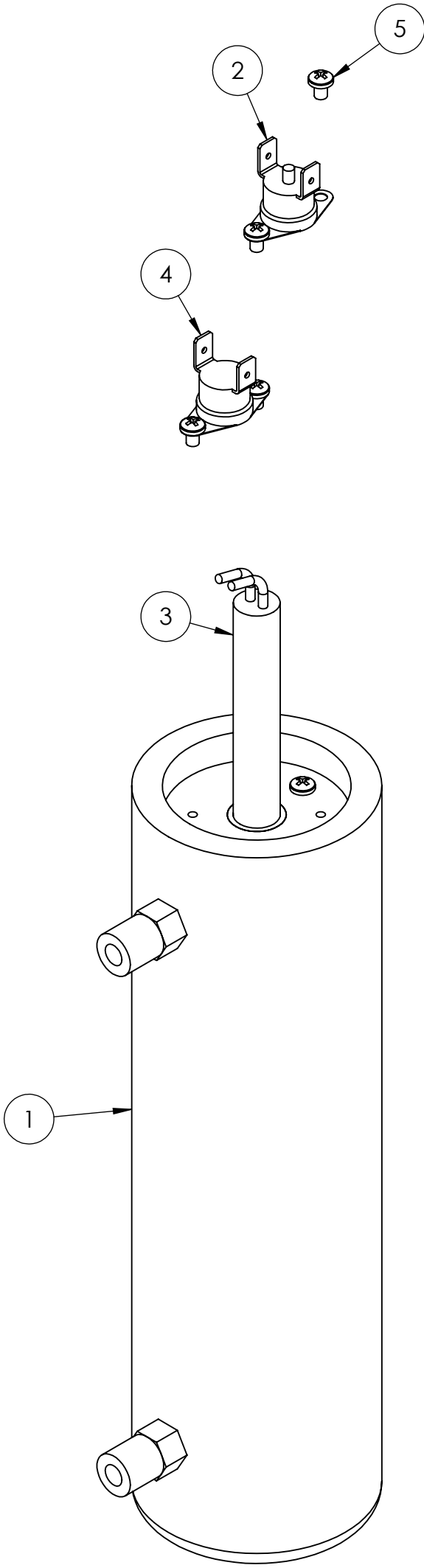
To Order Call: 224-654-6500 www.UNOCLEAN.com



| | | | | | |
|--------------------------------------------------------------------------------------------------------------------------------------------------------------------------------|-------------|--------|------|----------------------|--------------|
| | | NAME | DATE | MYTEE | |
| DRAWN | M.LaBarbera | 1/2014 | | 858-679-1191 | |
| CHECKED | | | | TITLE: | |
| COMMENTS: | | | | Mytee Lite | |
| PROPRIETARY AND CONFIDENTIAL | | | | SIZE | DWG. NO. |
| THE INFORMATION CONTAINED IN THIS DRAWING IS THE SOLE PROPERTY OF MYTEE LLC. ANY REPRODUCTION IN PART OR AS A WHOLE WITHOUT THE WRITTEN PERMISSION OF MYTEE LLC IS PROHIBITED. | | | | C | 8070 |
| | | | | SCALE: 1:24 | REV 1.24 |
| | | | | DO NOT SCALE DRAWING | SHEET 3 OF 5 |

| ITEM NO. | PART NO. | DESCRIPTION | QTY. |
|----------|----------|----------------------------------------------|------|
| 1 | H903A | heater, aluminum cast, single | 1 |
| 2 | E574 | Thermostat, 310°F ± 10°F, Manual, 1/4" | 1 |
| 3 | E519 | heating rod, 1000W, 115V | 1 |
| 4 | E573 | Thermostat, 200°, Auto, 1/4" | 1 |
| 5 | H274 | screw, 6 x 3/16, phil pan head, self-tapping | 5 |

To Order Call: 224-654-6500 www.UNOCLEAN.com



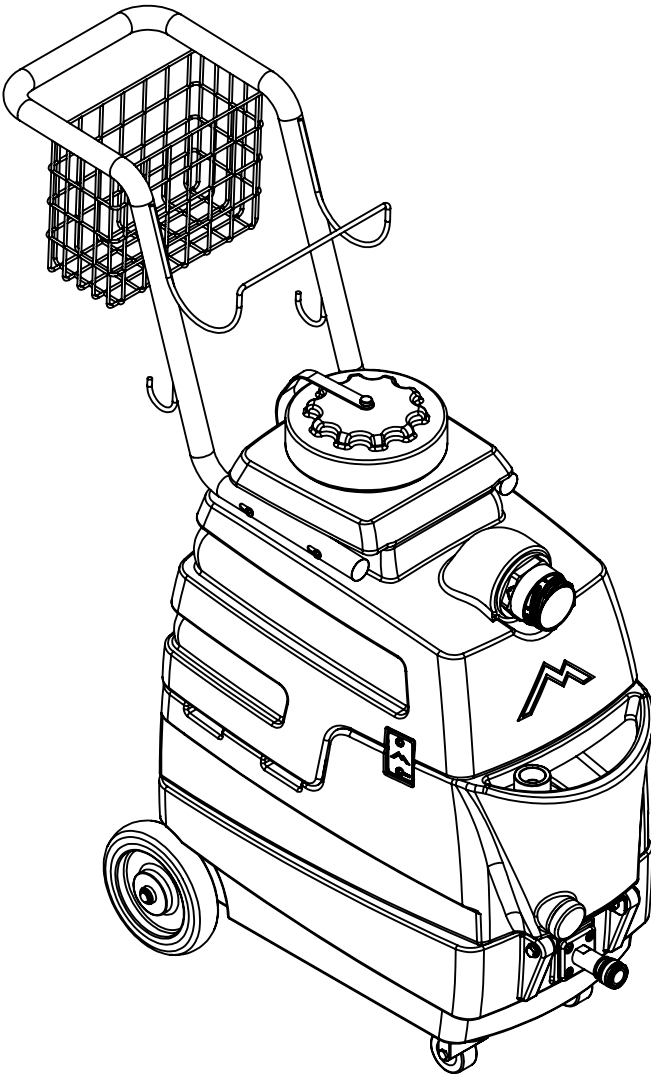
PROPRIETARY AND CONFIDENTIAL
THE INFORMATION CONTAINED IN THIS
DRAWING IS THE SOLE PROPERTY OF
MYTEE PRODUCTS, INC. ANY
REPRODUCTION IN PART OR AS A WHOLE
WITHOUT THE WRITTEN PERMISSION OF
MYTEE PRODUCTS, INC. IS
PROHIBITED.

| | | | |
|---------------------------------------------------------------------------------------------------------|-----------|--------------|---------|
| UNLESS OTHERWISE SPECIFIED: | | NAME | DATE |
| DIMENSIONS ARE IN INCHES TOLERANCES: | DRAWN | M. LaBarbera | 10/2012 |
| ANGULAR: MACH ± .5° ONE PLACE DECIMAL ± .03 TWO PLACE DECIMAL ± .05 THREE PLACE DECIMAL ± .003 | CHECKED | | |
| MATERIAL | COMMENTS: | | |
| FINISH | | | |

| | | |
|-----------------------------------|-------------------------|--------------|
| MYTEE | | |
| 858-679-1191 | | |
| TITLE: heater, 1000wt, 115v | | |
| SIZE C | DWG. NO. 8070 | REV OD |
| SCALE: 1:4 | DO NOT SCALE DRAWING | SHEET 4 OF 5 |

| REVISIONS | | | |
|-----------|--------------------------|-----------|----------|
| REV. | DESCRIPTION | DATE | APPROVED |
| OD | ORIGINAL DRAFT | 1/3/2014 | JFL |
| A | G004A REPLACED WITH G004 | 3/19/2014 | ML |
| B | ADDED H212 AND B170 | 3/19/2014 | ML |
| C | ADDED H029 | 6/18/2014 | ML |
| D | ADDED H423, B110 | 7/11/2014 | ML |
| E | ADDED B241, B111 | 4/15/2015 | ML |
| F | RPLACED B136 WITH B652 | 4/13/2016 | ML |
| 1.24 | REPLACED B108 WITH B148 | 1/11/2024 | ML |

To Order Call: 224-654-6500 www.UNOCLEAN.com



| | | | | | |
|-------------------------------------------------------------------------------------------------------------------------------------------------------------------------------------------------------------------------------------|-------------|--------|--------------|----------------------|--------------|
| | NAME | DATE | MYTEE | | |
| DRAWN | M.LaBarbera | 1/2014 | 858-679-1191 | | |
| CHECKED | | | TITLE: | | |
| COMMENTS: PROPRIETARY AND CONFIDENTIAL THE INFORMATION CONTAINED IN THIS DRAWING IS THE SOLE PROPERTY OF MYTEE LLC. ANY REPRODUCTION IN PART OR AS A WHOLE WITHOUT THE WRITTEN PERMISSION OF MYTEE LLC IS PROHIBITED. | | | Mytee Lite | | |
| | | | SIZE | DWG. NO. | REV |
| | | | C | 8070 | 1.24 |
| | | | SCALE: 1:24 | DO NOT SCALE DRAWING | SHEET 5 OF 5 |