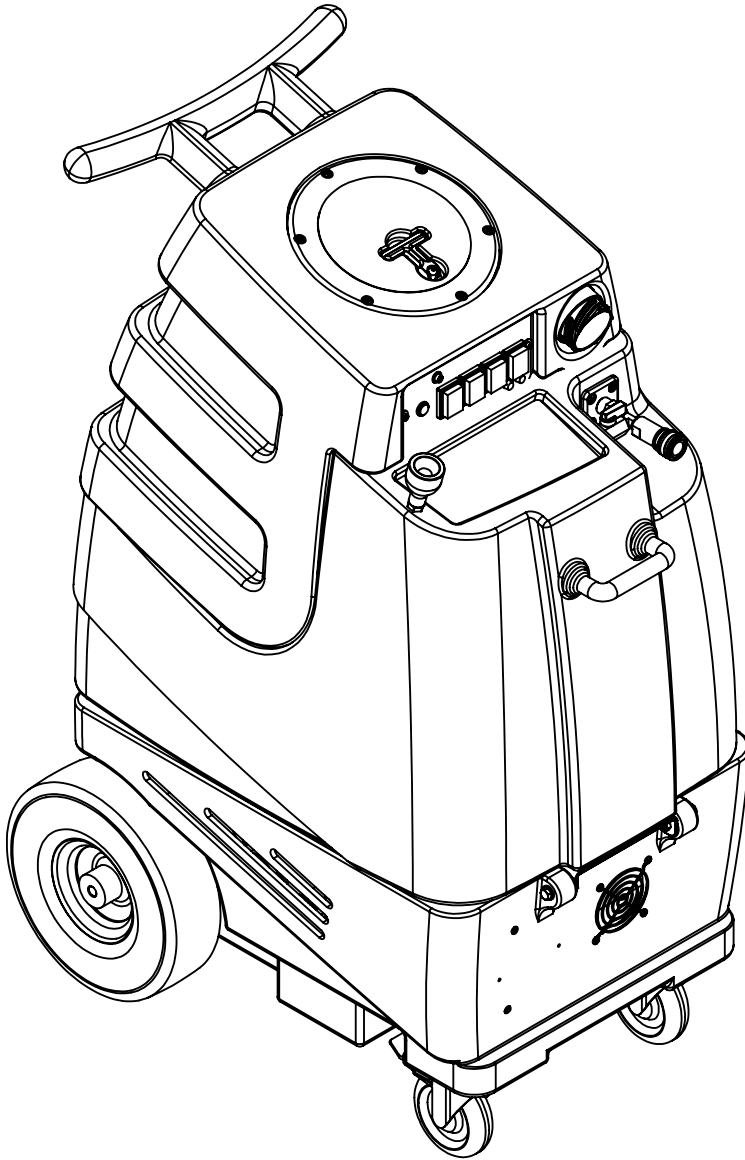
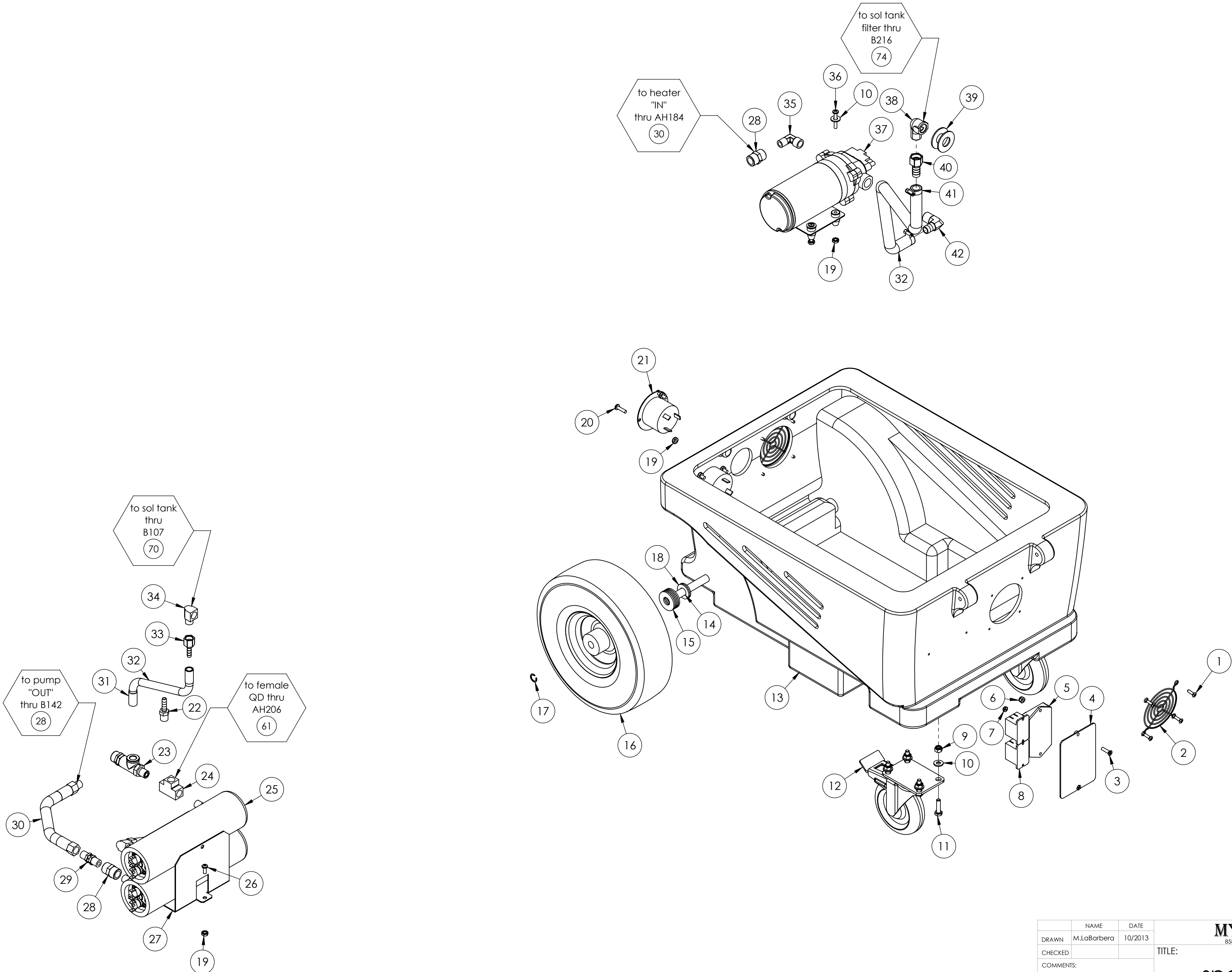


ITEM NO. PART NO. DESCRIPTION QTY.				ITEM NO. PART NO. DESCRIPTION QTY.				ITEMS NOT SHOWN			
1 H304 screw, #8 x 5/8 phil oval, s/s 14				63 B135 tee, 1/4" mpt x 1/4" mpt x 1/4" mpt 1				PART NO. DESCRIPTION QTY			
2 H296 guard, cooling fan, wire 2				64 B102 quick disconnect, 1/4" fqd x 1/4" fpt 1				AK-SPH Speedster accessory bundle 1			
3 H186 screw, 10-32 x 3/4, phil, flat, countersunk, s/s, black 2				65 B656 valve, ball, 1/4" fpt x 1/4" fpt, s/s 1				E996 harness, electrical, 1001 1			
4 H632 plate, mounting, relay switch, dual circuit indicator 1				66 H485 handle, aluminum grip, black 1				E351A powercord, ext 50', 12/3, la066a female twist locks x la0041 male end, sjtw solid jacket 2			
5 E564 controller, circuit light, audible 1				67 H201 bolt, 1/4-20 x 1/2", hex head, zinc 2				P590 cuties, 1/4" qd, standard pack of 2 1			
6 H146 nut, lock, 8-32, nylon insert 2				68 H378 bracket, front hinge, sp/fb 1							
7 H792 nut, lock, 6-32, nylon insert 3				69 H316 bolt, 1/4x1-1/2", hex head zinc 2							
8 E632 relay, shut-off switch, mechanical float, 115v 2				70 B107 nipple, hex, 1/4"mpt x 1/4"mpt 2							
9 H216 nut, lock, 1/4-20, nylon insert, s/s 10				71 H212 flat washer, 9/16"ID x 1 1/16"OD, AN960-C916 4							
10 H210 washer, 1/4" flat, s/s 22				72 B119A filter, strainer, 1/2" fpt 1							
11 H342 bolt, 1/4-20 x 1" hex head, s/s 8				73 B210 bushing, brass, 1/2"mpt x 3/8" fpt, hex 1							
12 H668 caster, 4", black hub & gray tread 2				74 B216 nipple, brass, 3/8" x close 1							
13 P731 base 1				75 H226 spout, drain, 45 degree 1							
14 H371 axle, 18.03" x .50" dia 1				76 H225 valve, drain, 1-1/2" 1							
15 H254 washer, axle, cut 1/2" id 10				77 P733 vac tank, speedster 1							
16 H109 wheel, 10", foam filled 2				78 A926 elbow, inlet assembly 2" 1							
17 H042 c-clip, 12mm, external 2				79 PH633-2.5 pipe, pvc, 1-1/2" 4							
18 H876 washer, 1/2 flat, s/s 4				80 P503 adapter, 1.5" pvc, 45 deg, fslip 4							
19 H273 nut, kep, #10-32 zinc 14				81 P502 adapter, 1.5" pvc, fslip x fslip 2							
20 H256 screw, 10-32 x 3/4" phil pan head 6				82 G097 filter, screen mesh, 1.90" dia 2							
21 E360 flanged male inlet recaptacle, 230V, 20A 2				83 G003 filter, foam, 2", vac stack, 1/2" 2							
22 B109 barb, 1/4" barb x 1/4" mpt 2				84 PH633-.1 pipe, pvc, 1-1/2" 2							
23 B118 valve, brass, relief, 500 psi 1				85 G091 gasket, 7", vac lid 1							
24 B113 tee, 1/4" fpt x 1/4" fpt x 1/4" fpt 2				86 G090 lid, vac tank, clear, 7" 1							
25 A902 heater, 2000wt, 115v 1				87 PH633-6.5 pipe, pvc, 1-1/2" 2							
26 H230 screw, 10-32 x 1/2" phil pan head, s/s 6				88 P520 adapter, 1.5" mpt pvc 2							
27 H528 bracket, heater mounting, dual 1				89 H314 nut, lock, 1-1/2", steel 2							
28 B142 coupling, 1/4" fpt x 1/4" fpt 3				90 H135V Cuff-Lynx, 2" male cuff x 2" mpt, vinyl 1							
29 B108 valve, brass, 1/4" check 1				91 H348 plate, switch, 1000DX-200 1							
30 AH184 sol hose, 1/4" X 14.5" oal, 1/4" msw x 1/4" fpt 1				92 H612 waasher, #8, flat regular 3							
31 B170 ferrule, 1/4" brass 3				93 H389 screw, 10-32 x 1/2" SHCS, alloy 1							
32 PH634-26 sol hose, 1/4", silicone braided, clear 3				94 E516 switch, rocker, 3 position 1							
33 B110 adapter, brass, 1/4" sw barb x 1/4" fpt, w/gasket 1				95 E511 light, red, 250v 2							
34 B103 elbow, 90 deg street, 1/4"mpt x 1/4" fpt 3				96 E515 switch, rocker, 2 position 3							
35 B652 elbow, 90 deg, 3/8"mpt x 1/4"mpt 1				97 E512B light, indicator, blue 1							
36 H222 screw, 10-32 x 1-1/4" phil pan head, s/s 4				98 H246 screw, 8-32 x 3/8" SHCS, alloy, Black 2							
37 C322D pump, 220psi, diaphragm,115V 1				99 E373 level switch, vacuum shut-off, rear threads 2							
38 B186 elbow, 90 deg street, 3/8"mpt x 3/8" fmpt 1				100 H390A bracket, "L", 2" x 2" 2							
39 H299 washer, 11/16"id x 1-1/2"od x .075, s/s 4				101 H343 screw, 10 x 5/8" hex head, zinc 2							
40 B160 adapter, brass, 1/2" barb x 3/8" fsw, ball end 1				102 H096 bolt, hex, 1/4-20 x 4", zinc Finish 6							
41 H347 clamp, hose, 5/16-29/32 2				103 H503 vac support, 3 stage, 3.25", no thrds 6							
42 B172 elbow, brass, 90 deg, 1/2" barb x 3/8"mpt 1				104 C302LA vac motor, 3 stage, low amp 2							
43 H912 bracket, rear, fb/spy 1				105 G004 gasket, vacuum motor 2							
44 H770 bolt, 1/4-20 x 1/2" serrated hex flange, zinc 8				106 G004-A gasket, vacuum motor 2							
45 H307 washer, star, 1/4" steel zinc 2											
46 G052 washer, buna 1-1/8" od x 3/16" id 6											
47 H211 washer, 1/4"id x 1"od, flat, s/s 6											
48 H203 bolt, 1/4-20 x 1-1/4" 2											
49 H217 clamp, hose, 2-1/4 dia 4											
50 H124V CUFF-LYNX, 2" female cuff X 2" male thread starter cuff 2											
51 H194 coupler, 2" dia x 3" length, s/s 2											
52 PH628-15 vac hose, 2", wire reinforced 2											
53 H213 washer, 1/4" lock, s/s 10											
54 H215 nut, hex, 1/4-20 s/s 2											
55 PH612-60 tubing, clear, 1/2" OD x 3/8" ID, faucet fill 1											
56 G018 cover, sol tank (sp) 1											
57 H178 faucet fill 1											
58 B241 adapter, brass, 3/8" barb x 1/4"mpt 1											
59 P732 sol tank, speedster 1											
60 H768 bolt, 1/4-20 x 3/4" serrated hex flange, zinc 2											
61 AH206 sol hose, 1/4" x 28", 1/4 msw x 1/4 mpt 1											
62 H484 plate, mounting, QD 1											



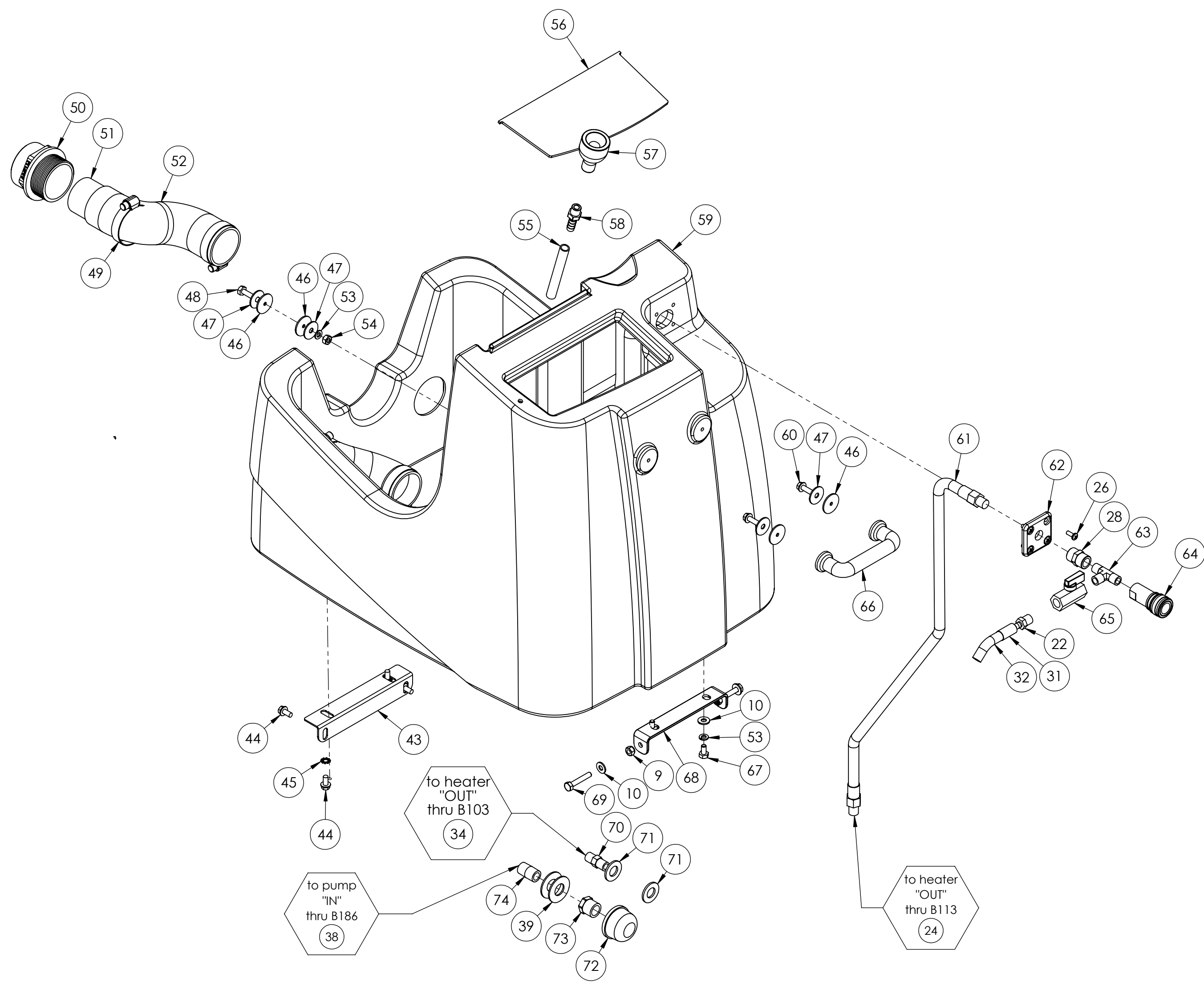
NAME	DATE	TITLE:
DRAWN M.LaBarbera	10/2013	
CHECKED		
COMMENTS:		speedster
PROPRIETARY AND CONFIDENTIAL		
THE INFORMATION CONTAINED IN THIS DRAWING IS THE SOLE PROPERTY OF MYTEE LLC. ANY REPRODUCTION IN PART OR AS A WHOLE WITHOUT THE WRITTEN PERMISSION OF MYTEE LLC IS PROHIBITED.		
SIZE	DWG. NO.	REV
C	1001DX-200	22.6
SCALE: 1:48	DO NOT SCALE DRAWING	SHEET 1 OF 6

To Order Call: 224-654-6500 [www.UNOCLEAN.com](http://www.UNOCLEAN.com)



		NAME	DATE	<b>MYTEE</b> 858-679-1191	
DRAWN	M.LaBarbera		10/2013	TITLE:  speedster	
CHECKED					
COMMENTS:					
PROPRIETARY AND CONFIDENTIAL					
THE INFORMATION CONTAINED IN THIS DRAWING IS THE SOLE PROPERTY OF MYTEE LLC. ANY REPRODUCTION IN PART OR AS A WHOLE WITHOUT THE WRITTEN PERMISSION OF MYTEE LLC IS PROHIBITED.					
SIZE	DWG. NO.		REV		
<b>C</b>	<b>1001DX-200</b>		<b>22.6</b>		
SCALE: 1:48		DO NOT SCALE DRAWING		SHEET 2 OF 6	

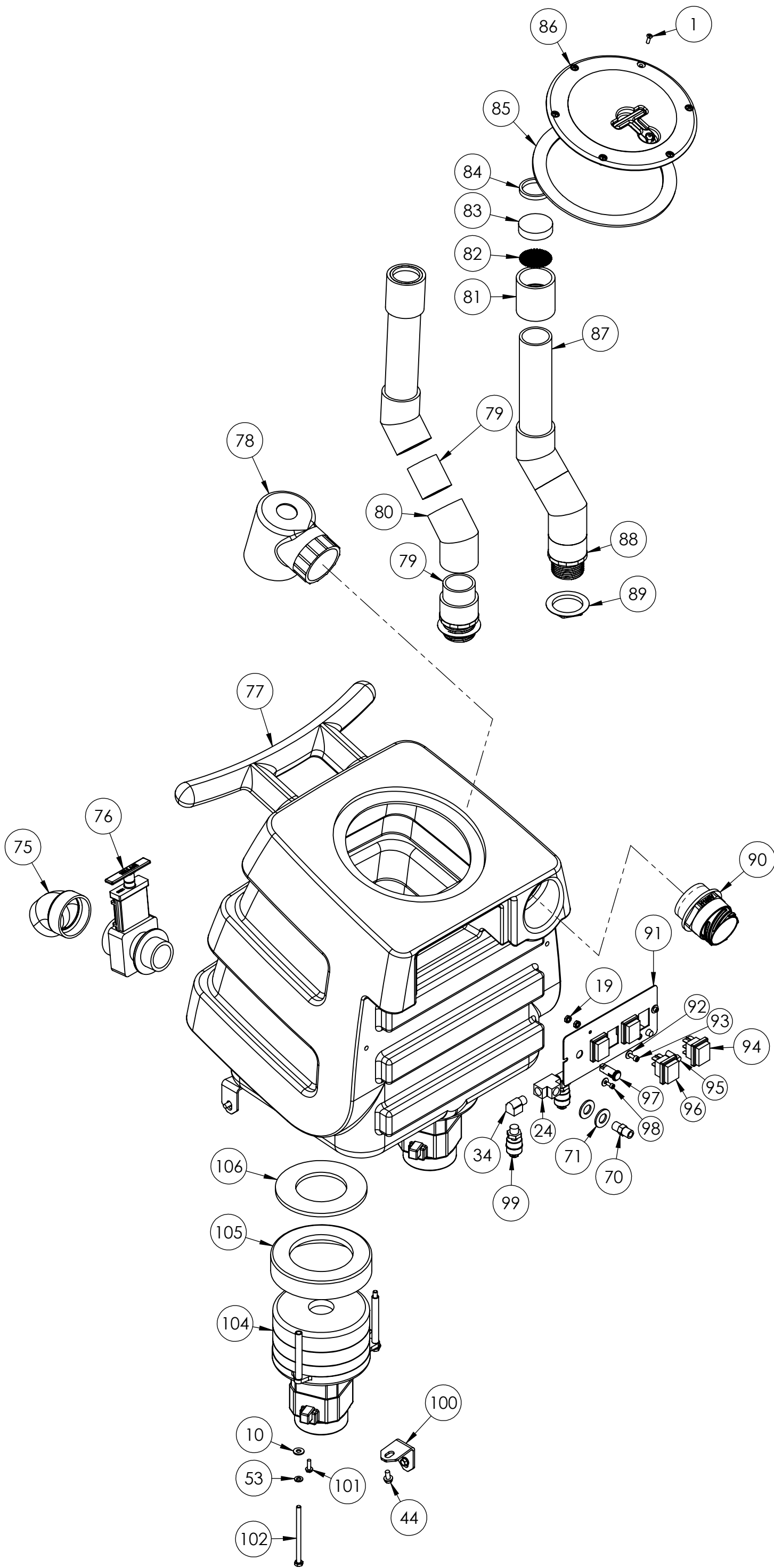
To Order Call: 224-654-6500 [www.UNOCLEAN.com](http://www.UNOCLEAN.com)



		NAME	DATE	<div>MYTEE</div> <div>858-679-1191</div>	
DRAWN	M.LaBarbera		10/2013	TITLE:  speedster	
CHECKED					
COMMENTS:					
PROPRIETARY AND CONFIDENTIAL					
THE INFORMATION CONTAINED IN THIS DRAWING IS THE SOLE PROPERTY OF MYTEE LLC. ANY REPRODUCTION IN PART OR AS A WHOLE WITHOUT THE WRITTEN PERMISSION OF MYTEE LLC IS PROHIBITED.					
SIZE	DWG. NO.		REV		
C	1001DX-200		22.6		
SCALE: 1:48		DO NOT SCALE DRAWING		SHEET 3 OF 6	



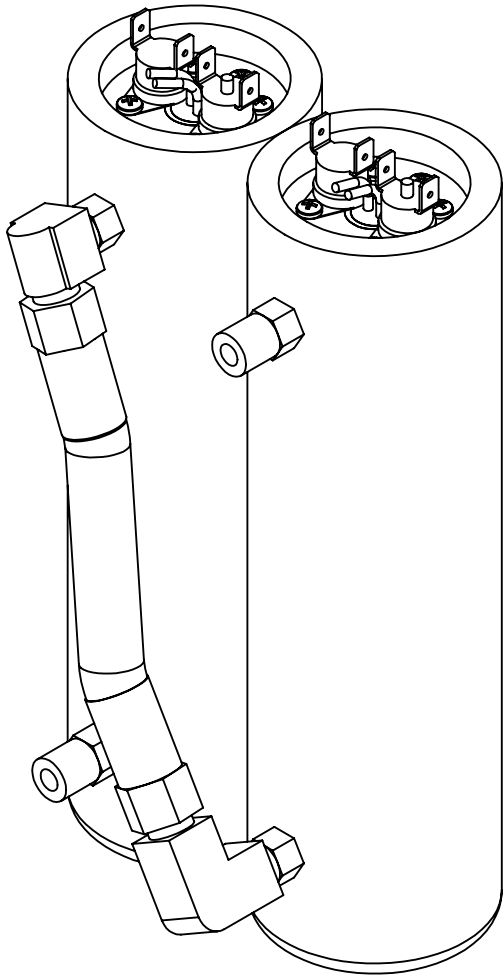
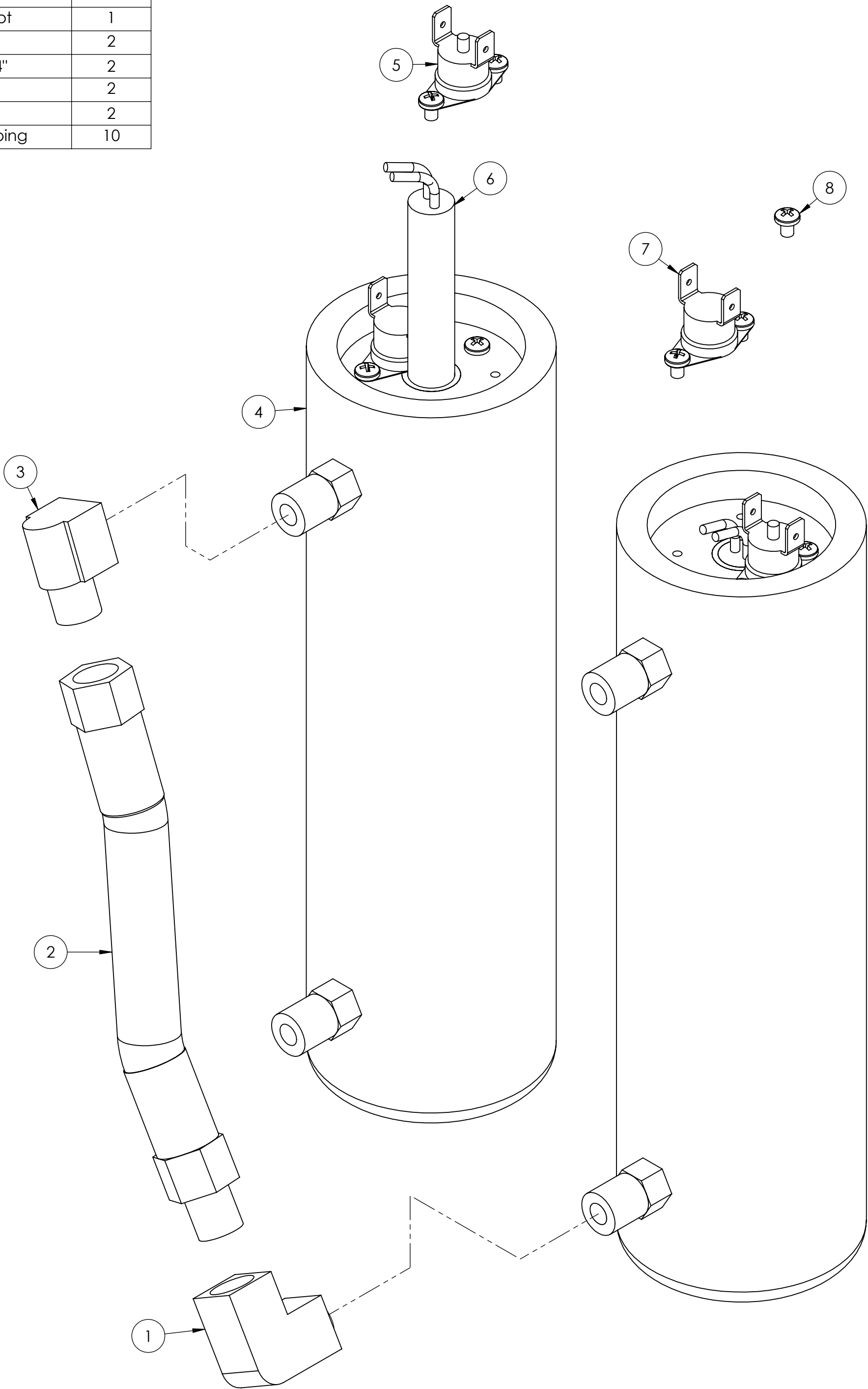
To Order Call: 224-654-6500 [www.UNOCLEAN.com](http://www.UNOCLEAN.com)



	NAME	DATE	<b>MYTEE</b> 858-679-1191		
DRAWN	M.LaBarbera	10/2013	TITLE:  <b>speedster</b>		
CHECKED					
COMMENTS:			REV		
<b>PROPRIETARY AND CONFIDENTIAL</b> <small>THE INFORMATION CONTAINED IN THIS DRAWING IS THE SOLE PROPERTY OF MYTEE LLC. ANY REPRODUCTION IN PART OR AS A WHOLE WITHOUT THE WRITTEN PERMISSION OF MYTEE LLC IS PROHIBITED.</small>			SIZE	DWG. NO.	22.6
			<b>C</b>	<b>1001DX-200</b>	
SCALE: 1:48			DO NOT SCALE DRAWING	SHEET 4 OF 6	

ITEM NO.	PART NO.	DESCRIPTION	QTY.
1	B207	elbow, brass, 90 deg, 1/4" fpt x 1/4" fpt	1
2	AH156	hose, 3/8", (OAL), f x fs, 5400 gray	1
3	B103	elbow, 90 deg street, 1/4"mpt x 1/4" fpt	1
4	H903A	heater, aluminum cast, single	2
5	E574	Thermostat, 310°F ± 10°F, Manual, 1/4"	2
6	E519	heating rod, 1000W, 115V	2
7	E573	Thermostat, 200°, Auto, 1/4"	2
8	H274	screw, 6 x 3/16, phil pan head, self-tapping	10

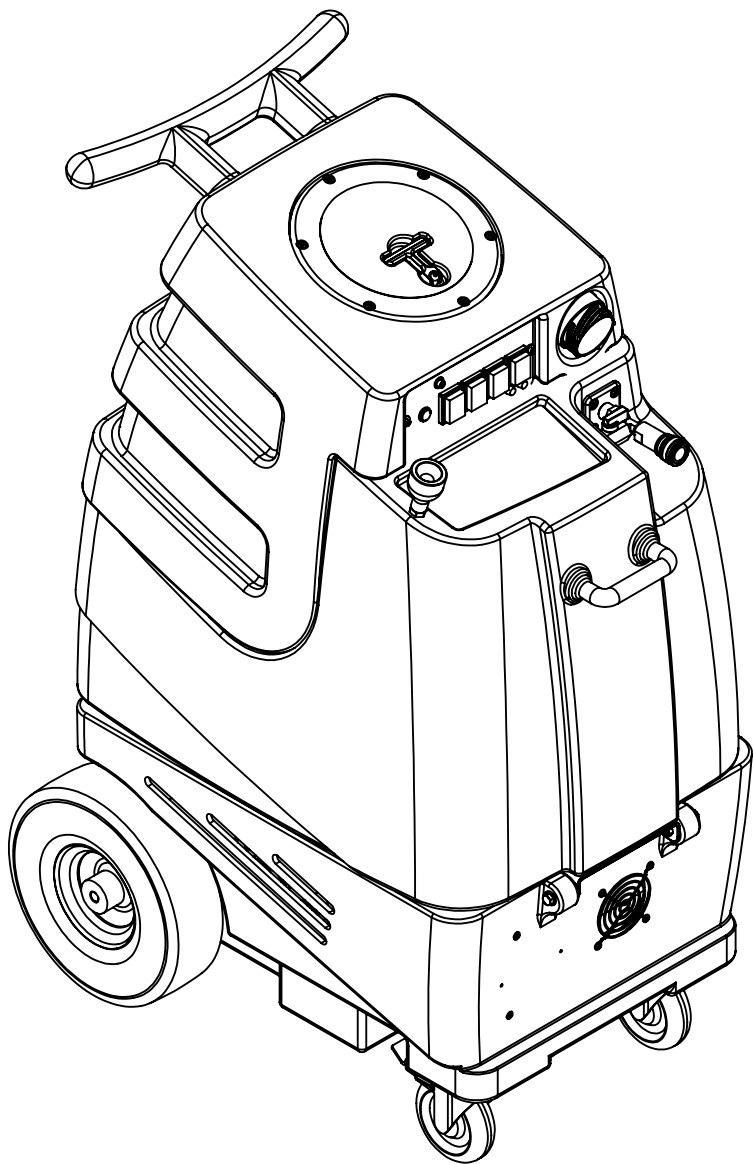
To Order Call: 224-654-6500 [www.UNOCLEAN.com](http://www.UNOCLEAN.com)



	NAME	DATE	<b>MYTEE</b> 858-679-1191	
DRAWN	M.LaBarbera	2/26/10	TITLE: <b>heater, 2000wt, 115v</b>	
CHECKED			SIZE DWG. NO. REV <b>C 1001DX-200 OD</b>	
COMMENTS:  <b>PROPRIETARY AND CONFIDENTIAL</b> <small>THE INFORMATION CONTAINED IN THIS DRAWING IS THE SOLE PROPERTY OF MYTEE LLC. ANY REPRODUCTION IN PART OR AS A WHOLE WITHOUT THE WRITTEN PERMISSION OF MYTEE LLC IS PROHIBITED.</small>			SCALE: 2:2	DO NOT SCALE DRAWING SHEET 5 OF 6

REVISIONS			
REV.	DESCRIPTION	DATE	APPROVED
OD	ORIGINAL DRAFT	-	JFL
A	REPLACED G003 W G022	8/2013	JFL
B	REPLACED H033 W H342, ADDED H210 & H216	10/8/2013	JFL
C	G021 REPLACED W G097	10/22/2013	JFL
D	REPLACED G022 W G003	7/29/2014	ML
E	REPLACED H219 W H042	8/8/2014	ML
F	ADDED B241	4/16/2015	ML
G	REMOVED ELECTRONIC FLOAT	3/8/2016	ML
22.6	AH206 REPLACES AH120	6/2022	ML

To Order Call: 224-654-6500    [www.UNOCLEAN.com](http://www.UNOCLEAN.com)



	NAME	DATE	<b>MYTEE</b> 858-679-1191	
DRAWN	M.LaBarbera	10/2013	TITLE:  speedster	
CHECKED				
COMMENTS:			SIZE DWG. NO. REV <b>C 1001DX-200 22.6</b>	
<b>PROPRIETARY AND CONFIDENTIAL</b>  THE INFORMATION CONTAINED IN THIS DRAWING IS THE SOLE PROPERTY OF MYTEE LLC. ANY REPRODUCTION IN PART OR AS A WHOLE WITHOUT THE WRITTEN PERMISSION OF MYTEE LLC IS PROHIBITED.				
SCALE: 1:48		DO NOT SCALE DRAWING	SHEET 6 OF 6	