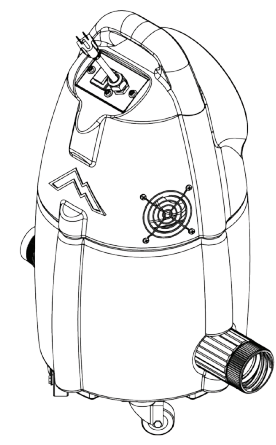
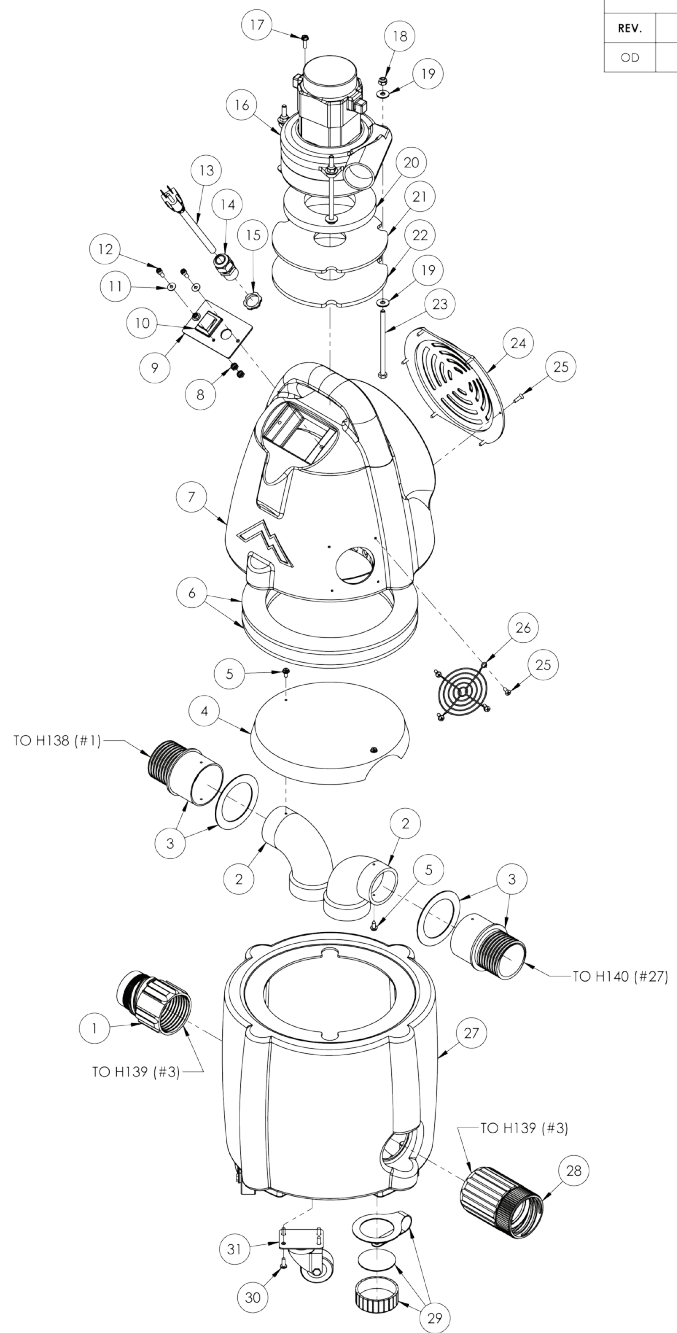


ITEM NO.	PART NO.	DESCRIPTION	QTY.
1	H138	cool cuff, starter part fitting w/ gasket	1
2	P547	elbow, 90 degrees, 2", abs	2
3	H139	cool cuff, male cool cuff x female thread 2"	2
4	P973	splash guard, booster	1
5	H320	screw, #10 x 1/2" hex head, zinc	4
6	G005	gasket, vac lid, sp	2
7	P525	motor housing, booster	1
8	H273	nut, kep, #10-32 zinc	2
9	H410	plate, switch, spotter	1
10	E515	switch, rocker, 2 position	1
11	H612	washer, #8 flat, s/s	3
12	H389	screw, #10-32 x 1/2" SHCS, alloy	3
13	E532	power cord, end, 25', 14/3	1
14	H220	fitting, strain relief, cord	1
15	H221	nut, lock, 1/2" steel	1
16	C302A	vac motor, 3 stage HP, 115V, tangential	1
17	H343	screw, #10 x 5/8" hex head, zinc	1
18	H216	nut, lock, 1/4-20, nylon insert, s/s	3
19	H210	washer, 1/4" flat, s/s	6
20	G004	gasket, vacuum motor	1
21	H801	disc, support, vac motor	1
22	G143	gasket, lid, av1/bv1	1
23	H496	bolt, 1/4-20 x 5"	3
24	P972	vent, booster	1
25	H304	screw, #8 x 5/8 phil oval, s/s	10
26	H296	guard, cooling fan, wire	1
27	P526	tank, booster	1
28	H140	cool cuff, female swivel x female thread 2"	1
29	G036	cap, 2.5" threaded, tethered	1
30	H230	screw, 10-32 x 1/2 phil pan	16
31	H681	caster, 2"	4



REVISIONS			
REV.	DESCRIPTION	DATE	APPROVED
OD	ORIGINAL DRAFT	6/24/2009	JFL

DRAWN: J. Avery CHECKED:	NAME: J. Avery DATE: 6/24/09	<b>MYTEE PRODUCTS, INC.</b> 888.875.1127
PROPRIETARY AND CONFIDENTIAL THE INFORMATION CONTAINED IN THIS DRAWING IS THE SOLE PROPERTY OF MYTEE PRODUCTS, INC. ANY REPRODUCTION OR TRANSMISSION OF THIS DRAWING WITHOUT THE WRITTEN PERMISSION OF MYTEE PRODUCTS, INC. IS PROHIBITED.		TITLE: <b>vacuum booster, 3 st          115 CFM</b>
SIZE: <b>C</b>	DWG. NO.: <b>7503</b>	REV: <b>OD</b>
SCALE: 1:20	SHEET 1 OF 1	