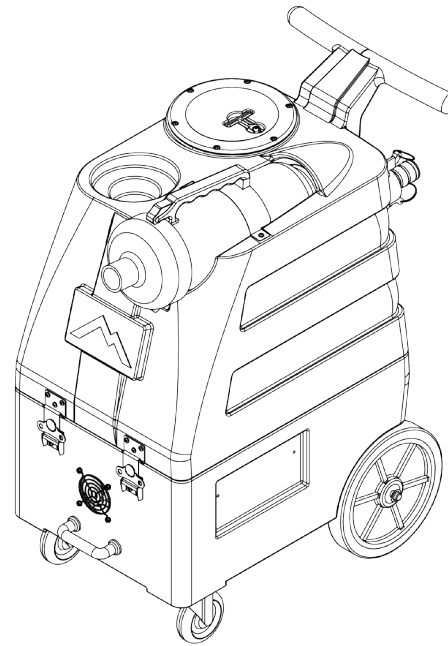
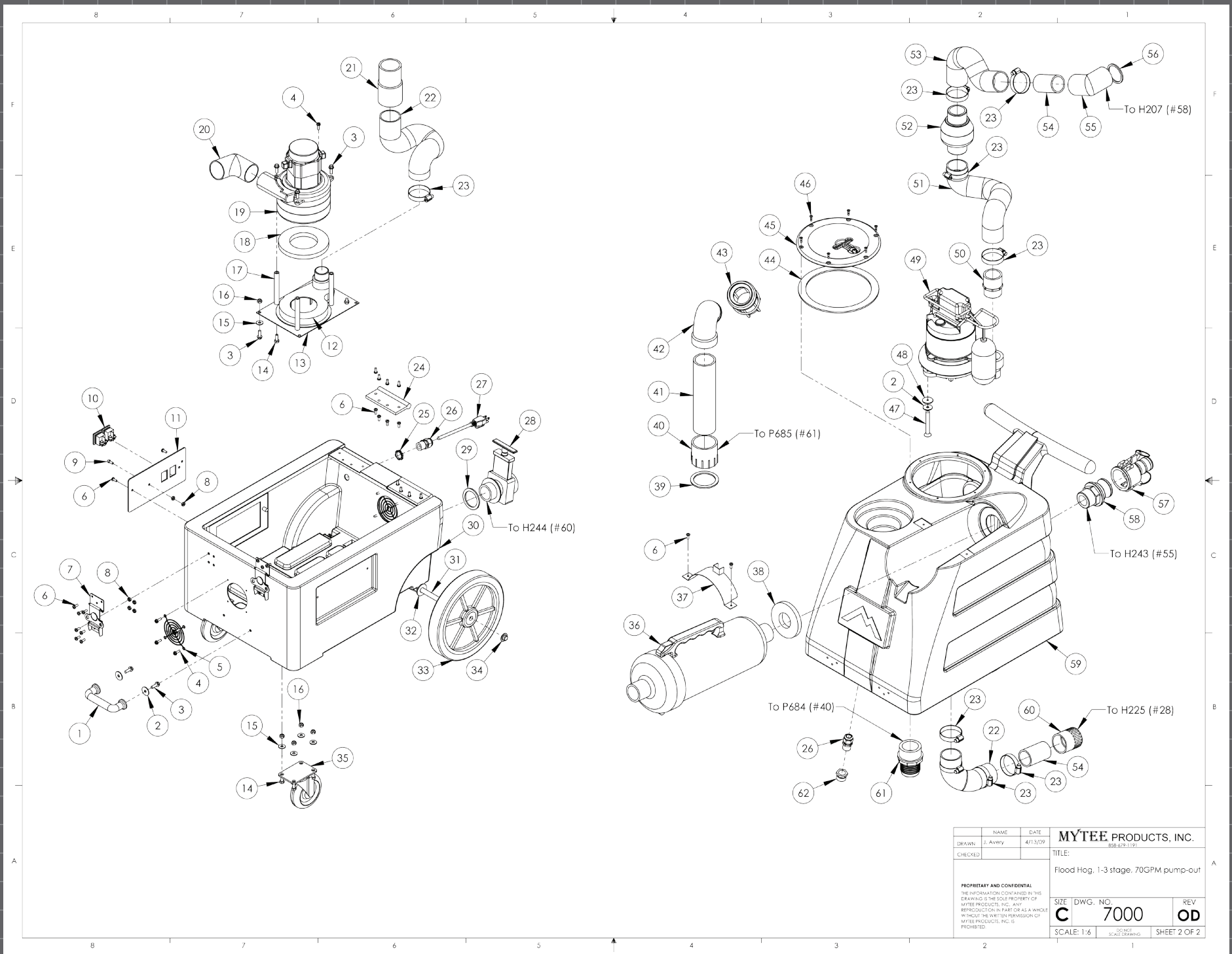


ITEM NO.	PART NO.	DESCRIPTION	QTY.
1	H485	handle, breeze and dx	1
2	H211	washer, 1/4" id x 1" od, flat, s/s	4
3	H768	bolt, 1/4-20 x 3/4" serrated hex flange, zinc	8
4	H343	screw, #10 x 5/8" hex head, zinc	9
5	H296	guard, cooling fan, wire	2
6	H230	screw, 10-32 x 1/2 phil pan	34
7	H486	latch, front breeze	2
8	H273	nut, kep, #10-32 zinc	10
9	H389	screw, 10-32 x 1/2" SHCS, alloy	1
10	E515	switch, rocker, 2 position	2
11	H901	switch plate, 2-hole, kodiak	1
12	P735	manifold, single vac, no gasket	1
13	H330	plate, single manifold, 6.5" x 9"	1
14	H202	bolt, 1/4-20 x 3/4" hex head, s/s	11
15	H210	washer, 1/4" flat, s/s	11
16	H216	nut, lock, 1/4-20, nylon insert, s/s	11
17	H501	vac support, 3 stage, 4-1/16"	3
18	G004	gasket, vacuum motor	1
19	C302	vac motor, 3 stage, 120V, tangential	1
20	G059	exhaust boot, plastisol	1
21	H544	cuff hose, 2 X 2, wire reinforced	1
22	PH628-24	vac hose, 2", wire reinforced, gray	2
23	H217	clamp, hose, 2-1/4 DIA	10
24	H487	bracket, hinge	2
25	H221	nut, lock, 1/2" steel	1
26	H220	fitting, strain relief, cord	2
27	E531	power cord, end, 25', 12/3 black	1
28	H225	valve, drain, 1-1/2"	1
29	G001	gasket, inlet, 1.80" i.d.	1
30	P696	base, breeze	1
31	H371	axle, 1/2" x 18-1/2", sp, breeze	1
32	H254	washer, axle, cut 1/2" id	2
33	H392	wheel, 10", Black Hub & Gray Tread	2
34	H219	cap, axle, 1/2"	2
35	H668	caster, 4", black hub & gray tread	2
36	H550	leaf trap w/ filter	1
37	H972	strap, metal, leaf trap, flood extractor	1
38	G075	gasket, vacuum, ml II	1
39	G002	gasket, cam fitting polyethylene, 2.35" OD 1.90" ID	1
40	P684	adaptor, pvc 2, fmsl x fmsl	1
41	P682-9	pipe, pvc, 2"	1
42	P726	elbow, 2" float	1
43	H490	float, 2", ball style	1
44	G091	gasket, 7", vac lid	1
45	G090	lid, vac tank, black, 7"	1
46	H304	screw, #8 x 5/8 phil oval, s/s	6
47	H497	10-24 x 3" phil-flat ms s/s	2
48	G052	washer, buna 1-1/8" od x 3/16" id	2
49	C384-A	pump out, zoeller, flood extra	1
50	P673	adapter, pvc, 1-1/2" mpt x 1-1/4" fms	1
51	PH628-16	vac hose, 2", wire reinforced, gray	1
52	P674	check valve, swing, pvc 1-1/4"	1
53	PH628-9	vac hose, 2", wire reinforced, gray	1
54	PH633-03	pipe, pvc, 1-1/2"	2
55	H243	elbow, 90, pvc, 1.5" fmsl x fms	1
56	G043	gasket, cam fitting, flood extractor	1
57	H205	cam & groove fitting 1-1/2", female	1
58	H207	cam & groove fitting 1-1/2", male	1
59	P964	vac tank, portable pump out, flood extractor	1
60	H244	adapter, pvc, 1-1/2" fms x fmsl	1
61	P685	inlet, 2"	1
62	B196	fitting, brass, 3/4" mgh x 1/2" fpt	1

REVISIONS			
REV.	DESCRIPTION	DATE	APPROVED
OD	ORIGINAL DRAFT	4/15/2009	JFL



DRAWN	J. Avery	DATE	4/13/09	MYTEE PRODUCTS, INC.	
CHECKED				TITLE:	
<small>PROPRIETARY AND CONFIDENTIAL THE INFORMATION CONTAINED IN THIS DRAWING IS THE SOLE PROPERTY OF MYTEE PRODUCTS, INC. ANY REPRODUCTION IN PART OR AS A WHOLE WITHOUT THE WRITTEN PERMISSION OF MYTEE PRODUCTS, INC. IS PROHIBITED.</small>				SIZE	DWG. NO.
				C	7000
SCALE: 1:6				REV	OD
SHEET 1 OF 2					



	NAME	DATE	MYTEE PRODUCTS, INC.	
DRAWN	J. Avery	4/13/09	888.477.1191	
CHECKED			TITLE:	
			Flood Hog, 1-3 stage, 70GPM pump-out	
<small>PROPRIETARY AND CONFIDENTIAL THE INFORMATION CONTAINED IN THIS DRAWING IS THE SOLE PROPERTY OF MYTEE PRODUCTS, INC. ANY REPRODUCTION IN PART OR AS A WHOLE WITHOUT THE WRITTEN PERMISSION OF MYTEE PRODUCTS, INC. IS PROHIBITED.</small>			SIZE	REV
			C	7000
			SCALE: 1:6	DWG. NO. 7000
			DATE: 4/13/09	REV OD
			SHEET 2 OF 2	