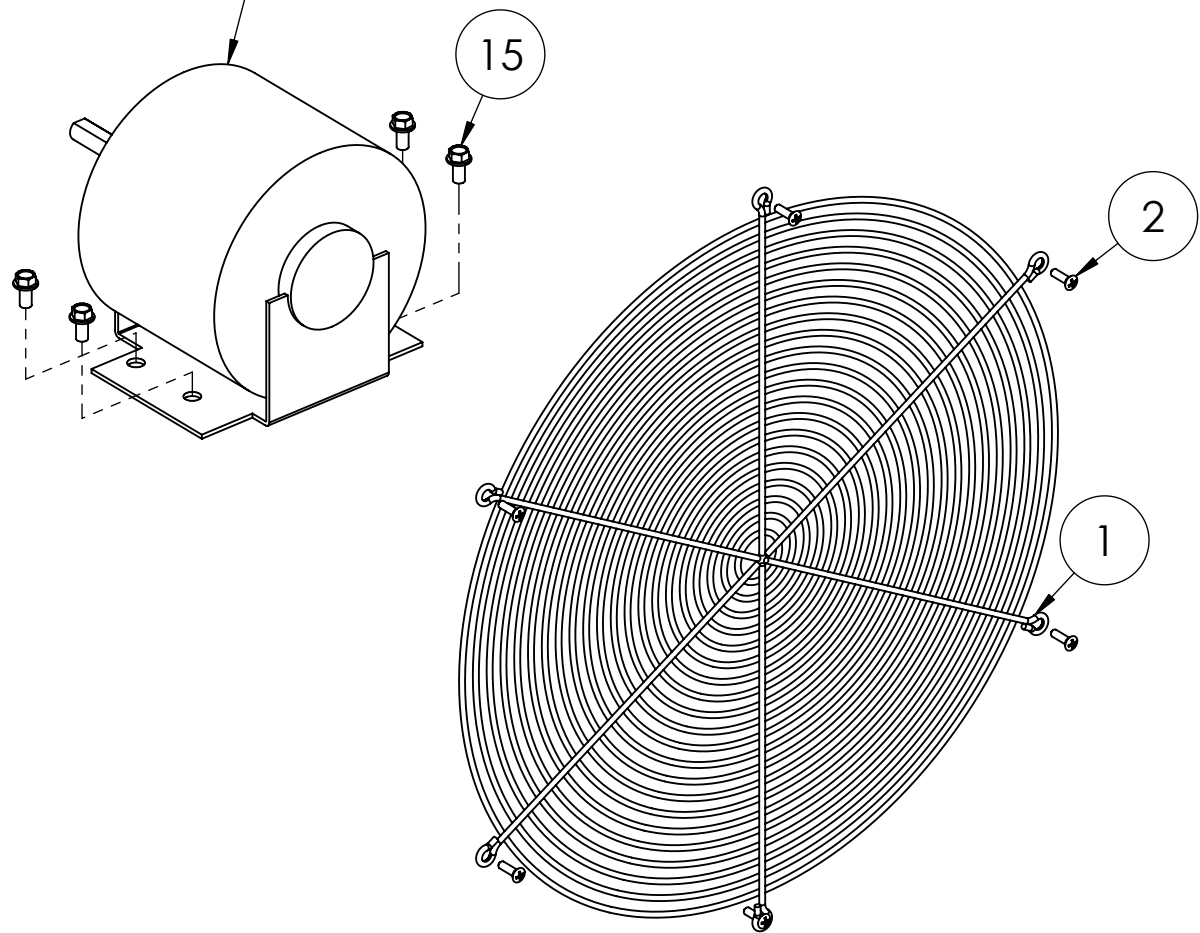
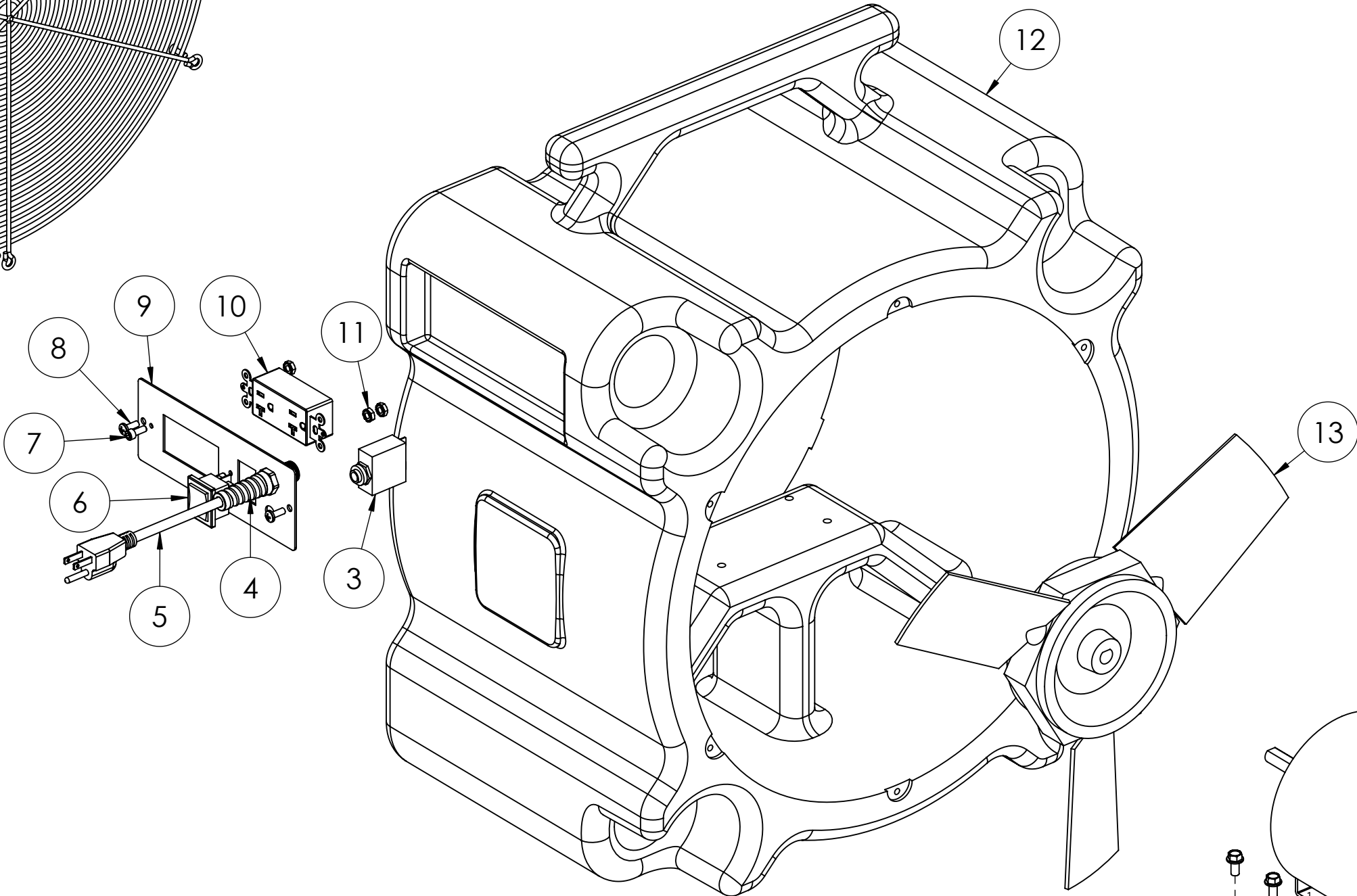
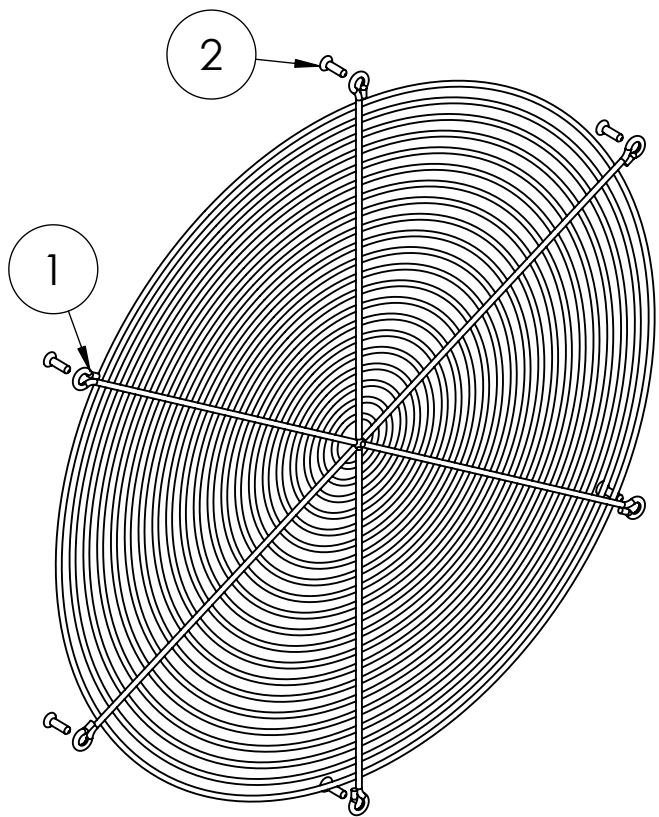


REVISIONS			
REV.	DESCRIPTION	DATE	APPROVED
OD	ORIGINAL DRAFT	7/2007	JFL



ITEM NO.	PART NO.	DESCRIPTION	QTY.
1	H930	guard, airmover	2
2	H304	screw, #8 x 5/8 phil oval, s/s	12
3	E584	circuit breaker, 12Amp	1
4	H856	fitting, strain relief, 3/8" mpt, w/spring.	1
5	E533	power cord, end, 25', 16/3	1
6	E516	switch, rocker, 3 position	1
7	H389	screw, #10-32 x 1/2" SHCS, alloy	2
8	H230	screw, 10-32 x 1/2 phil pan	2
9	H950	Switch plate, Airmover (II)	1
10	E910	Receptacle, 15mp GFI, Black	1
11	H273	nut, kep, #10-32 zinc	3
12	P960	Housing, axial fan, blkgran	1
13	H928	fan, 3 blade	1
14	C382	motor, 1/4 hp, 115v	1
15	H770	bolt, 1/4-20 x 1/2" serrated hex flange, zinc	4

	NAME	DATE	MYTEE PRODUCTS, INC. 858-679-1191	
DRAWN	V. LaBarbera	7/07		
CHECKED			TITLE:	
PROPRIETARY AND CONFIDENTIAL THE INFORMATION CONTAINED IN THIS DRAWING IS THE SOLE PROPERTY OF MYTEE PRODUCTS, INC. ANY REPRODUCTION IN PART OR AS A WHOLE WITHOUT THE WRITTEN PERMISSION OF MYTEE PRODUCTS, INC. IS PROHIBITED.			tradewind airmover	
			SIZE	DWG. NO.
			C	3000
			SCALE: 1:4	DO NOT SCALE DRAWING
			SHEET 1 OF 1	REV
				OD