

# 705 Series Industrial Air Operated Vacuum

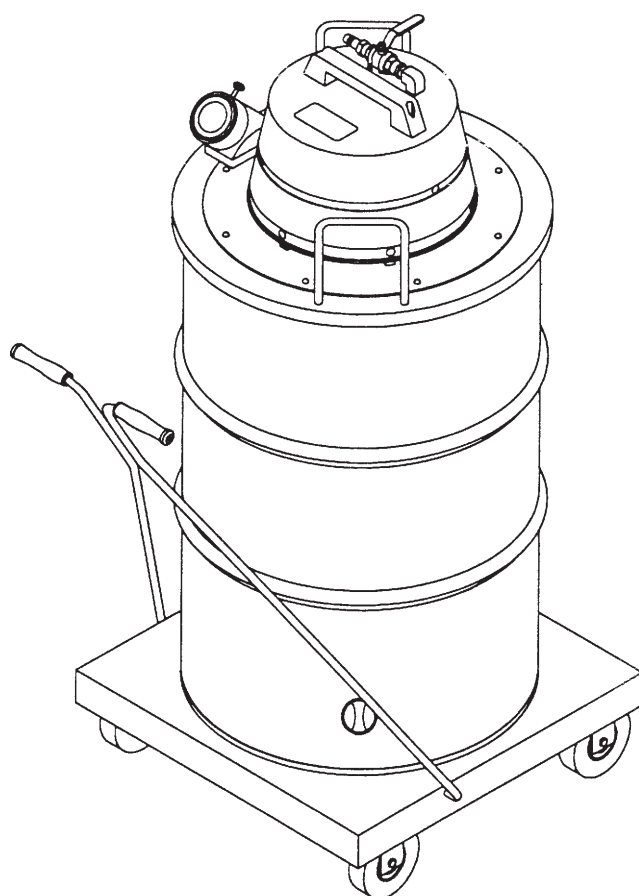
Model:  
C70555-55  
C70555-56

OPERATION

SERVICE

PARTS

CARE



Revised 4/05

***Minuteman***<sup>®</sup>

# **MODEL 705 SINGLE VENTURI AIR OPERATED WET/DRY VACUUM**

## **OPERATING INSTRUCTIONS**

### **INSPECTION**

Carefully unpack and inspect your machine for shipping damage. Each unit is tested and thoroughly inspected before shipment, therefore, any damage is the responsibility of the delivering carrier who should be notified. Read all instructions carefully before operating.

### **SPECIAL WARNING**

Air operated equipment can generate static electricity during use. Static dissipating arcing can be generated and occur if equipment and accessories are not grounded. Risk of explosion is possible if operated near explosive materials or vapors. Do not operate this equipment near flammable materials such as solvents, thinners, fuels, grain dust, etc.

### **AIR PRESSURE AND C.F.M. VOLUME REQUIRED**

For maximum performance, operate with requirements listed below:

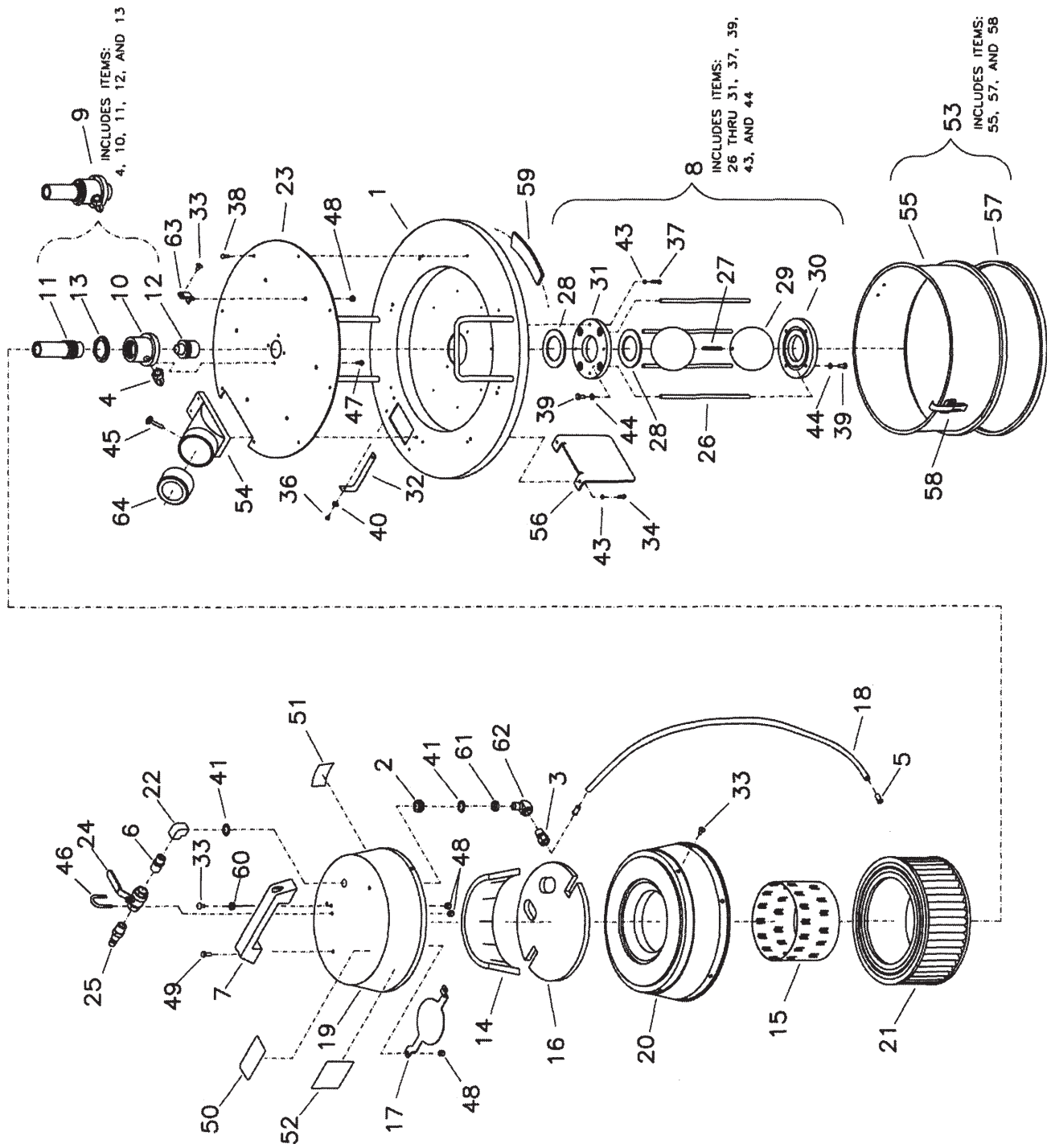
Model	Air Supply Line	Maximum Pressure	C.F.M.
705 Single Venturi	1/2"	100	46

Air pressure control valve can be regulated to operate with lower pressure and C.F.M. when maximum is not required. OPTIONAL: Air pressure regulator can be attached at air valve for positive air pressure and C.F.M. control.

## **ASSEMBLY PROCEDURE FOR MODEL 705 WET/DRY VACUUM**

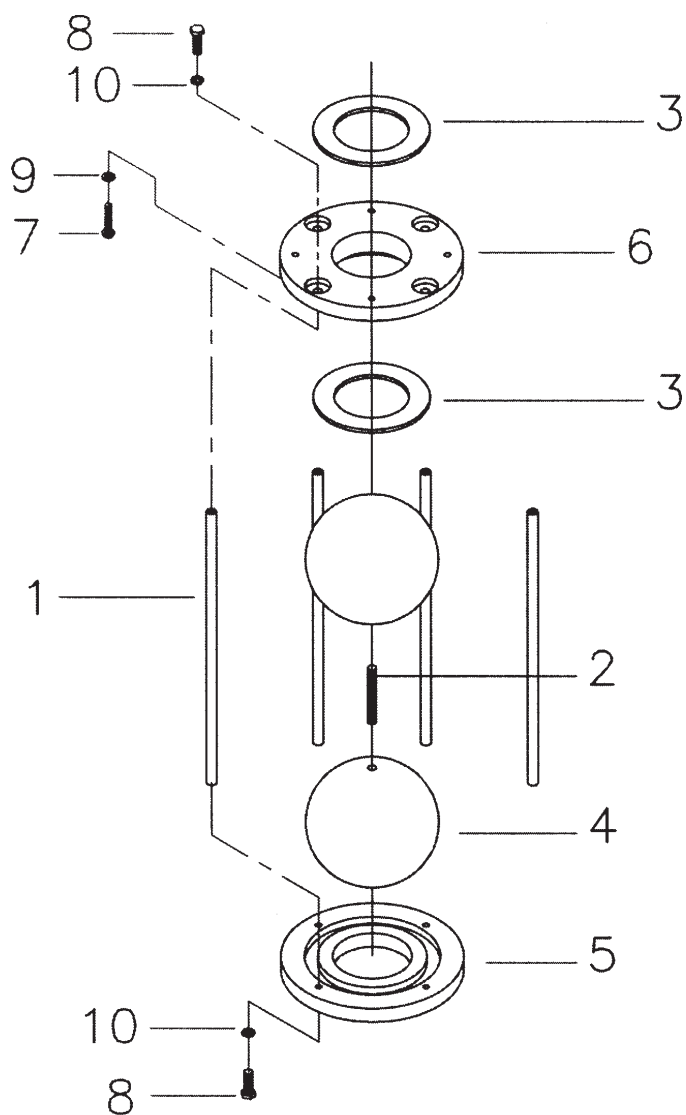
1. For wet recovery, attach float assembly #515003, page 4, to underside of vacuum lid with #710359 screw and washer #711543 provided.
2. For dry recovery, attach filter bag assembly #805047, page 5, to underside of vacuum lid. Float assembly already attached does not have to be removed. To attach filter, refer to page 8 for assembly.

Always remove the filter bag assembly when vacuum is used for wet recovery.



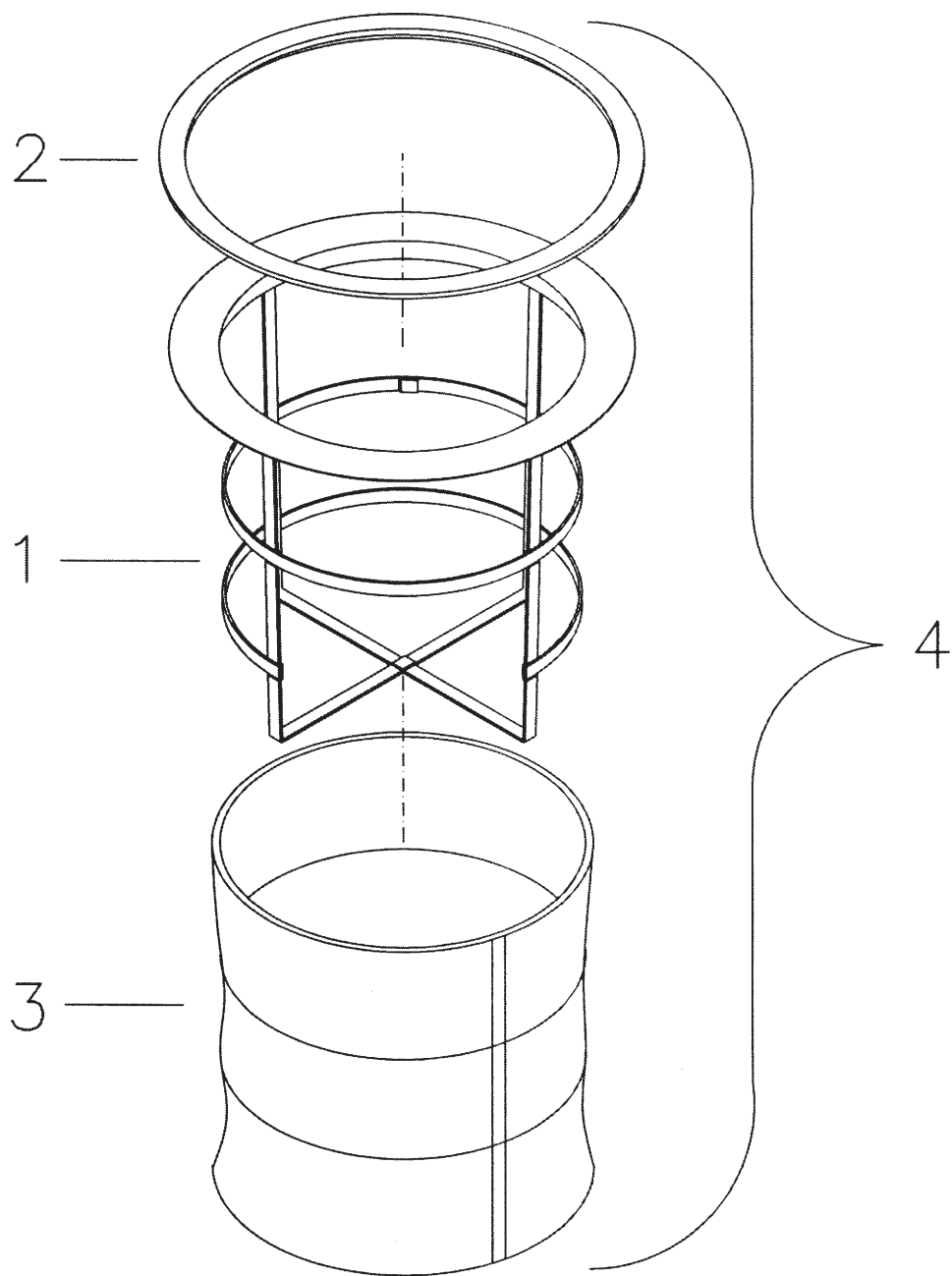
## PARTS LIST

Item	Part No	Qty	Description	Item	Part No	Qty	Description
1	252003	1	Lid Weldment w/ Handles	33	710178	10	SCR-MC TR HD 1/4-20 x .50 Zinc
2	260274	1	Grommet	34	710255	4	SCR-MC 10-32 x .62 Zinc
3	420008	1	Male Connector	35	710331	8	SCR-MC 8-32 x .75 Zinc
4	420009	1	Fitting - Elbow Male	36	710352	1	SCR-MC 10-32 x .25 Zinc
5	420011	2	Fitting - Brass Insert	37	710360	2	SCR-MC 10-32 x 1 Zinc
6	420017	1	Fitting - Hex Nipple Reducer	38	711109	8	SCR-ST-B 12 x .50 Zinc
7	460000	1	Handle 460 Lid Black	39	711203	8	BLT-HH 1/4-20 x .62
8	515003	1	50 Gal Water Shut Off	40	711503	2	WSR-Flat #10
9	700010	1	Single Venturi Assembly	41	711513	2	WSR-Flat .689 x 1.06 x .029 SS
10	700011	1	Venturi Housing	42	711542	8	WSR-Helical #8
11	700012	1	Venturi Exhaust Tube	43	711543	5	WSR-Helical #10
12	700013	1	Venturi Intake	44	711544	8	WSR-Helical 1/4
13	700014	1	Venturi Locnut	45	712016	1	SCR-Thumb 1/4-20 x 1.25 Nickel
14	700016	1	Felt Liner	46	712105	1	Bolt-U 1/4-20
15	700017	1	Perforated Shield	47	712536	4	SCR-MC 10-24 x .62 SS
16	700018	1	Dome Felt	48	712667	15	Nut-Hex Nyloc 1/4-20 SS
17	700019	1	Air Deflector	49	713002	2	BLT HH 1/4-20 x .75 #5
18	700021	1	Poly Hose 32" Long	50	715003	1	Decal, Air Pressure 2.00 x 4.00
19	700022PTD	1	Cover 701 PTD	51	715029	1	Decal, Serial Nameplate
20	700023PTD	1	Outer Housing Painted	52	715388	1	Decal - QAV
21	700026	1	Exhaust Filter	53	750326	1	Splash Shield 55G
22	700028	1	Fitting-90 3/8FPT x 3/8FPT Brass	54	760008PTD	1	Intake Painted
23	700051	1	Base Lid Cover 701	55	760033	1	Adapter Ring Manometer
24	701009	1	.50 Valve	56	760159	1	Splash Guard
25	701010	1	.50 Coupler - Male	57	760165	1	Edging 50 3/4" Long
26	701012	4	Rod, Spacer	58	761054	2	Latch
27	701013	1	Stud	59	806006MCH	1	Lid Gasket, Sealing
28	701015	2	Gasket, 2.25 x 3.50 x .12	60	81-120-A	1	Spacer .316x.626x.210
29	701016	2	Ball, Float 4" Dia	61	829285PLT	1	Spacer-.25x.875x.687 Plate
30	701041	1	Plate, End Cap Water Shut	62	830062	1	Fitting-90 3/8MPT 3/8FPT Brass
31	701042	1	Plate, End Cap Water Shut	63	832106	6	Bracket Mounting Tab
32	701204	1	Wire, Braided Ground Strap	64	900056	1	Adapter Intake



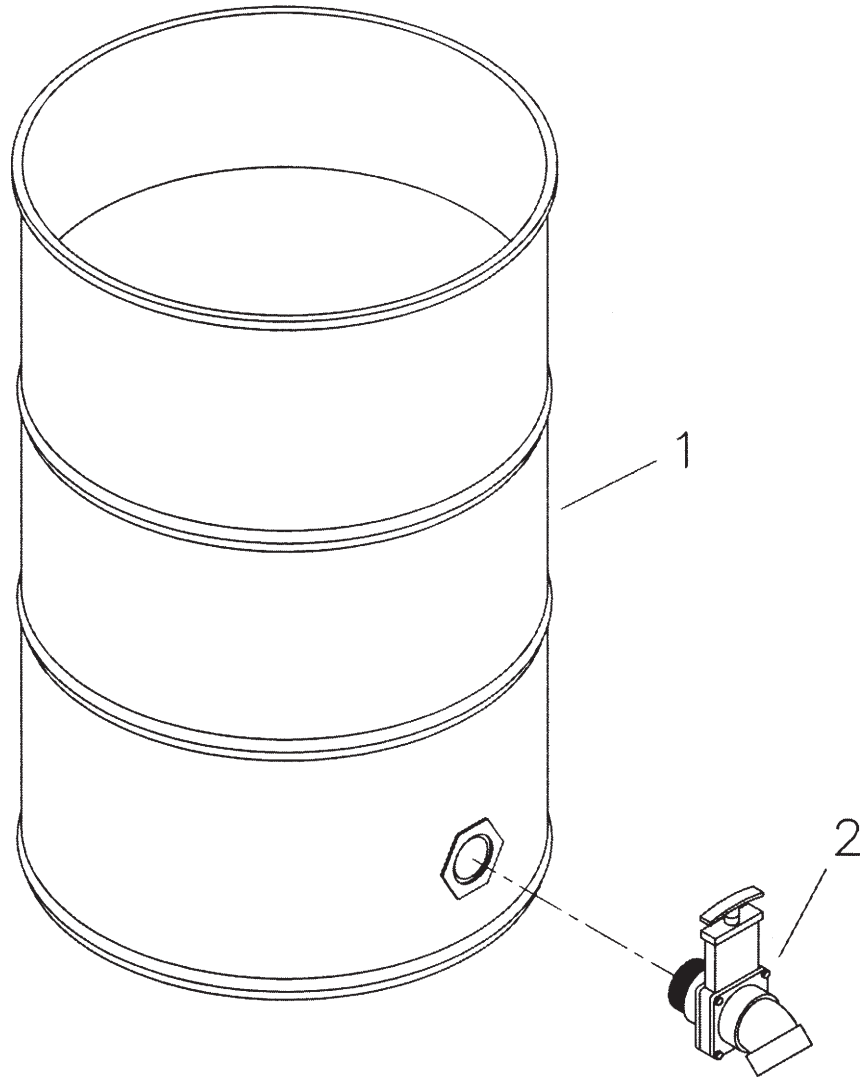
## Parts Listing

ITEM	PART NO.	QTY	DESCRIPTION
1	701012	4	Rod, spacer
2	701013	1	Stud
3	701015	2	Gasket, 2.25 x 3.50 x .12
4	701016	2	Ball, float 4 dia.
5	701041	1	Plate, end cap water shut
6	701042	1	Plate, end cap water shut
7	710360	2	SCR-MC 10-32 x 1 Zinc
9	711543	2	WSR, Helical #10
8	711203	8	BLT, HH 1/4-20 x .62
10	711544	8	WSR, Helical 1/4
****	515003		50 gal water shut off



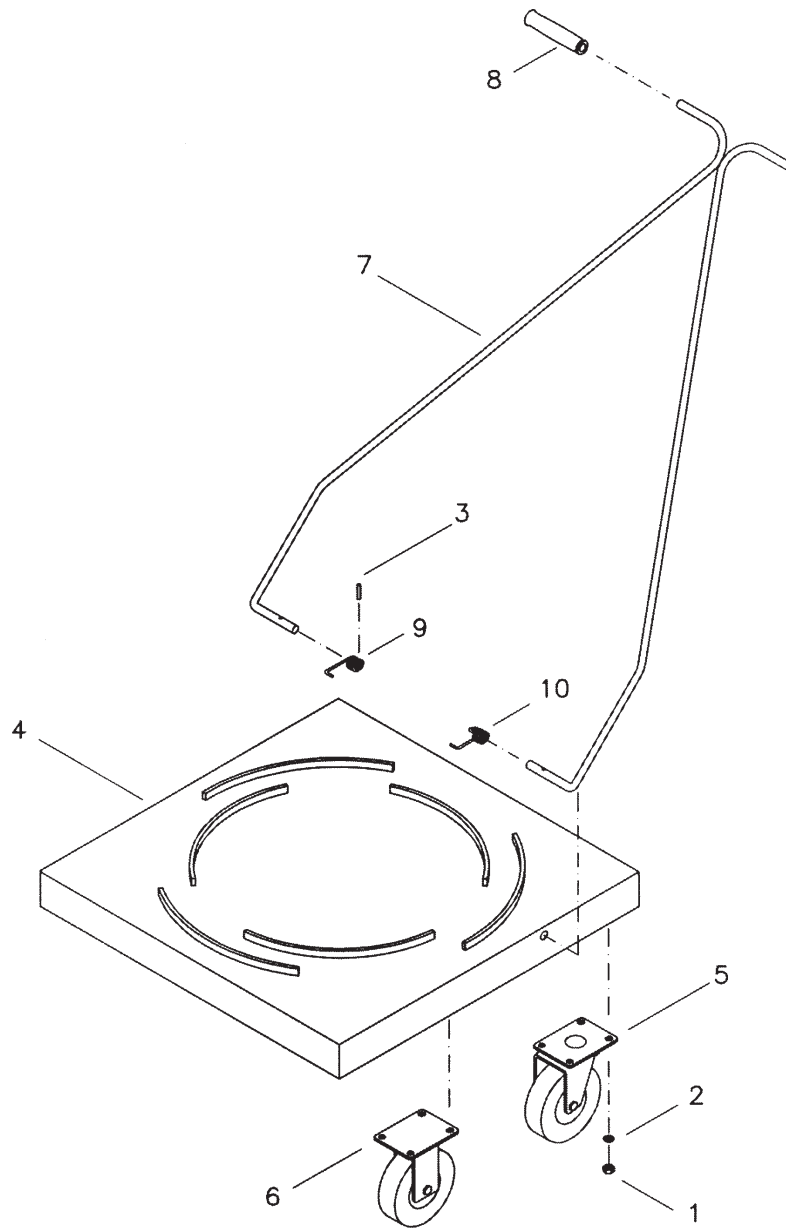
## PARTS LIST

ITEM	PART NO.	QTY	DESCRIPTION
1	500041PTD	1	Frame Bag Filter PTD
2	805018	1	Gasket, Bag Assy
3	805036	1	Bag Cloth bag only
4	805057	1	Bag assy., complete



### Parts Listing

ITEM	PART NO.	QTY	DESCRIPTION
1	900015PTD	1	Tank 55 Gal. PTD No Handles
2	900047	1	Dump Valve 30 & 55 G
***	805046PKG		Drum Liner 55 Gal., Pkg. 12



## Parts Listing

ITEM	PART NO.	QTY	DESCRIPTION
1	711319	16	Nut-Hex 5/6-18 ST PL
2	711545	16	WSR, helical 5/16
3	711642	2	Pin-Roll .187 x 1.00
4	750045	1	Weldment dolly 30/55
5	761049	2	Caster, swivel grease seal
6	761050	2	Caster, rigid 5"
7	900051	1	Weldment, handle
8	900052	2	Grip, handle
9	900080	1	Spring, torsion RH Zinc
10	900081	1	Spring, torsion LH Zinc
****	900048		Dolly cart complete



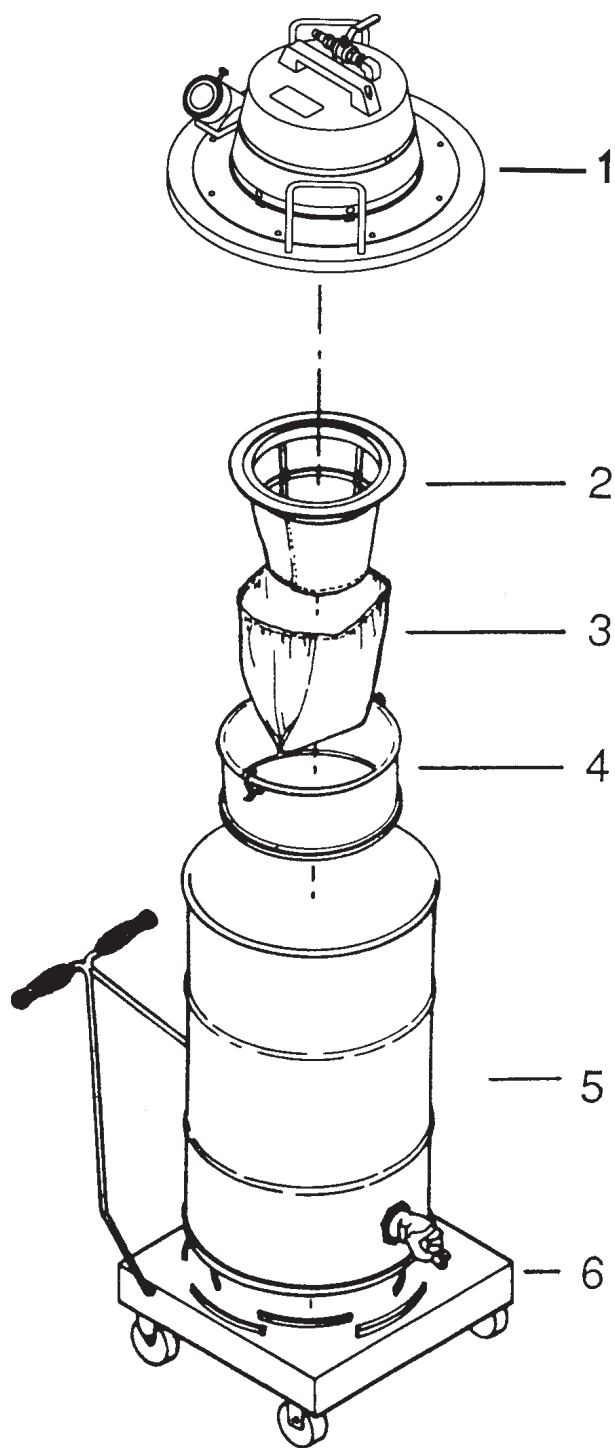


FIG. 1

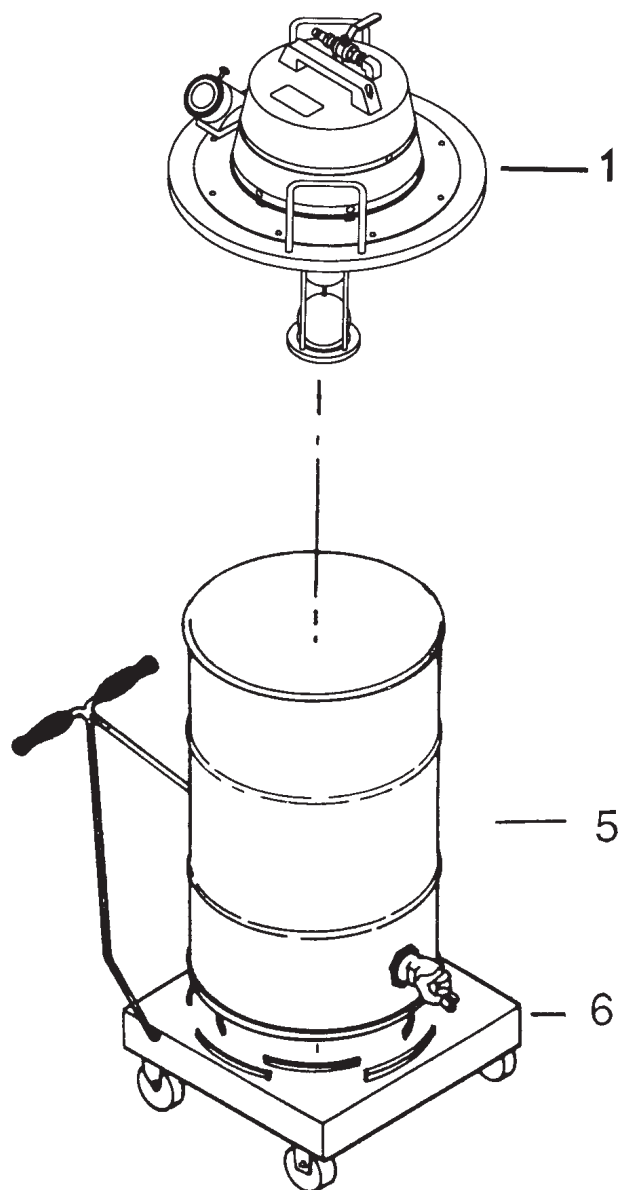

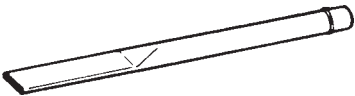





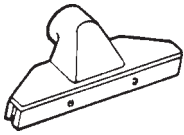
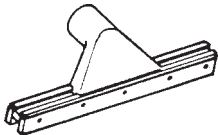
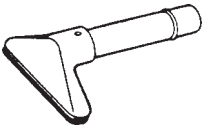
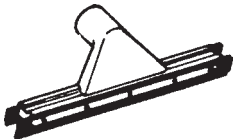


FIG. 2

# OPTIONAL INDUSTRIAL TOOLS AND ACCESSORIES

		Part No.	Description
<b>A</b>		800024	3" Rd Dust Brush Complete
		800022	5" Rd Dust Brush Complete
		800023	Bristle Insert 5"
		800175MCH	Dust Brush HSG 5"
		800176MCH	Dust Brush HSG 3"
		800025	Bristle Insert 3"
<b>B</b>		800034	24" Crev Tool Aluminum, Complete
<b>C</b>		800015	Wand Assy. 1-1/2, Complete
<b>D</b>		800017	Set Tube, High-up 10'
		800064	5' Tube Lower Section
		800019	5' Section Upper
<b>E</b>		800116	Swivel, Hose End Exp, Complete
		800016	Coupling Nylon
		800020	Hose Coupling
		711916	Rivet
<b>F</b>		801010	Hose Assy. 1-1/2 x 10'
		801014	Cuff
		801044	Hose
<b>G</b>		800032	6" Curved Pipe Tool, Complete
		711006	Set Screw
		800033	Bristle Insert Curved 6"
		800193POL	6" Curved Pipe Tool
<b>H</b>		800070	12" Gulper Tool, Complete
		710356	SCR-MC 10-32 x .65
		711503	SCR-MC 10-32 x .75
		800187PTD	Gulper Nozzle
		800217	Fibre Shoe Rear
		800218	Fibre Shoe Front
<b>I</b>		800108	14" Fibre Tool Complete
		710530	Screw 8/32 x 1/2 Brass
		800003MCH	Fibre Shod
		800178PTD	Tool Casting
<b>J</b>		800038	6" Tool w/Handle Tube, Complete
		800029	Bristle Insert Replacement
		711005	Set Screw
		800059	Bumper
		800139	Al. Tube
		800177MCH	Uphl. Nozzle
<b>K</b>		800109	14" Squeegee, Complete
		710330	SCR-SC 8-32 x .62
		800121	14" Retaining Strip
		800178PTD	Casting, Tool MCH
		800239	Blade Squeegee Wide
		800240	Blade Squeegee Narrow

# LIMITED WARRANTY

Minuteman International, Inc. warrants to the original purchaser/user that this product is free from defects in workmanship and materials under normal use and service for a period of three years from date of purchase. In addition, Minuteman International, Inc. will, at its option, honor labor warranty claims for the first 12 months from date of sale, provided such claims are submitted through and approved by factory authorized repair stations. Minuteman International, Inc. will, at its option, repair or replace without charge, except for transportation costs, parts that fail under normal use and service when operated and maintained in accordance with the applicable operation and instruction manuals.

This warranty does not apply to normal wear, or to items whose life is dependent on their use and care, such as belts, cords, switches, hoses, rubber parts, electrical motor components or adjustments. Parts not manufactured by Minuteman International, Inc. such as engines, batteries, battery chargers, hydraulic pumps, and tires are covered by and subject to the warranties and/or guarantees of their manufacturers. Please contact Minuteman International, Inc. for procedures in warranty claims against these manufacturers.

**Special warning to purchaser** — Use of replacement filters and/or prefilters not manufactured by Minuteman International, Inc. or its designated licensees, will void all warranties expressed or implied.

A potential health hazard exists without exact original equipment replacement.

All warranted items become the sole property of Minuteman International, Inc. or its original manufacturer, whichever the case may be.

Minuteman International, Inc. disclaims any implied warranty, including the warranty of merchantability and the warranty of fitness for a particular purpose. Minuteman International, Inc. assumes no responsibility for any special, incidental or consequential damages.

This limited warranty is applicable only in the U.S.A. and Canada, and is extended only to the original user/purchaser of this product. Customers outside the U.S.A. and Canada should contact their local distributor for export warranty policies. Minuteman International, Inc. is not responsible for costs or repairs performed by persons other than those specifically authorized by Minuteman International, Inc. This warranty does not apply to damage from transportation, alterations by unauthorized persons, misuse or abuse of the equipment, use of non-compatible chemicals, or damage to property, or loss of income due to malfunctions of the product.

If a difficulty develops with this machine, you should contact the dealer from whom it was purchased.

This warranty gives you specific legal rights, and you may have other rights which vary from state to state. Some states do not allow the exclusion or limitation of special, incidental or consequential damages, or limitations on how long an implied warranty lasts, so the above exclusions and limitations may not apply to you.

## ***Minuteman***<sup>®</sup>

### **World Headquarters**

Minuteman International, Inc.  
111 South Rohlwing Road  
Addison, Illinois 60101

(630) 627-6900  
FAX (630) 627-1130

Minuteman Canada, Inc.  
2210 Drew Road  
Mississauga, Ontario  
L5S 1B1

(905) 673-3222  
FAX (905) 673-5161

987707  
Printed in U.S.A.