

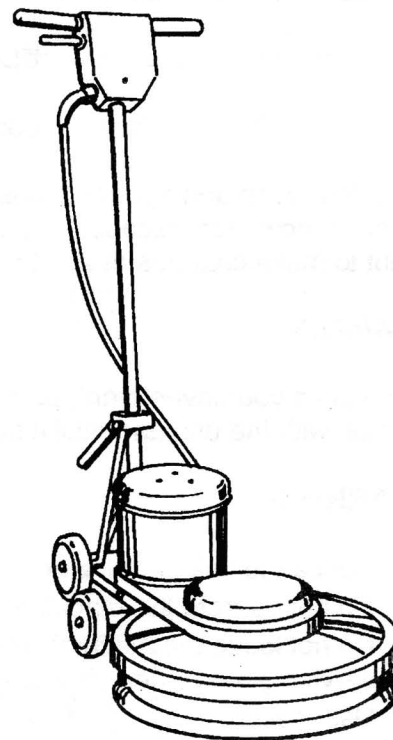
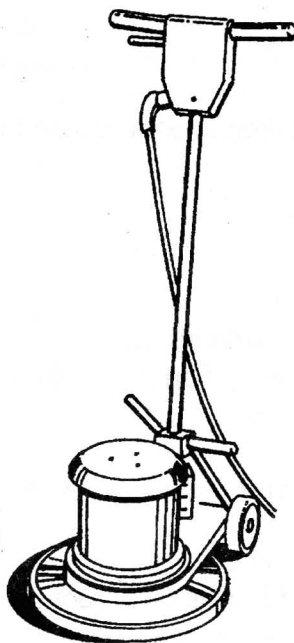
SATURN

FLOOR MACHINE & HI-SPEED BUFFER

OWNERS MANUAL & PARTS LIST

This equipment is intended for commercial use only.

13LS1
13LS1-SS
13LS2
13LS2-SS
17DS3
17LS2
17LS2-SS
17LS3
17LS3-SS
20DS3
20DS3-SS
20LS2
20LS-SS
20LS3
20LS3-SS



20HS1500
20HS1500-SS
20HS2000
20HS2000-SS

EDIC

WHEN THE MACHINE IS DELIVERED

Check the carton carefully for signs of rough handling. Remove the machine from the carton. If the machine is damaged, notify the carrier immediately and request an inspection. Be sure to keep the carton, packing inserts, packing lists and carrier's receipt until the inspector has verified your claim.

EDIC's liability ceases when the carrier picks up the shipment but our customer service staff will be glad to furnish any information needed in connection with the claim and will expedite repair of the machine.

Obtain a return authorization number from the factory before returning the machine to us for repair or service.

BEFORE OPERATING THE MACHINE

Read the manual carefully and completely before attempting to operate the unit. This manual has important information for the use and safe operation of the machine. Keep this manual handy at all times. This machine will assure years of satisfactory service if operated and maintained according to recommendations in this manual. If additional information is needed, please contact your local distributor or write to:

EDIC
1753 Blake Avenue
Los Angeles, CA 90031-1006

All information and specifications printed in the manual and parts list are current at the time of printing; however, because of EDIC's policy of continual product development, we reserve the right to make changes at any time without notice.

WARRANTY

To protect your investment, promptly fill in the required information on the warranty card that comes with the unit and mail it back to EDIC.

WARNING

To reduce the risk of fire, electric shock, or injury:

- Do not operate the machine unless trained and authorized.
- Do not leave the machine when plugged in. Unplug from the outlet when not in use, before servicing, and when changing the brushes or pads.
- Use indoors only.
- Do not allow to be used as a toy. Close attention is necessary when used by or near children.
- Do not bypass or defeat the safety "lock-out lever".
- The machine was designed for use as per instructions and recommendations written in this manual. Any deviation from its proper use or purpose and the consequential damage that may occur is the sole responsibility of the end user.
- Do not use with damaged cord or plug. If machine is not working as it should, or has been dropped, damaged, left outdoors or dropped into water, return it to an authorized service center.
- Do not pull or carry by cord, use cord as handle, close a door on cord, or pull cord around sharp edges or corners. Do not run machine over cord. Keep cord away from heated surfaces.
- Do not unplug by pulling on cord. To unplug, grasp the plug, not the cord.
- Do not handle plug or appliance with wet hands.

WARNING

- Make sure the machine is plugged into an electrical outlet with the same voltage and frequency rating as shown on the nameplate of the machine. Do not attempt to plug a 115-volt machine into a 230-volt outlet.
- Do not immerse or use this machine in standing water. Such use can cause electric shock.
- Keep the electrical supply cord from contacting the rotating brush or drive block.
- Do not expose machine to freezing temperatures.
- To avoid electric shock, do not expose the unit to rain, store it indoors only.
- Connect to a properly grounded outlet only. See "Grounding Instructions."
- Turn off all controls before unplugging.
- When using an extension cord, use only a 3 conductor grounding cord, 12 gauge wire or heavier.
- Do not put any object into openings. Do not use with any opening blocked; keep free of dust, lint, hair and anything that may reduce air flow.
- Do not operate machine in flammable or explosive areas.
- All servicing of EDIC equipment should be performed only by EDIC authorized service centers.
- Keep hair, loose clothing, fingers and all parts of body away from openings and moving parts.
- Use extra care when cleaning on stairs.
- When servicing machine, use manufacturer's supplied or approved replacement parts.

FAILURE TO COMPLY WITH THE ABOVE WARNING INSTRUCTIONS WILL VOID THE WARRANTY

GROUNDING INSTRUCTIONS

Machine must be grounded. If it should malfunction or breakdown, grounding provides a path of least resistance for electrical current to reduce the risk of electric shock. This machine is equipped with a cord having an equipment-grounding plug (See fig. 1). The plug must be plugged into an appropriate outlet that is properly installed in accordance with all local codes and ordinances. Do not remove ground pin; if missing, replace plug before use.

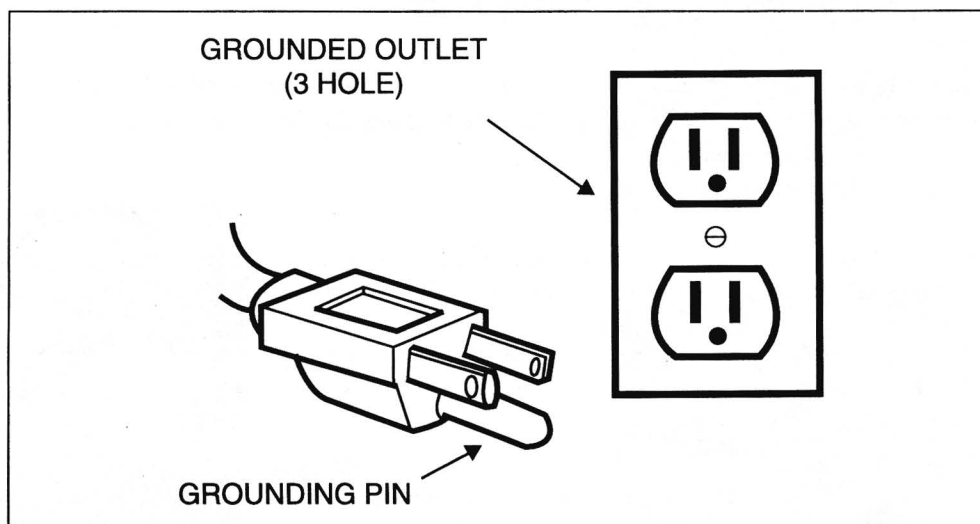
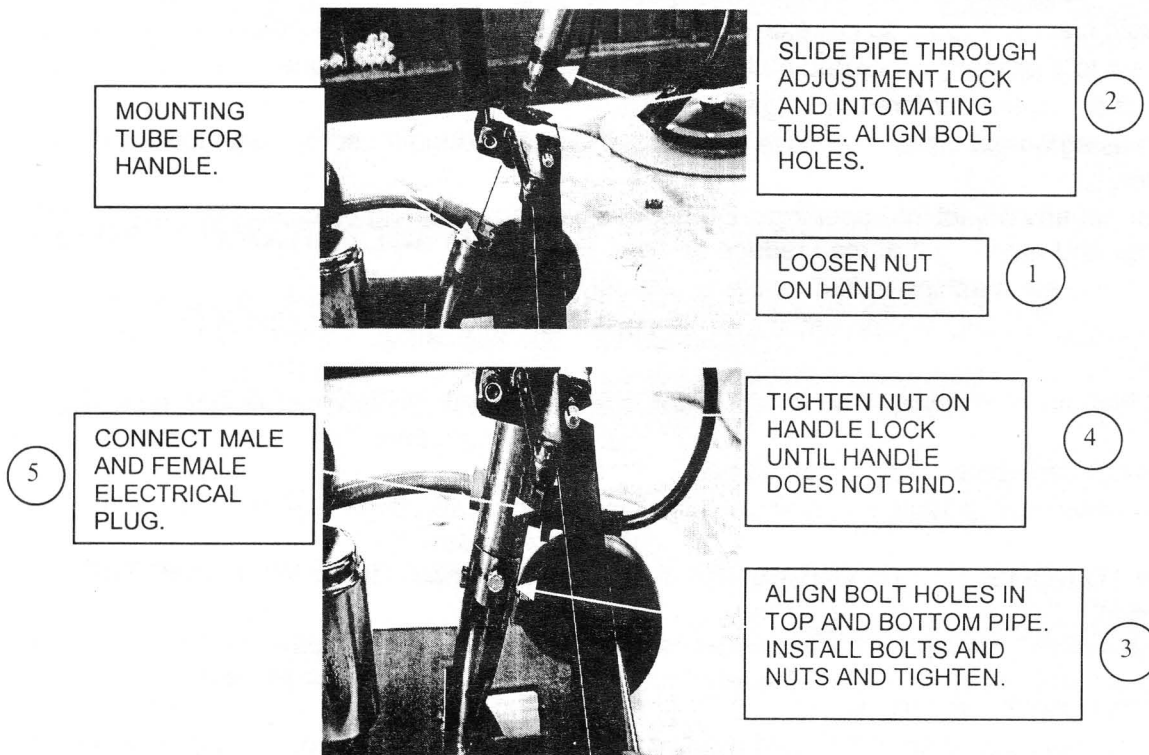


Figure 1

PREPARE THE MACHINE FOR OPERATION

Assembly Instructions:

The operator handle is packaged separately to reduce damage to cord in transport. To assemble:



Your floor machine will operate in a wide variety of hard floor & carpet cleaning applications. Consult with your local dealer or EDIC Customer Service to select the correct accessories for the job you are going to perform.

BRUSH, PAD DRIVER & PAD INSTALLATION:

WARNING: Make sure the power cord is disconnected from the electrical outlet before installing or removing the brushes, pad drivers or pads from machine.

Brush & pad driver installation:

1. Lock the handle in the upright position and tip the machine back so it rests on the handle and wheels. Fit the three slots of the clutch plate in the back of the brush or pad driver over the three lugs of the drive plate. Push it firmly into position and turn it counterclockwise until it locks in place. (Figure 2)
2. To remove: Tip the machine back so it rests on the handle and wheels. Turn the brush or pad driver clockwise until it disengages and lift off. Do not store the machine with the brush or pad drivers installed.

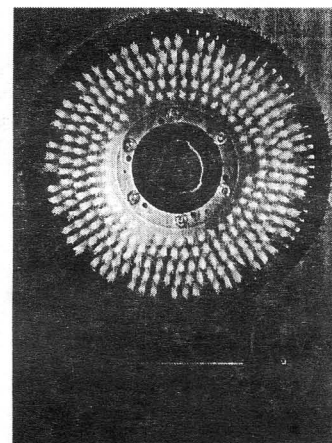


Figure 2

Pad Installation:

To install pad, tilt machine back on wheels until machine is resting on handle. Center the pad on the pad holder and insert pad center lock by twisting clockwise. Make sure the center lock is tight.

To remove: Twist the center lock, counter clockwise.

MACHINE OPERATION

1. Install the pad driver and pad, brush or attachment.
2. Plug in machine.
3. Lower the handle to the desired operating position.
4. Place both hands on the handle grips with your fingers around the on/off lever which extends from one side to the other underneath the handle grips.
5. The safety "lock-out" lever is located underneath the right side handle grip and switch lever. To unlock the "lock-out" lever use your right hand fore finger to press the lever down toward the back of the switch box. (Figure 3)
6. While still pressing the lever, pull the on/off switch lever to start the machine, then release the "lock-out" lever. The "lock-out" lever will automatically engage when you release the on/off switch lever.

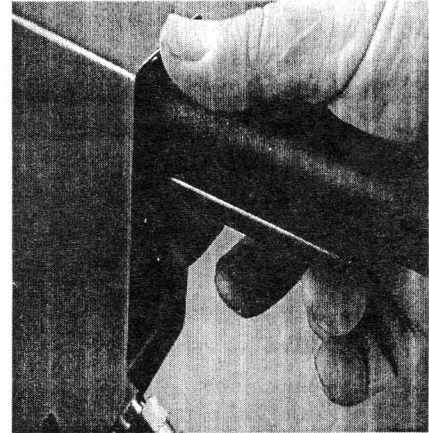


Figure 3

To maneuver your floor machine:

1. Raise handle slightly and the machine will go to the right. The higher you raise it, the faster it will go.
2. Lower the handle and the machine will go left. The more you lower it, the faster it will go.
3. Practice on a smooth surface until you gain experience in operating the unit.

To re-adjust the handle-lock mechanism:

Unlock the handle and place it in the upright position. Tighten the adjusting nuts until there is a slight drag when the handle is raised or lowered. (Figure 4)

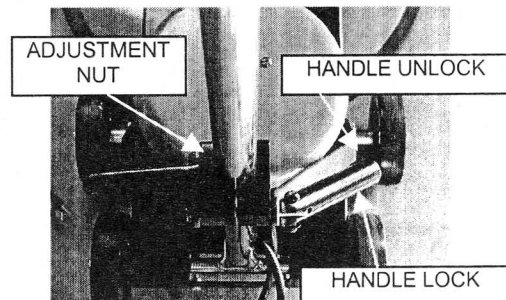


Figure 4

To adjust the drive belt: (High-speed models only 20HS1500, 20HS2000, 17HS1500)

1. Loosen, but do not remove the 4 bolts, that hold the motor to the frame. (Figure 5)
2. Tighten the 2 screws at the back of the frame until the belt is tight. Test and re-adjust the belt until the belt does not slip. Re-tighten the four motor bolts.

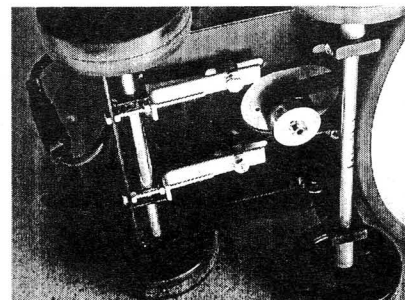


Figure 5

WARNING: Do not over-tighten the belt.

OPERATING INSTRUCTIONS for Models 17DS & 20DS Dual Speed Machines:

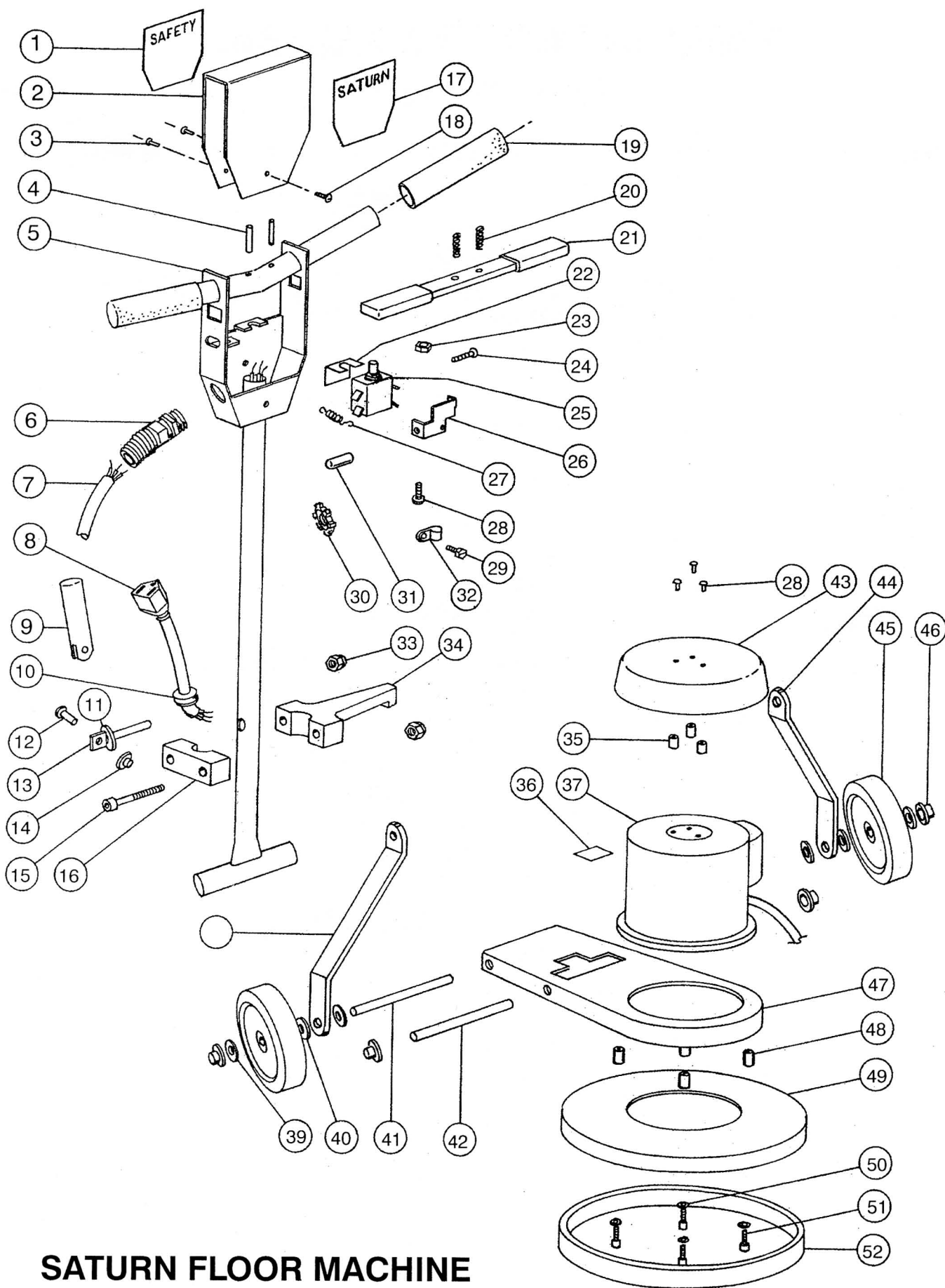
These units operate according to all instructions already described except the following:

These models can run at either 175 RPM for scrubbing or at 300 RPM for buffing. To switch the RPM's, use the rocker switch located between the motor and the base of the handle. Do not buff in the 175-RPM setting because it might overload the motor.

CLEAN UP & STORAGE:

1. Unplug the cord and wrap it under the cord hook and around the left side handle grip. Clean the cord and inspect it for cuts, gashes and loose prongs.
2. Wipe down the machine and store in a clean dry place.

WARNING: Do not store the machine with the drive block, pad driver or brush on the machine.



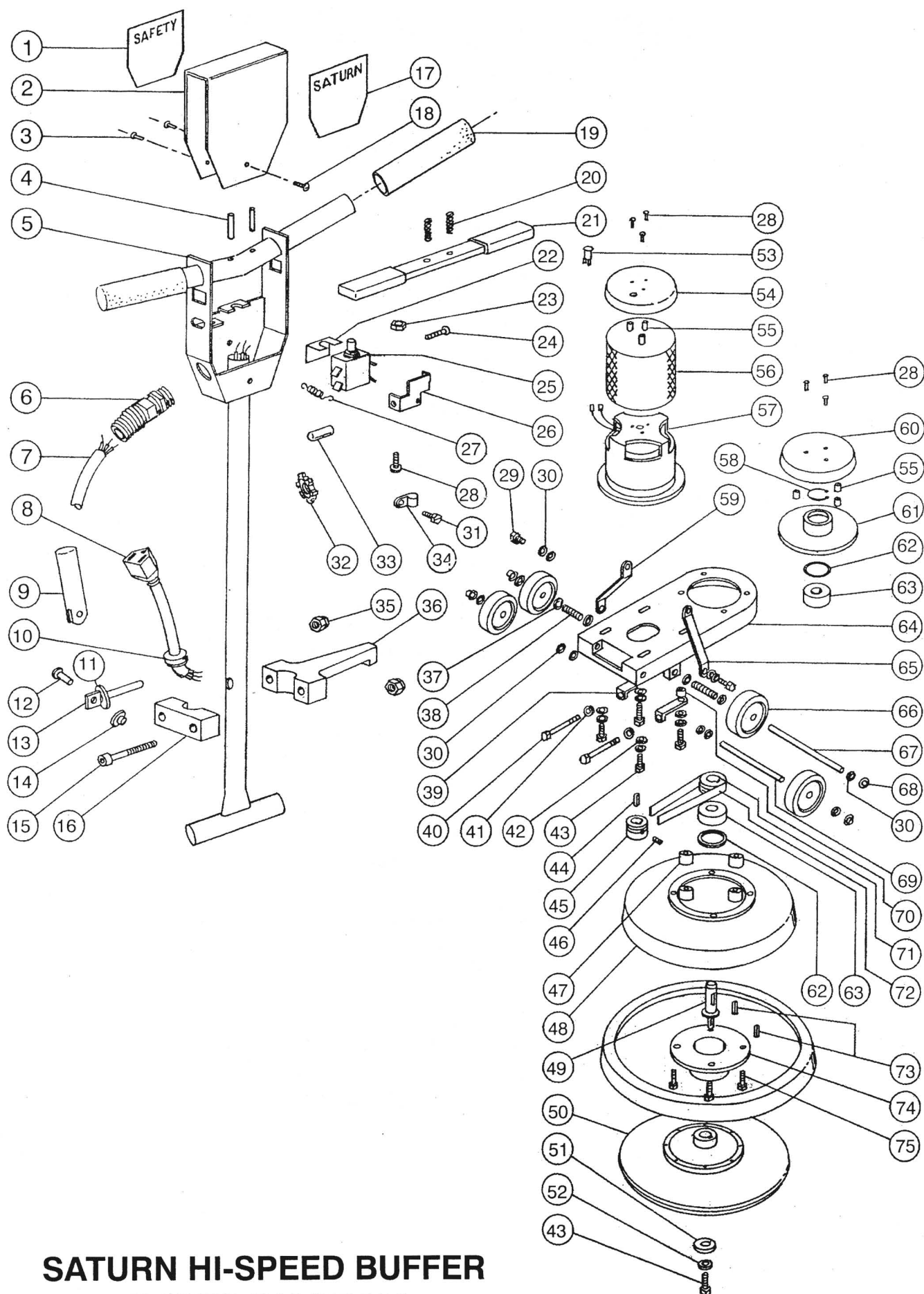
**SATURN FLOOR MACHINE
PARTS DIAGRAM**

SATURN FLOOR MACHINE PARTS LIST

ITEM #	PART #	DESCRIPTION	QTY.
1	H11493	LABEL, SAFETY	1 EA
2	D11496	SWITCHBOX COVER, BLUE	1 EA
	D11496B	SWITCHBOX COVER, BLACK	1 EA
3	C11529	SCREW, 10-32 X 3/8	2 EA
4	C00306	ROLLPIN	2 EA
5	D11479	HANDLE	1 EA
6	B11504	STRAIN RELIEF	1 EA
7	B11487	POWER CORD	1 EA
8	B11513	HANDLE CORD	1 EA
9	D11497	LOCKING HANDLE	1 EA
10	B10734	STRAIN RELIEF	1 EA
11	C00259	SLOTTED WASHER	1 EA
12	C11537	HANDLE RETAINER PIN	1 EA
13	C11536	SPADE BOLT, 3/8-16 X 4	1 EA
14	C11538	CAPNUT, 5/16	1 EA
15	C11502	SOCKET CAP SCREW, 3/8-16 X 2 1/2	1 EA
16	D11507-2	CORD HOOK CLAMP	1 EA
17	H11492	LABEL, SATURN	1 EA
18	C11528	SCREW, 10-32 X 1/4	1 EA
19	K11498	HANDLE GRIP	2 EA
20	D11523	TRIGGER SPRING	2 EA
21	K11520	LEVER GRIP, TRIGGER	1 EA
22	B11518	SWITCH INSULATION	1 EA
23	C00264	HEX NUT, 10-32	1 EA
24	C11491	SCREW, 10-32 X 1	1 EA
25	B11465-1	SWITCH, SPST,PUSHBUTTON	1 EA
26	D11494	LOCKOUT BRACKET	1 EA
27	D11524	LOCKOUT SPRING	1 EA
28	C90007	SCREW, 10-32 X 5/8	4 EA

SATURN FLOOR MACHINE PARTS LIST

ITEM #	PART #	DESCRIPTION	QTY.
29	C00284	SCREW, 10-32 X 3/8 (GROUND)	1 EA
30	B11505	STRAIN RELIEF NUT	1 EA
31	K11520	LEVER GRIP, LOCKOUT	1 EA
32	B00187	CABLE CLAMP	1 EA
33	C11558	LOCKNUT, 3/8-16	2 EA
34	D11507	CORD HOOK BODY	1 EA
35	K11517	DRIPCOVER SPACER	3 EA
36	H00565-5	SERIAL NUMBER LABEL	1 EA
37	G11466	MOTOR W/GEARBOX 1/2 HP	1 EA
	G11467	MOTOR W/GEARBOX 1 HP	1 EA
	G11468	MOTOR W/GEARBOX 1 1/2 HP	1 EA
	G11573	MOTOR W/GEARBOX DUAL SPEED	1 EA
38	D11481	HANDLE BRACE, LEFT	1 EA
39	C11559	WASHER, .515 X .875 X .032	4 EA
40	C00240	SHOULDER WASHER	2 EA
41	D11509	AXLE, WHEEL	1 EA
42	D11510	AXLE, HANDLE	1 EA
43	D11490	DRIPCOVER, BLUE	1 EA
	D11490C	DRIPCOVER, CHROME	1 EA
44	D11482	HANDLE BRACE, RIGHT	1 EA
45	G11489	WHEEL, 5"	2 EA
46	C02305	CAPNUT, 1/2"	4 EA
47	D11483	MOTOR FRAME	1 EA
48	K11521	SPACER, BASE	3 EA
49	D11484	BRUSHCOVER, 13"	1 EA
	D11485	BRUSHCOVER, 17"	1 EA
	D11486	BRUSHCOVER, 20"	1 EA
	D11484-SS	BRUSHCOVER, 13", STAINLESS	1 EA
	D11485-SS	BRUSHCOVER, 17", STAINLESS	1 EA
	D11486-SS	BRUSHCOVER, 20", STAINLESS	1 EA
50	C00251	LOCKWASHER, 5/16, SPLIT	4 EA
51	C11501	SOCKET CAP SCREW, 5/16-18 X 2	4 EA
52	E11476	BUMPER, 13"	1 EA
	E11477	BUMPER, 17"	1 EA
	E11478	BUMPER, 20"	1 EA
NOT SHOWN	D11582	SWITCH BRACKET (DUAL SPEED ONLY)	1 EA
NOT SHOWN	B00188	SWITCH, ROCKER (DUAL SPEED ONLY)	1 EA



**SATURN HI-SPEED BUFFER
PARTS DIAGRAM**

SATURN HI-SPEED BUFFER

PARTS LIST

ITEM #	PART #	DESCRIPTION	QTY.
1	H11493	LABEL, SAFETY	1 EA
2	D11496	SWITCHBOX COVER, BLUE	1 EA
	D11496B	SWITCHBOX COVER, BLACK	1 EA
3	C11529	SCREW, 10-32 X 3/8	2 EA
4	C00306	ROLLPIN	2 EA
5	D11479	HANDLE	1 EA
6	B11504	STRAIN RELIEF	1 EA
7	B11487	POWER CORD	1 EA
8	B11513	HANDLE CORD	1 EA
9	D11497	LOCKING HANDLE	1 EA
10	B10734	STRAIN RELIEF	1 EA
11	C00259	SLOTTED WASHER	1 EA
12	C11537	HANDLE RETAINER PIN	1 EA
13	C11536	SPADE BOLT, 3/8-16 X 4	1 EA
14	C11538	CAPNUT, 5/16	1 EA
15	C11502	SOCKET CAP SCREW, 3/8-16 X 2 1/2	1 EA
16	D11507-2	CORD HOOK CLAMP	1 EA
17	H11492	LABEL, SATURN	1 EA
18	C11528	SCREW, 10-32 X 1/4	1 EA
19	K11498	HANDLE GRIP	2 EA
20	D11523	TRIGGER SPRING	2 EA
21	K11520	LEVER GRIP, TRIGGER	1 EA
22	B11518	SWITCH INSULATION	1 EA
23	C00264	HEX NUT, 10-32	1 EA
24	C11491	SCREW, 10-32 X 1	1 EA
25	B11465-1	SWITCH, SPST,PUSHBUTTON	1 EA
26	D11494	LOCKOUT BRACKET	1 EA
27	D11524	LOCKOUT SPRING	1 EA
28	C90007	SCREW, 10-32 X 5/8	7 EA
29	C11569	HEX TAP BOLT, 3/8 X 1 1/4"	4 EA
30	C00252	WASHER, 3/8"ID	8 EA
31	C00284	SCREW, 10-32 X 3/8 (GROUND)	1 EA
32	B11505	STRAIN RELIEF NUT	1 EA
33	K11520	LEVER GRIP, LOCKOUT	1 EA
34	B00187	CABLE CLAMP	1 EA
35	C11558	LOCKNUT, 3/8-16	4 EA
36	D11507	CORD HOOK BODY	1 EA
37	C11559	WASHER, .515 X .872 X .032	10 EA
38	K11561	SPACER, 1/2ID X 1/4	14 EA

SATURN HI-SPEED BUFFER

PARTS LIST

ITEM #	PART #	DESCRIPTION	QTY.
39	D11542	TENSION ADJUSTMENT BRACKET	2 EA
40	C00319	HEX TAP BOLT, 1/4-20 X 3 1/2	2 EA
41	C00261	HEX NUT, 1/4-20	4 EA
42	C00250	LOCKWASHER, 3/8", SPLIT	5 EA
43	C11571	HEX TAP BOLT, 3/8 X 3/4"	3 EA
44	C11555	KEY, MOTOR	1 EA
45	D11532	PULLEY, 2"	1 EA
46	C11567	SET SCREW, 5/16	3 EA
47	K11521	SPACER, BASE	4 EA
48	D11486	BRUSHCOVER, 20"	1 EA
	D11486-SS	BRUSHCOVER, 20", STAINLESS	1 EA
49	D11534	SHAFT, 4.11"	1 EA
50	2004BR	PAD HOLDER, 20", HIGH SPEED	1 EA
51	D11535	WASHER, 1.75", STEEL	1 EA
52	C00251	LOCKWASHER, 5/16", SPLIT	4 EA
53	B02196	LIGHT, MOTOR CARBON BRUSH WEAR	1 EA
54	D11490	DRIP COVER, BLUE	1 EA
	D11490C	DRIP COVER, CHROME	1 EA
55	K11517	SPACER, 3/16"ID	6 EA
56	D11545	MOTOR SCREEN	1 EA
57	G11557	MOTOR, HIGH SPEED	1 EA
58	C11574	RETAINING RING	1 EA
59	D11544	HANDLE BRACE, RIGHT	1 EA
60	D11490B	DRIP COVER, BLACK	1 EA
	D11490C	DRIP COVER, CHROME	1 EA
61	D11565	BEARING PLATE, UPPER	1 EA
62	C11556	WAVE WASHER	2 EA
63	G11531	BEARING	2 EA
64	D11526	FRAME, MOTOR	1 EA
65	D11543	HANDLE BRACE, LEFT	1 EA
66	G11489	WHEEL, 5"	4 EA
67	D11562	AXLE, WHEEL	1 EA
68	C02305	CAP NUT, 1/2", PUSHON	4 EA
69	D11563	AXLE, HANDLE	1 EA
70	K00662-50	SPACER, 1/2"	2 EA
71	D11547	PULLEY, 3 7/8", (1500RPM)	1 EA
	D11533	PULLEY, 3 1/8", (2000RPM)	1 EA
72	L11530	BELT	1 EA
73	C11555	KEY, 3/16	2 EA
74	D11566	BEARING PLATE, LOWER	1 EA
75	C11568	HEX BOLT, 5/16-18 X 2 1/2"	4 EA