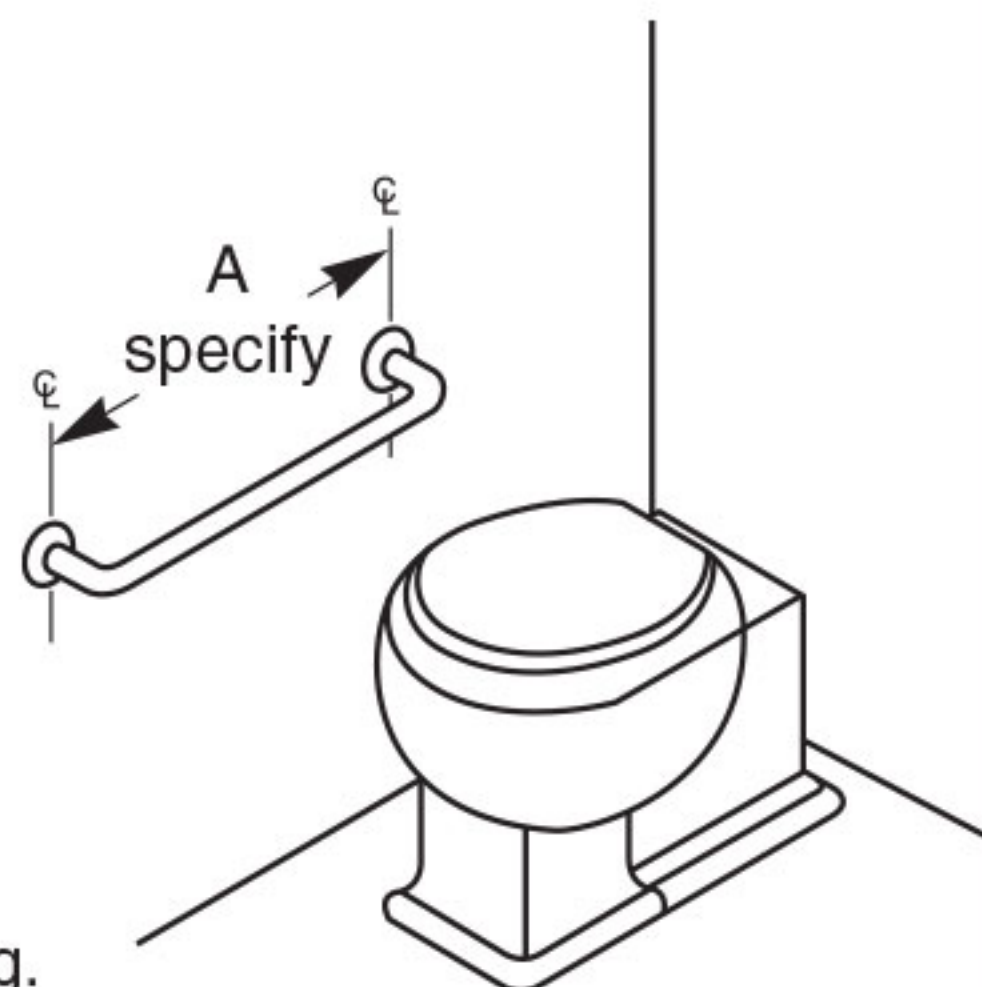


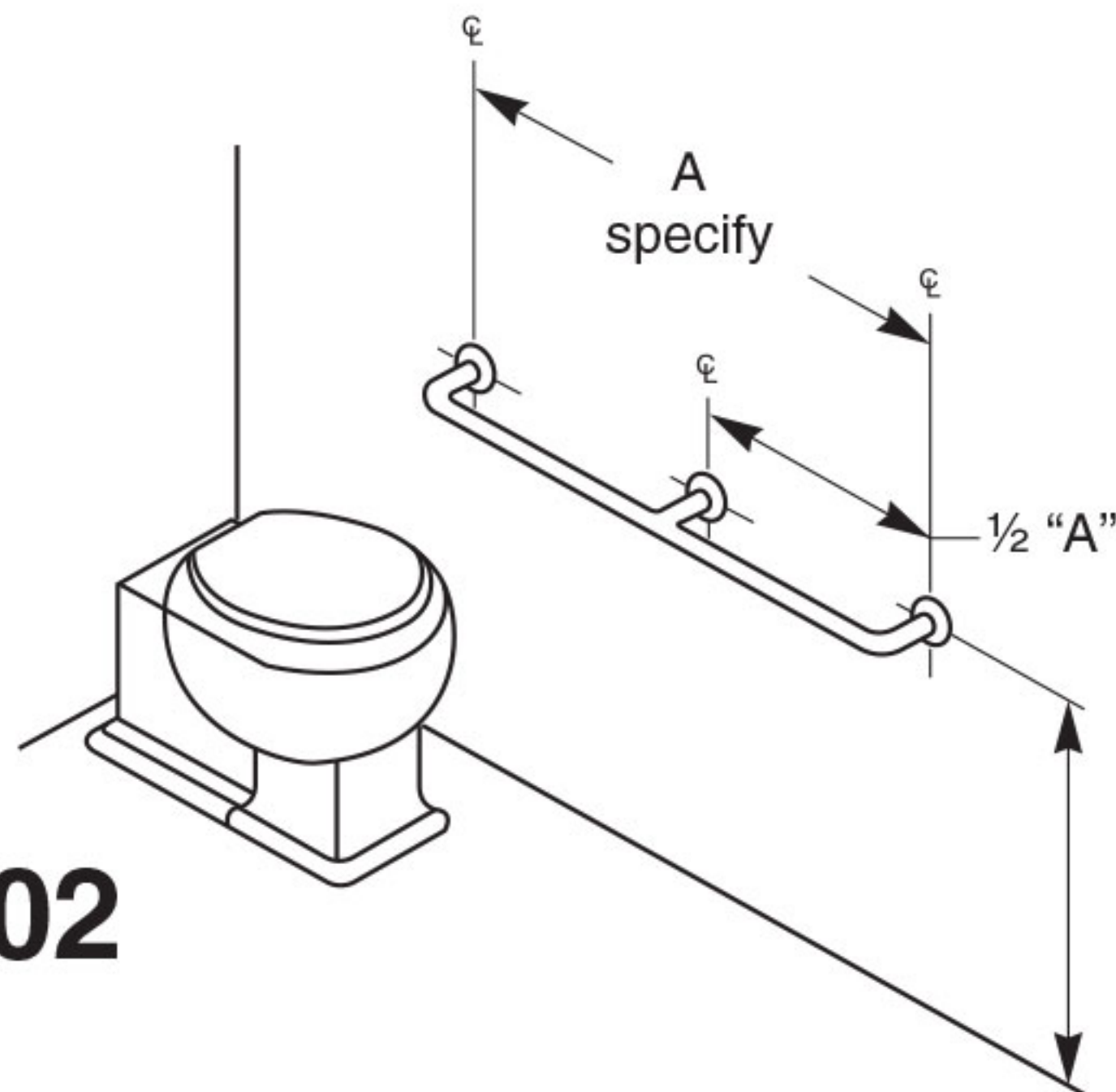
Typical Water Closet Applications:

001

Specify length desired. See **048** and **049** for 45° mounting. **001** over 54" requires a center support and becomes **002**.

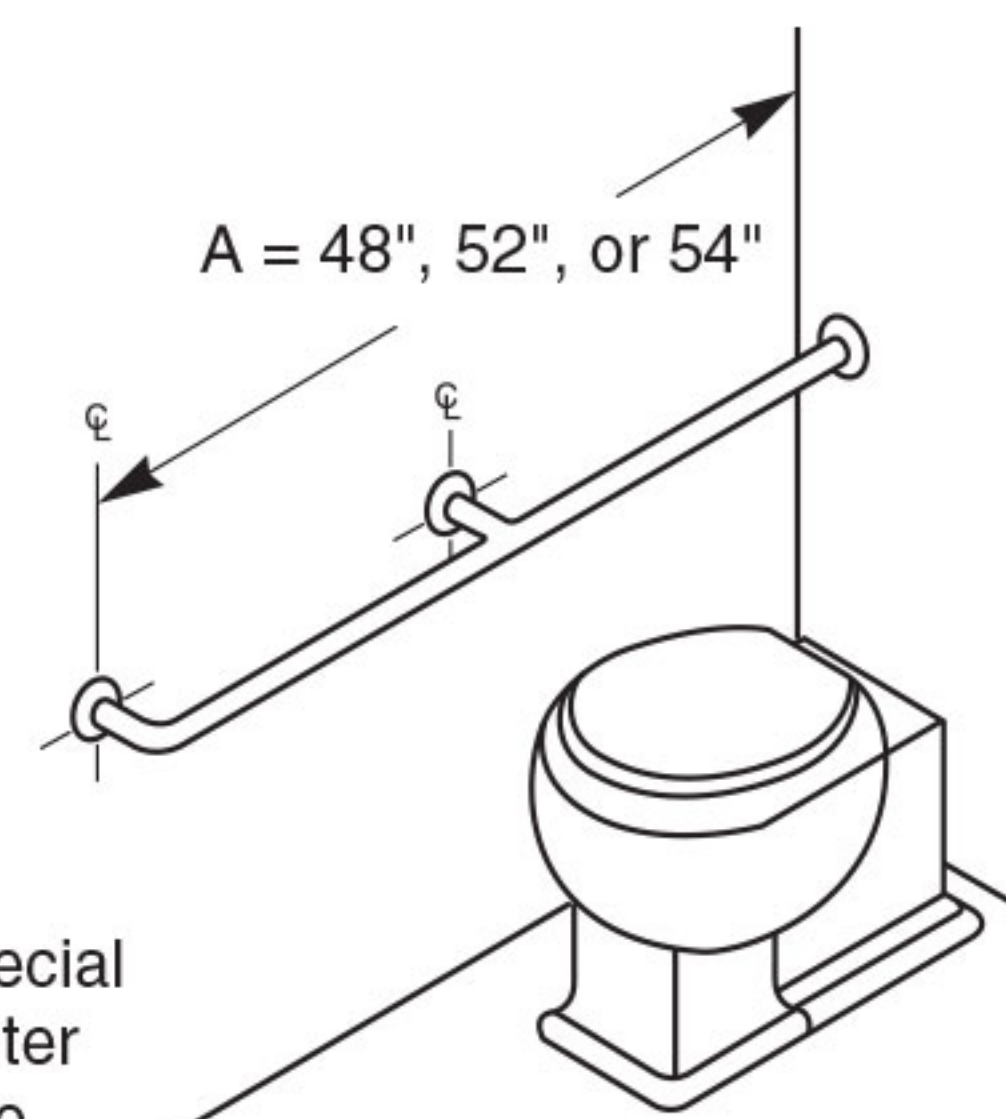


002

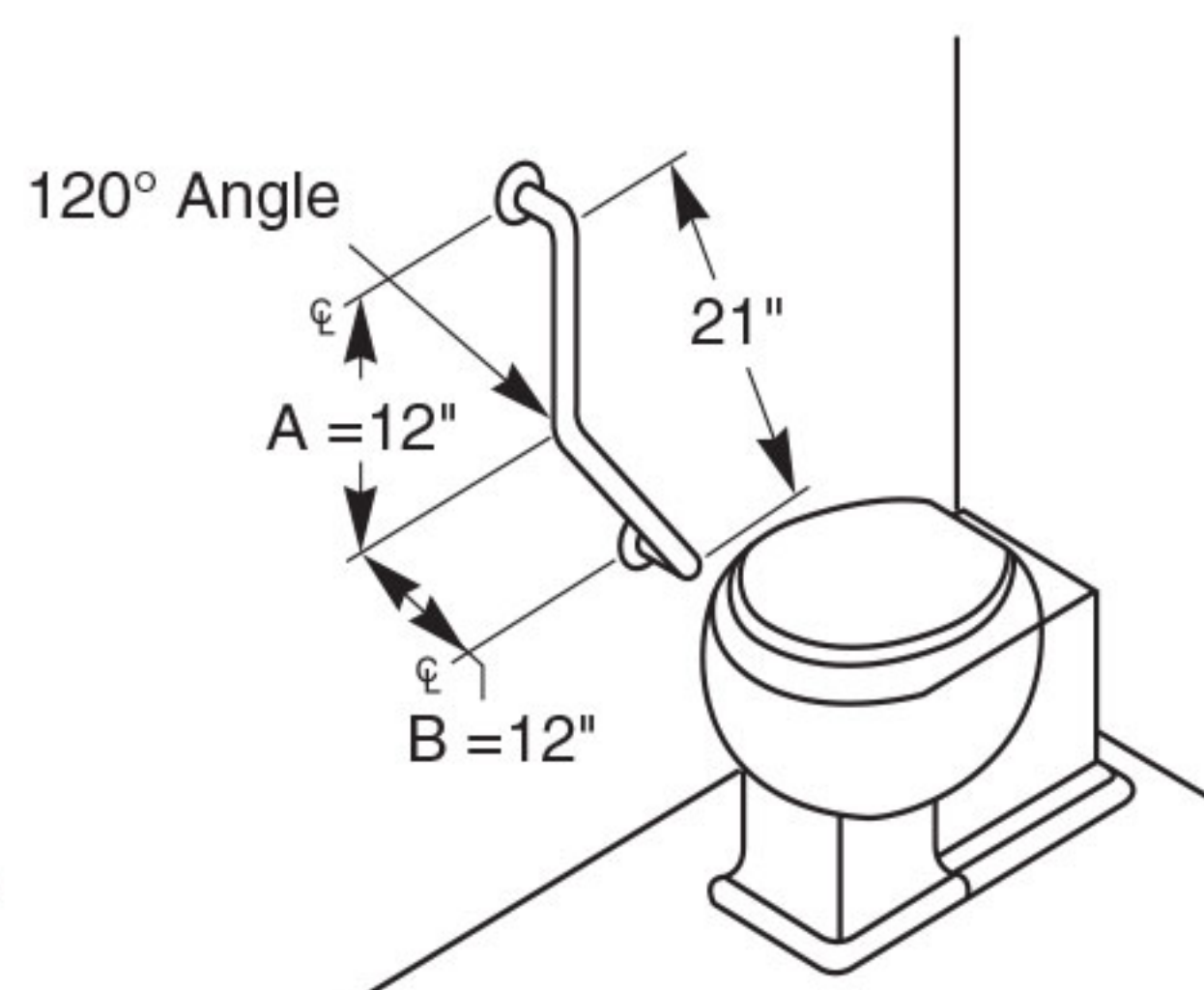


003

Only one end return. Special size "A" dimensions; center post will only be added to models greater than 24".

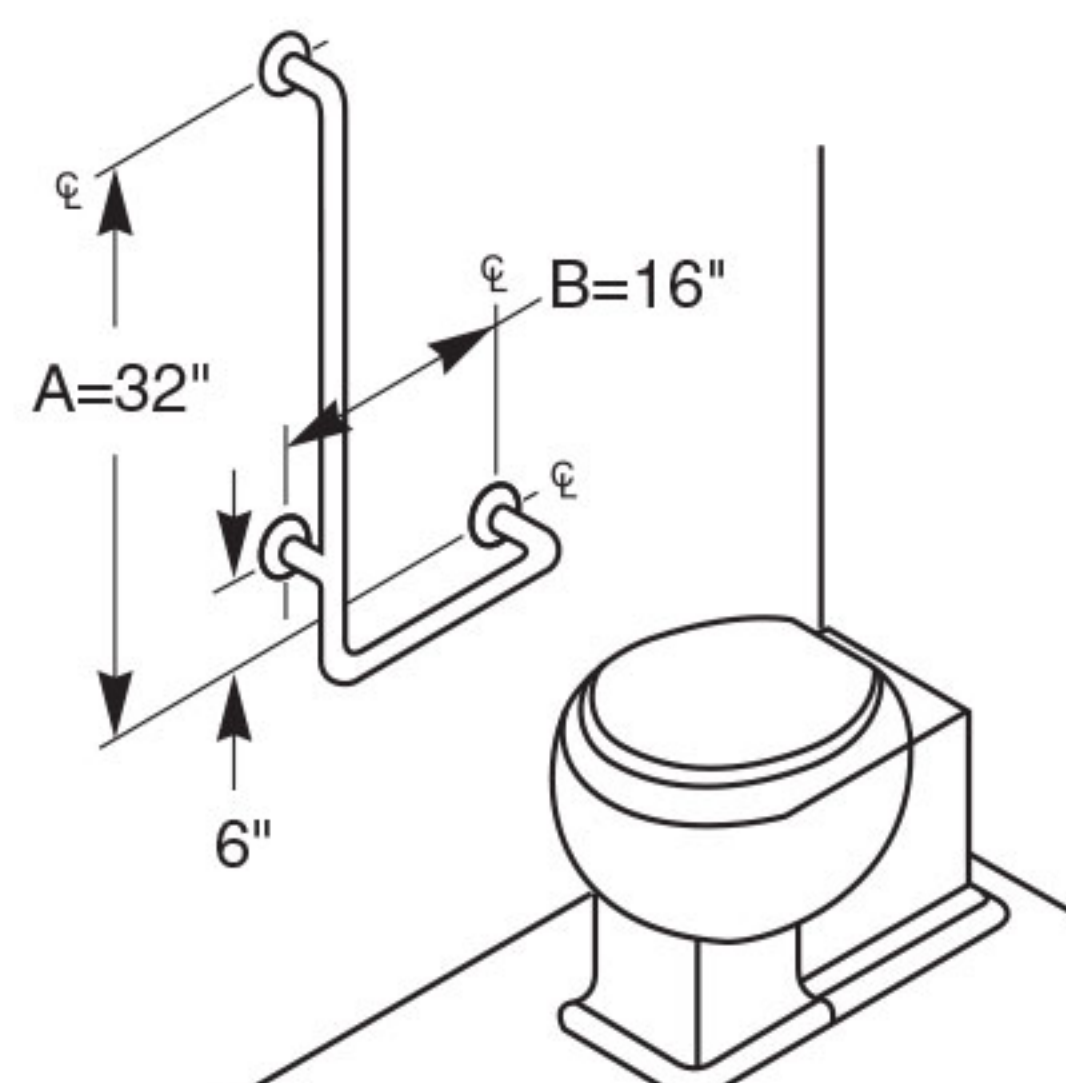


004



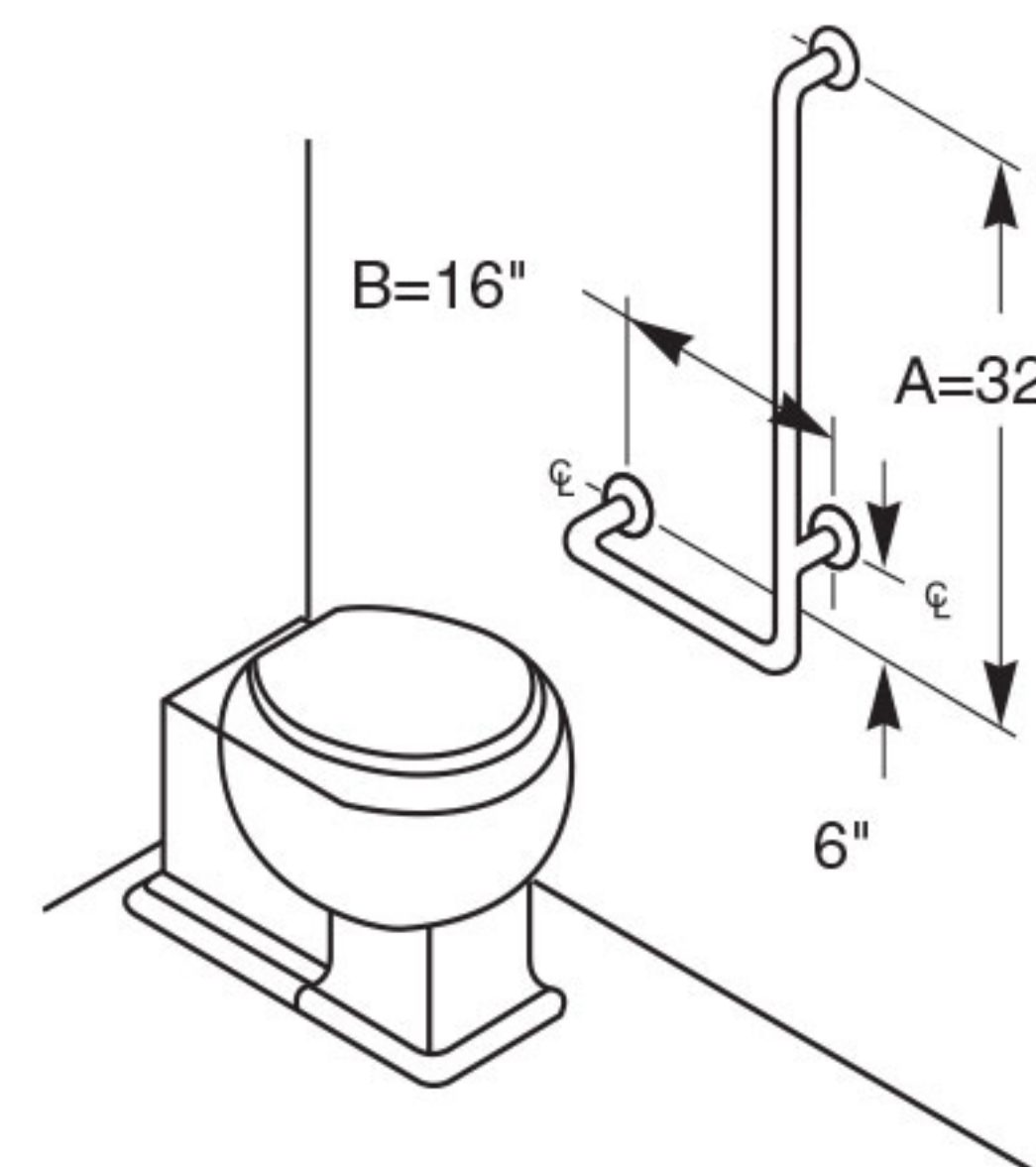
005

"A" dimension will always have stand-off (LF).



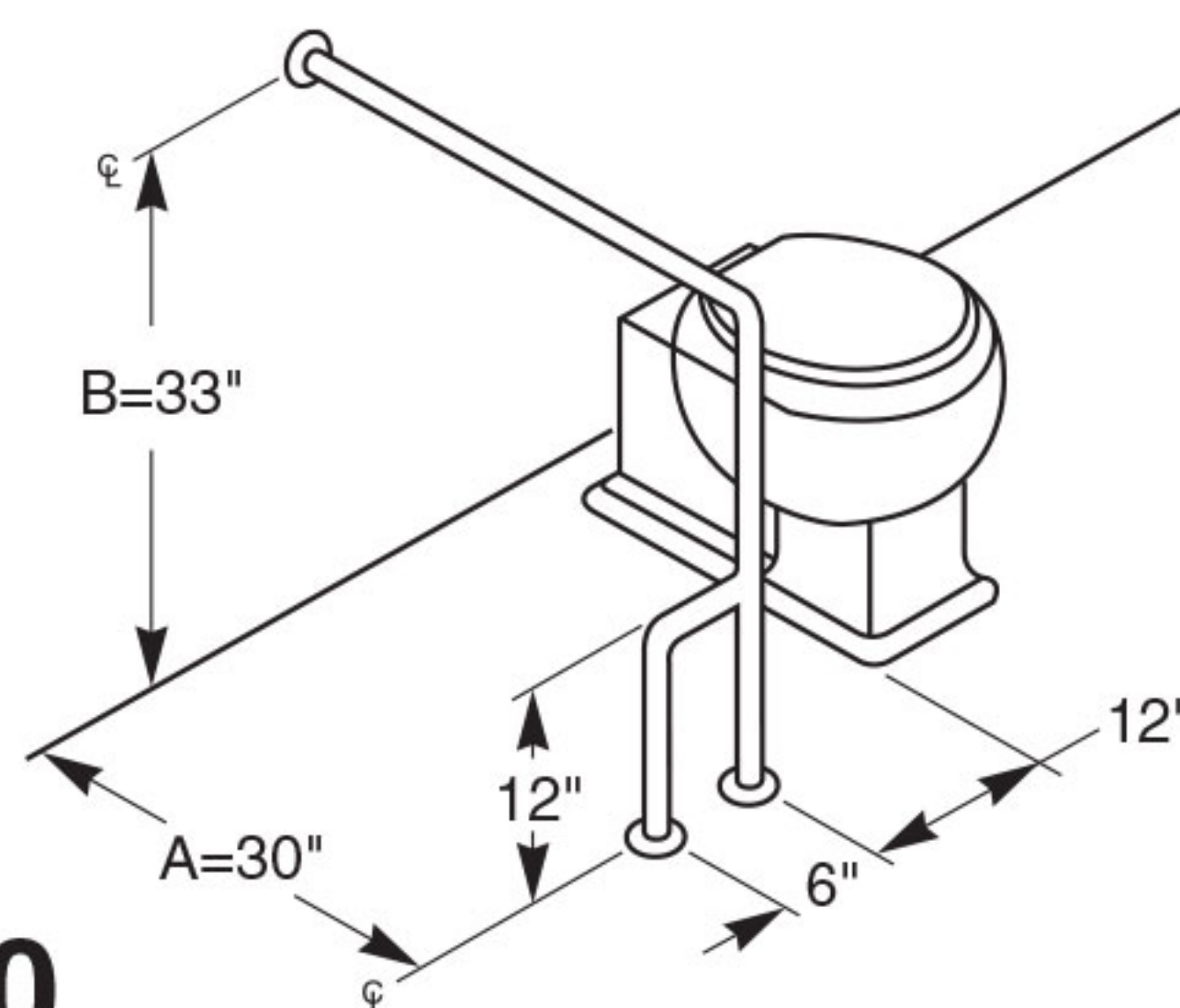
006

Opposite **005**. "A" dimension will always have stand-off (RH).



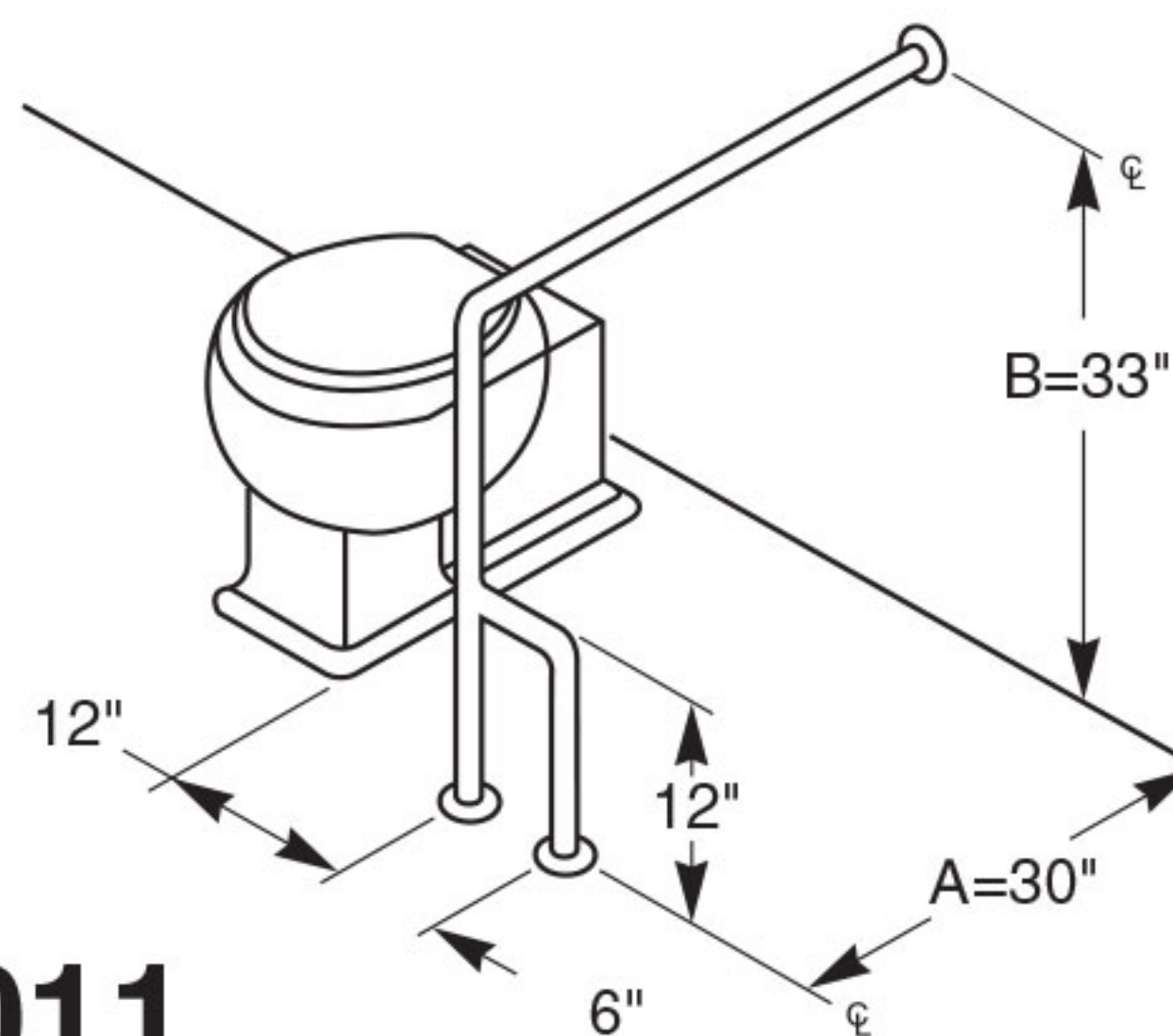
010

(LH)



011

Opposite **010** (RH)



ADA Compliant

- ☒ Consult local and national accessibility codes for proper installation guidelines.
- ☒ Conformity and compliance to local and national codes is the responsibility of the installer.

NOTE: When Grab Bar dimensions are modified, a support will be added to all sections longer than 54".

Typical Water Closet Applications:

012

Confirm clearance between fixture or plumbing and grab bar in individual applications.

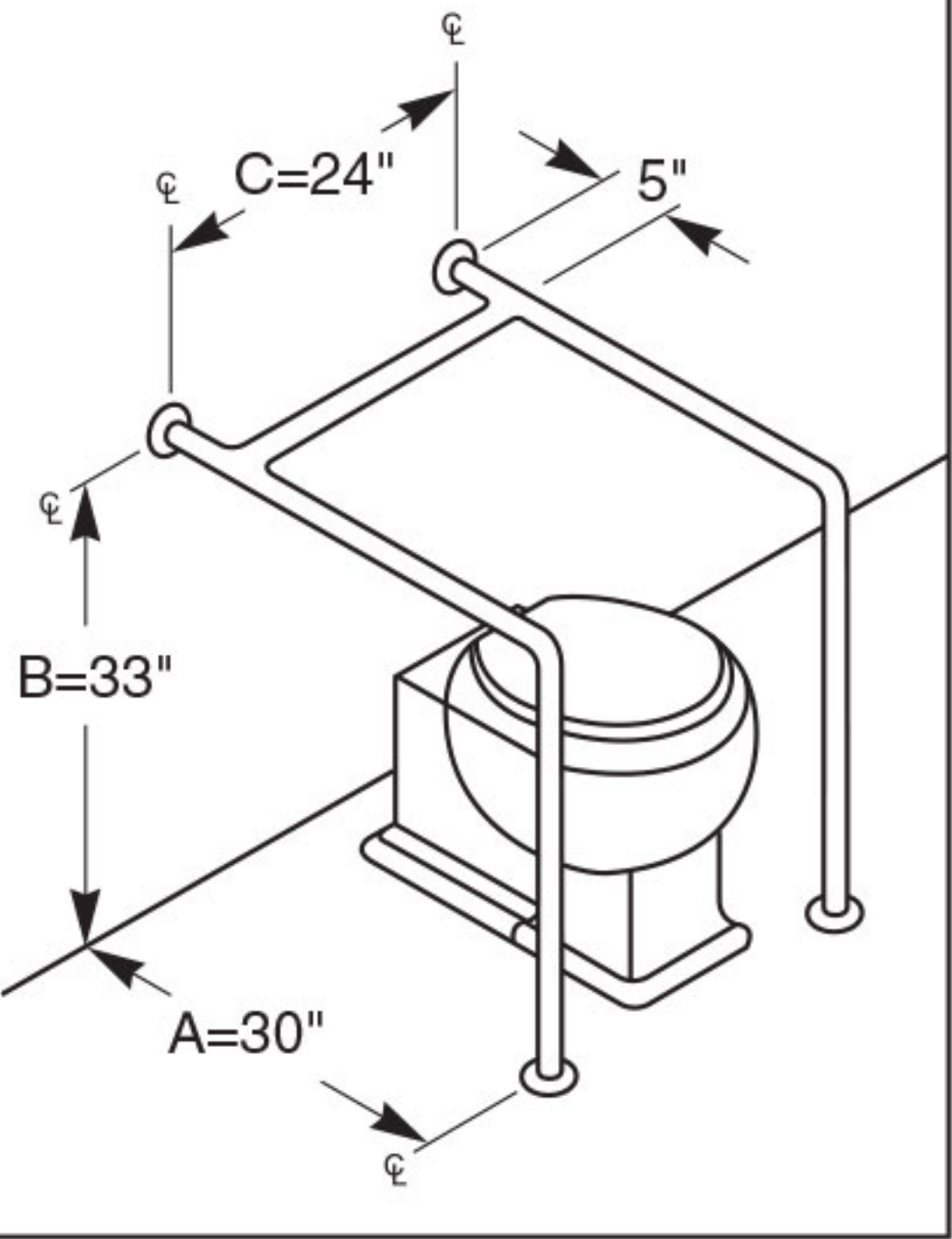


Diagram showing the installation of a grab bar (012) over a toilet. The bar is mounted on the wall. Dimensions: A=30", B=33", C=24", and a 5" offset from the toilet bowl.

039

Bar slides to accommodate various size water closets. Flat bar 2" wide x 1/8" thick, 11 gage, bolts to toilet.

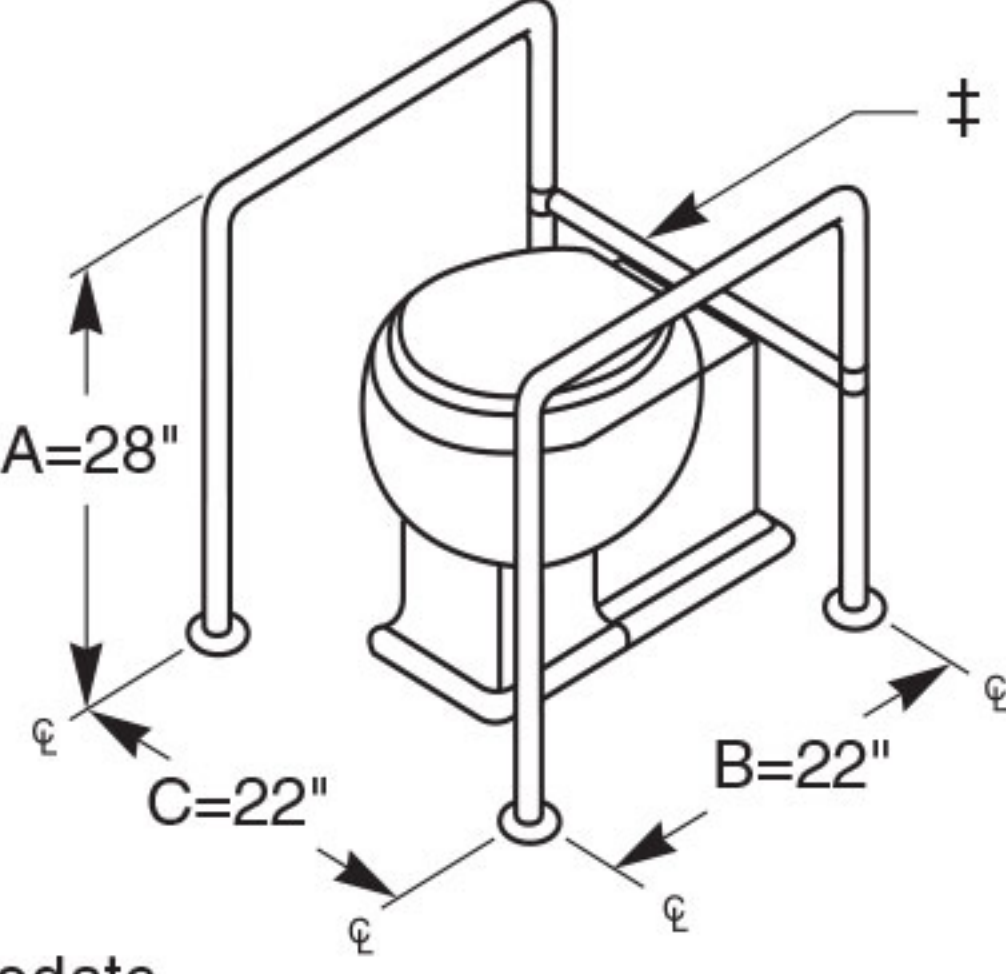


Diagram showing the installation of a sliding grab bar (039) over a toilet. Dimensions: A=28", B=22", C=22".

039-1

Bar adjustable for right- or left-hand mounting.

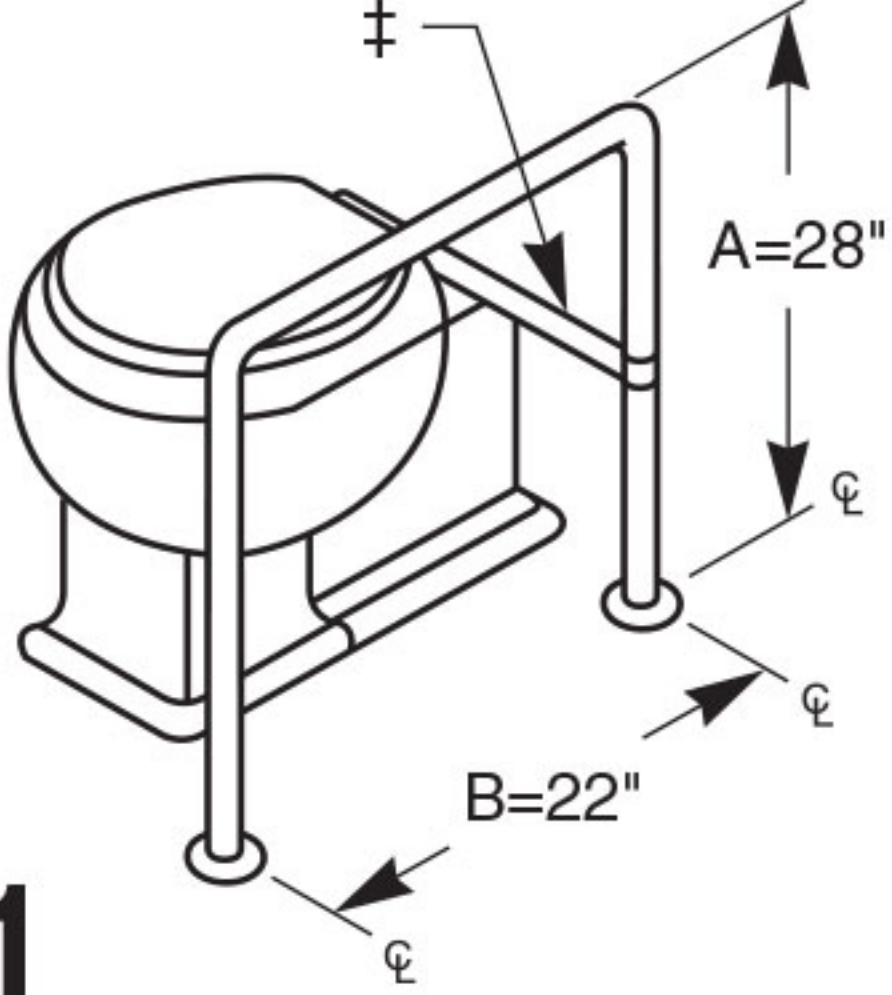


Diagram showing the installation of an adjustable grab bar (039-1) over a toilet. Dimensions: A=28", B=22".

048

(shown) (RH)

049

Opposite hand (LF)

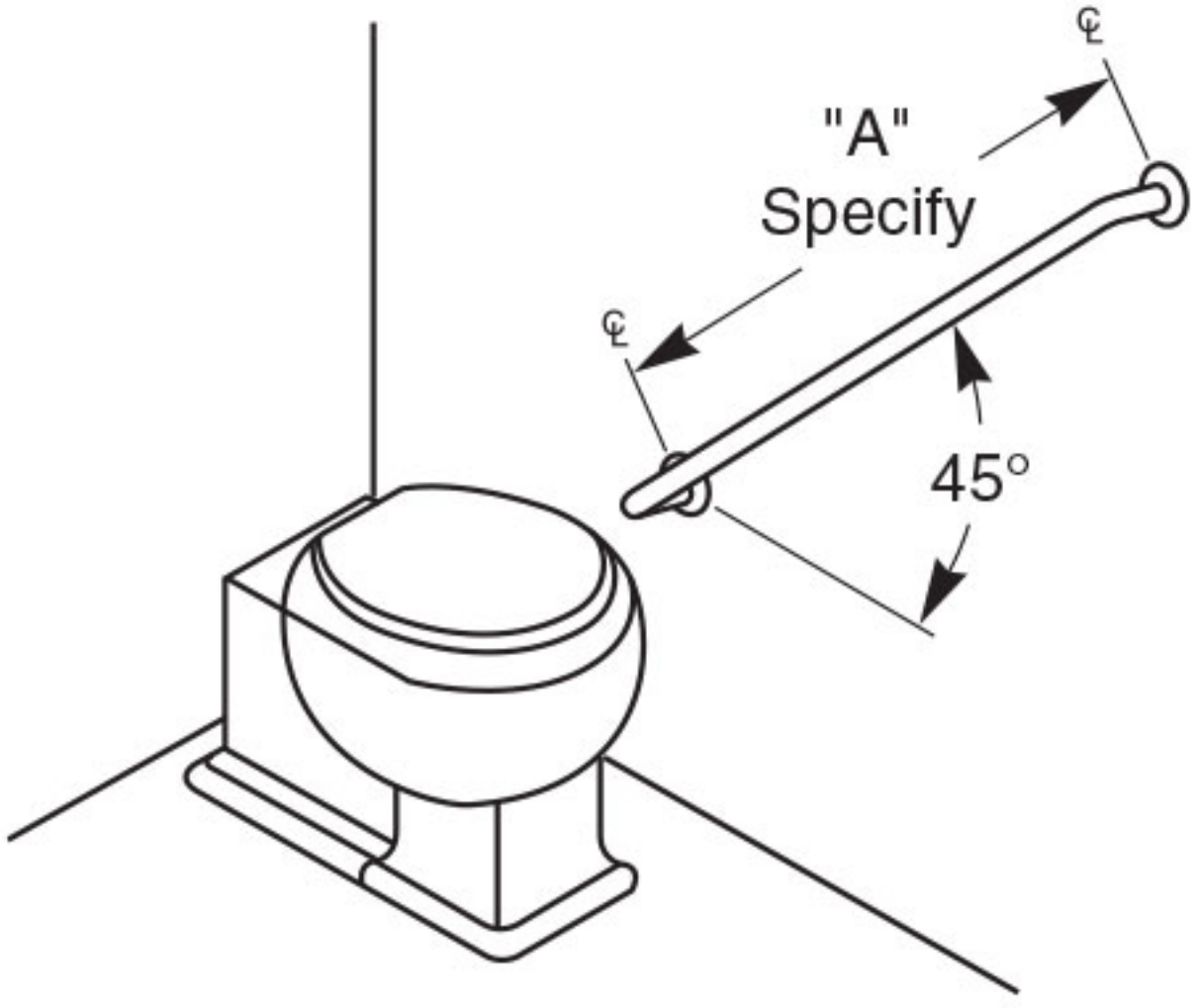



Diagram showing the installation of a grab bar (048 or 049) on the side of a toilet. The bar is mounted at a 45° angle. Dimension: "A" Specify.

- 

ADA Compliant
- Consult local and national accessibility codes for proper installation guidelines.

Conformity and compliance to local and national codes is the responsibility of the installer.

NOTE: When Grab Bar dimensions are modified, a support will be added to all sections longer than 54".