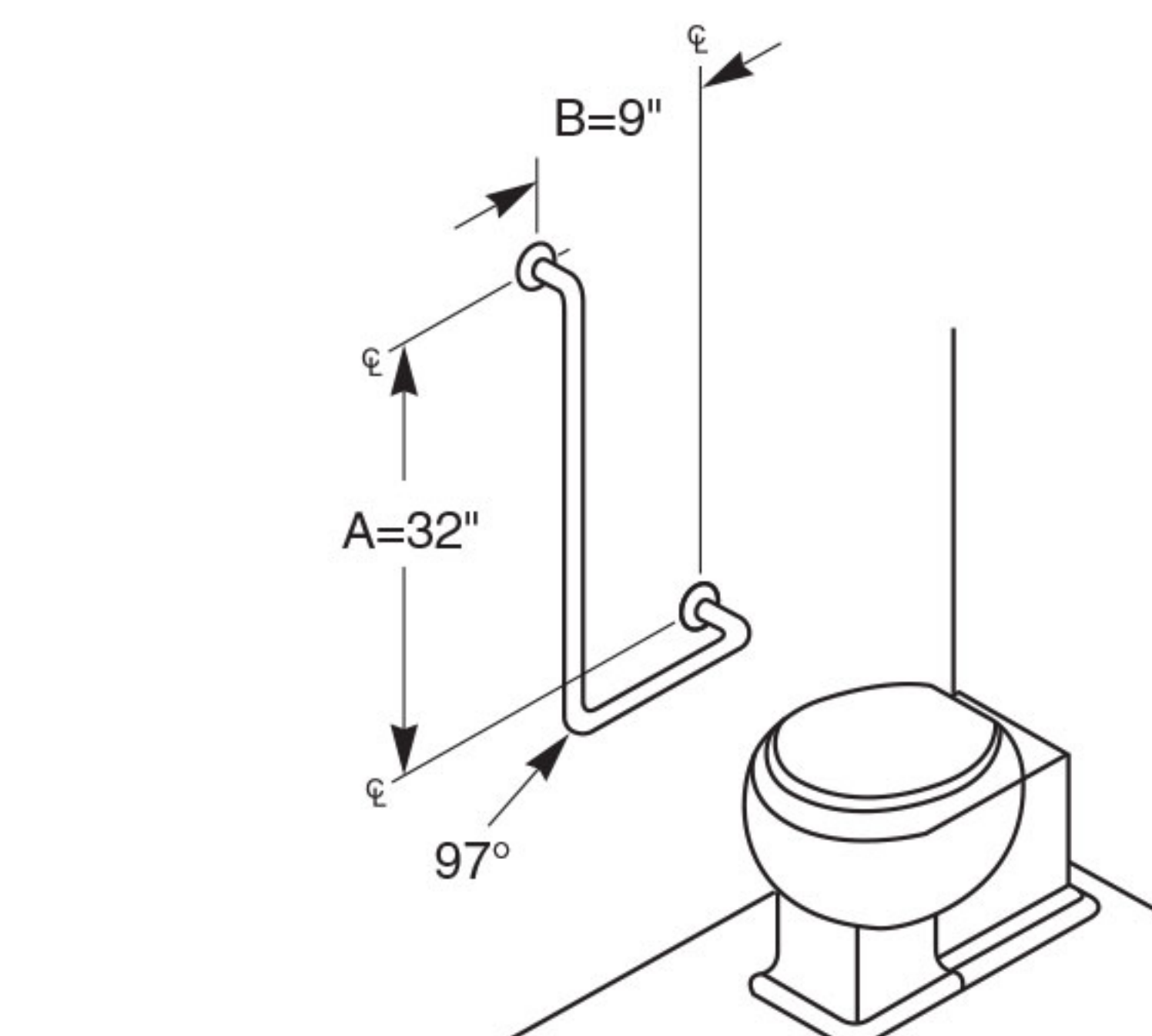
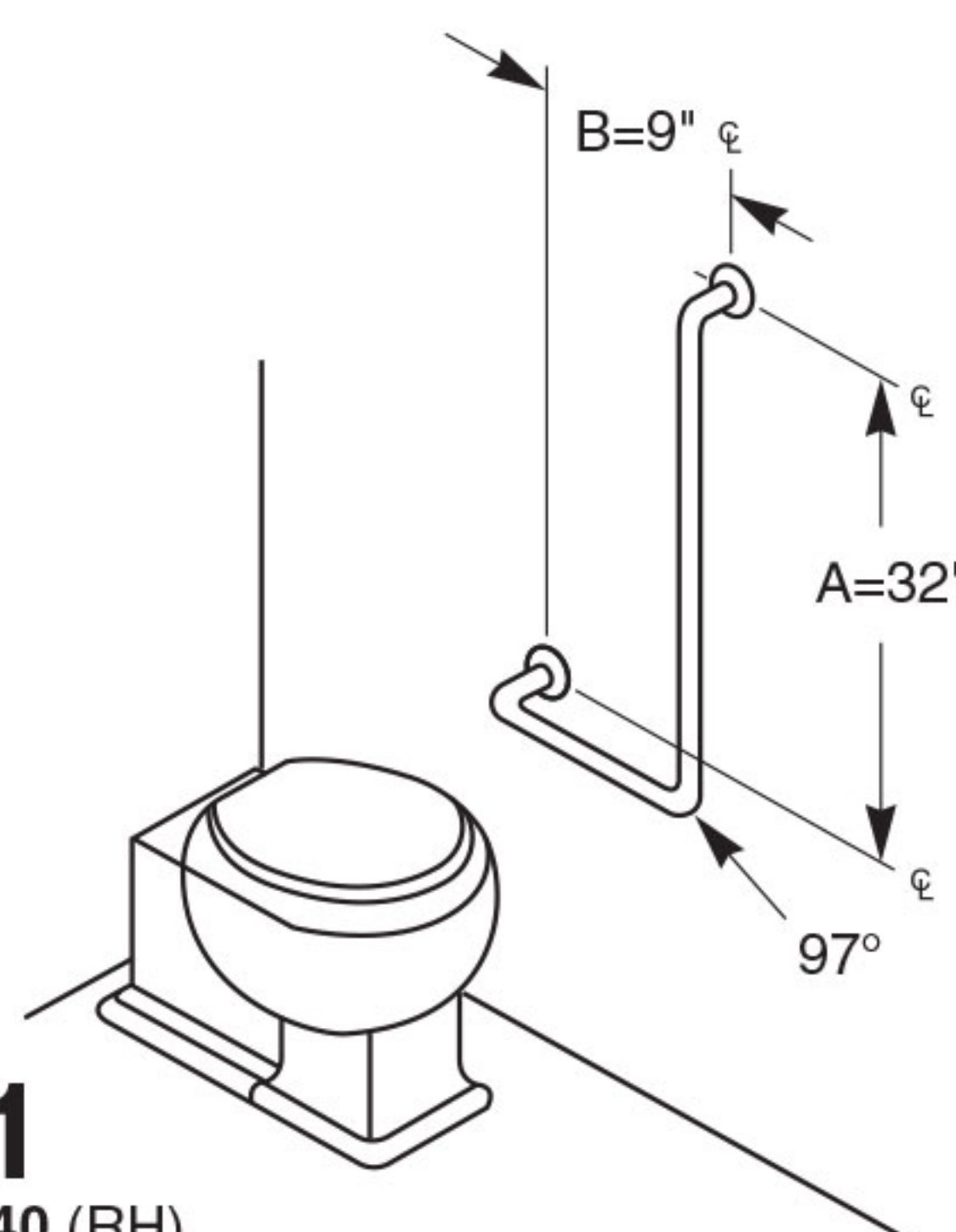


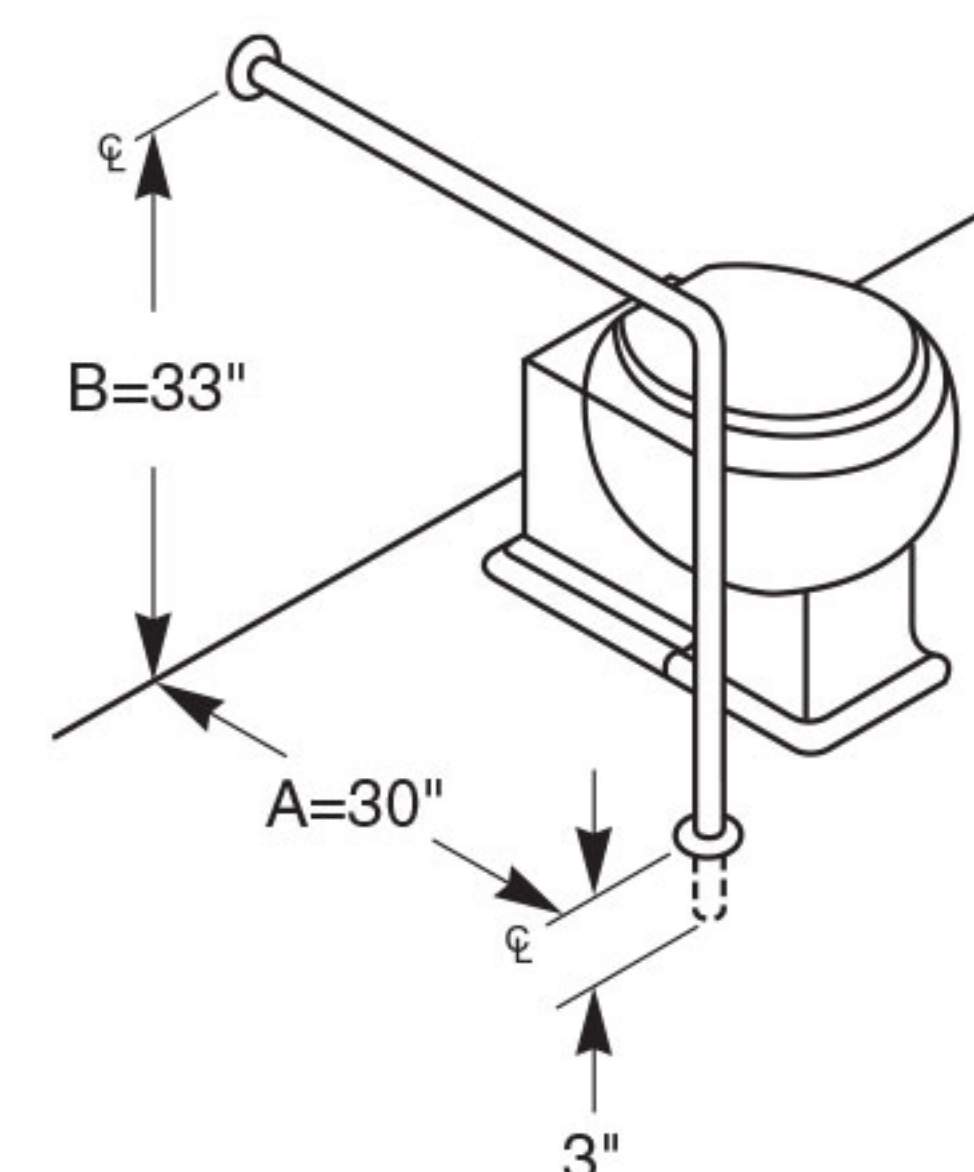
### Typical Water Closet Applications:



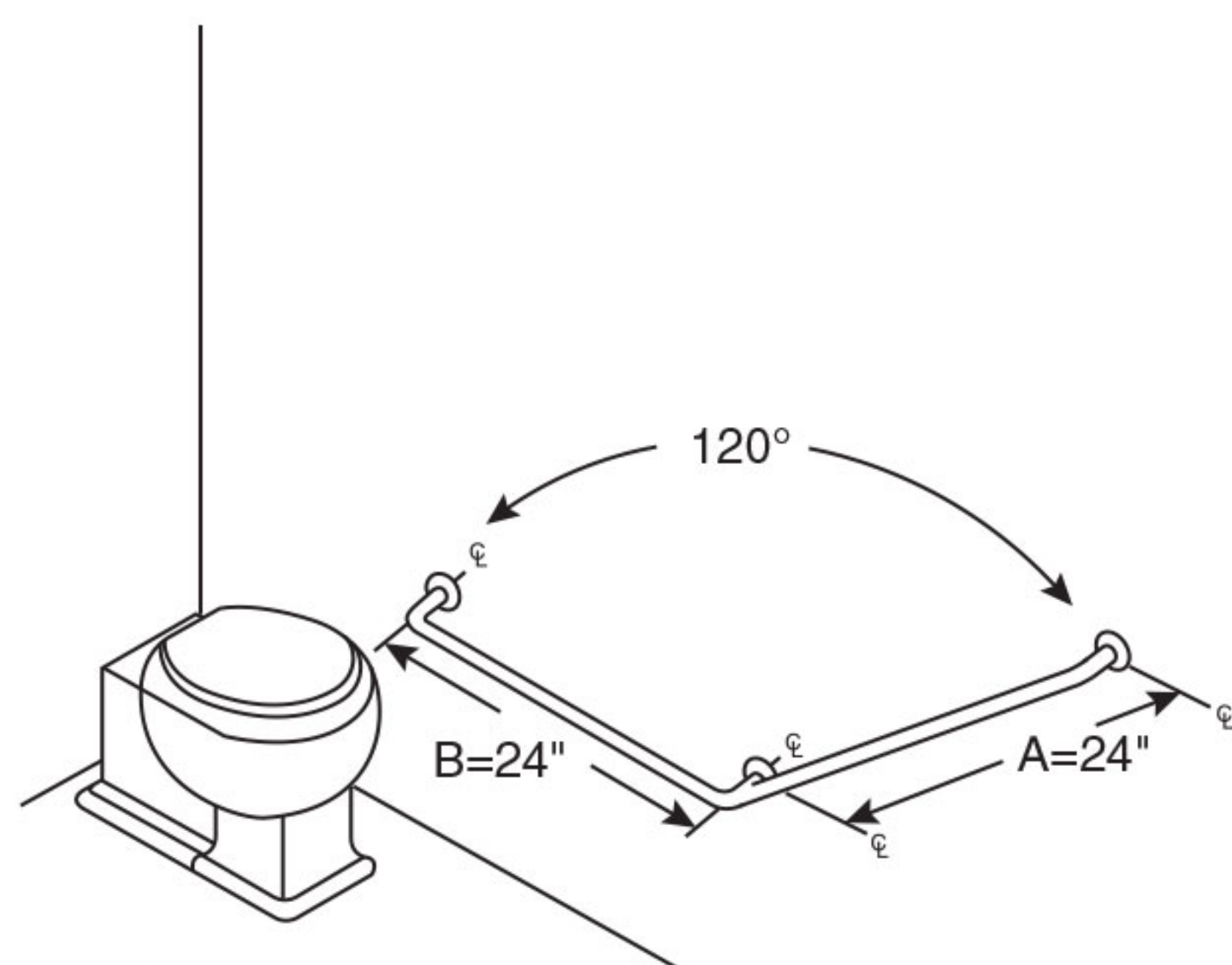
□ **040**  
(LH)



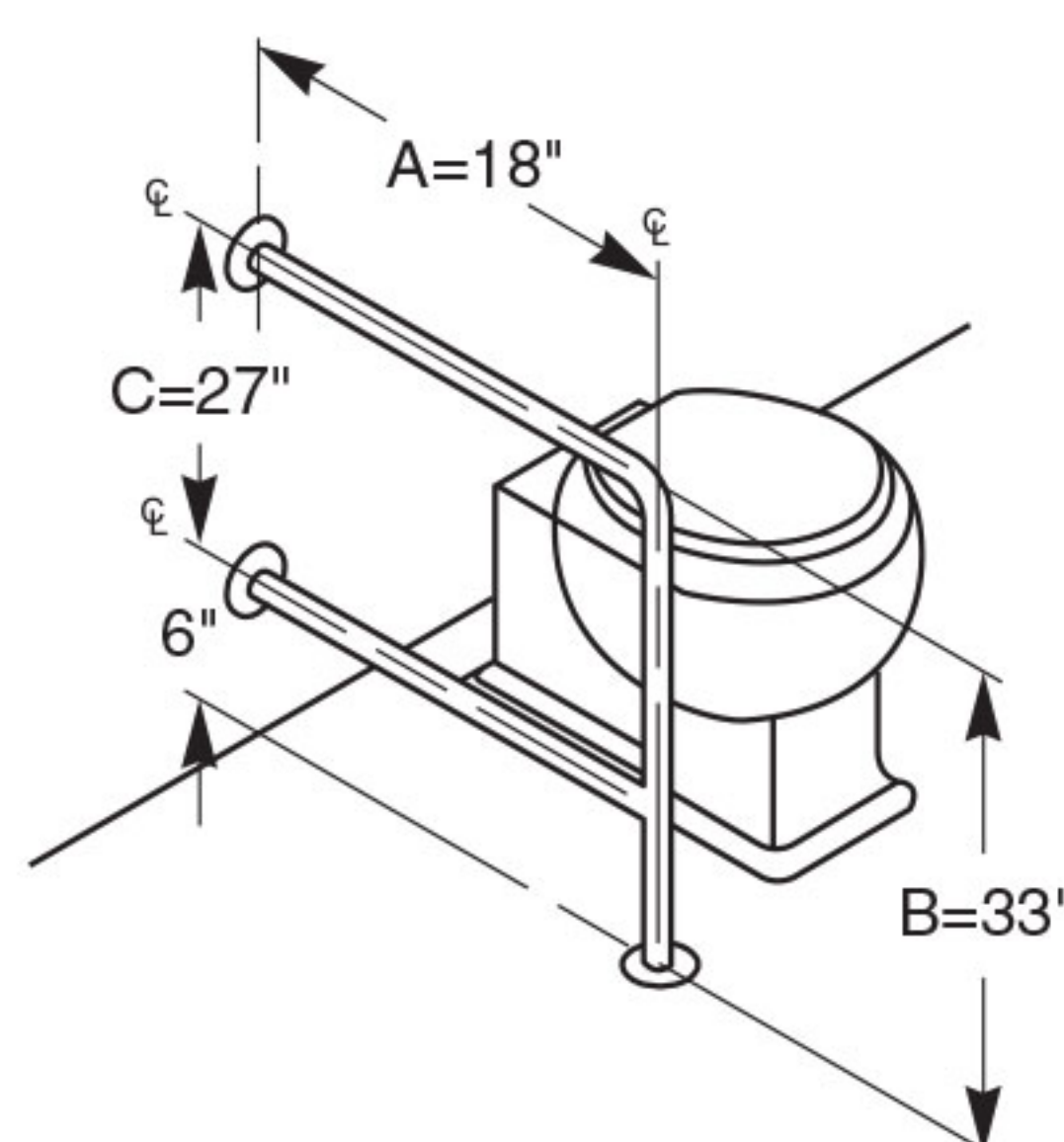
□ **041**  
Opposite **040** (RH)



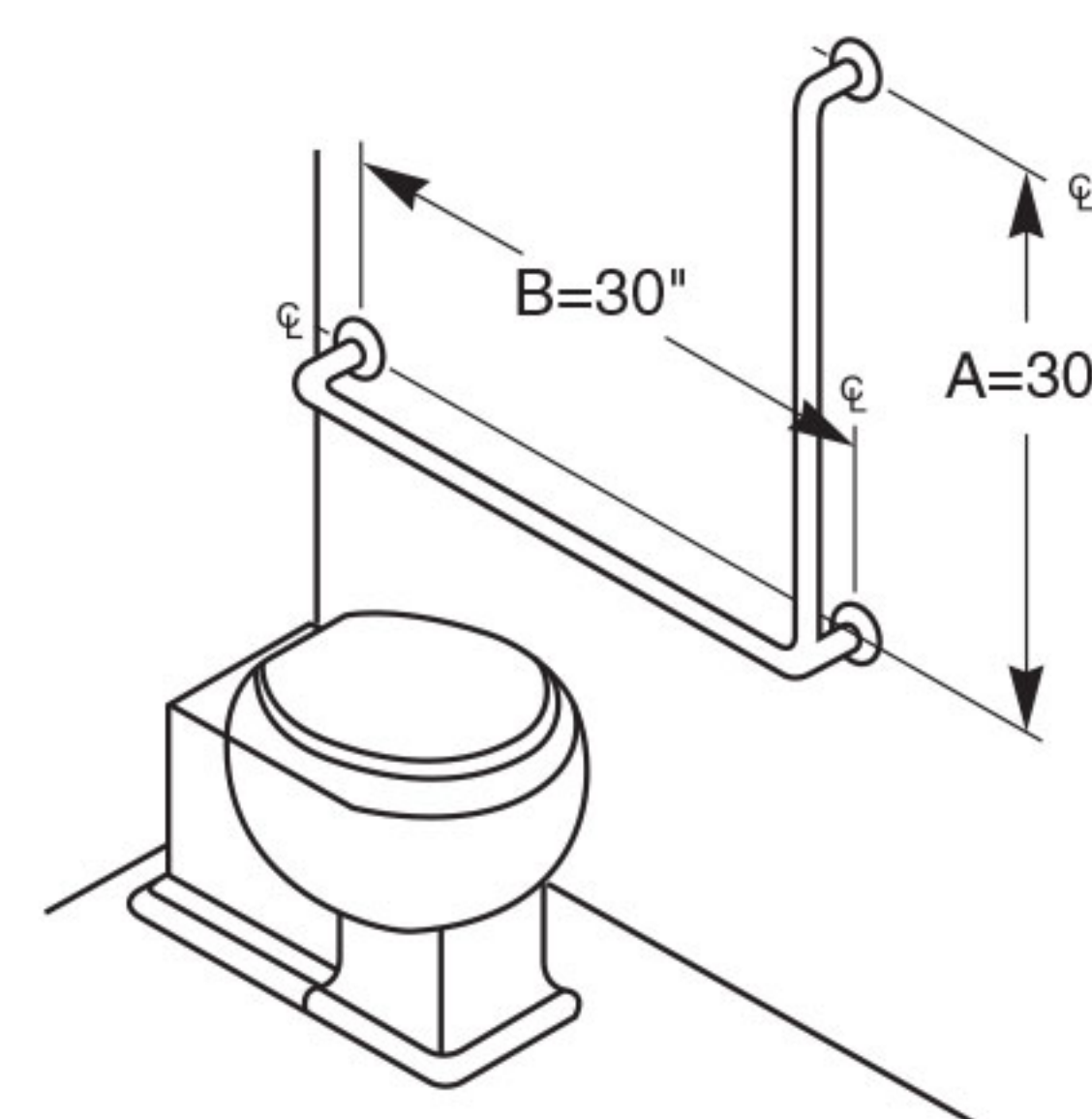
□ **054**  
30" x 33"  
NOTE: 1" not available  
for this application.



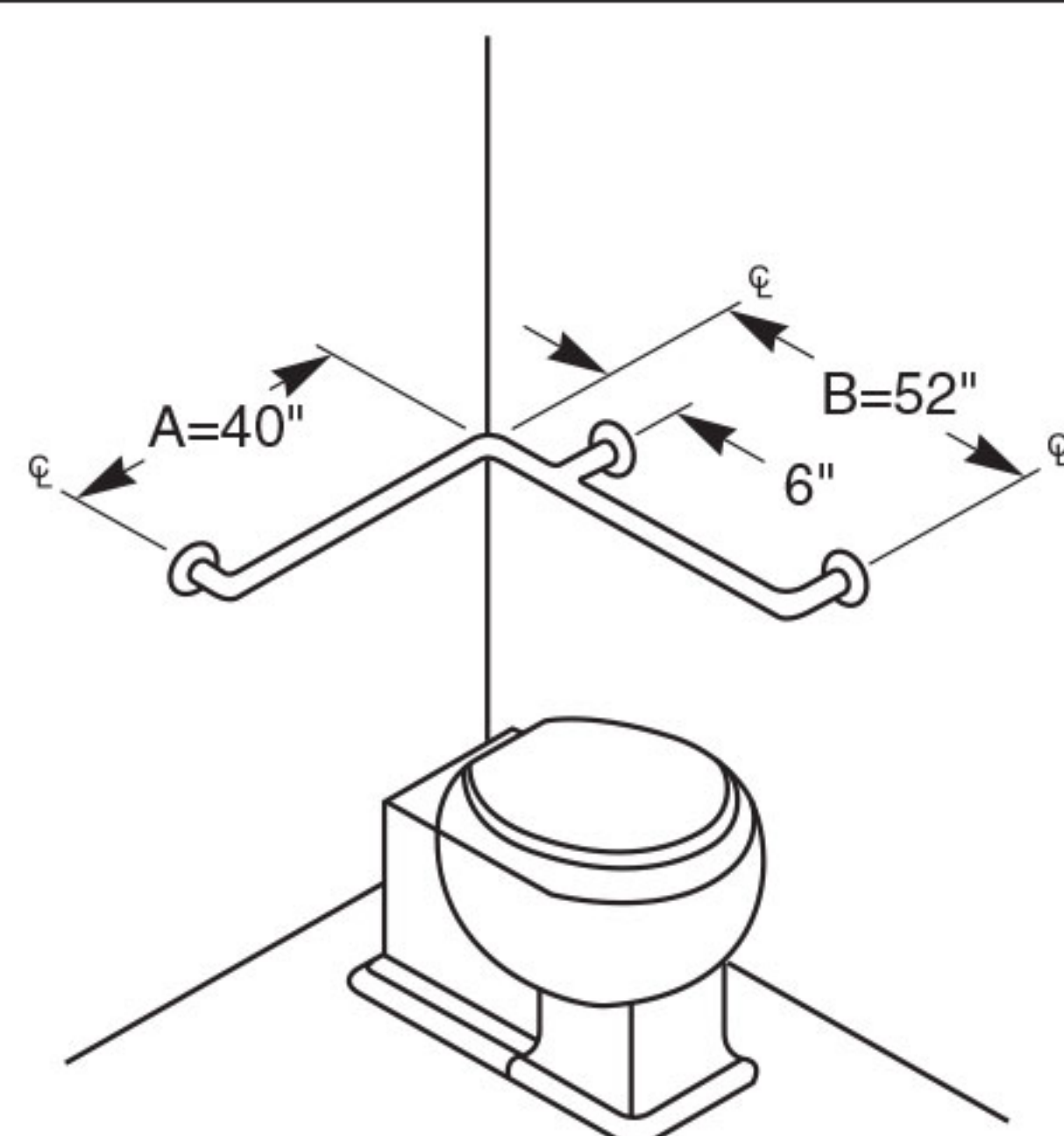
□ **055**  
24" x 24"



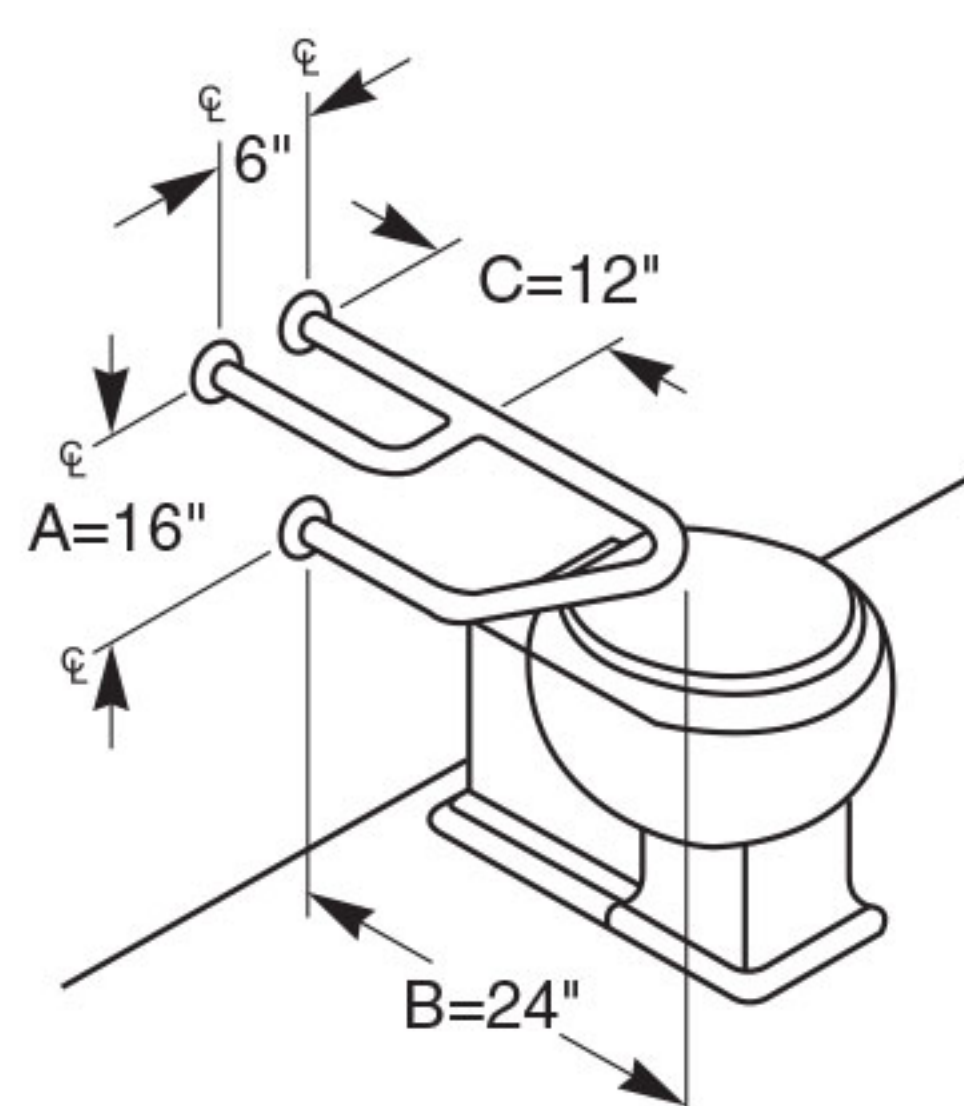
□ **056**  
18" x 33"



□ **057**  
30" x 30"



□ **059**  
"B" side will  
have stand-off.



□ **115**  
(LH)

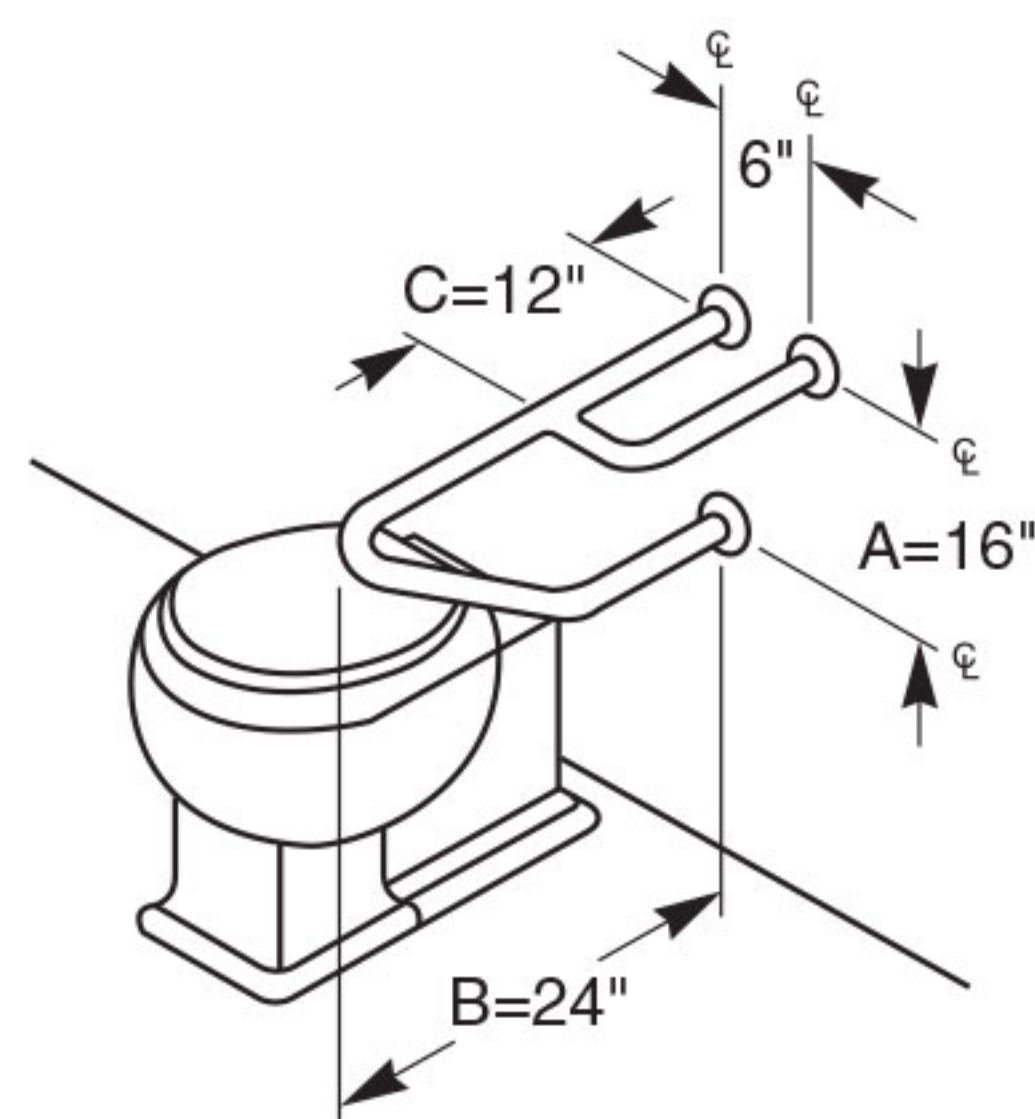
### ADA Compliant

- ☑ Consult local and national accessibility codes for proper installation guidelines.
- ☑ Conformity and compliance to local and national codes is the responsibility of the installer.

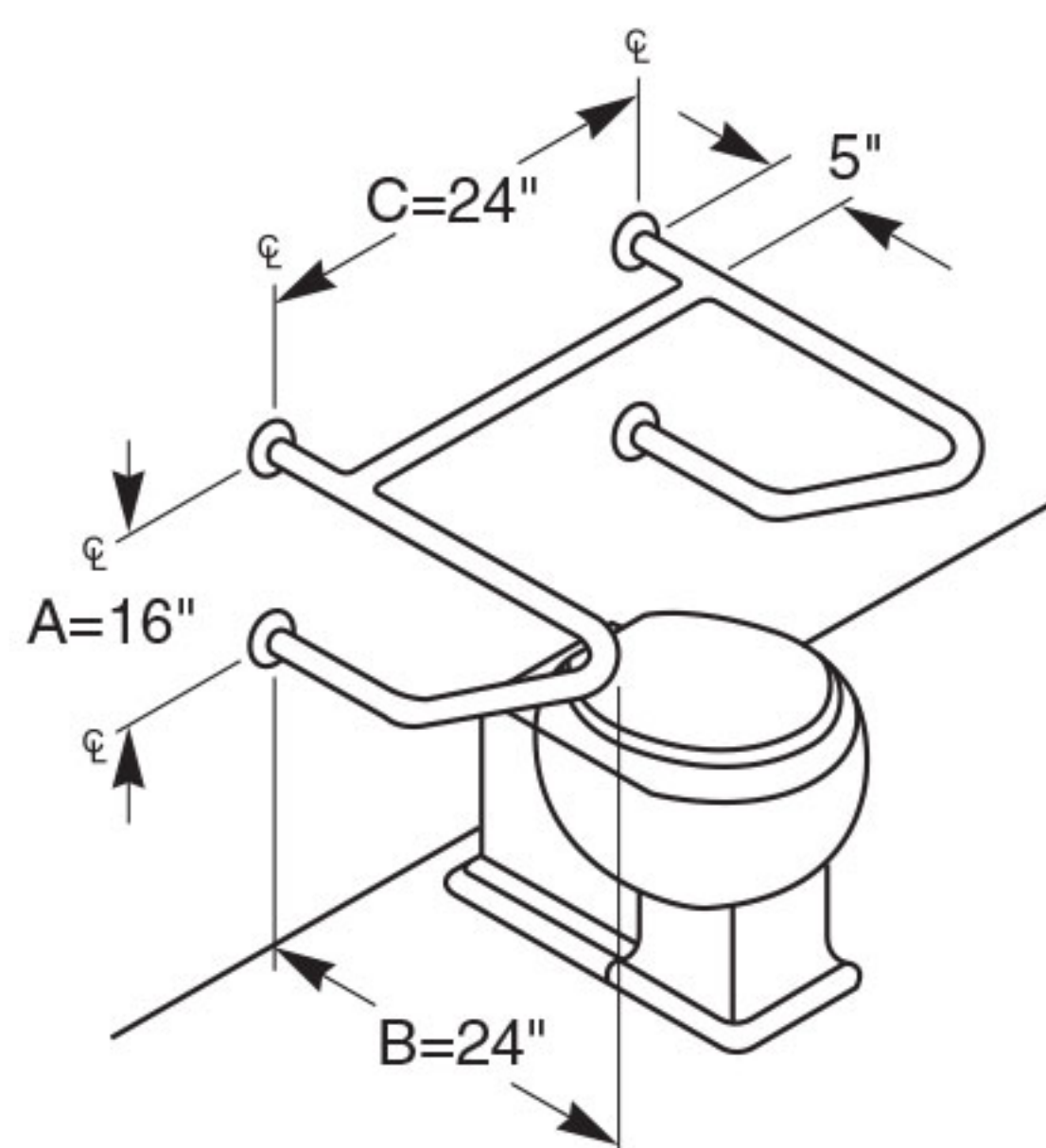
**NOTE:** When Grab Bar dimensions are modified, a support will be added to all sections longer than 54".



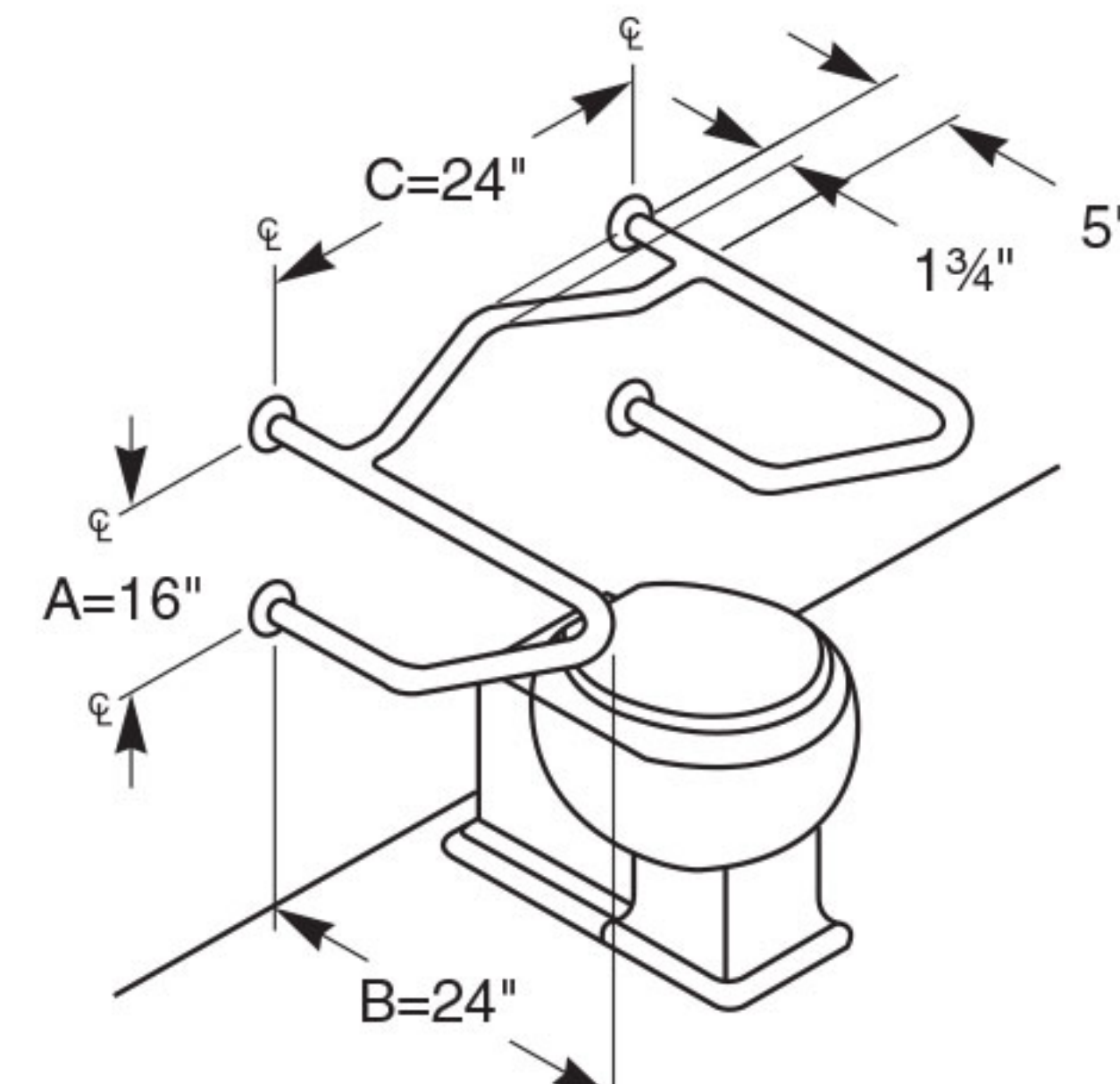
### Typical Water Closet Applications:



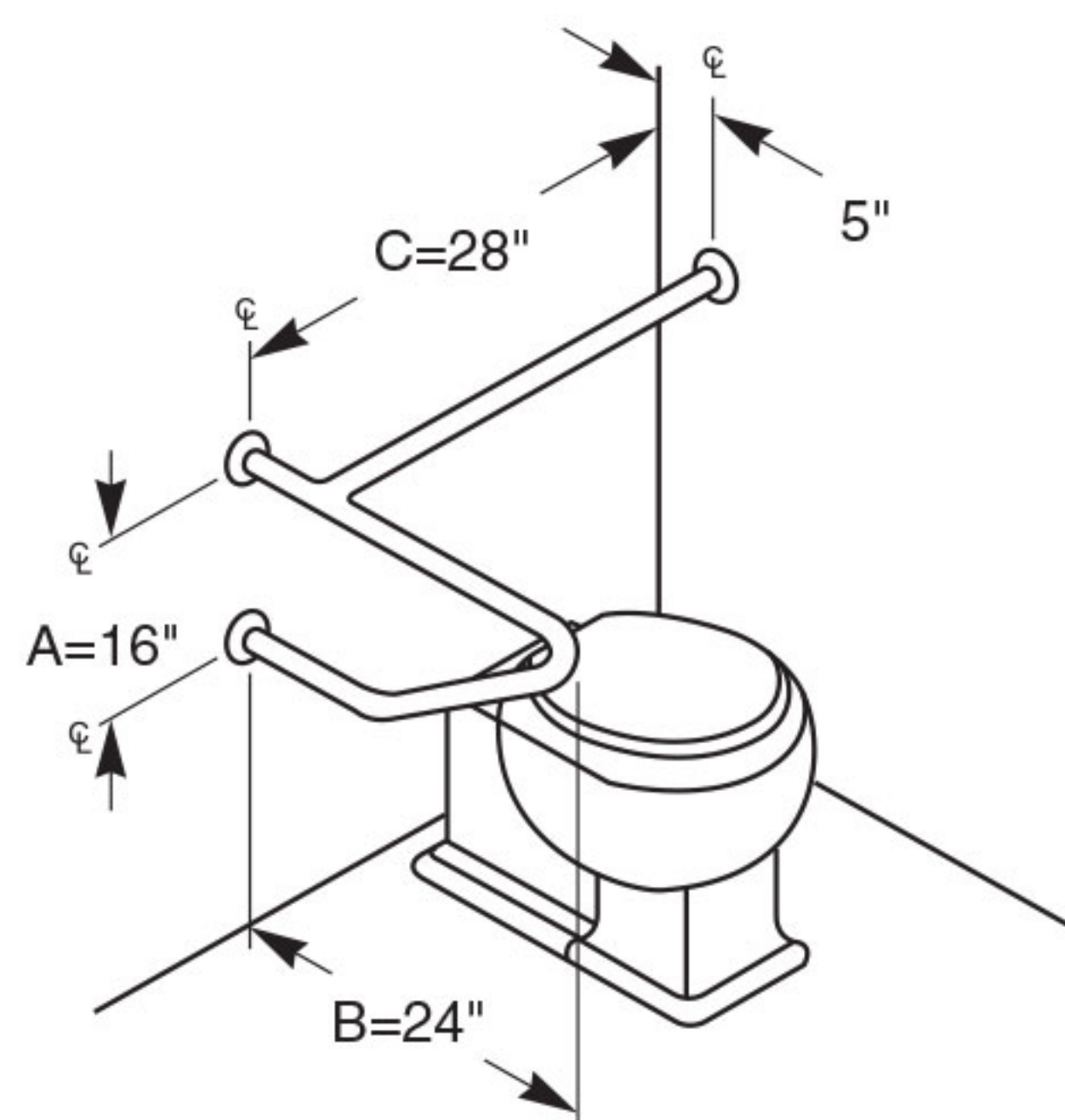
□ **116**  
Opposite 115 (RH)



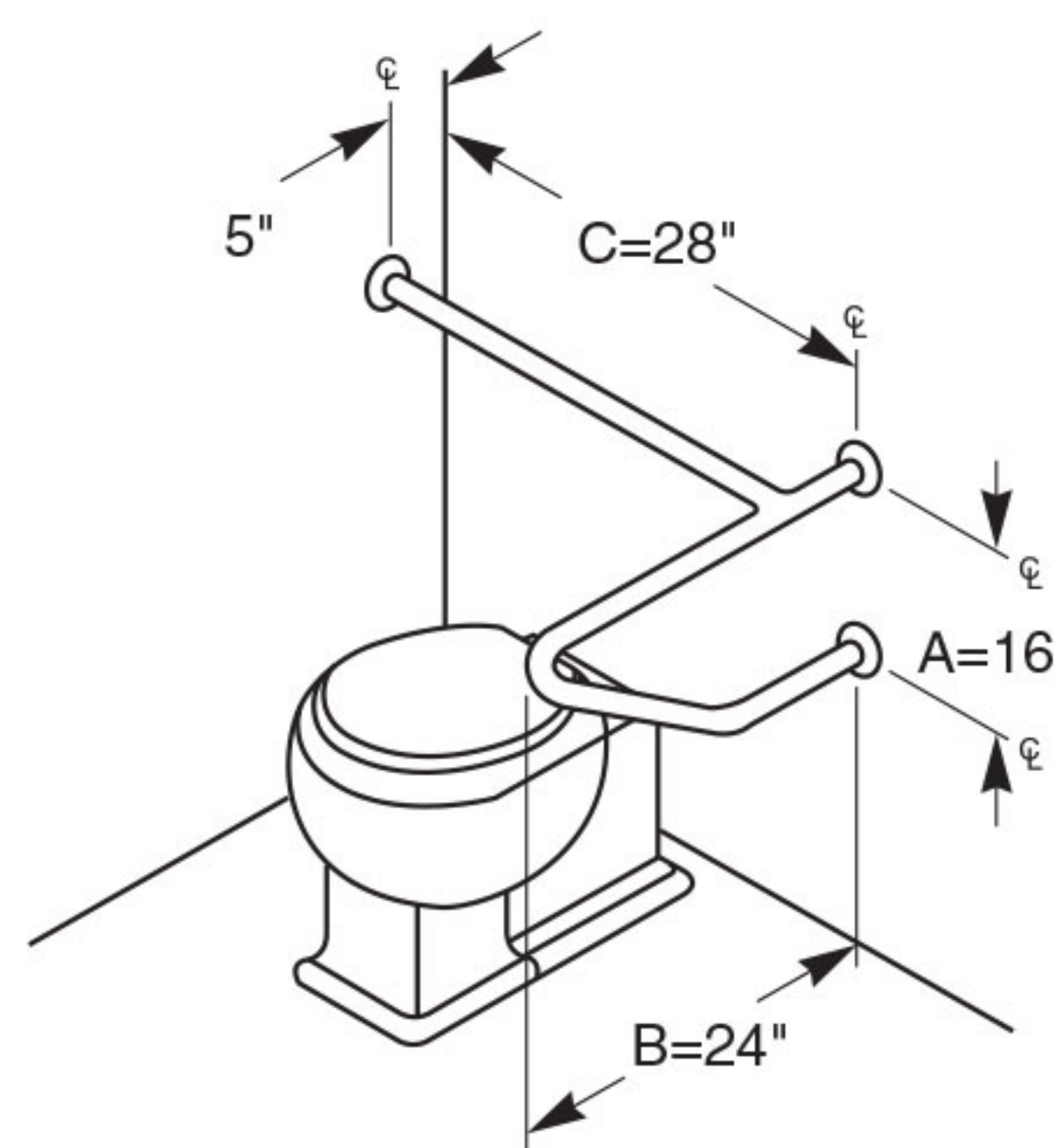
□ **117**  
Confirm clearance between  
fixture or plumbing and grab bar  
in individual applications.



□ **118**  
Confirm clearance between  
fixture or plumbing and grab bar  
in individual applications.



□ **119**  
(shown) (LH)  
Confirm clearance between  
fixture or plumbing and grab bar  
in individual applications.



□ **120**  
Opposite 119 (RH)

### ADA Compliant

- ☑ Consult local and national accessibility codes for proper installation guidelines.
- ☑ Conformity and compliance to local and national codes is the responsibility of the installer.

**NOTE:** When Grab Bar dimensions are modified, a support will be added to all sections longer than 54".