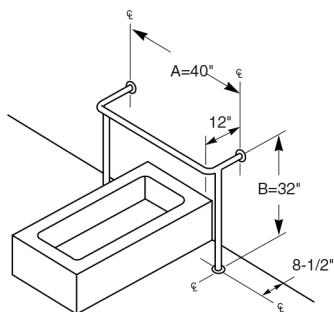
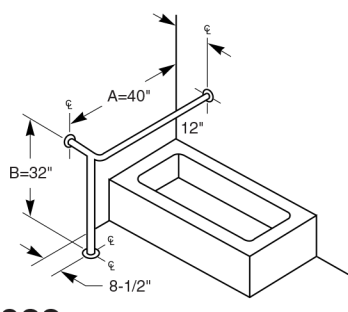


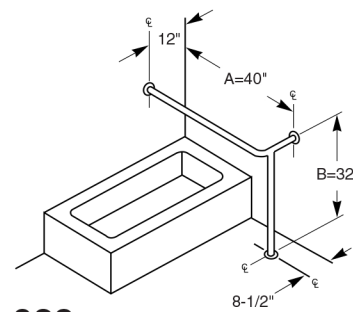
Typical Tub Applications:



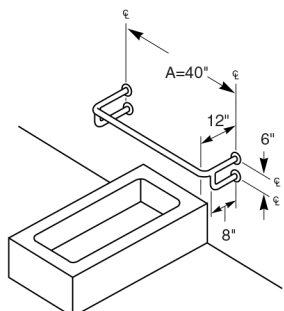
□ **021**



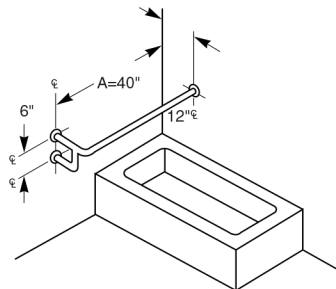
□ **022**
(LH)



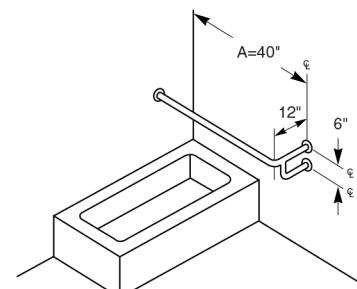
□ **023**
Opposite 022 (RH)



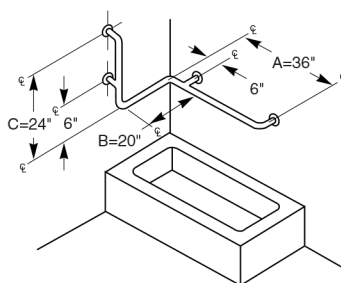
□ **024**



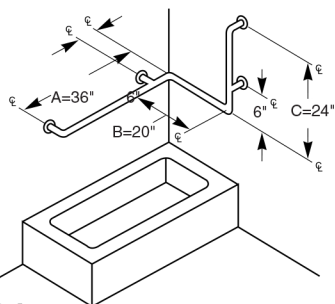
□ **026**
(LH)



□ **027**
Opposite 026 (RH)



□ **030**
(RH)



□ **031**
Opposite 030 (LH)

ADA Compliant

- ☑ Consult local and national accessibility codes for proper installation guidelines.
- ☑ Conformity and compliance to local and national codes is the responsibility of the installer.

NOTE: When Grab Bar dimensions are modified, a support will be added to all sections longer than 54".