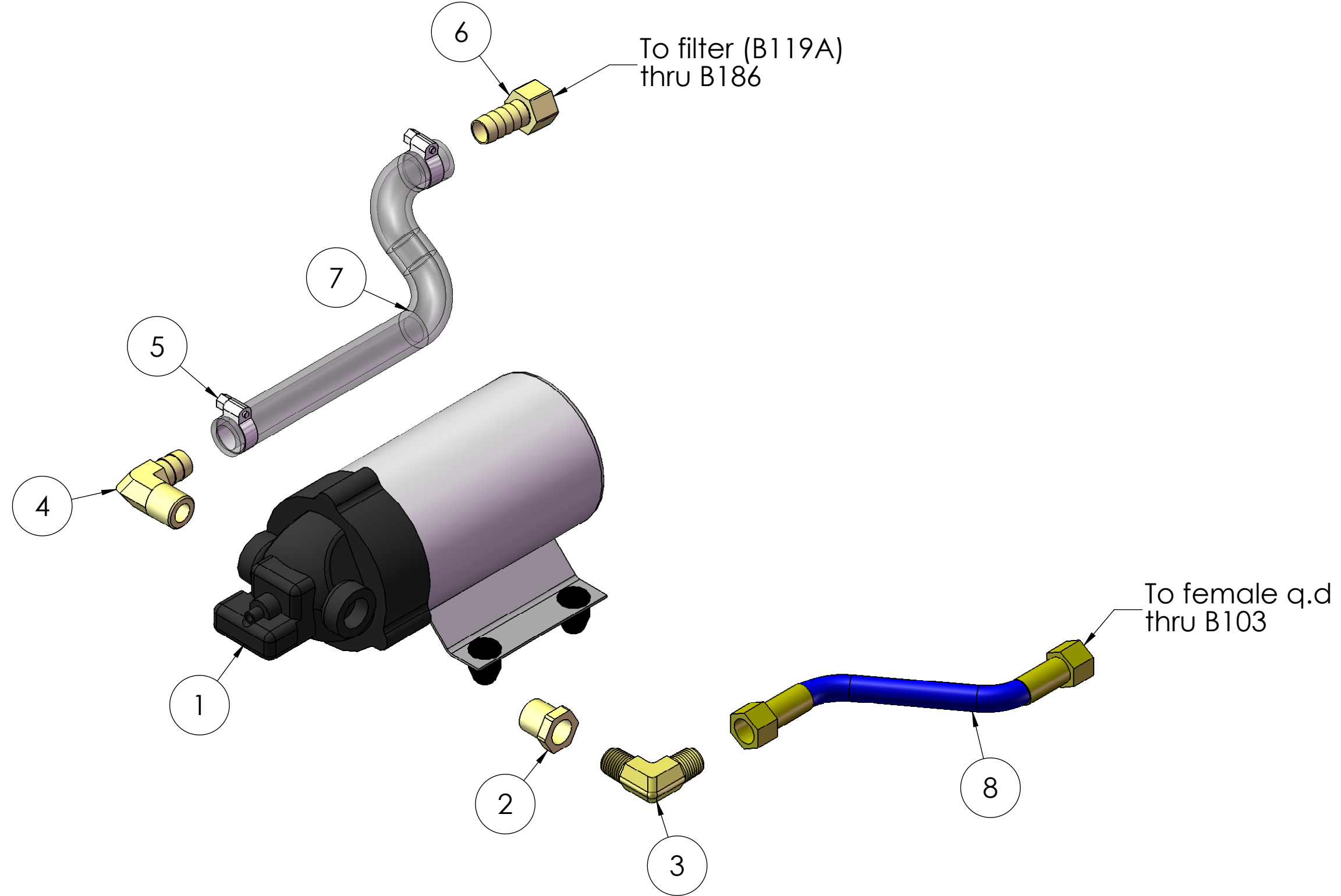


ITEM NO.	PART NO.	DESCRIPTION	QTY.
1	C305	pump, 100psi, demand, 115V	1
2	B105	bushing, brass, 3/8"mpt x 1/4"	1
3	B136	elbow, brass, 90 deg, 1/4" mpt x 1/4" mpt	1
4	B172	elbow, brass, 90 deg, 1/2" barb x 3/8"mpt	1
5	H347	clamp, hose, 5/16-29/32	2
6	B160	adapter, brass, 1/2" barb x 3/8" fsw, ball end	1
7	PH615-25	sol hose, 1/2" kuri 100psi	1
8	AH108S	sol hose, 1/4" x 24 1/2", (OAL), f x fsw, 3000psi	1



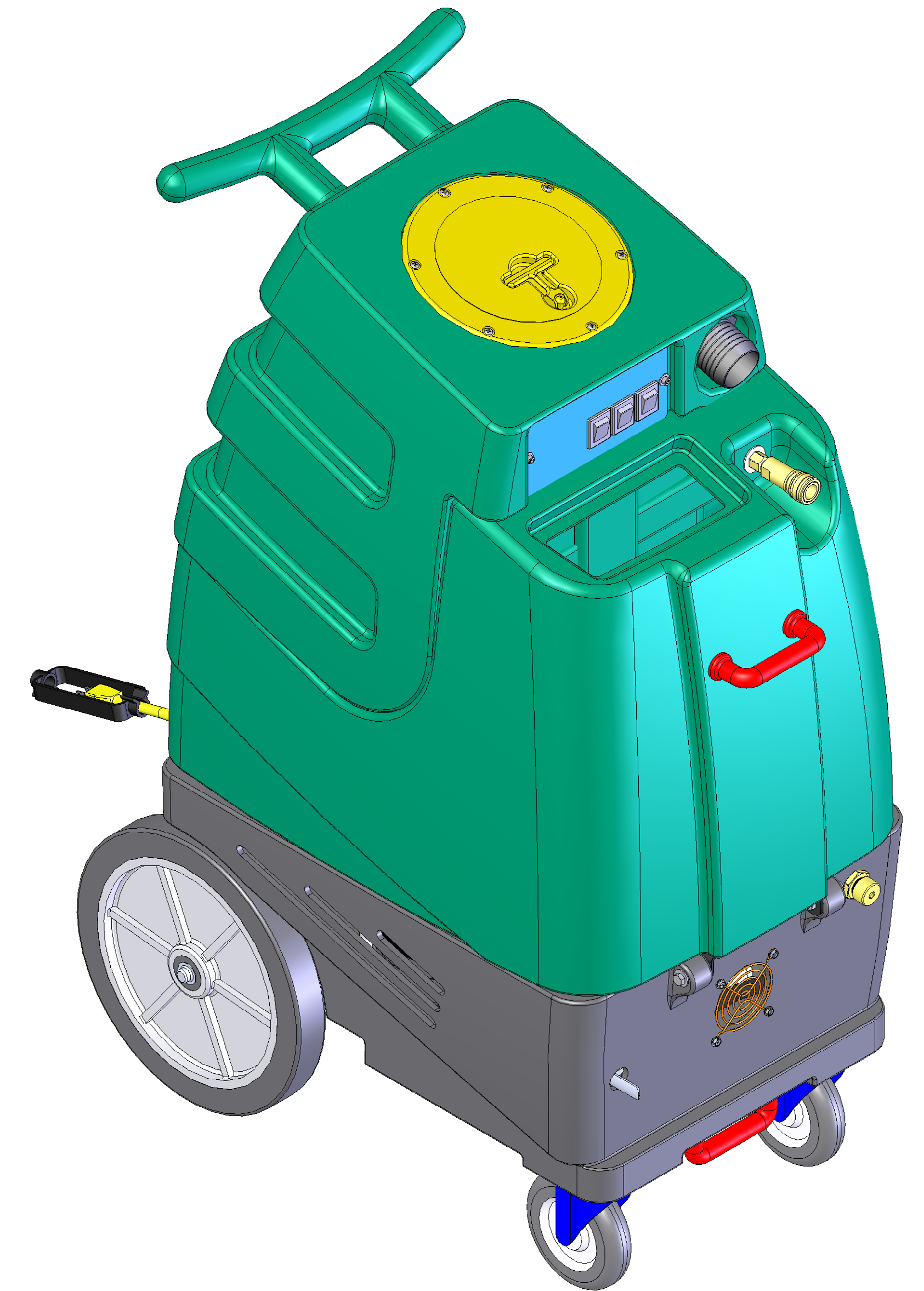
	NAME	DATE	MYTEE PRODUCTS, INC.	
DRAWN	V. LaBarbera		858-679-1191	
CHECKED			TITLE:	
PROPRIETARY AND CONFIDENTIAL			SIZE	DWG. NO.
THE INFORMATION CONTAINED IN THIS DRAWING IS THE SOLE PROPERTY OF MYTEE PRODUCTS, INC. ANY REPRODUCTION IN PART OR AS A WHOLE WITHOUT THE WRITTEN PERMISSION OF MYTEE PRODUCTS, INC. IS PROHIBITED.			C	100 psi
			SCALE: 1:2	DO NOT SCALE DRAWING
			SHEET 1 OF 1	

ITEM NO.	PART NO.	DESCRIPTION	QTY.
1	H219	cap, axle, 1/2"	2
2	H251	wheel, 12"	2
3	H254	washer, axle, cut 1/2" id	4
4	H371	axle, 1/2" x 18-1/2", sp, breeze	1
5	H221	nut, lock, 1/2" steel	1
6	H220	fitting, strain relief, cord	1
7	E550	power cord, pigtail, 30', 12/3, yel	1
8	G131	connector, cord lock	1
9	H229	fitting, inlet, pvc, 1-1/2", gray	2
10	G001	gasket, inlet, 1.80" i.d.	2
11	P731	base, speedster	1
12	B235	adapter, brass, 3/8" barb x 1/4" fsw	2
13	PH715-19	sol hose, kuriyama, 3/8"	1
14	C322A	regulator, 200 psi	1
15	H296	guard, cooling fan, wire	2
16	H343	screw, #10 x 5/8" hex head, zinc	8
17	H485	handle, breeze	2
18	H211	washer, 1/4" id x 1" od, flat, s/s	8
19	H770	bolt, 1/4-20 x 1/2" serrated hex flange, zinc	8
20	H216	nut, lock, 1/4-20, nylon insert, s/s	13
21	H210	washer, 1/4" flat, s/s	19
22	H342	bolt, 1/4-20 x 1" hex head, s/s	8
23	H666	caster, 5"	2
24	H601	plate, manifold, parallel	1
25	P750	manifold, dual vac, parallel	1
26	G004	gasket, vacuum motor	2
27	H768	bolt, 1/4-20 x 3/4" serrated hex flange, zinc	11
28	H244	adapter, pvc, 1-1/2" fms x fmpt	2
29	PH633-03	pipe, pvc, 1-1/2"	2
30	PH628-6	vac hose, 2", wire reinforced	1
31	C310	vac motor, 2 stage HP, 115V, tangential	2
32	PH628-24	vac hose, 2", wire reinforced	1
33	H544	cuff, 2"	1
34	H217	clamp, hose, 2-1/4 DIA	5
35	H500	vac support, 2 stage, 3-1/8"	6
36	H201	bolt, 1/4-20 x 1/2" hex head, zinc	8
37	B160	adapter, brass, 1/2" barb x 3/8" fsw, ball end	1
38	H347	clamp, hose, 5/16-29/32	8
39	PH615-18	sol hose, 1/2" kuri 100psi	1
40	B175	filter, cup, in-line	1
41	PH615-6	sol hose, 1/2" kuri 100psi	1
42	AH103	hose, 3/8" x 10", (OAL), f x fsw, surge, 1600psi	1
43	B107	nipple, brass, 1/4"m, hex	2
44	B113	tee, brass, 1/4" fpt	1
45	B136	elbow, brass, 90 deg, 1/4" mpt x 1/4" mpt	2
46	B644	adapter, brass, 1/2" barb x 1/4" mpt	1
47	B103	elbow, brass, 90 deg, 1/4"mpt x 1/4" fpt	4
48	H902	valve, prime, high pressure	1
49	B241	adapter, brass, 3/8" barb x 1/4"mpt	1
50	PH715-26	sol hose, kuriyama, 3/8"	1
51	AH108S	sol hose, 1/4" x 24 1/2", (OAL), f x fsw, 3000psi	1
52	H222	screw, #10-32 x 1-1/4" phil pan head, zinc	4
53	H273	nut, kep, #10-32 zinc	4
54	C322	pump, 200psi, bypass, 115V	1
55	B127	plug, brass, 1/4"mpt, hex	1
56	H922	knob, thumb screw, for bracket	2
57	H307	1/4 ext tooth l/w steel zinc	2

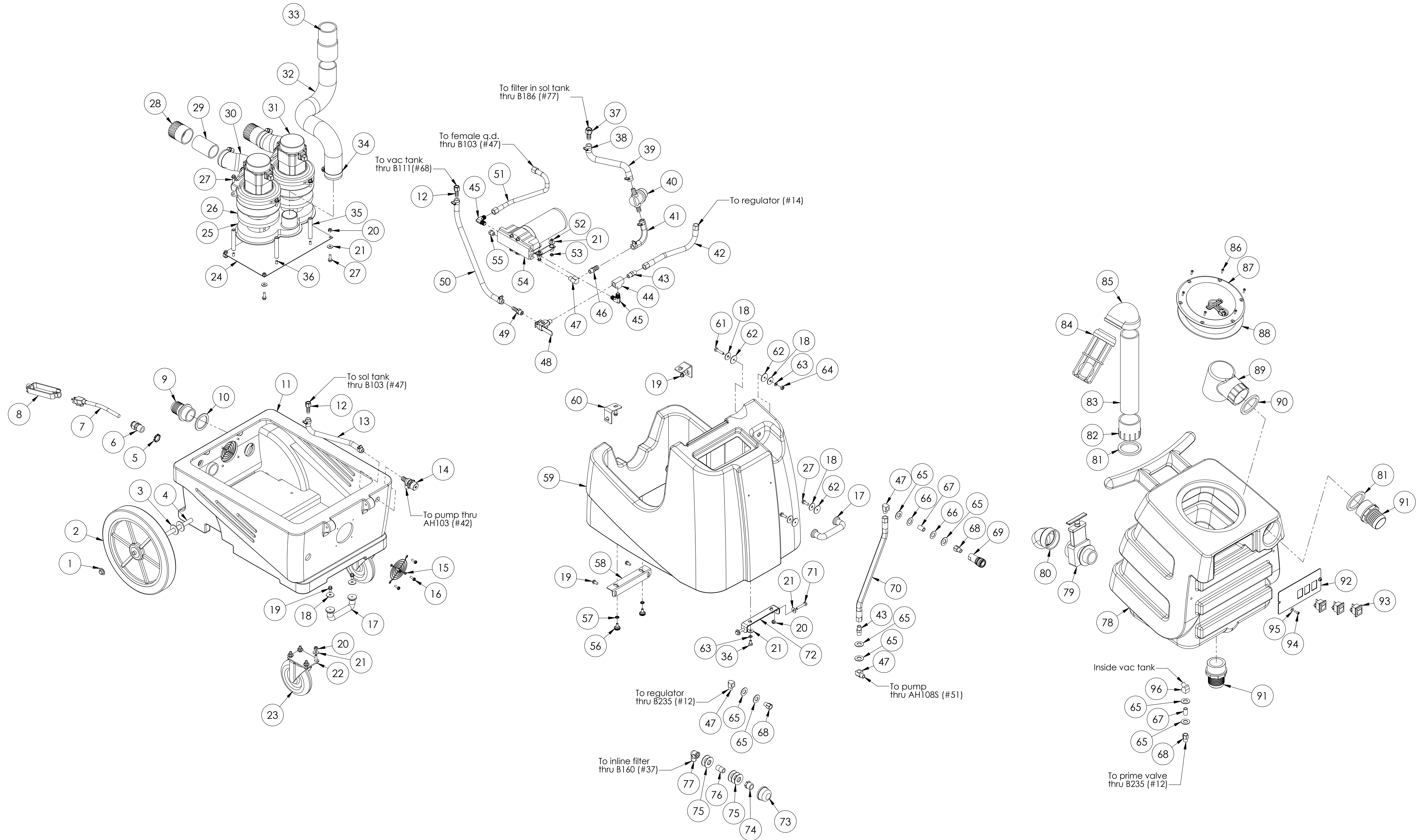
ITEM NO.	PART NO.	DESCRIPTION	QTY.
58	H912	bracket, rear, fb/spy	1
59	P732	sol tank, speedster	1
60	H390A	bracket, "L" (all extractors)	2
61	H203	bolt, 1/4-20 x 1-1/4" hex head	2
62	G052	washer, buna 1-1/8" od x 3/16" id	6
63	H213	washer, 1/4" lock, s/s	4
64	H215	nut, hex, 1/4-20 s/s	2
65	H212	washer, 9/16" id x 1" od, flat, s/s	8
66	H413	washer, nylon, 9/16 id x 1-1/16 od x .031	2
67	B106	nipple, brass, 1/4" x close	2
68	B111	adapter, brass, extender, 1/4" mpt x 1/4" fpt, hex	3
69	B102	qd, brass, 1/4" f	1
70	AH105	hose, 3/8" x 17-1/2", (OAL), f x -fsw, surge, 1600psi	1
71	H316	bolt, 1/4-20 x 1-1/2" hex head, s/s	2
72	H378	bracket, front hinge, sp/fb	1
73	B119A	filter, strainer, 1/2"	1
74	B210	bushing, brass, 1/2"mpt x 3/8" fpt, hex	1
75	H299	washer, 11/16" id x 1-1/2" od x .075, s/s	5
76	B216	nipple, brass, 3/8" x close	1
77	B186	elbow, brass, 90 deg, 3/8"mpt x 3/8" fmpt	1
78	P733	vac tank, speedster	1
79	H225	valve, drain, 1-1/2"	1
80	H226	spout, drain, 45 degree	1
81	G002	gasket, 2" inlet polyethylene, 3" OD 2.35" ID	2
82	P684	adaptor, pvc 2, fmsl x fmsl	1
83	P682	pipe, pvc, 2"	1
84	H490	float, 2", ball style	1
85	P726	elbow, 2" float	1
86	H304	screw, #8 x 5/8 phil oval, s/s	6
87	G090	lid, vac tank, black, 7"	1
88	G091	gasket, 7", vac lid	1
89	A926	elbow, inlet assembly 2"	1
90	G083	gasket, 2" inlet	1
91	P685	inlet, 2"	2
92	H338	plate, switch, sp, 3 hole	1
93	E515	switch, rocker, 2 position	3
94	H389	screw, #10-32 x 1/2" SHCS, alloy	2
95	H612	washer, #8 flat, s/s	2
96	B130	elbow, brass, 45 deg, 1/4" mpt x 1/4" fpt	1

ITEMS NOT SHOWN:

PART NO.	DESCRIPTION	QTY.
E530	power cord, ext, 50', 12/3 yel	1
G010	filter, bag, vac tank	1
G085	gasket, strip, 3/4" x 36" X 1/8"	2



NAME	DATE	MYTEE PRODUCTS, INC. 888-679-1191
V. LaBarbera	4/2004	
DRAWN		TITLE:
CHECKED		SPEEDSTER, 1000DX
<small>PROPRIETARY AND CONFIDENTIAL THE INFORMATION CONTAINED IN THIS DRAWING IS THE SOLE PROPERTY OF MYTEE PRODUCTS, INC. ANY REPRODUCTION IN PART OR AS A WHOLE WITHOUT THE WRITTEN PERMISSION OF MYTEE PRODUCTS, INC. IS PROHIBITED.</small>		
SIZE	DWG. NO.	REV
D	1000DX-200	A
SCALE: 1:4	DO NOT SCALE DRAWING	SHEET 1 OF 2



NAME	DATE	MYTEE PRODUCTS, INC. 850-679-1191
V. LaBarbera	4/2004	
TITLE:		SPEEDSTER, 1000DX
DRAWN		
CHECKED		SIZE DWG. NO.
PROPRIETARY AND CONFIDENTIAL		D 1000DX-200
THE INFORMATION CONTAINED IN THIS DRAWING IS THE SOLE PROPERTY OF MYTEE PRODUCTS, INC. ANY REPRODUCTION IN PART OR AS A WHOLE WITHOUT THE WRITTEN PERMISSION OF MYTEE PRODUCTS, INC. IS PROHIBITED.		REV
		A
SCALE: 1:6		DO NOT SCALE DRAWING
		SHEET 2 OF 2